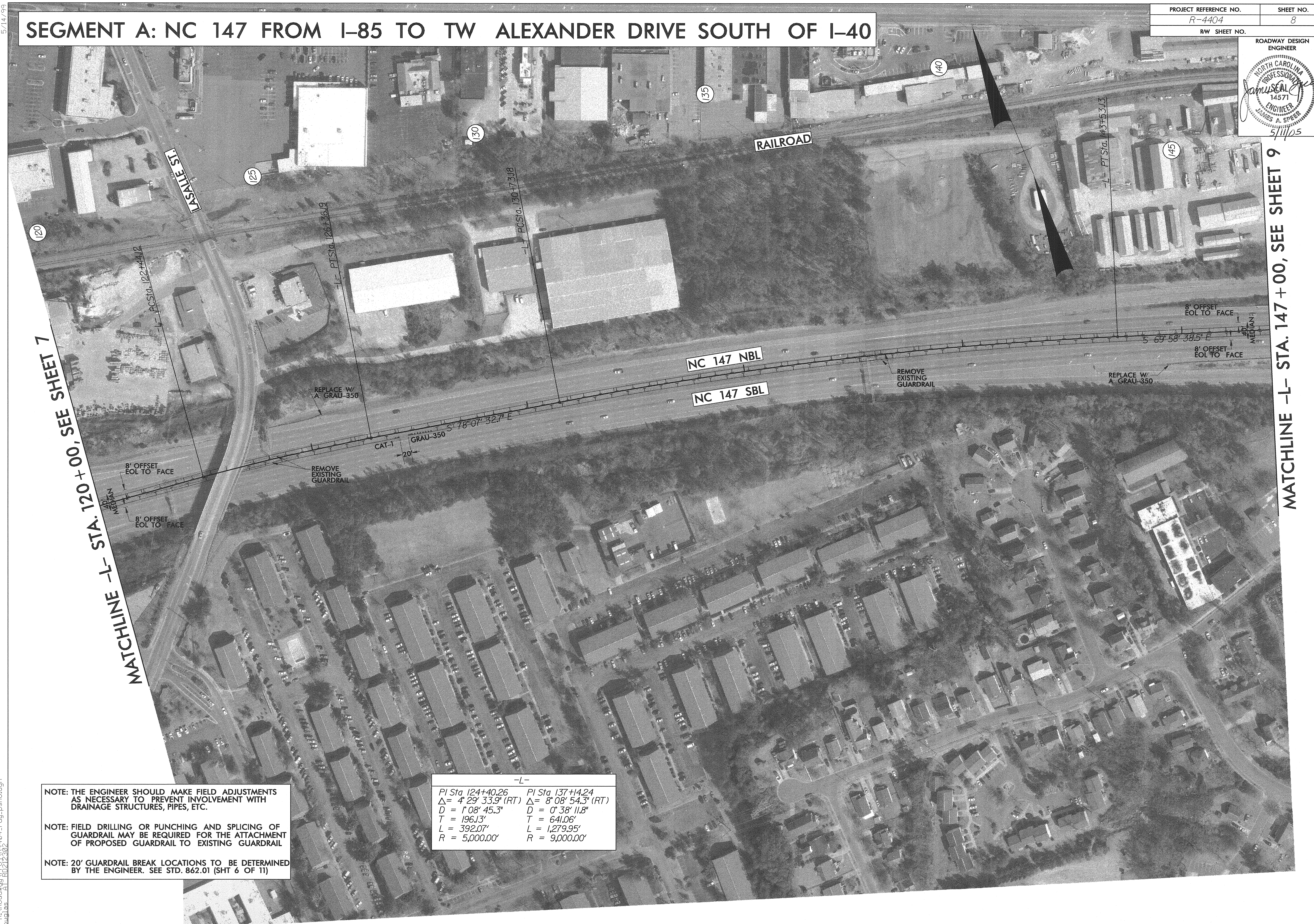


SEGMENT A: NC 147 FROM I-85 TO TW ALEXANDER DRIVE SOUTH OF I-40



MATCHLINE -L- STA. 120+00, SEE SHEET 7

MATCHLINE -L- STA. 147+00, SEE SHEET 9

NOTE: THE ENGINEER SHOULD MAKE FIELD ADJUSTMENTS AS NECESSARY TO PREVENT INVOLVEMENT WITH DRAINAGE STRUCTURES, PIPES, ETC.

NOTE: FIELD DRILLING OR PUNCHING AND SPLICING OF GUARDRAIL MAY BE REQUIRED FOR THE ATTACHMENT OF PROPOSED GUARDRAIL TO EXISTING GUARDRAIL

NOTE: 20' GUARDRAIL BREAK LOCATIONS TO BE DETERMINED BY THE ENGINEER. SEE STD. 862.01 (SHT 6 OF 11)

-L-	
PI Sta 124+40.26	PI Sta 137+14.24
$\Delta = 4^{\circ} 29' 33.9"$ (RT)	$\Delta = 8^{\circ} 08' 54.3"$ (RT)
D = 1' 08' 45.3"	D = 0' 38' 11.8"
T = 196.13'	T = 641.06'
L = 392.07'	L = 1,279.95'
R = 5,000.00'	R = 9,000.00'

R:\MAN-2005_09149_R4404_rdy_psh8.dgn
EADouglas rd-07occe34