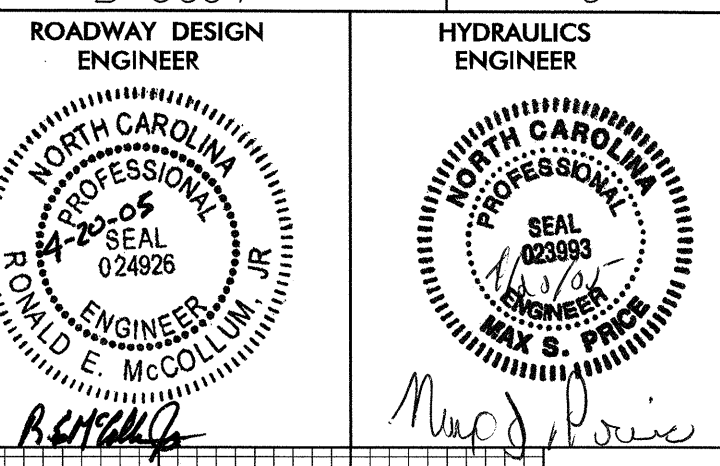


5/14/99



**BRIDGE HYDRAULIC DATA**  
**BRIDGE No. 21 OVER MUD CREEK**

DESIGN DISCHARGE = 6000 CFS  
 DESIGN FREQUENCY = 5 YRS  
 DESIGN HW ELEVATION = 2066.0 FT  
 BASE DISCHARGE = 20000 CFS  
 BASE FREQUENCY = 100 YRS  
 BASE HW ELEVATION = 2070.4 FT  
 OVERTOPPING DISCHARGE = 6000 CFS  
 OVERTOPPING FREQUENCY = 5 YRS  
 OVERTOPPING ELEVATION = 2065.8 FT

EST. NORMAL W.S. ELEVATION = 2054.3 FT  
 DATE OF SURVEY = 10/31/02  
 W.S. ELEVATION AT DATE OF SURVEY = 2054.3 FT

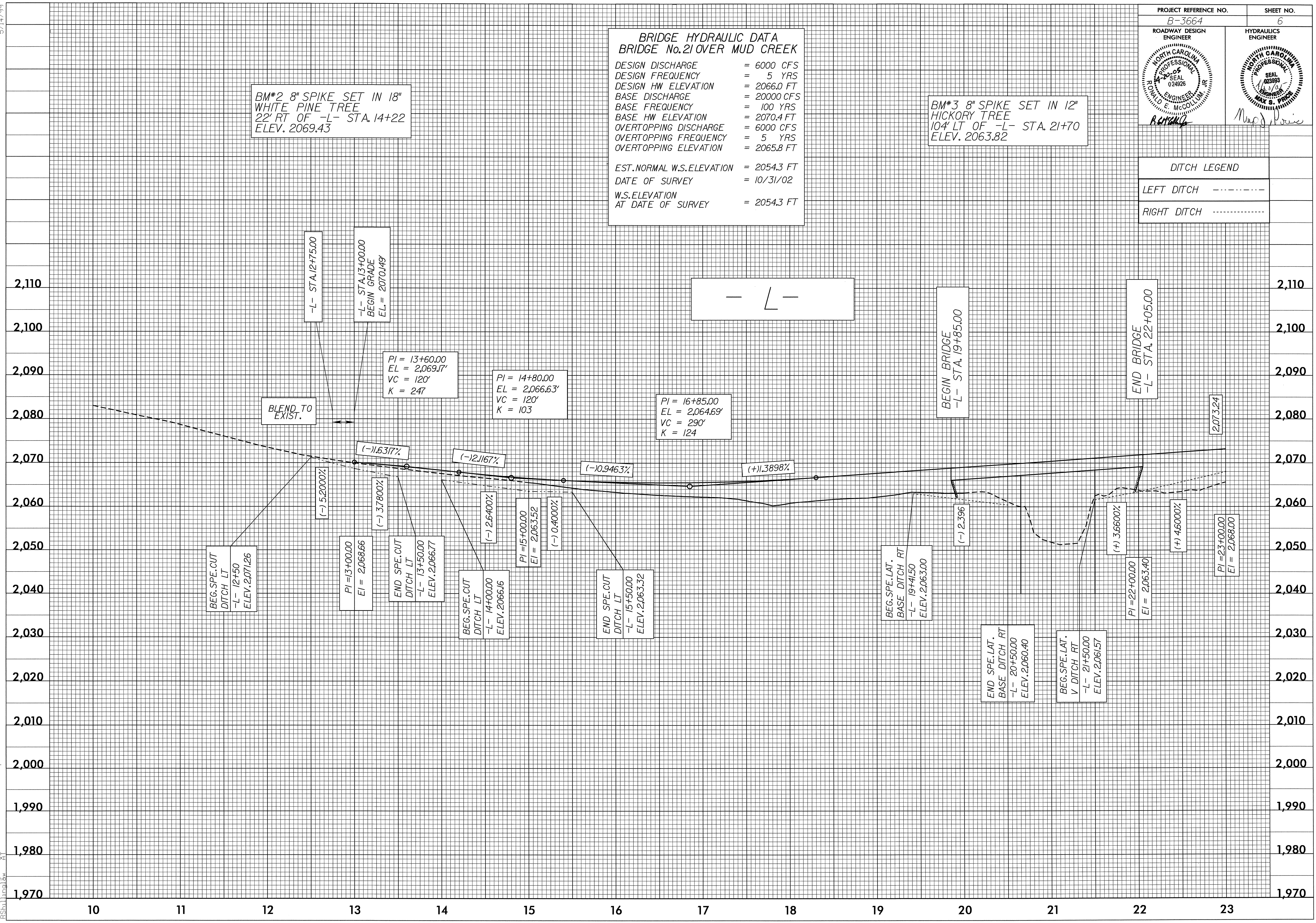
BM\*2 8" SPIKE SET IN 18" WHITE PINE TREE  
 22' RT OF -L- STA. 14+22  
 ELEV. 2069.43

BM\*3 8" SPIKE SET IN 12" HICKORY TREE  
 10' LT OF -L- STA. 21+70  
 ELEV. 2063.82

**DITCH LEGEND**

LEFT DITCH - - - - -

RIGHT DITCH - - - - -



09-MAR-2005 15:03 C:\p033664\RDY\_PFL\_031027.dwg