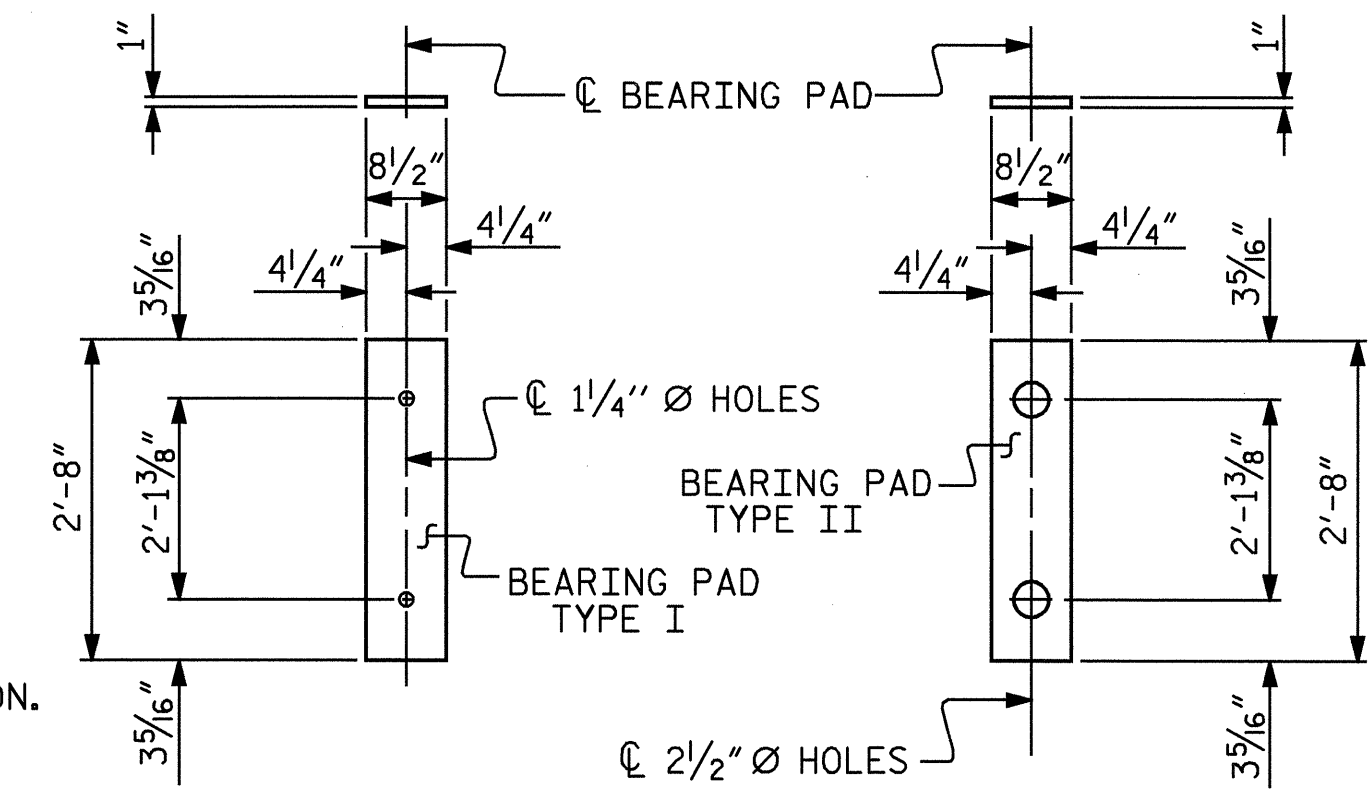


TYPICAL SECTION

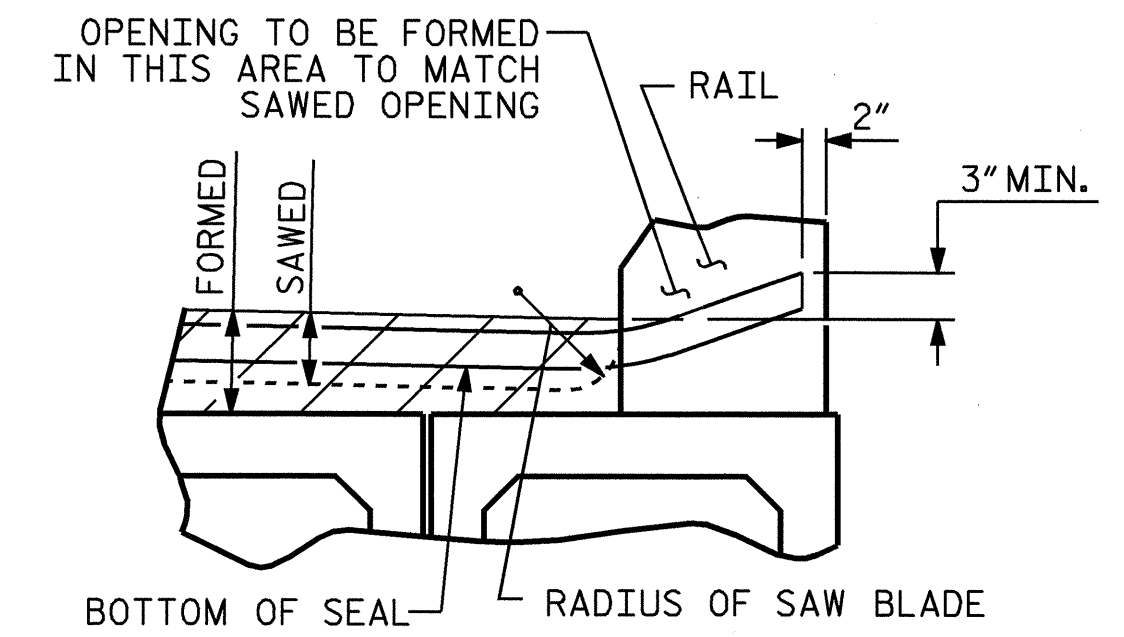
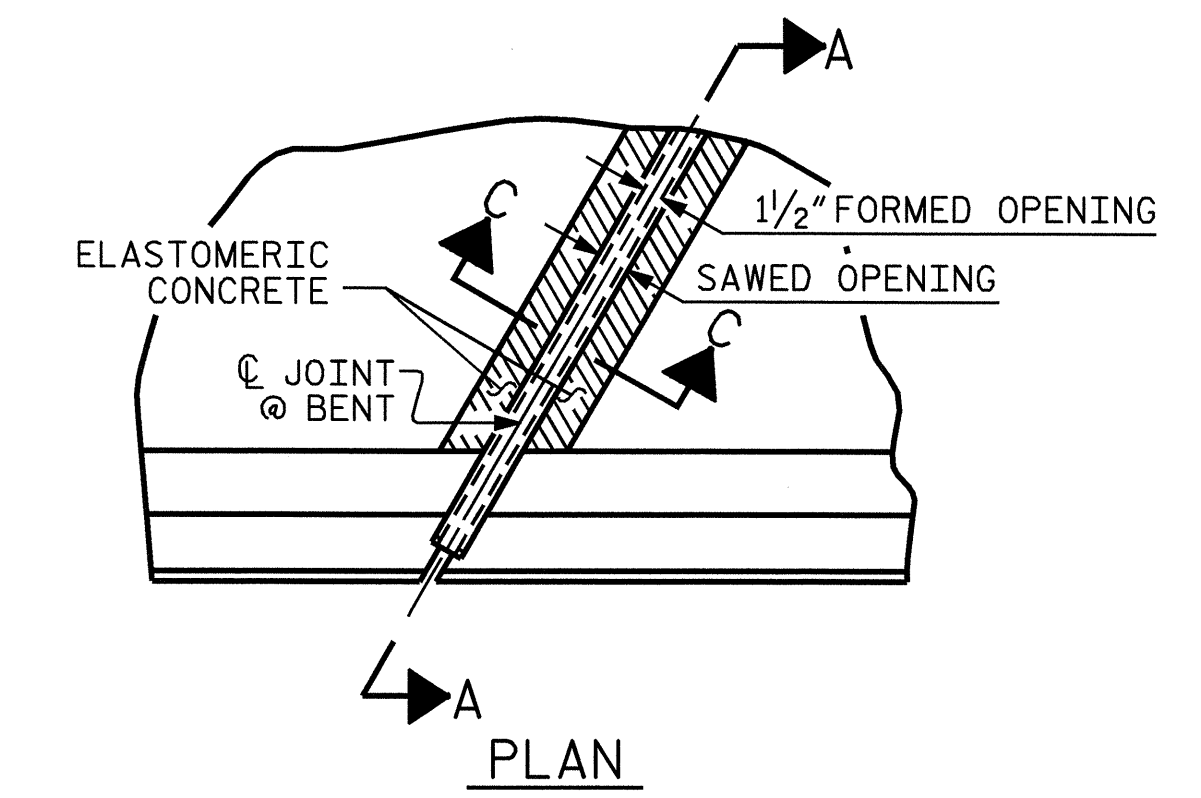
* BASED ON PREDICTED CAMBER.



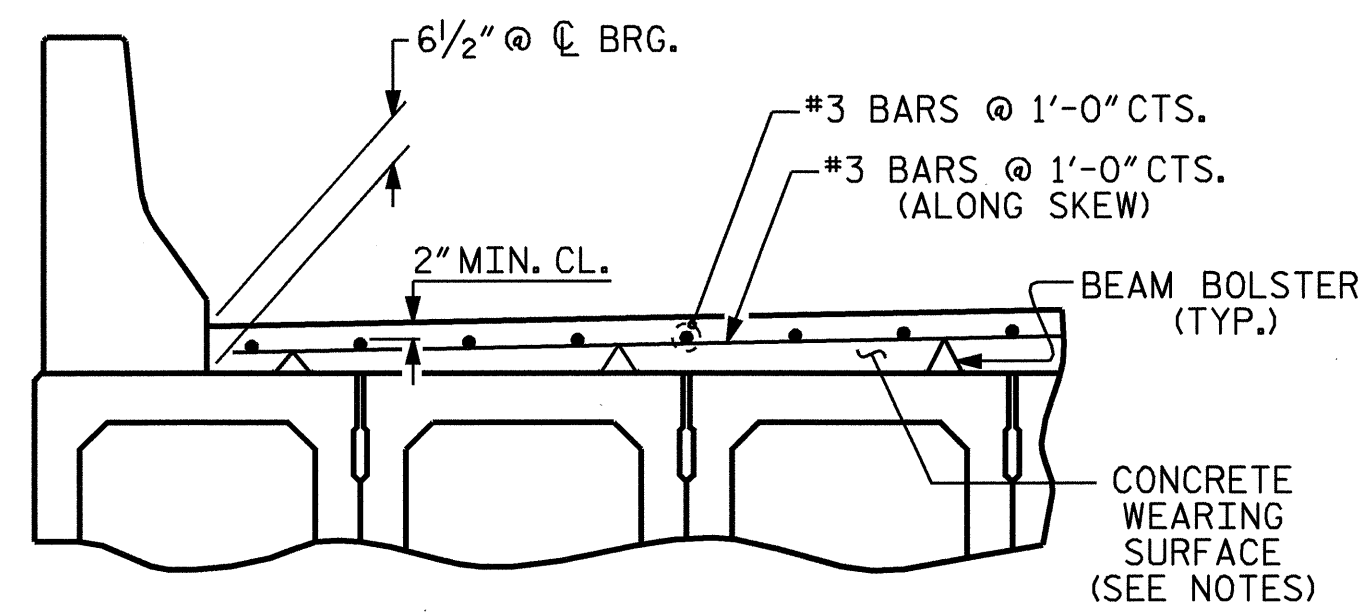
FIXED END (TYPE I - 39 REQ'D)
EXPANSION END (TYPE II - 39 REQ'D)

ELASTOMERIC BEARING DETAILS

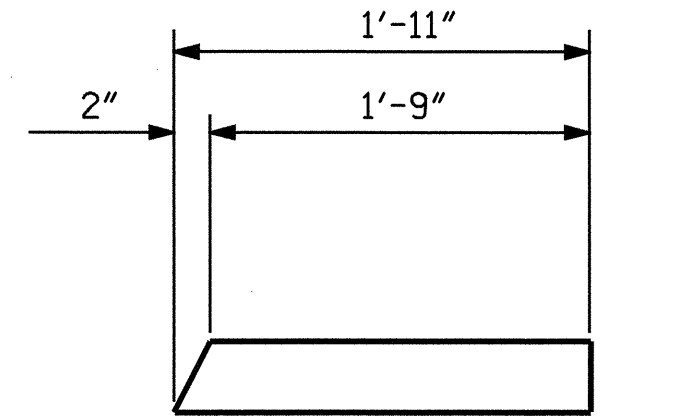
60 DUROMETER



SECTION A-A

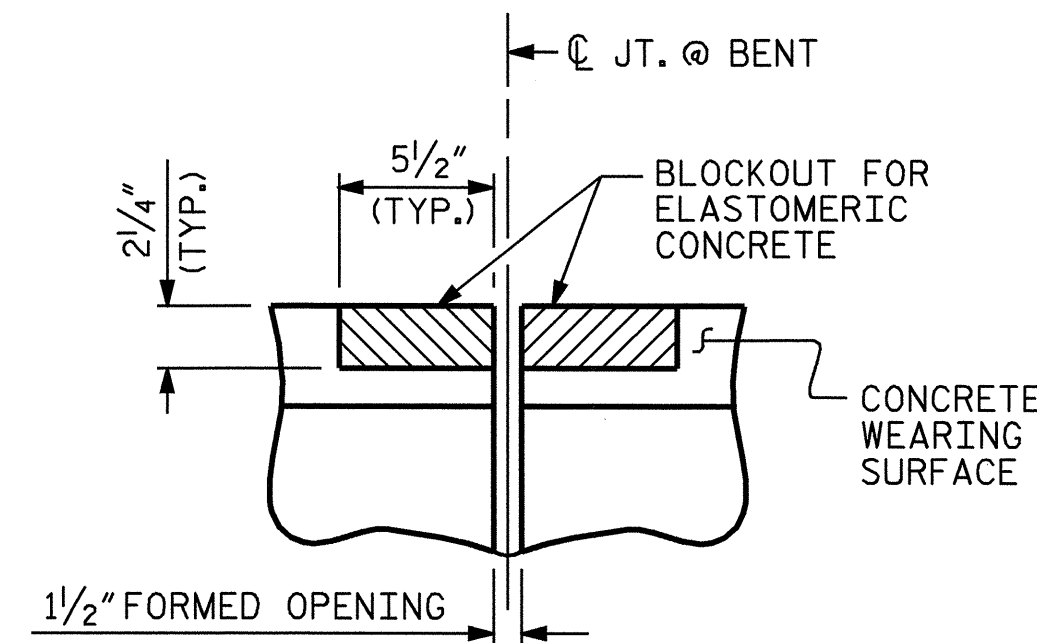


REINFORCING FOR CONCRETE WEARING SURFACE

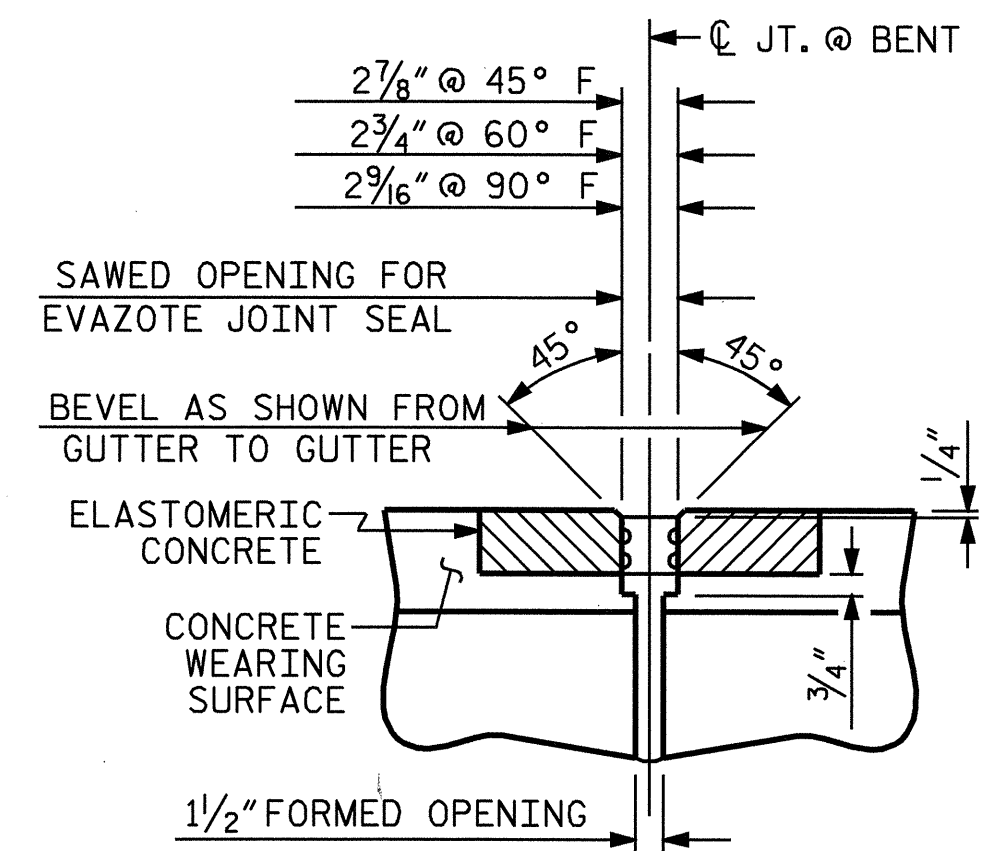


DECK DRAIN

(21 REQUIRED)



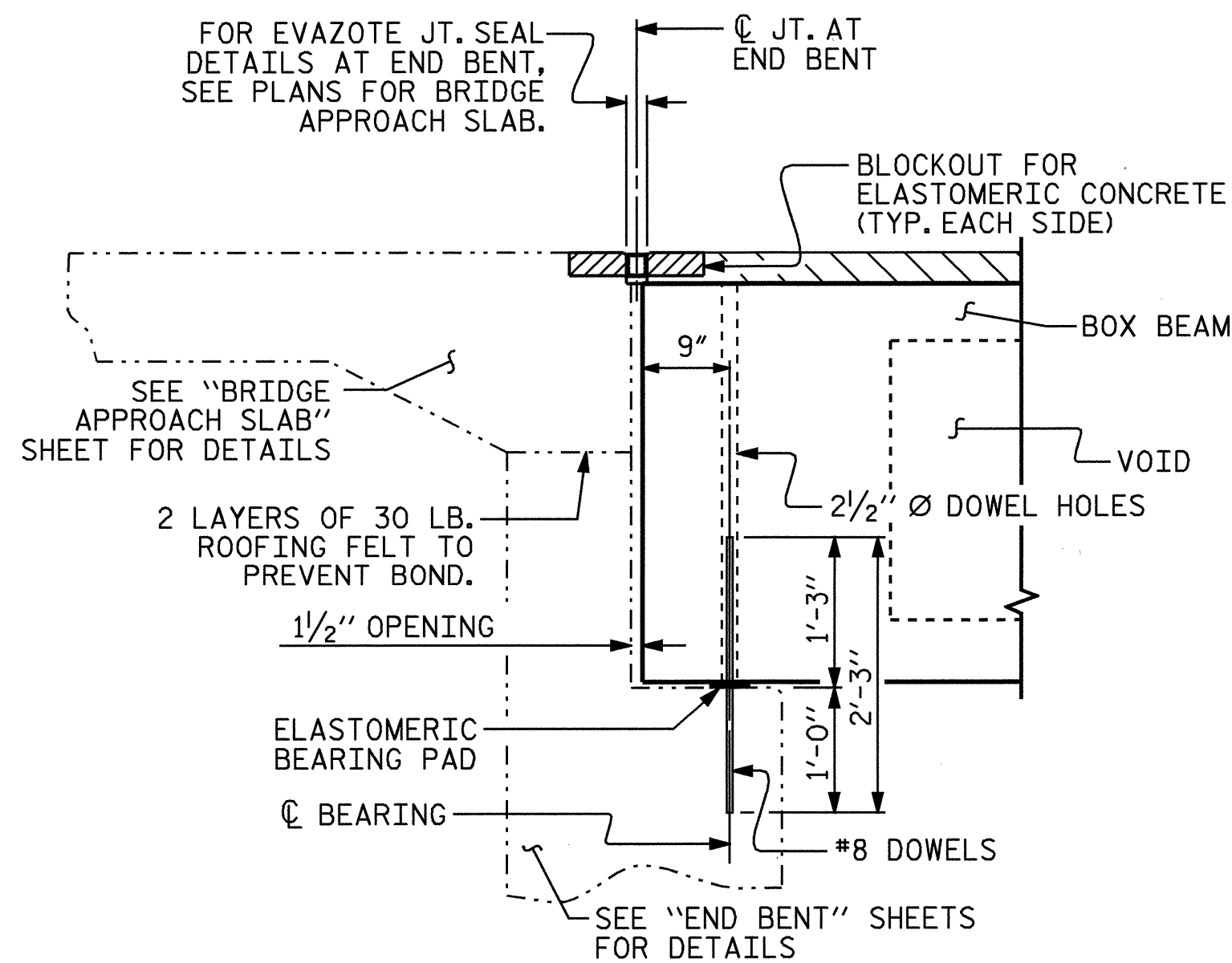
SECTION C-C
 EVAZOTE JOINT SEAL
 (PRE-SAWED ELASTOMERIC CONCRETE DIMENSIONS)



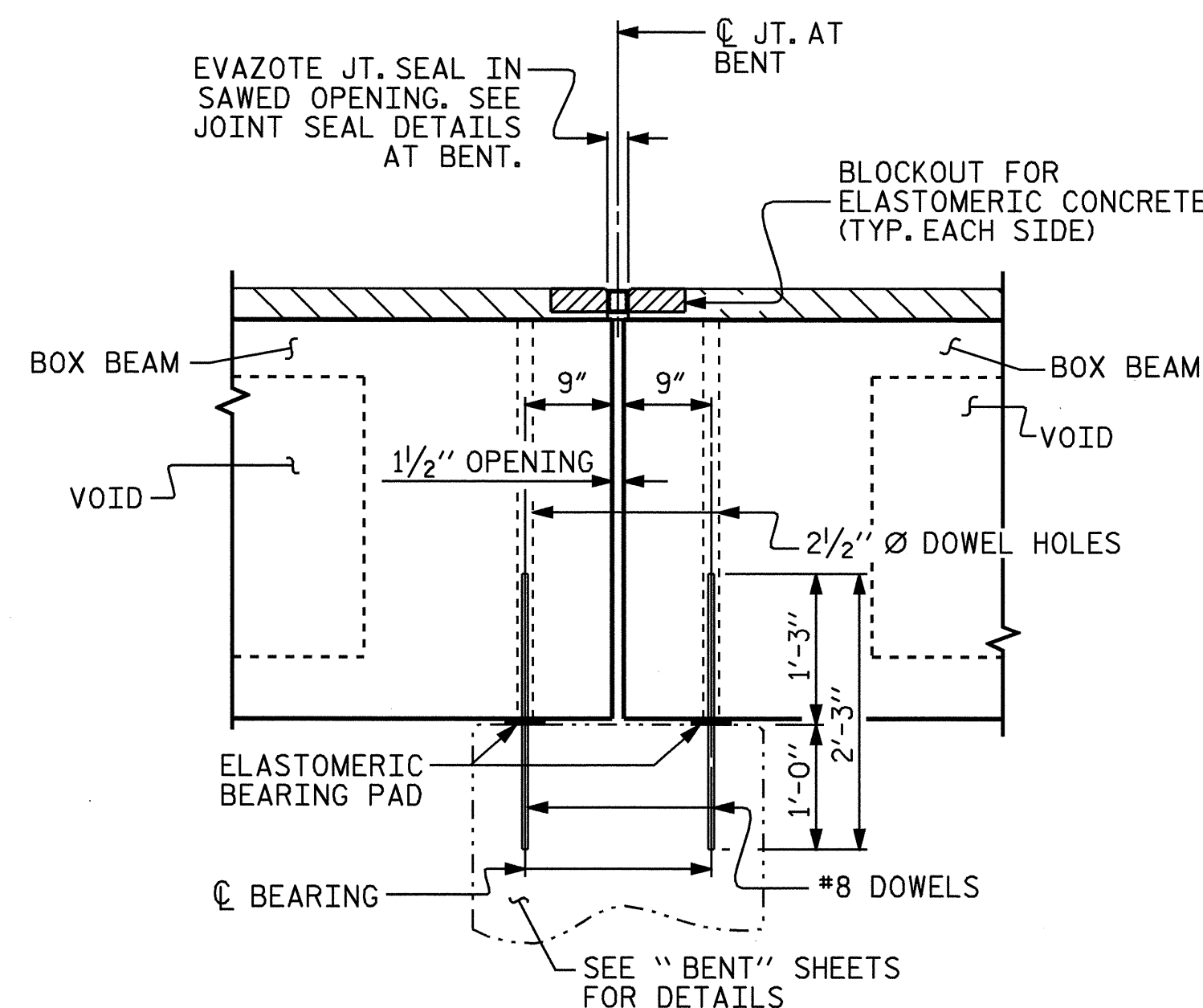
SECTION C-C
 EVAZOTE JOINT SEAL

JOINT SEAL DETAILS AT BENT

THE NOMINAL UNCOMPRESSED SEAL WIDTH OF THE EVAZOTE JOINT SEAL SHALL BE 2 1/2".



SECTION AT END BENT



SECTION AT BENT

ELASTOMERIC CONCRETE	
	ELASTOMERIC CONCRETE * (CU. FT.)
END BENT 1	6.16
BENT 1	6.16
BENT 2	6.16
END BENT 2	6.16
TOTAL	24.64

* BASED ON THE MINIMUM BLOCKOUT SHOWN.

PROJECT NO. B-3664
 HENDERSON COUNTY
 STATION: 20+95.00-L-

SHEET 1 OF 10

STATE OF NORTH CAROLINA
 DEPARTMENT OF TRANSPORTATION
 RALEIGH

STANDARD
 3'-0" X 2'-9"
 PRESTRESSED CONCRETE
 BOX BEAM UNIT



REVISIONS						SHEET NO.
NO.	BY:	DATE:	NO.	BY:	DATE:	S-4
1			3			TOTAL SHEETS
2			4			27

DRAWN BY: V. X. NGUYEN DATE: 3-15-05
 CHECKED BY: D. HODGE DATE: 4-05

08-JUN-2005 08:56
 R:\STRUCT\21\B3664\nguyen\Microstation\B-3664.ed.TS.01.dgn
 dahodge

NCDD