

NOTES

STIRRUPS IN CAP MAY BE SHIFTED AS NECESSARY TO CLEAR DOWELS.

FOR EPOXY PROTECTIVE COATING, SEE SPECIAL PROVISIONS.

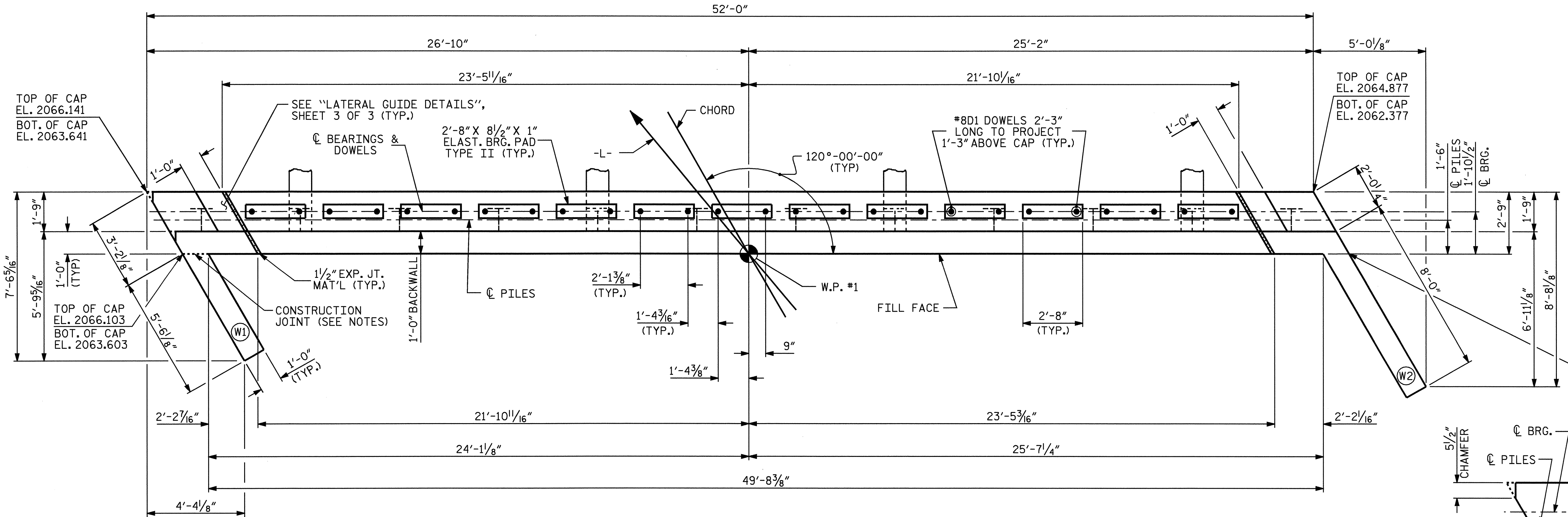
FOR PILE SPLICE DETAILS, SEE SHEET 3 OF 3.

THE CONTRACTOR SHALL PROVIDE FOR INSTALLATION OF THE 4" DIAMETER DRAIN PIPE THROUGH THE WING WALL AS REQUIRED FOR REINFORCED BRIDGE APPROACH FILLS, SEE THE ROADWAY PLANS. REINFORCING STEEL IN THE WING WALL MAY BE SHIFTED AS NECESSARY TO CLEAR THE DRAIN PIPE.

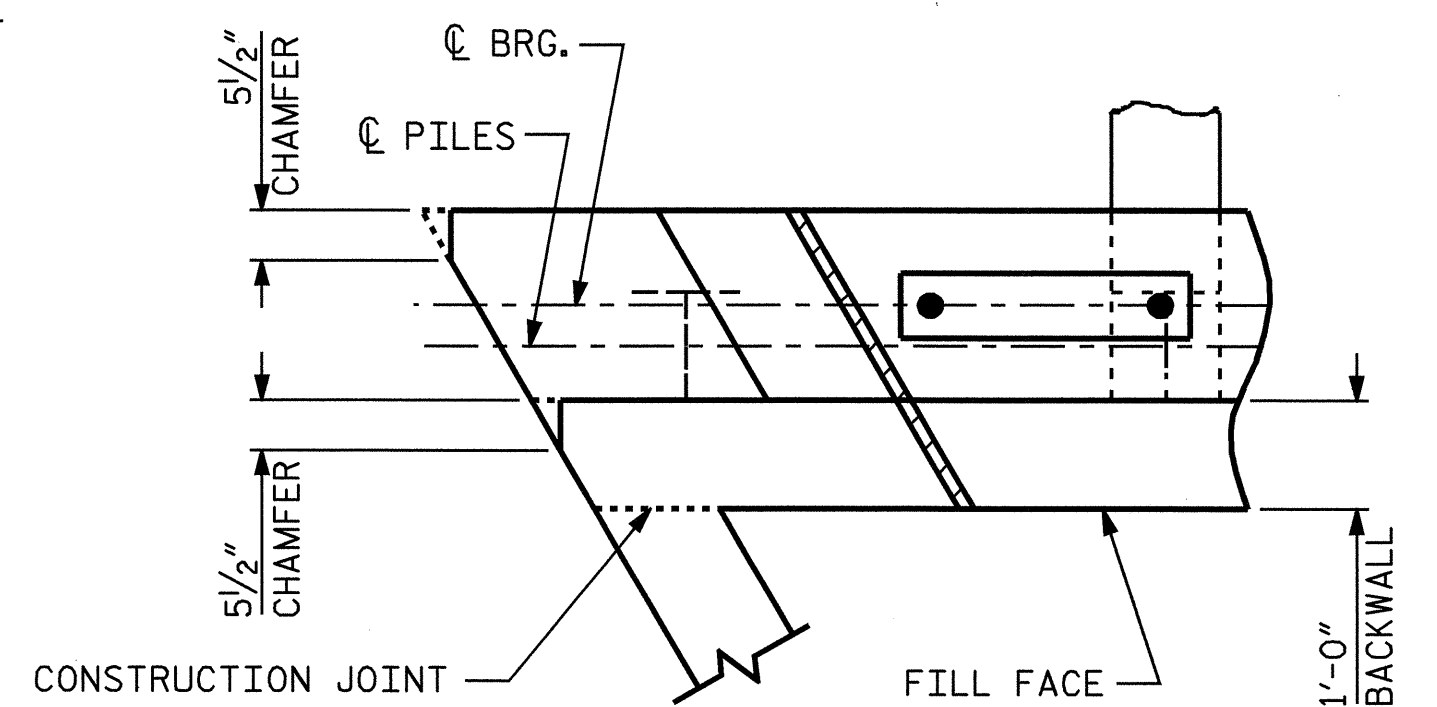
FOR SECTION A-A, SEE SHEET 3 OF 3.

THE LATERAL GUIDE AT EACH END OF THE CAP IS NOT TO BE POURED UNTIL AFTER THE CORED SLAB UNITS ARE IN PLACE.

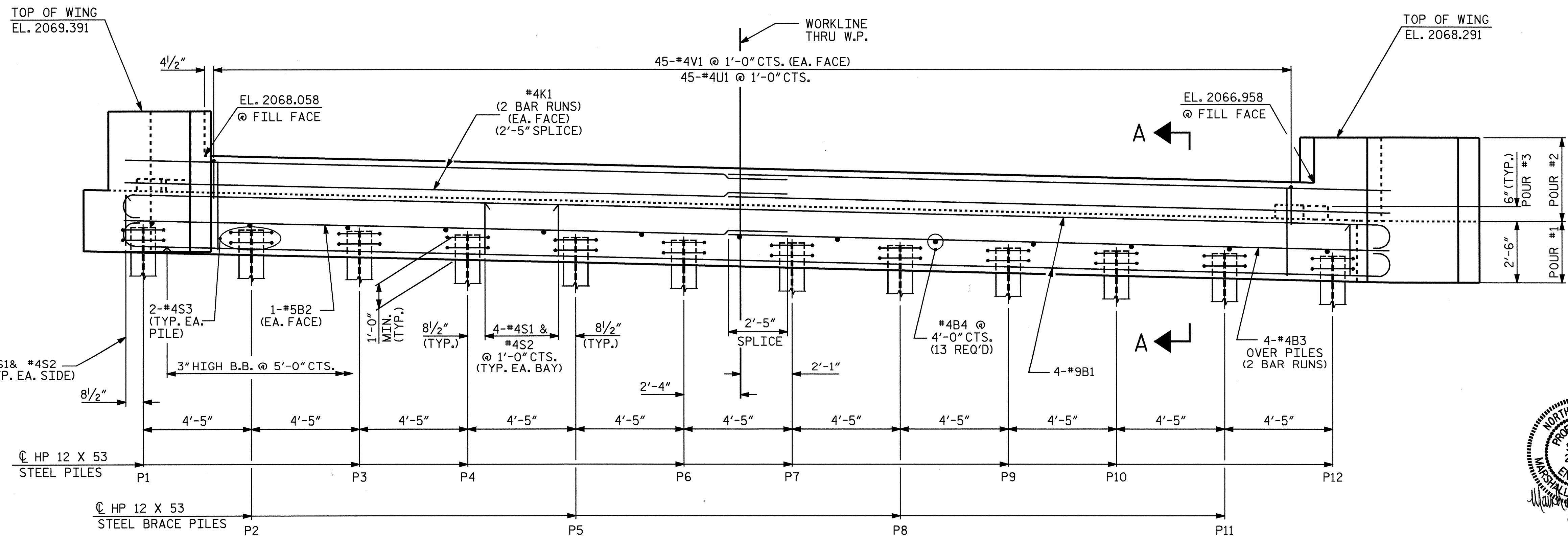
THE CONTRACTOR'S ATTENTION IS CALLED TO THE FACT THAT W1 SHALL NOT BE CONSTRUCTED UNTIL THE CLOSURE OF TRAFFIC AS DETAILED IN THE TRAFFIC CONTROL PLANS.



PLAN



CHAMFERING ACUTE END BENT CORNER



ELEVATION

TOP OF PILE ELEVATION CHART

P1	P2	P3	P4	P5	P6	P7	P8	P9	P10	P11	P12
2064.593	2064.486	2064.379	2064.271	2064.164	2064.057	2063.949	2063.842	2063.735	2063.627	2063.520	2063.413

DRAWN BY : L.L. MURPHY DATE : 04-05
 CHECKED BY : D. HODGE DATE : 05-05

06-JUN-2005 14:43
 R:\STRUCT\2005\3664\lrmurphy\MICROS\2005\3664.dgn
 wjharris



PROJECT NO. B-3664
HENDERSON COUNTY
 STATION: 20+95.00-L-

SHEET 1 OF 3

STATE OF NORTH CAROLINA
 DEPARTMENT OF TRANSPORTATION
 RALEIGH

**SUBSTRUCTURE
 END BENT NO.1**

REVISIONS						SHEET NO.	
NO.	BY:	DATE:	NO.	BY:	DATE:	S-14	
1			3			TOTAL SHEETS 27	
2			4				

NC006