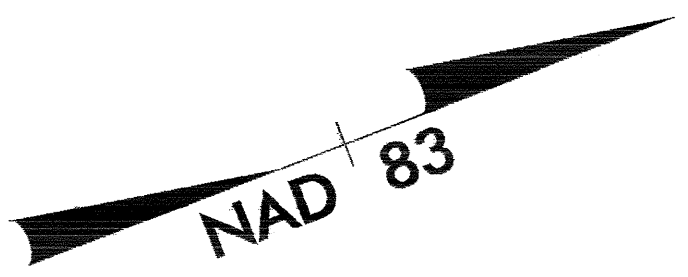


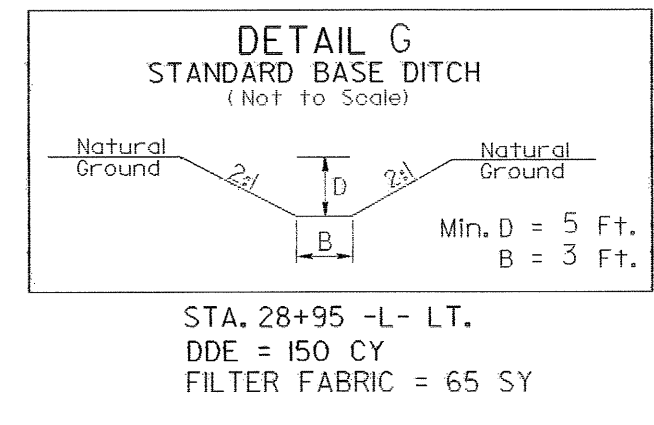
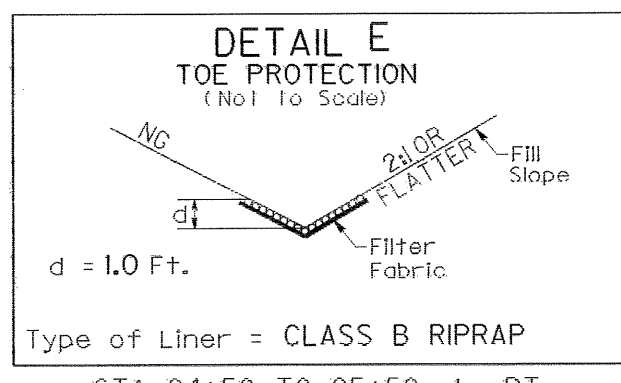
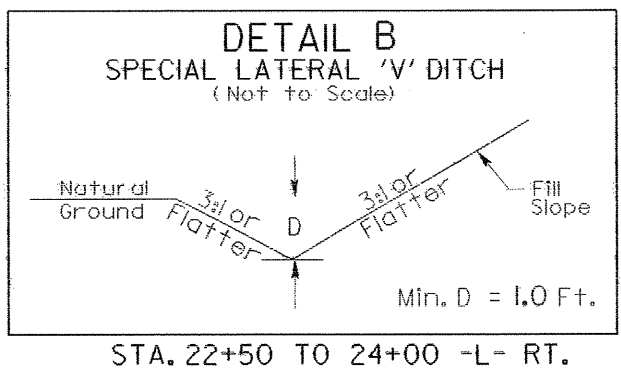
PROJECT REFERENCE NO. B-3664	SHEET NO. EC-5/CONST.5
RW SHEET NO.	
ROADWAY DESIGN ENGINEER	HYDRAULICS ENGINEER

SEE SHEET 7 FOR -L- PROFILE
SEE SHEET 8 FOR -DRI- PROFILE



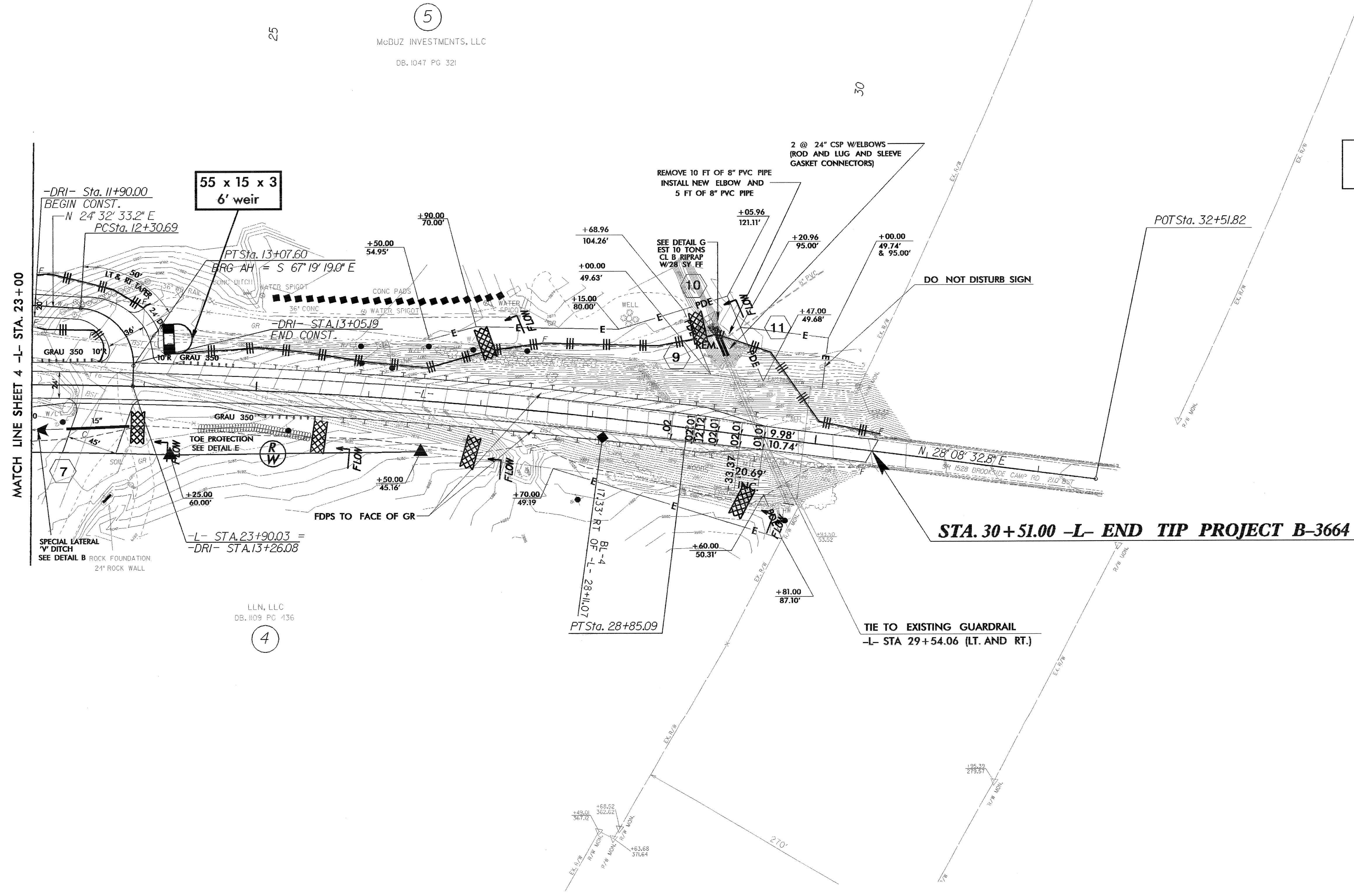
CLEARING AND GRUBBING
EROSION CONTROL FOR
CONSTRUCTION SHEET 5

NOTE:
PLACE TEMPORARY ROCK SEDIMENT DAMS TYPE - B
AND TEMPORARY ROCK SILT CHECKS TYPE - A AT
DRAINAGE OUTLETS.



-DRI-
PI Sta 12+79.09
 $\Delta = 88^{\circ} 08' 07.8''$ (RT)
D = 114' 35" 29.6"
L = 76.9'
T = 48.40'
R = 50.00'

-L-
PI Sta 21+40.23
 $\Delta = 17^{\circ} 12' 04.8''$ (RT)
D = 1' 08" 45.3"
L = 1501.0'
T = 756.24'
R = 5,000.00'
SE = .02 FT/FT
RUNOFF = 41.38'
INCR. = 20.69' PER .01 SE



MATCH LINE SHEET 4 -L- STA. 23+00

STA. 30+51.00 -L- END TIP PROJECT B-3664

LLN, LLC
DB. 1109 PC 436
4

5
McBUZ INVESTMENTS, LLC
DB. 1047 PG 321