

DEAD LOAD DEFLECTION TABLE FOR SPANS A AND D																																	
1/2" LOW RELAXATION	GIRDER 1											GIRDERS 2 & 3									GIRDER 4												
TENTH POINTS	0	.1	.2	.3	.4	.5	.6	.7	.8	.9	0	0	.1	.2	.3	.4	.5	.6	.7	.8	.9	0	0	.1	.2	.3	.4	.5	.6	.7	.8	.9	0
CAMBER (GIRDER ALONE IN PLACE)	↑ 0.0	0.027	0.050	0.069	0.081	0.085	0.081	0.069	0.050	0.027	0.0	0.0	0.027	0.050	0.069	0.081	0.085	0.081	0.069	0.050	0.027	0.0	0.0	0.027	0.050	0.069	0.081	0.085	0.081	0.069	0.050	0.027	0.0
* DEFLECTION DUE TO SUPERIMPOSED D.L.	↓ 0.0	0.010	0.019	0.026	0.031	0.032	0.031	0.026	0.019	0.010	0.0	0.0	0.011	0.021	0.029	0.034	0.036	0.034	0.029	0.021	0.011	0.0	0.0	0.010	0.018	0.025	0.029	0.031	0.029	0.025	0.018	0.010	0.0
FINAL CAMBER	↑ 0.0	3/16"	3/8"	1/2"	5/8"	5/8"	5/8"	1/2"	3/8"	3/16"	0.0	0.0	3/16"	3/8"	1/2"	5/8"	5/8"	5/8"	1/2"	3/8"	3/16"	0.0	0.0	3/16"	3/8"	1/2"	5/8"	5/8"	5/8"	1/2"	3/8"	3/16"	0.0

* INCLUDES FUTURE WEARING SURFACE
ALL VALUES ARE SHOWN IN FEET (DECIMAL FORM), EXCEPT "FINAL CAMBER", WHICH IS GIVEN IN INCHES (FRACTION FORM).

DEAD LOAD DEFLECTION TABLE FOR SPANS B AND C																																	
1/2" LOW RELAXATION	GIRDER 1											GIRDERS 2 & 3									GIRDER 4												
TENTH POINTS	0	.1	.2	.3	.4	.5	.6	.7	.8	.9	0	0	.1	.2	.3	.4	.5	.6	.7	.8	.9	0	0	.1	.2	.3	.4	.5	.6	.7	.8	.9	0
CAMBER (GIRDER ALONE IN PLACE)	↑ 0.0	0.027	0.052	0.071	0.083	0.087	0.083	0.071	0.052	0.027	0.0	0.0	0.027	0.052	0.071	0.083	0.087	0.083	0.071	0.052	0.027	0.0	0.0	0.027	0.052	0.071	0.083	0.087	0.083	0.071	0.052	0.027	0.0
* DEFLECTION DUE TO SUPERIMPOSED D.L.	↓ 0.0	0.011	0.021	0.029	0.034	0.035	0.034	0.029	0.021	0.011	0.0	0.0	0.011	0.023	0.032	0.037	0.039	0.037	0.032	0.023	0.011	0.0	0.0	0.010	0.020	0.027	0.032	0.033	0.033	0.032	0.027	0.020	0.0
FINAL CAMBER	↑ 0.0	3/16"	3/8"	1/2"	5/8"	5/8"	5/8"	1/2"	3/8"	3/16"	0.0	0.0	3/8"	3/8"	7/16"	9/16"	9/16"	9/16"	7/16"	3/8"	3/8"	0.0	0.0	3/16"	3/8"	1/2"	5/8"	5/8"	5/8"	1/2"	3/8"	3/16"	0.0

* INCLUDES FUTURE WEARING SURFACE
ALL VALUES ARE SHOWN IN FEET (DECIMAL FORM), EXCEPT "FINAL CAMBER", WHICH IS GIVEN IN INCHES (FRACTION FORM).

NOTES

ALL PRESTRESSING STRANDS SHALL BE 7-WIRE LOW-RELAXATION GRADE 270 STRANDS AND SHALL CONFORM TO AASHTO M203 EXCEPT FOR SAMPLING REQUIREMENTS WHICH SHALL BE IN ACCORDANCE WITH THE STANDARD SPECIFICATIONS.

TIE ROD ASSEMBLY SHALL BE AASHTO M270 GRADE 36 STRUCTURAL STEEL.

ALL REINFORCING STEEL SHALL BE GRADE 60.

APPLY EPOXY PROTECTIVE COATING TO END OF GIRDER SURFACES INDICATED IN ELEVATION VIEW. FOR EPOXY PROTECTIVE COATING, SEE SPECIAL PROVISIONS.

EMBEDDED PLATE "B-1" SHALL BE GALVANIZED IN ACCORDANCE WITH THE STANDARD SPECIFICATIONS. BEVEL EDGES OF PLATE "B-1" TO GIVE CLOSE FIT BUT NOT TIGHT FIT TO STEEL CASTING FORM.

ANCHOR STUDS SHALL CONFORM TO AASHTO M169 GRADES 1010 THROUGH 1020 OR APPROVED EQUAL, AND SHALL MEET THE TYPE "B" REQUIREMENTS OF SUBSECTION 7.3 OF THE ANSI/AASHTO/AWS D1.5 BRIDGE WELDING CODE.

AT ENDS OF GIRDERS TO BE EMBEDDED IN CONCRETE DIAPHRAGMS OR END WALLS, PRESTRESSING STRANDS MAY EXTEND A MAXIMUM OF 2" BEYOND THE GIRDER ENDS. OTHERWISE, PRESTRESSING STRANDS SHALL BE CUT FLUSH WITH THE GIRDER ENDS.

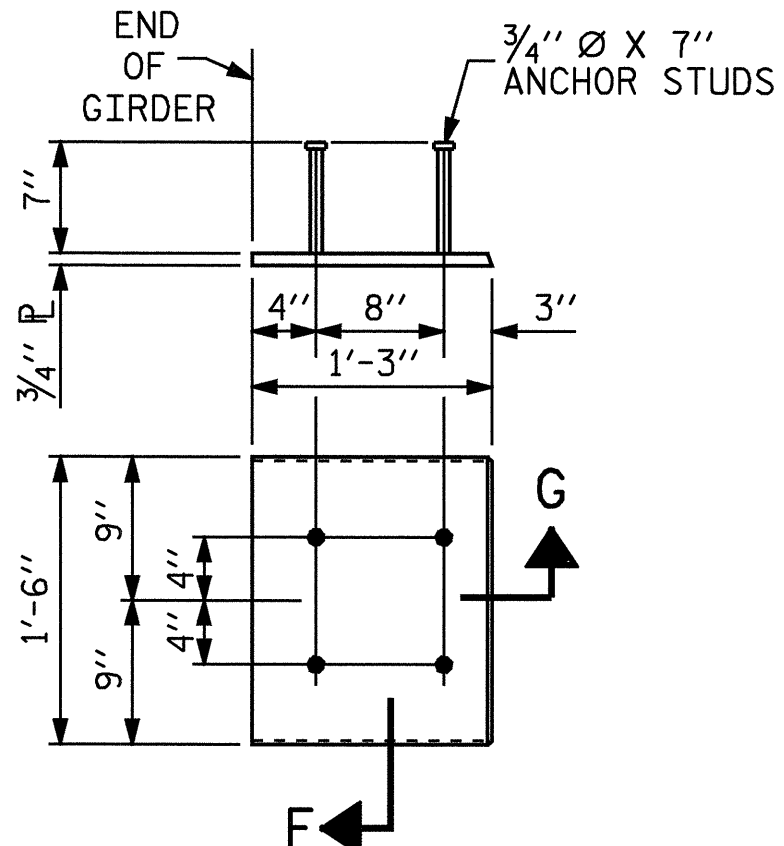
THE TRANSFER OF LOAD FROM THE ANCHORAGES TO THE GIRDER SHALL BE DONE WHEN CONCRETE HAS REACHED A COMPRESSIVE STRENGTH OF NOT LESS THAN 4500 PSI.

DEPENDING ON THE TYPE OF SYSTEM USED TO SUPPORT THE DECK SLAB FORMS, PRESET ANCHORS MAY BE NECESSARY IN THE PRESTRESSED CONCRETE GIRDER.

THE TOP SURFACE OF THE GIRDER, EXCLUDING THE OUTSIDE 4", SHALL BE RAKED TO A DEPTH OF 1/4".

FOR VERTICAL CRACKS IN PRESTRESSED CONCRETE GIRDERS PRIOR TO DETENSIONING, SEE SPECIAL PROVISIONS.

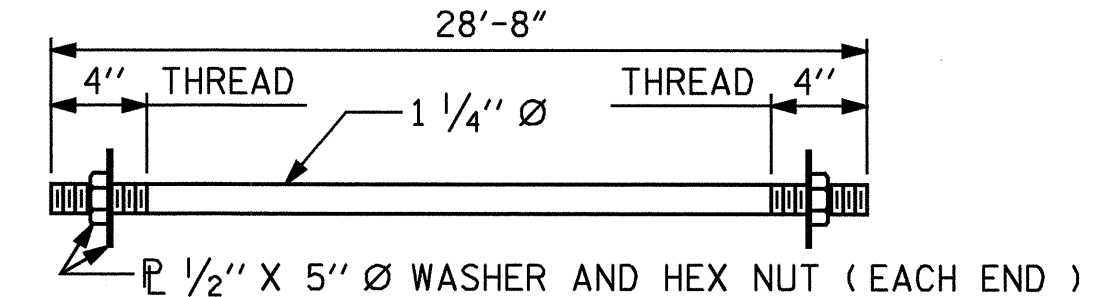
FOR PRESTRESSED CONCRETE MEMBERS, SEE SPECIAL PROVISIONS.



TIE ROD PLACEMENT								
GIRDER	SPAN A		SPAN B		SPAN C		SPAN D	
	"A"	"B"	"A"	"B"	"A"	"B"	"A"	"B"
GDR. 1	20'-11 1/8"	22'-6 7/8"	21'-9 3/4"	22'-4 1/4"	22'-4 1/4"	21'-9 3/4"	22'-6 7/8"	20'-11 1/8"
GDR. 2	21'-5 3/4"	22'-0 1/4"	21'-11 7/8"	22'-2 1/8"	22'-2 1/8"	21'-11 7/8"	22'-0 1/4"	21'-5 3/4"
GDR. 3	22'-0 1/4"	21'-5 3/4"	22'-2 1/8"	21'-11 7/8"	21'-11 7/8"	22'-2 1/8"	21'-5 3/4"	22'-0 1/4"
GDR. 4	22'-6 7/8"	20'-11 1/8"	22'-4 1/4"	21'-9 3/4"	21'-9 3/4"	22'-4 1/4"	20'-11 1/8"	22'-6 7/8"

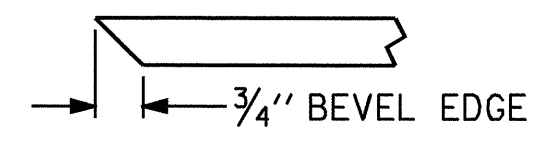
EMBEDDED PLATE "B-1" DETAILS FOR AASHTO TYPE II GIRDER

(2 REQ'D PER GIRDER)

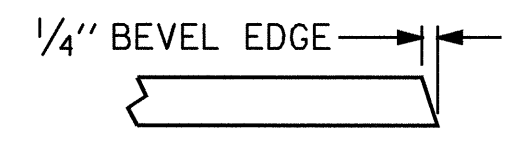


1 1/4" Ø TIE ROD ASSEMBLY

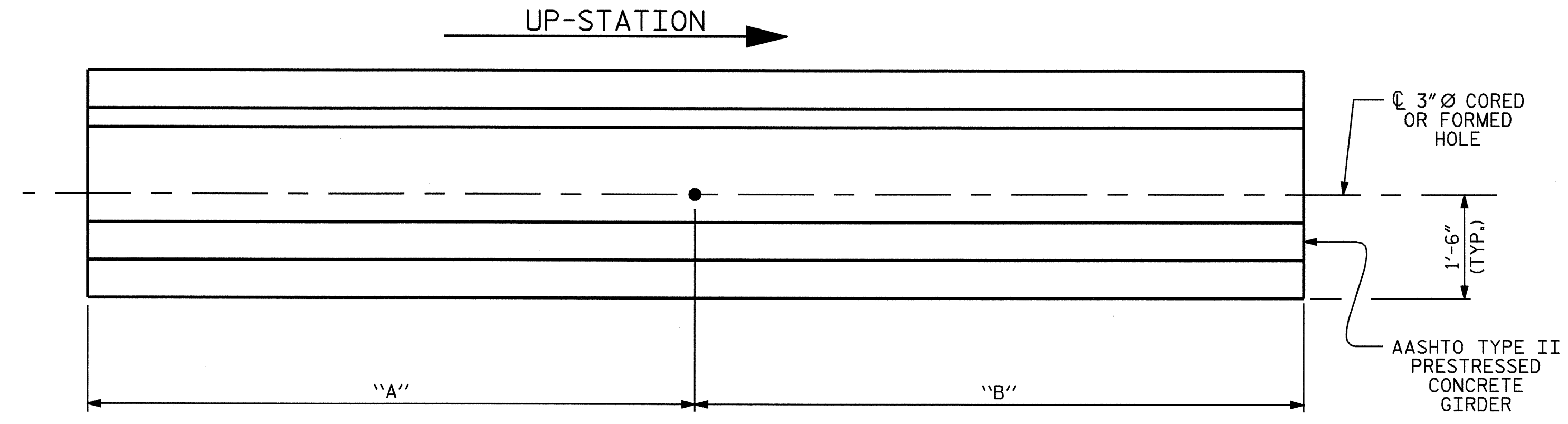
(4 COMPLETE ASSEMBLIES REQUIRED)



SECTION "F"
(SEE NOTES)



SECTION "G"



ELEVATION OF GIRDER

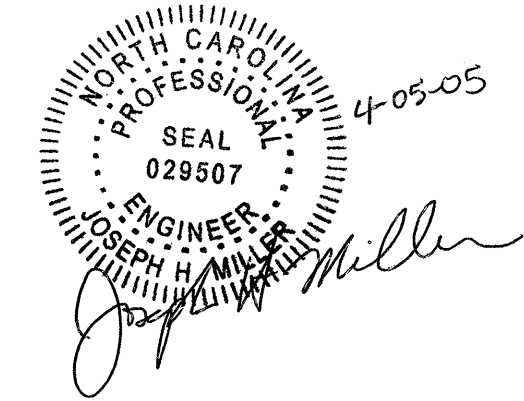
TIE ROD PLACEMENT DETAILS

PROJECT NO. B-3467
HALIFAX COUNTY
STATION: 20+75.00 -L-

SHEET 3 OF 3

STATE OF NORTH CAROLINA
DEPARTMENT OF TRANSPORTATION
RALEIGH

**STANDARD
PRESTRESSED CONCRETE GIRDER
CONTINUOUS FOR LIVE LOAD
DETAILS**



REVISIONS						SHEET NO.
NO.	BY:	DATE:	NO.	BY:	DATE:	S-12
1			3			TOTAL SHEETS
2			4			60

DRAWN BY: B.N.BARODAWALA DATE: 2-7-03
CHECKED BY: J.H. MILLER DATE: 1-10-05