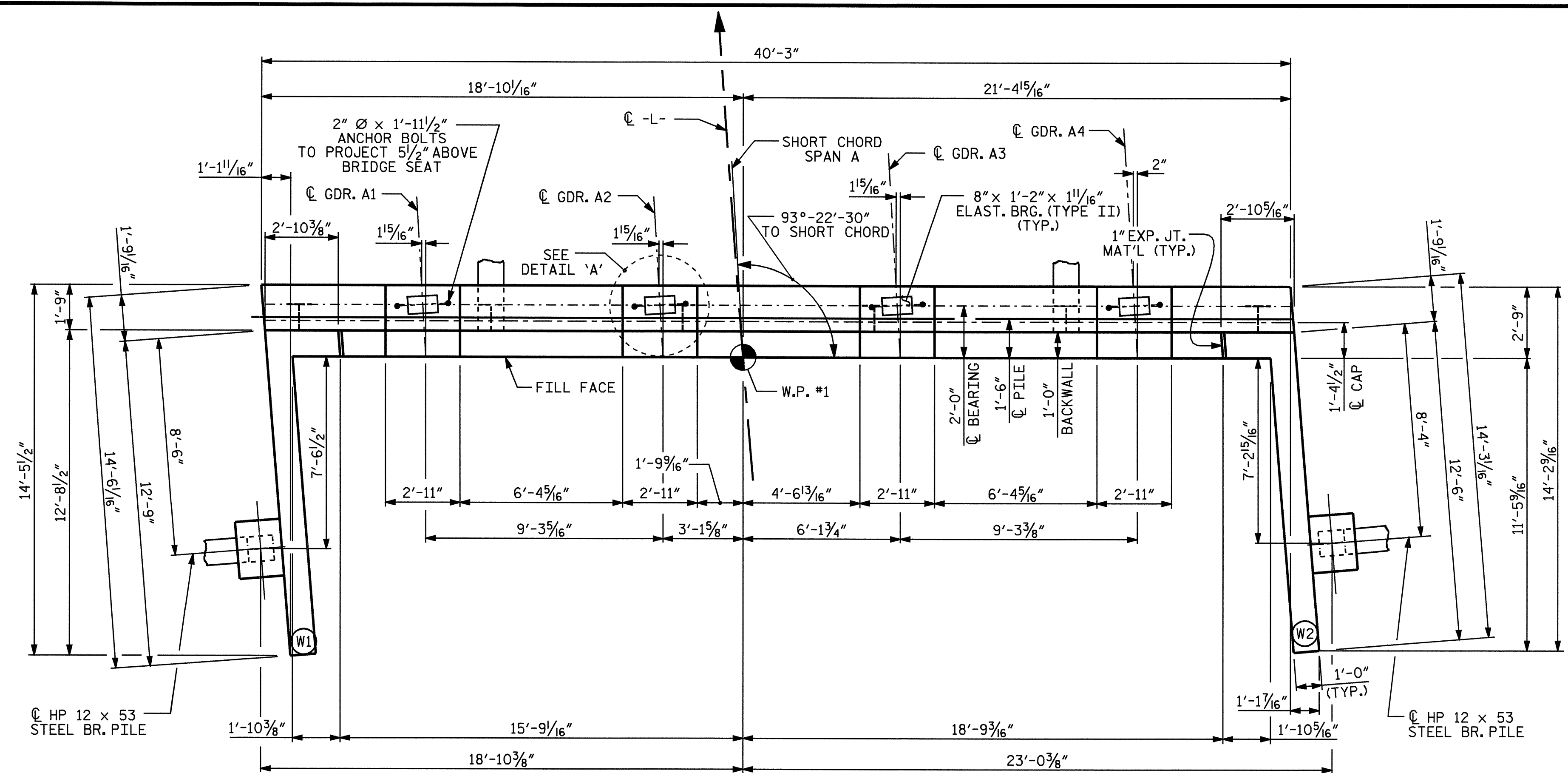
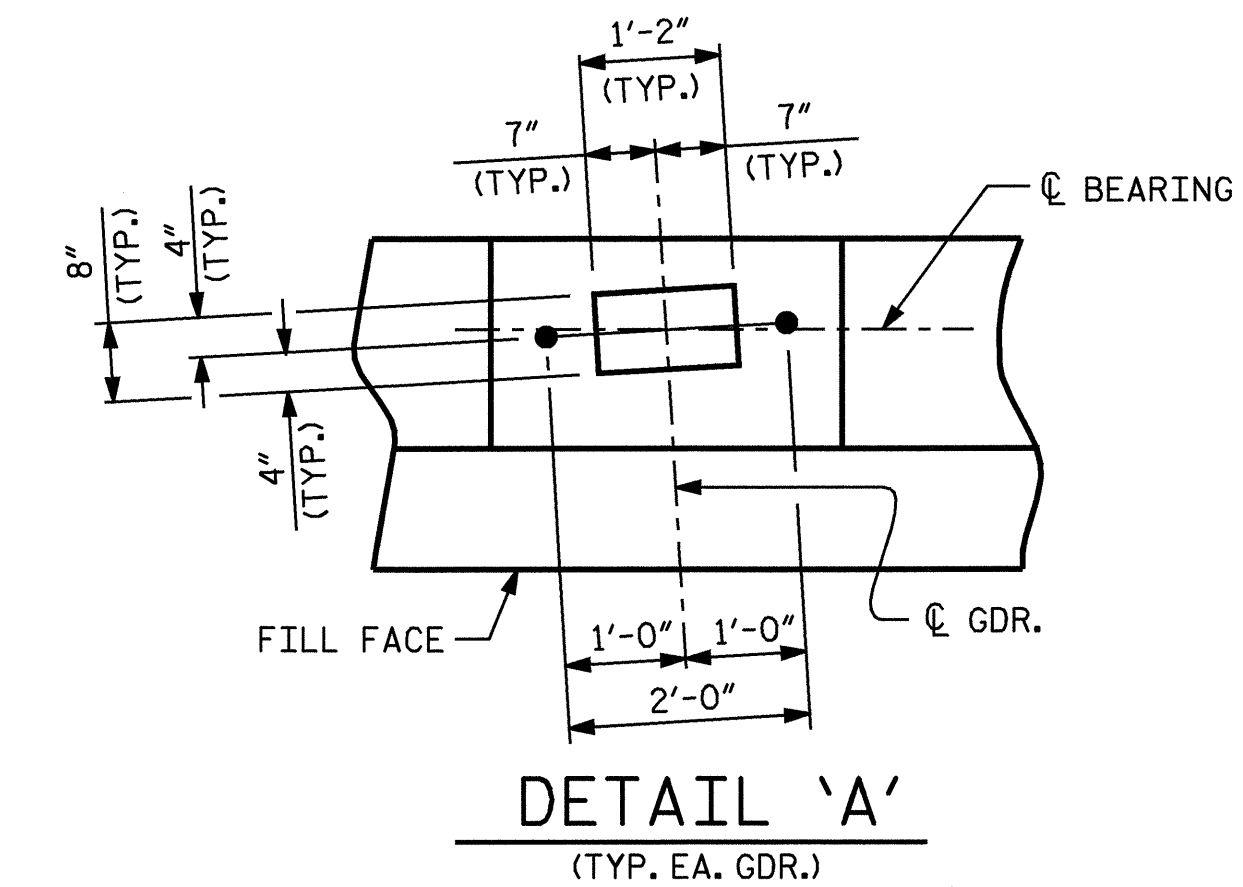


NOTES

STIRRUPS IN CAP MAY BE SHIFTED AS NECESSARY TO CLEAR ANCHOR BOLTS.
 FOR EPOXY PROTECTIVE COATING, SEE SPECIAL PROVISIONS.
 BACKWALL SHALL BE PLACED BEFORE APPLYING THE EPOXY PROTECTIVE COATING.
 THE TOP SURFACE AREAS OF THE CAPS SHALL BE CURED IN ACCORDANCE WITH THE STANDARD SPECIFICATIONS EXCEPT THE MEMBRANE CURING COMPOUND METHOD SHALL NOT BE USED.
 THE TOP SURFACE OF THE CAP EXCEPT THE BRIDGE SEAT BUILDUPS SHALL BE SLOPED TRANSVERSELY FROM THE FILL FACE TO THE BACK FACE AT THE RATE OF 2%.
 THE CONTRACTOR SHALL PROVIDE FOR INSTALLATION OF THE 4" DIAMETER DRAIN PIPE THROUGH THE WING WALL AS REQUIRED FOR REINFORCED BRIDGE APPROACH FILLS, SEE THE ROADWAY PLANS. REINFORCING STEEL IN THE WING WALL MAY BE SHIFTED AS NECESSARY TO CLEAR THE DRAIN PIPE.



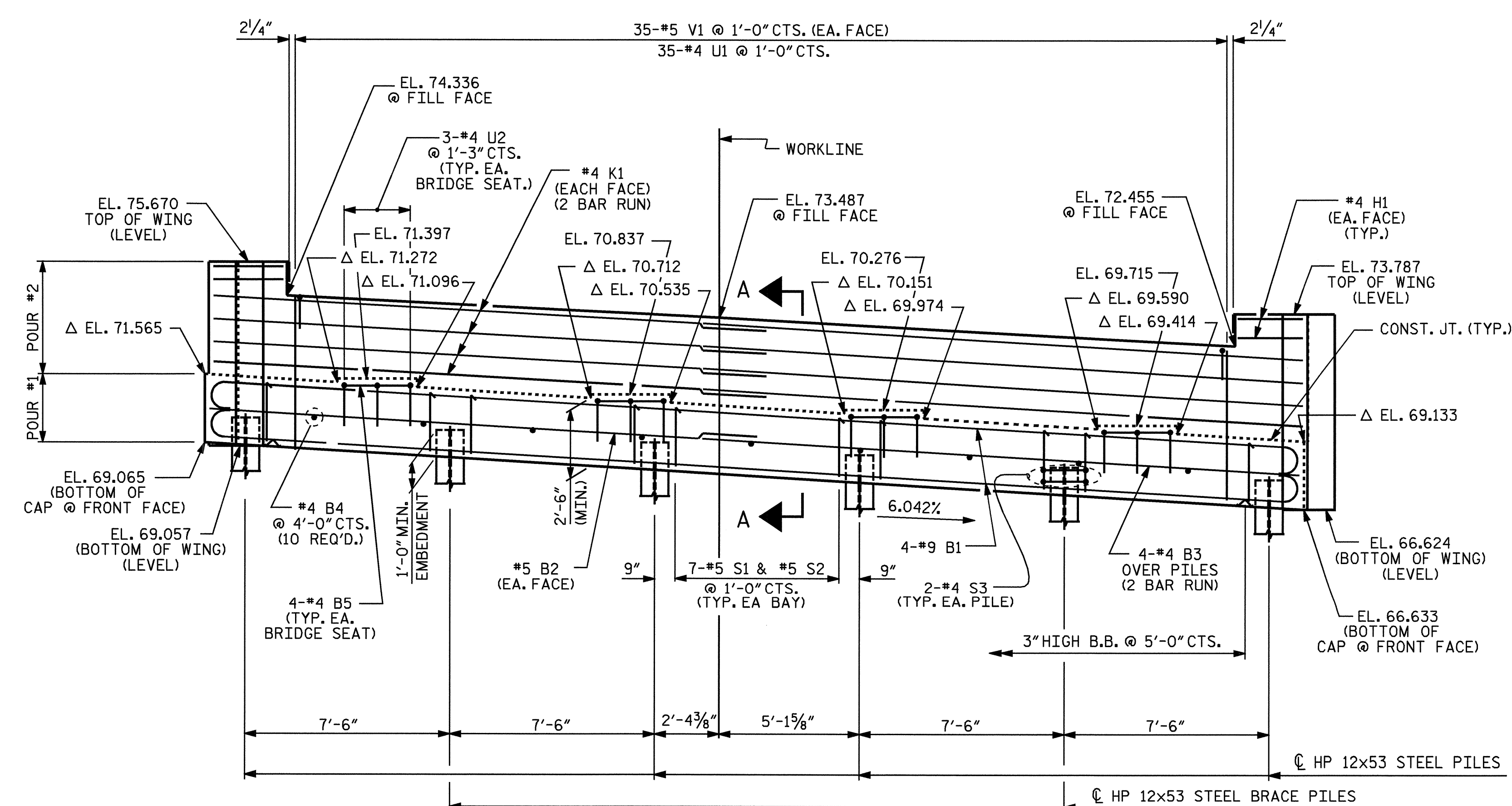
PLAN



DETAIL 'A'
(TYP. EA. GDR.)

SPLICE LENGTH CHART		
BAR	SIZE	SPLICE LENGTH
B3	#4	2'-5"
K1	#4	2'-5"

TOP OF PILE ELEVATIONS	
W1	70.058
1	70.006
2	69.553
3	69.100
4	68.647
5	68.194
6	67.740
W2	67.624



ELEVATION

(BRACE PILE IN WING NOT SHOWN IN ELEVATION FOR CLARITY)

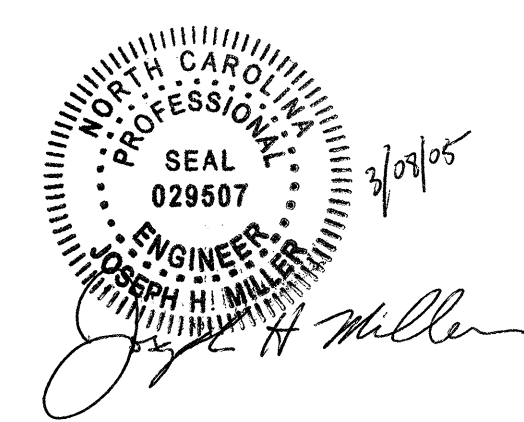
PROJECT NO. B-3467
HALIFAX COUNTY
 STATION: 20+75.00 -L-

SHEET 1 OF 2

STATE OF NORTH CAROLINA
 DEPARTMENT OF TRANSPORTATION
 RALEIGH

SUBSTRUCTURE
 END BENT 1

REVISIONS						SHEET NO.
NO.	BY:	DATE:	NO.	BY:	DATE:	S-17
1			3			TOTAL SHEETS
2			4			60



DRAWN BY: B.N.BARODAWALA DATE: 4-1-03
 CHECKED BY: J.H.MILLER DATE: 1-10-05