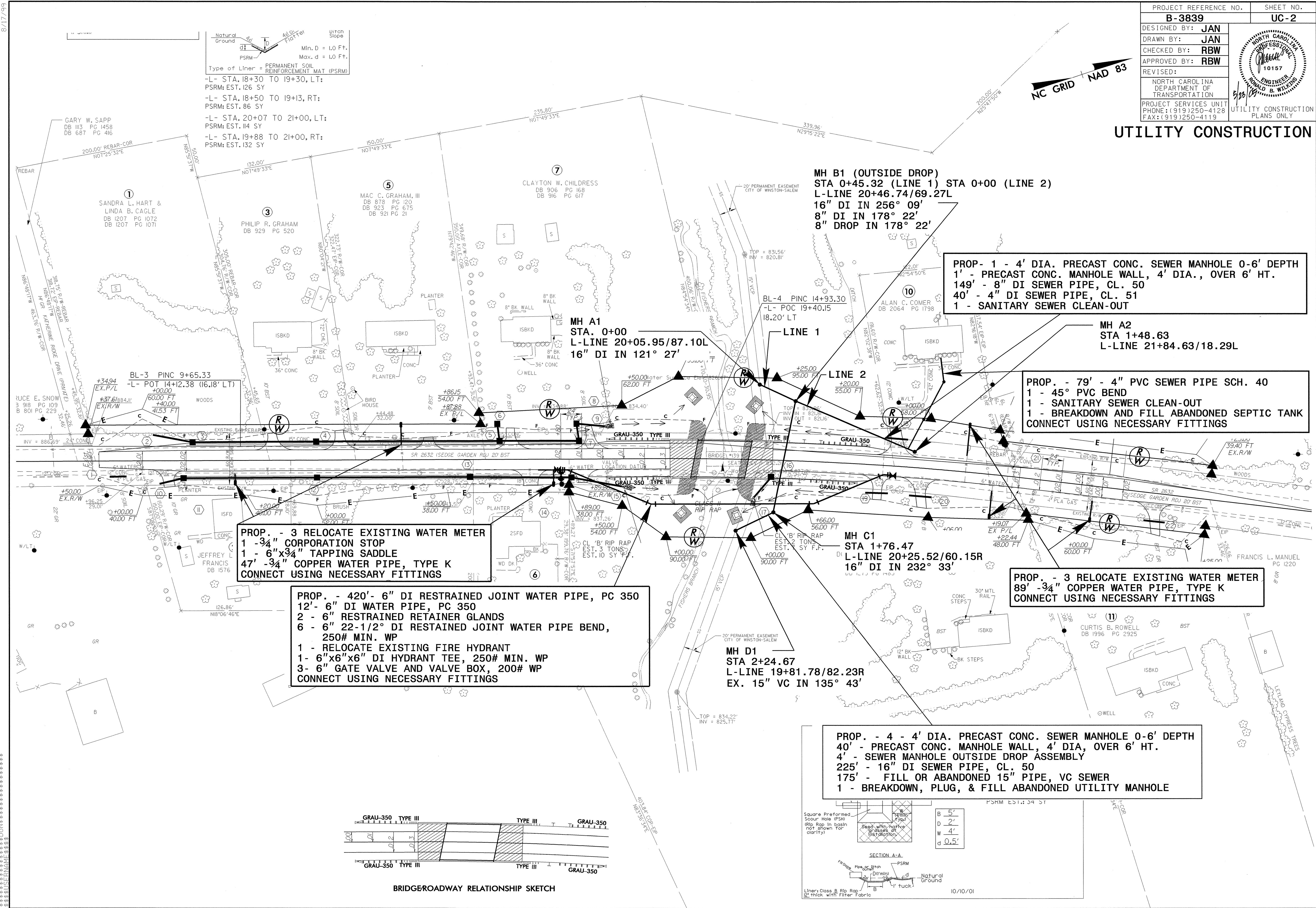
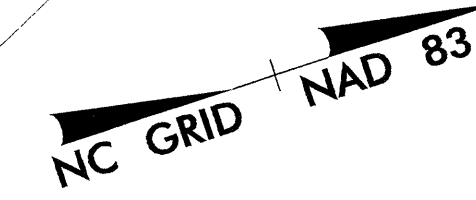


UTILITY CONSTRUCTION



MH B1 (OUTSIDE DROP)
 STA 0+45.32 (LINE 1) STA 0+00 (LINE 2)
 L-LINE 20+46.74/69.27L
 16" DI IN 256° 09'
 8" DI IN 178° 22'
 8" DROP IN 178° 22'

PROP. - 1 - 4' DIA. PRECAST CONC. SEWER MANHOLE 0-6' DEPTH
 1' - PRECAST CONC. MANHOLE WALL, 4' DIA., OVER 6' HT.
 149' - 8" DI SEWER PIPE, CL. 50
 40' - 4" DI SEWER PIPE, CL. 51
 1 - SANITARY SEWER CLEAN-OUT

MH A2
 STA 1+48.63
 L-LINE 21+84.63/18.29L

PROP. - 79' - 4" PVC SEWER PIPE SCH. 40
 1 - 45° PVC BEND
 1 - SANITARY SEWER CLEAN-OUT
 1 - BREAKDOWN AND FILL ABANDONED SEPTIC TANK
 CONNECT USING NECESSARY FITTINGS

PROP. - 3 RELOCATE EXISTING WATER METER
 1 - 3/4" CORPORATION STOP
 1 - 6"x3/4" TAPPING SADDLE
 47' - 3/4" COPPER WATER PIPE, TYPE K
 CONNECT USING NECESSARY FITTINGS

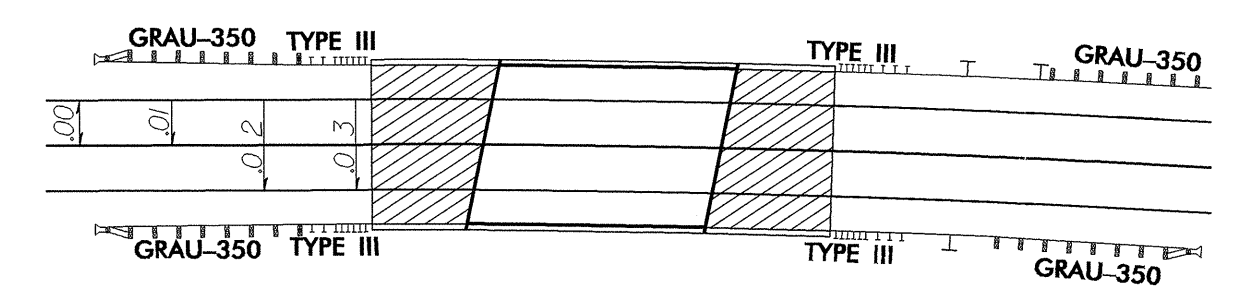
PROP. - 420' - 6" DI RESTRAINED JOINT WATER PIPE, PC 350
 12' - 6" DI WATER PIPE, PC 350
 2 - 6" RESTRAINED RETAINER GLANDS
 6 - 6" 22-1/2° DI RESTRAINED JOINT WATER PIPE BEND,
 250# MIN. WP
 1 - RELOCATE EXISTING FIRE HYDRANT
 1 - 6"x6"x6" DI HYDRANT TEE, 250# MIN. WP
 3 - 6" GATE VALVE AND VALVE BOX, 200# WP
 CONNECT USING NECESSARY FITTINGS

MH C1
 STA 1+76.47
 L-LINE 20+25.52/60.15R
 16" DI IN 232° 33'

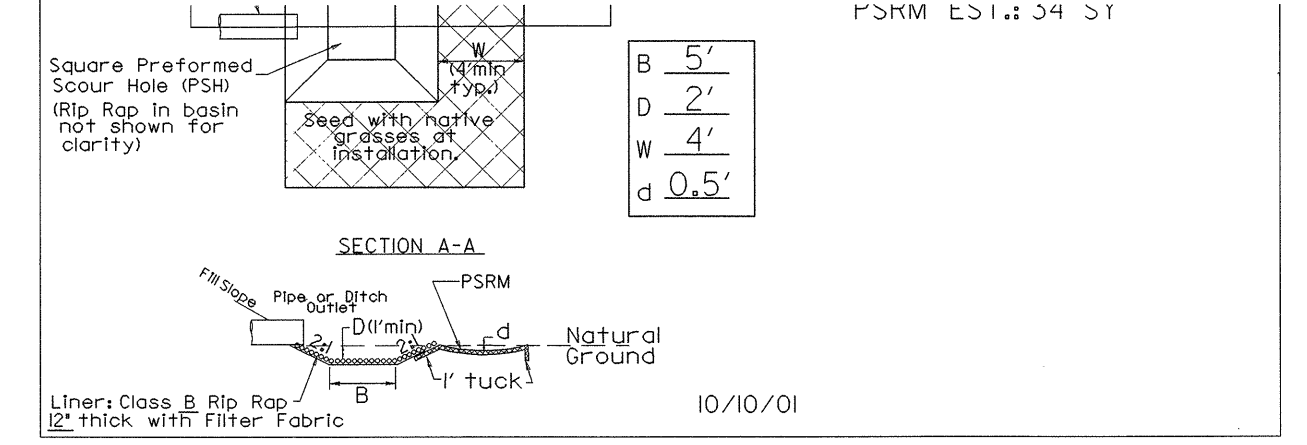
PROP. - 3 RELOCATE EXISTING WATER METER
 89' - 3/4" COPPER WATER PIPE, TYPE K
 CONNECT USING NECESSARY FITTINGS

MH D1
 STA 2+24.67
 L-LINE 19+81.78/82.23R
 EX. 15" VC IN 135° 43'

PROP. - 4 - 4' DIA. PRECAST CONC. SEWER MANHOLE 0-6' DEPTH
 40' - PRECAST CONC. MANHOLE WALL, 4' DIA, OVER 6' HT.
 4' - SEWER MANHOLE OUTSIDE DROP ASSEMBLY
 225' - 16" DI SEWER PIPE, CL. 50
 175' - FILL OR ABANDONED 15" PIPE, VC SEWER
 1 - BREAKDOWN, PLUG, & FILL ABANDONED UTILITY MANHOLE



BRIDGE/ROADWAY RELATIONSHIP SKETCH



10/10/01

8/17/99
 PS212416 Thursday, May 19, 2005 8:38:39 AM UC2 PSH inigro ds-dboce34