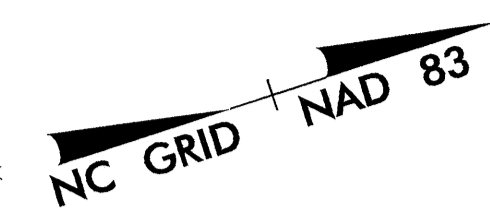
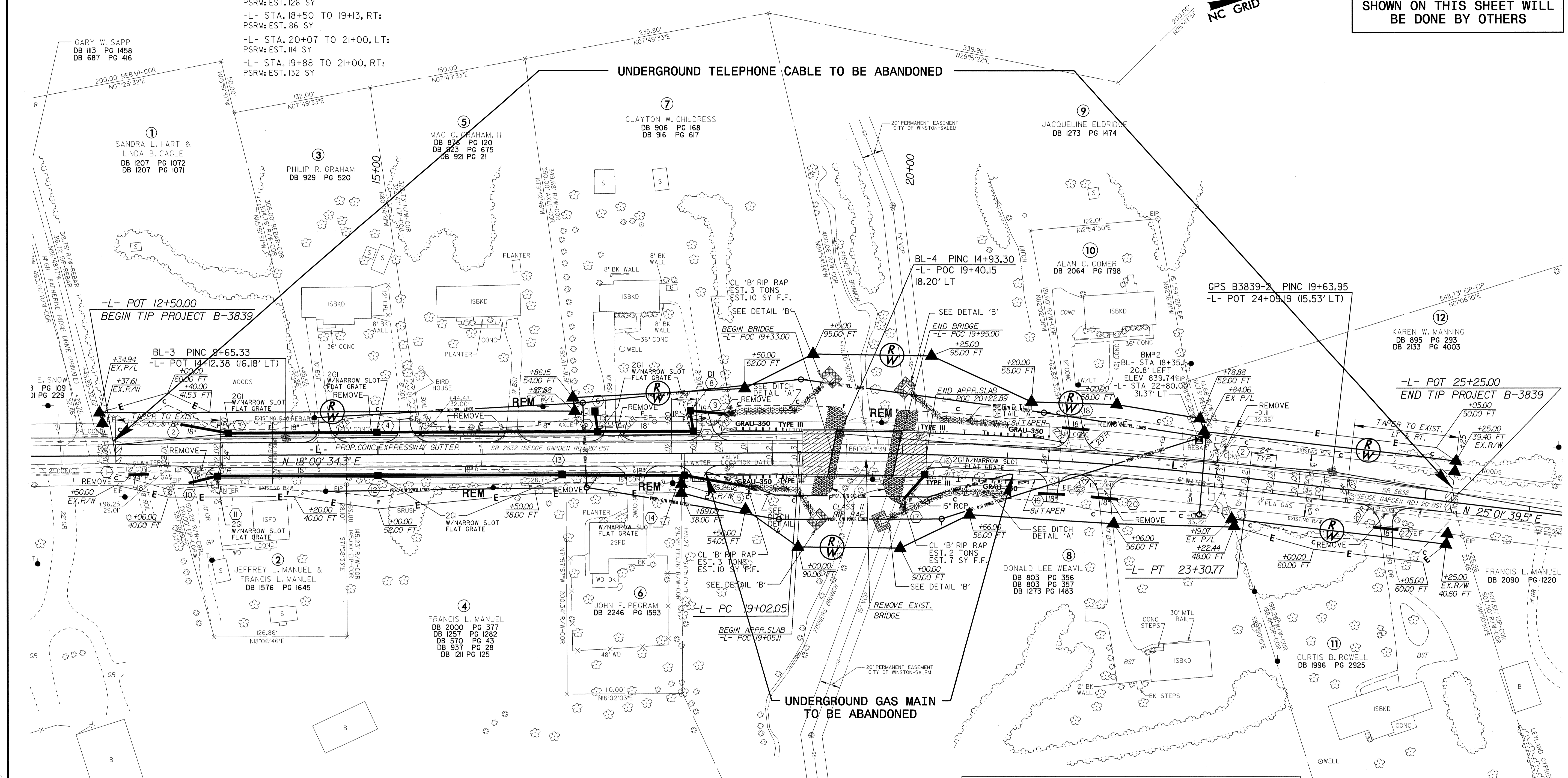


UTILITIES BY OTHERS

NOTE:  
ALL PROPOSED UTILITY WORK  
SHOWN ON THIS SHEET WILL  
BE DONE BY OTHERS



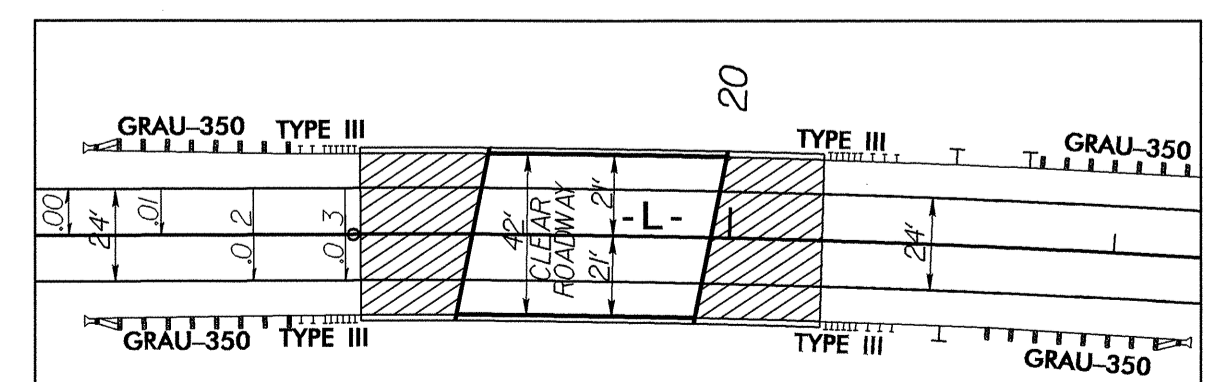
Ground  $\frac{1}{4}$ " = 10' Flo. Min. D = 1.0 Ft. Max. d = 1.0 Ft.  
Type of Liner = PERMANENT SOIL REINFORCEMENT MAT (PSRM)  
-L- STA. 18+30 TO 19+30, LT: PSRM: EST. 126 SY  
-L- STA. 18+50 TO 19+13, RT: PSRM: EST. 86 SY  
-L- STA. 20+07 TO 21+00, LT: PSRM: EST. 114 SY  
-L- STA. 19+88 TO 21+00, RT: PSRM: EST. 132 SY



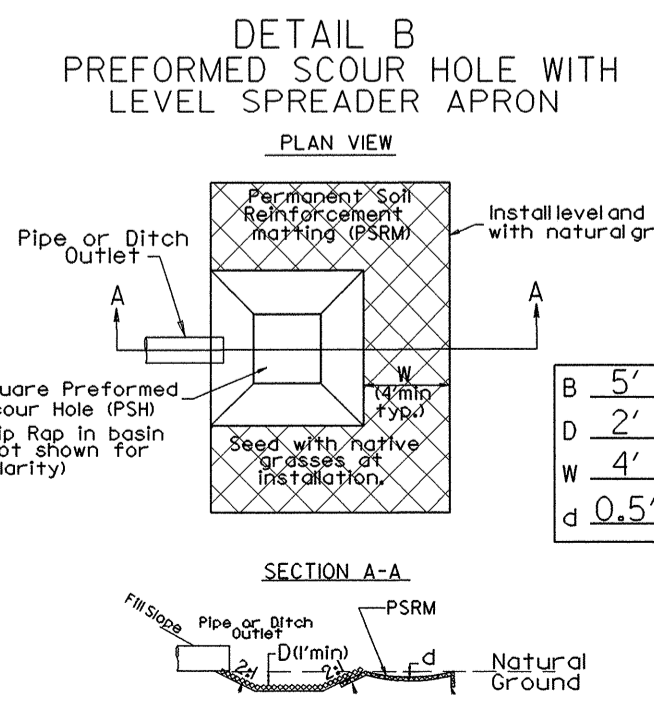
DATUM DESCRIPTION

THE LOCALIZED COORDINATE SYSTEM DEVELOPED FOR THIS PROJECT IS BASED ON THE STATE PLANE COORDINATES ESTABLISHED BY NCDOT FOR MONUMENT "B3839-1" WITH NAD 83 STATE PLANE GRID COORDINATES OF NORTHING: 8582450.16(11) EASTING: 1663411.152(11) THE AVERAGE COMBINED GRID FACTOR USED ON THIS PROJECT (GROUND TO GRID) IS: 0.99994447 THE N.C. LAMBERT GRID BEARING AND LOCALIZED HORIZONTAL GROUND DISTANCE FROM

SEE SHEETS S-1 THRU S- FOR STRUCTURES PLANS



-L- Curve \*1  
PI Sta 21+16.68  
 $\Delta = 7' 01" 05.1" (RT)$   
 $D = 1' 38" 13.3"$   
 $L = 428.71'$   
 $T = 214.62'$   
 $R = 3,500.00'$   
 $e = 0.03$



-L- STA. 19+20, RT  
-L- STA. 19+33, LT  
-L- STA. 19+80, RT  
-L- STA. 20+00, LT  
CL 'B' RIP RAP: EST. 10 TONS  
FILTER FABRIC: EST. 28 SY  
PSRM EST.: 34 SY

04-APR-2005 10:02 AM R:\Users\psh\psh\B3839-UT\_4\_UO1\_PSH.dgn