

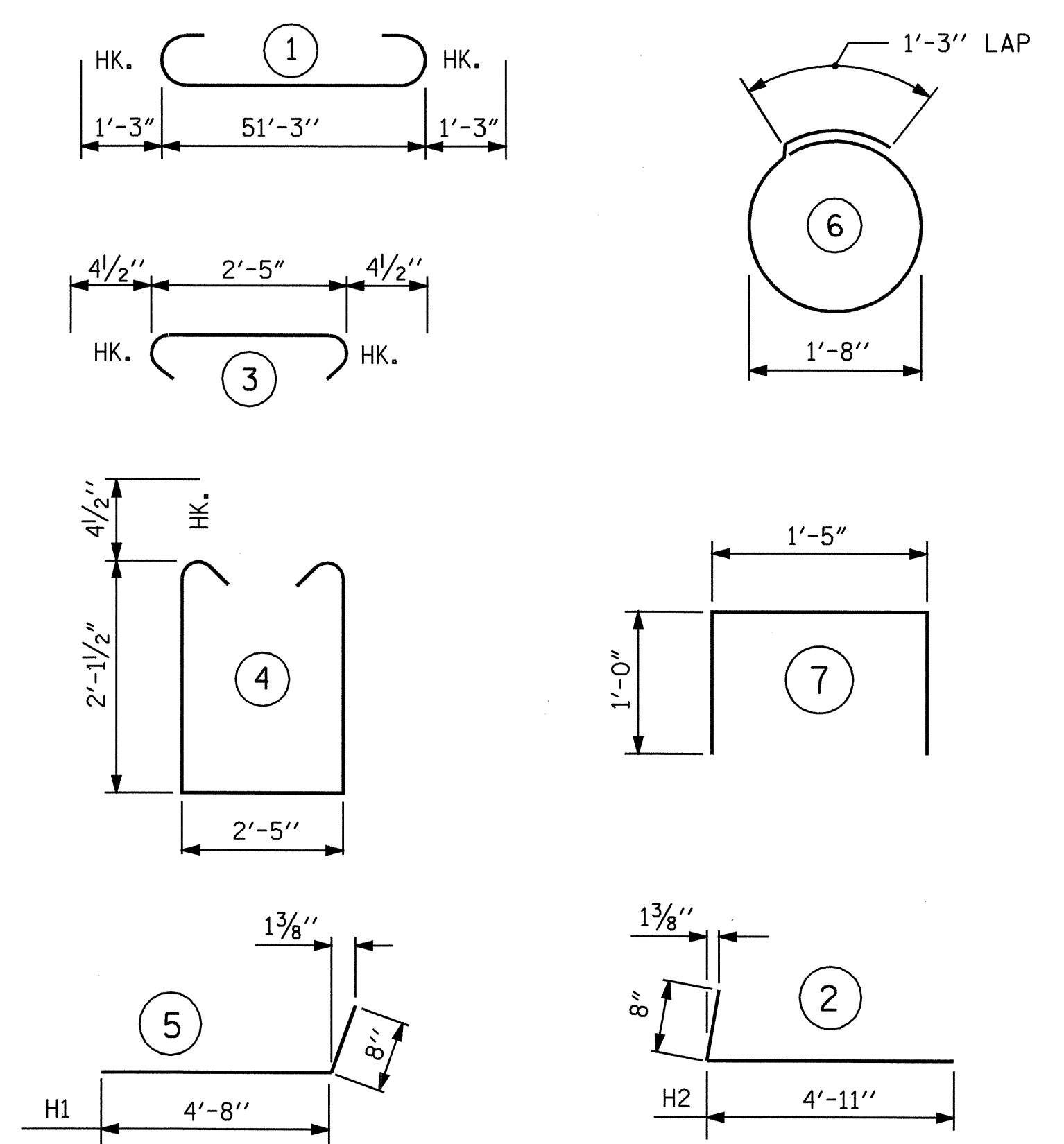
BAGGED STONE AND PIPE SHALL BE PLACED IMMEDIATELY AFTER COMPLETION OF END BENT EXCAVATION. PIPE MAY BE EITHER CONCRETE, CORRUGATED STEEL, CORRUGATED ALUMINUM ALLOY, OR CORRUGATED PLASTIC. PERFORATED PIPE WILL NOT BE ALLOWED.

BAGGED STONE SHALL REMAIN IN PLACE UNTIL THE ENGINEER DIRECTS THAT IT BE REMOVED. THE CONTRACTOR SHALL REMOVE AND DISPOSE OF SILT ACCUMULATIONS AT BAGGED STONE WHEN SO DIRECTED BY THE ENGINEER. BAGS SHALL BE REMOVED AND REPLACED WHENEVER THE ENGINEER DETERMINES THAT THEY HAVE DETERIORATED AND LOST THEIR EFFECTIVENESS.

NO SEPARATE PAYMENT WILL BE MADE FOR THIS WORK AND THE ENTIRE COST OF THIS WORK SHALL BE INCLUDED IN THE UNIT CONTRACT PRICE BID FOR THE SEVERAL PAY ITEMS.

TEMPORARY DRAINAGE AT END BENT

BAR TYPES

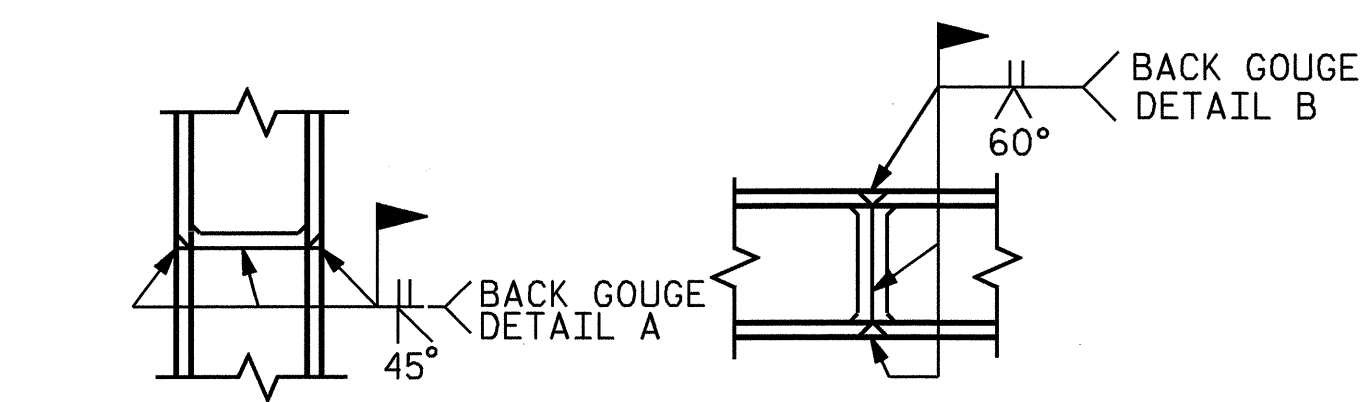


ALL BAR DIMENSIONS ARE OUT TO OUT.

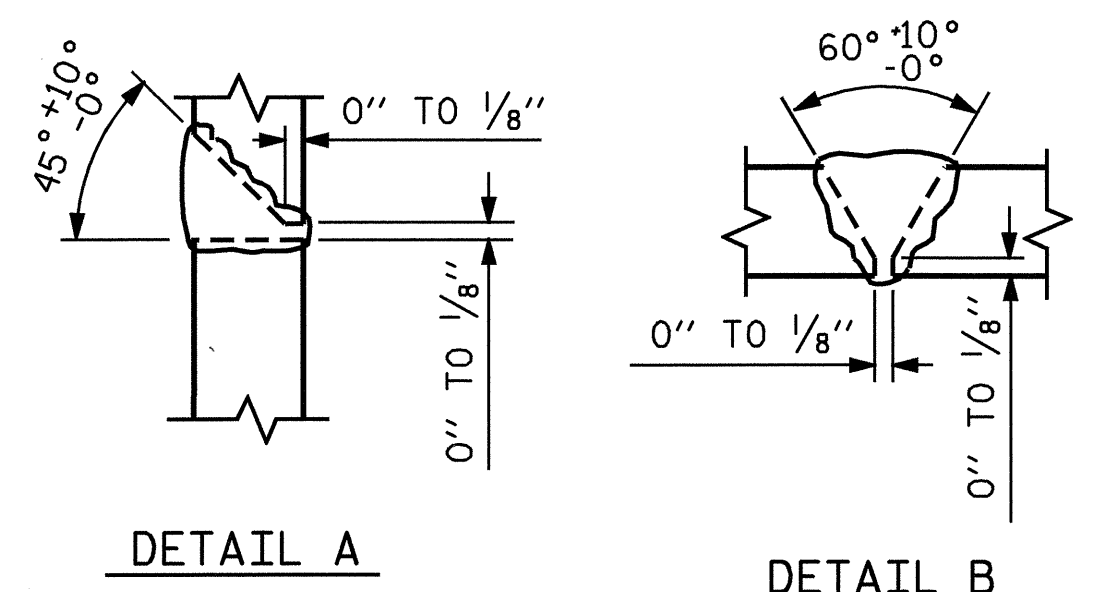
**BILL OF MATERIAL
END BENT No. 2**

BAR	NO.	SIZE	TYPE	LENGTH	WEIGHT
B1	8	9	1	53'-9"	1462
B2	12	4	STR	26'-11"	216
B3	12	4	STR	2'-5"	19
D1	30	6	STR	1'-6"	68
H1	12	4	5	5'-4"	43
H2	12	4	2	5'-7"	45
H3	8	4	STR	2'-6"	13
S1	47	4	4	7'-5"	233
S2	47	4	3	3'-2"	99
S3	20	4	6	6'-6"	87
S4	4	4	7	3'-5"	9
V1	16	4	STR	4'-2"	45
V2	16	4	STR	4'-6"	48

REINFORCING STEEL	2387 LBS
CLASS A CONCRETE BREAKDOWN :	
POUR #1 (CAP & LOWER WINGS)	14.0 C.Y.
POUR #2 (UPPER WINGS)	1.2 C.Y.
POUR #3 (LATERAL GUIDES)	0.1 C.Y.
TOTAL	15.3 C.Y.
HP 12 X 53 STEEL PILES	
NO. 10	250 LIN. FEET



* PILE VERTICAL * PILE HORIZONTAL OR VERTICAL



* POSITION OF PILE DURING WELDING.

PILE SPLICE DETAILS

PROJECT NO. B-3839
 FORSYTH COUNTY
 STATION: 19+64.00 -L-
 SHEET 3 OF 3

STATE OF NORTH CAROLINA
 DEPARTMENT OF TRANSPORTATION
 RALEIGH

**SUBSTRUCTURE
 END BENT No. 2**



REVISIONS						SHEET NO.
NO.	BY:	DATE:	NO.	BY:	DATE:	S-12
1			3			TOTAL SHEETS
2			4			16