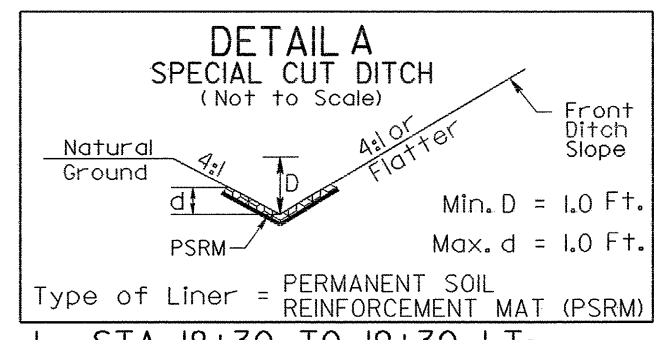


PROJECT REFERENCE NO.	SHEET NO.
B-3839	EC-3/CONST.4
RW SHEET NO.	
ROADWAY DESIGN ENGINEER	HYDRAULICS ENGINEER

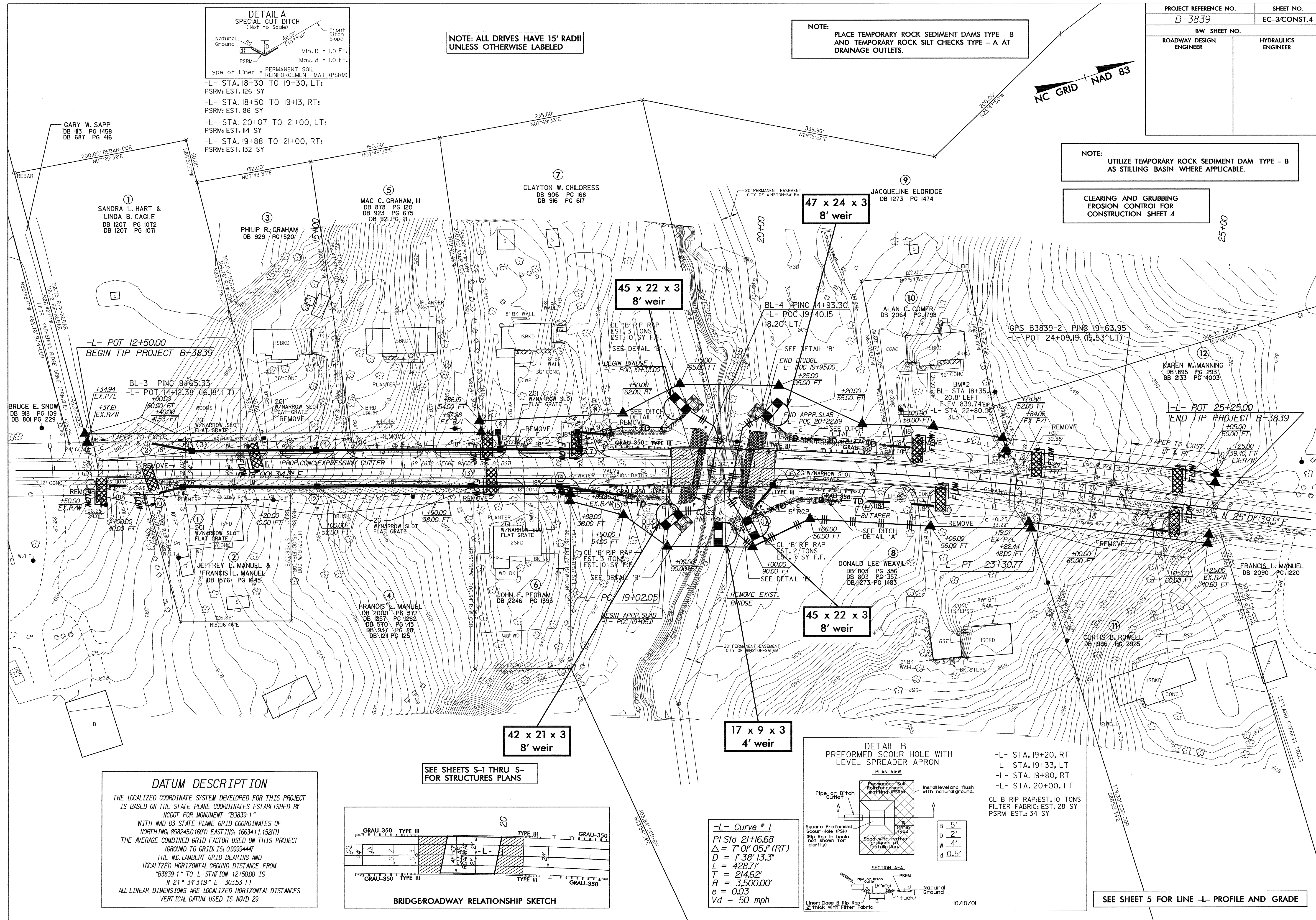


NOTE: ALL DRIVES HAVE 15' RADII UNLESS OTHERWISE LABELED

NOTE: PLACE TEMPORARY ROCK SEDIMENT DAMS TYPE - B AND TEMPORARY ROCK SILT CHECKS TYPE - A AT DRAINAGE OUTLETS.

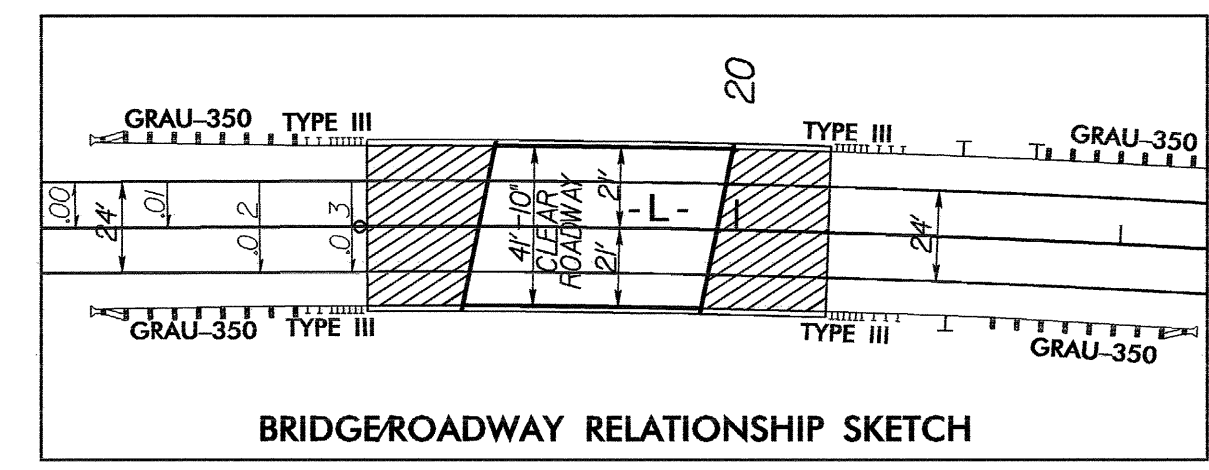
NOTE: UTILIZE TEMPORARY ROCK SEDIMENT DAM TYPE - B AS STILLING BASIN WHERE APPLICABLE.

CLEARING AND GRUBBING EROSION CONTROL FOR CONSTRUCTION SHEET 4

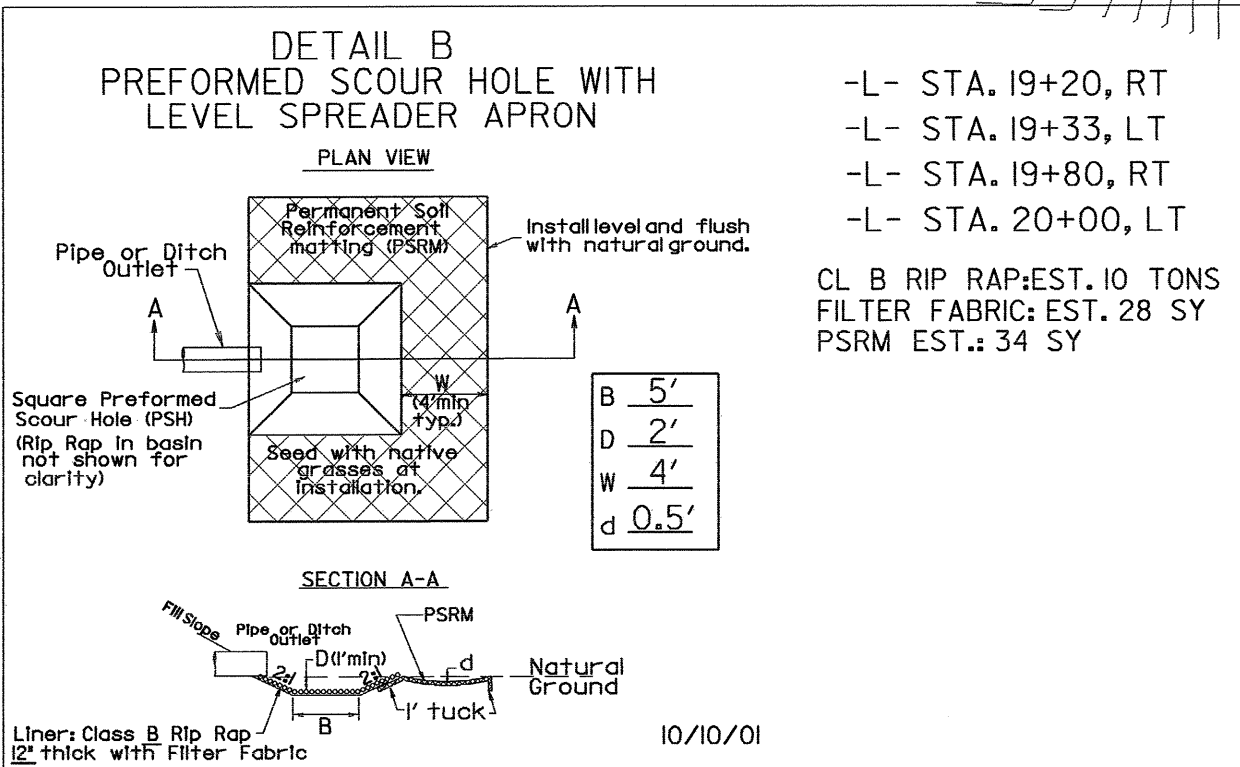


DATUM DESCRIPTION
 THE LOCALIZED COORDINATE SYSTEM DEVELOPED FOR THIS PROJECT IS BASED ON THE STATE PLANE COORDINATES ESTABLISHED BY NCDOT FOR MONUMENT "B3839-1" WITH NAD 83 STATE PLANE GRID COORDINATES OF NORTHING: 8582450.16(11) EASTING: 1663411.152(11) THE AVERAGE COMBINED GRID FACTOR USED ON THIS PROJECT (GROUND TO GRID) IS: 0.99994447 THE N.C. LAMBERT GRID BEARING AND LOCALIZED HORIZONTAL GROUND DISTANCE FROM "B3839-1" TO L- STATION 12+50.00 IS N 21° 34' 31.9" E 303.53 FT ALL LINEAR DIMENSIONS ARE LOCALIZED HORIZONTAL DISTANCES VERTICAL DATUM USED IS NGVD 29

SEE SHEETS S-1 THRU S- FOR STRUCTURES PLANS



-L- Curve * 1
 PI Sta 21+16.68
 $\Delta = 7^{\circ} 01' 05.1''$ (RT)
 $D = 1^{\circ} 38' 13.3''$
 $L = 428.71'$
 $T = 214.62'$
 $R = 3,500.00'$
 $e = 0.03$
 $V_d = 50$ mph



SEE SHEET 5 FOR LINE -L- PROFILE AND GRADE