

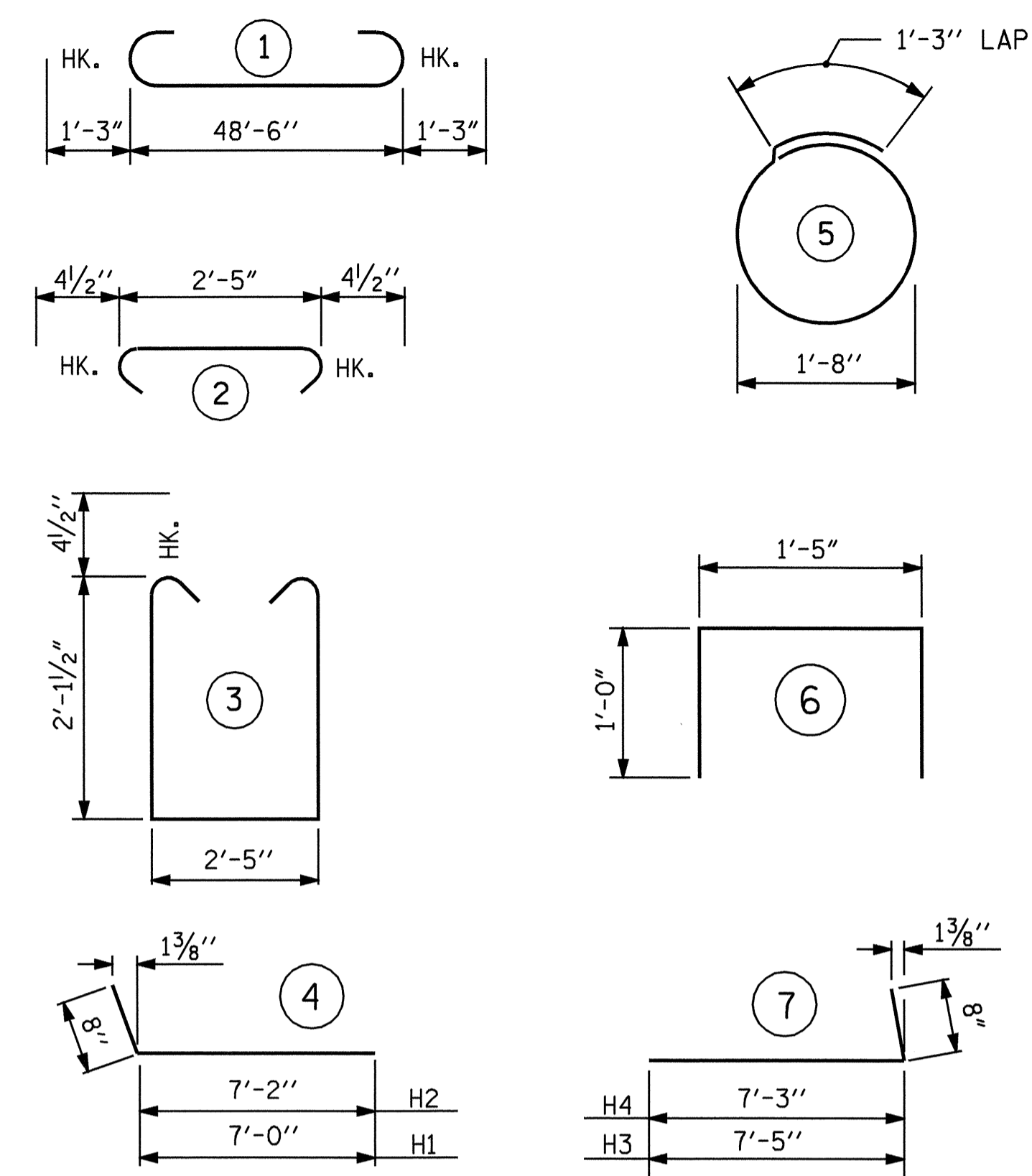
BAGGED STONE AND PIPE SHALL BE PLACED IMMEDIATELY AFTER COMPLETION OF END BENT EXCAVATION. PIPE MAY BE EITHER CONCRETE, CORRUGATED STEEL, CORRUGATED ALUMINUM ALLOY, OR CORRUGATED PLASTIC. PERFORATED PIPE WILL NOT BE ALLOWED.

BAGGED STONE SHALL REMAIN IN PLACE UNTIL THE ENGINEER DIRECTS THAT IT BE REMOVED. THE CONTRACTOR SHALL REMOVE AND DISPOSE OF SILT ACCUMULATIONS AT BAGGED STONE WHEN SO DIRECTED BY THE ENGINEER. BAGS SHALL BE REMOVED AND REPLACED WHENEVER THE ENGINEER DETERMINES THAT THEY HAVE DETERIORATED AND LOST THEIR EFFECTIVENESS.

NO SEPARATE PAYMENT WILL BE MADE FOR THIS WORK AND THE ENTIRE COST OF THIS WORK SHALL BE INCLUDED IN THE UNIT CONTRACT PRICE BID FOR THE SEVERAL PAY ITEMS.

TEMPORARY DRAINAGE AT END BENT

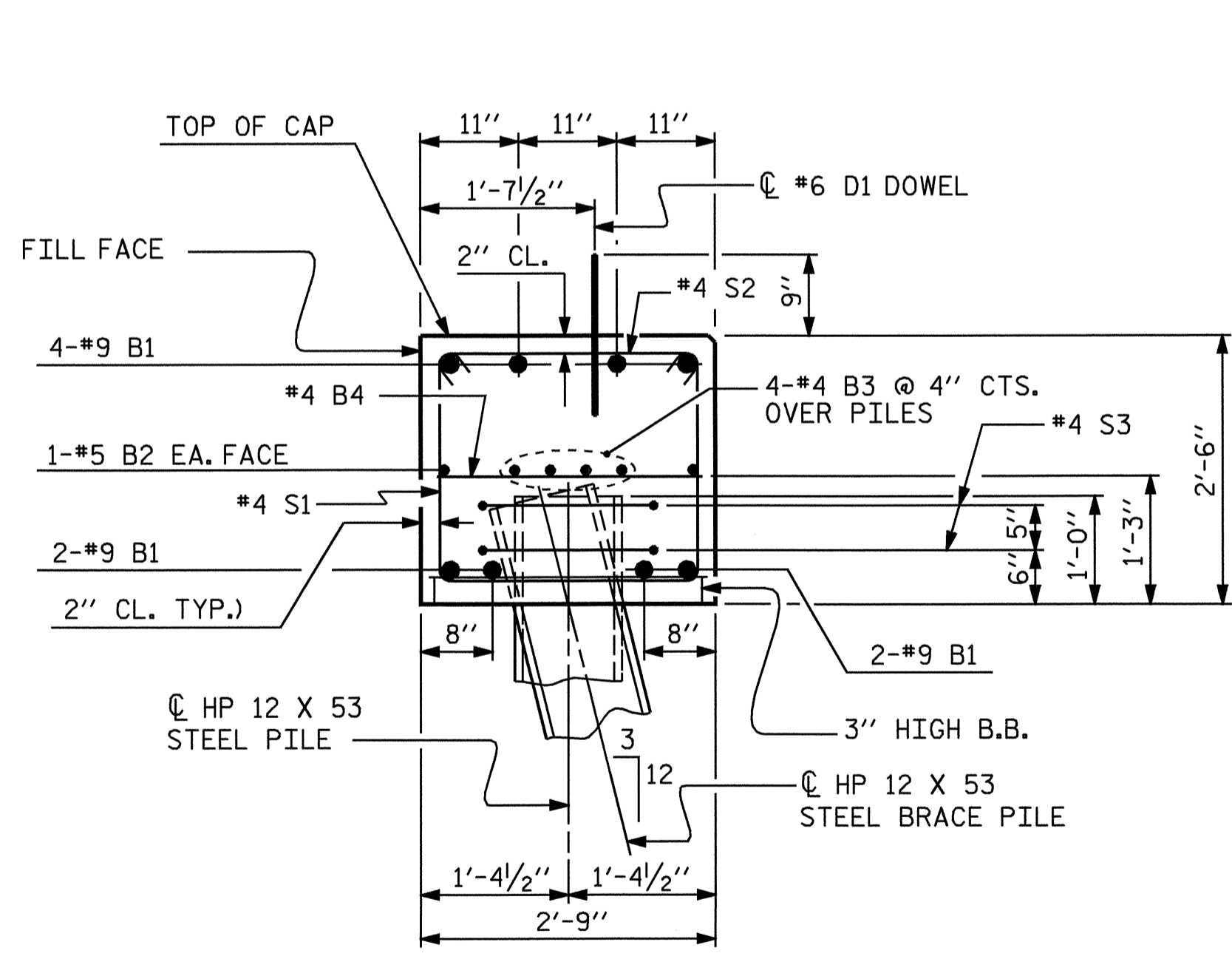
BAR TYPES



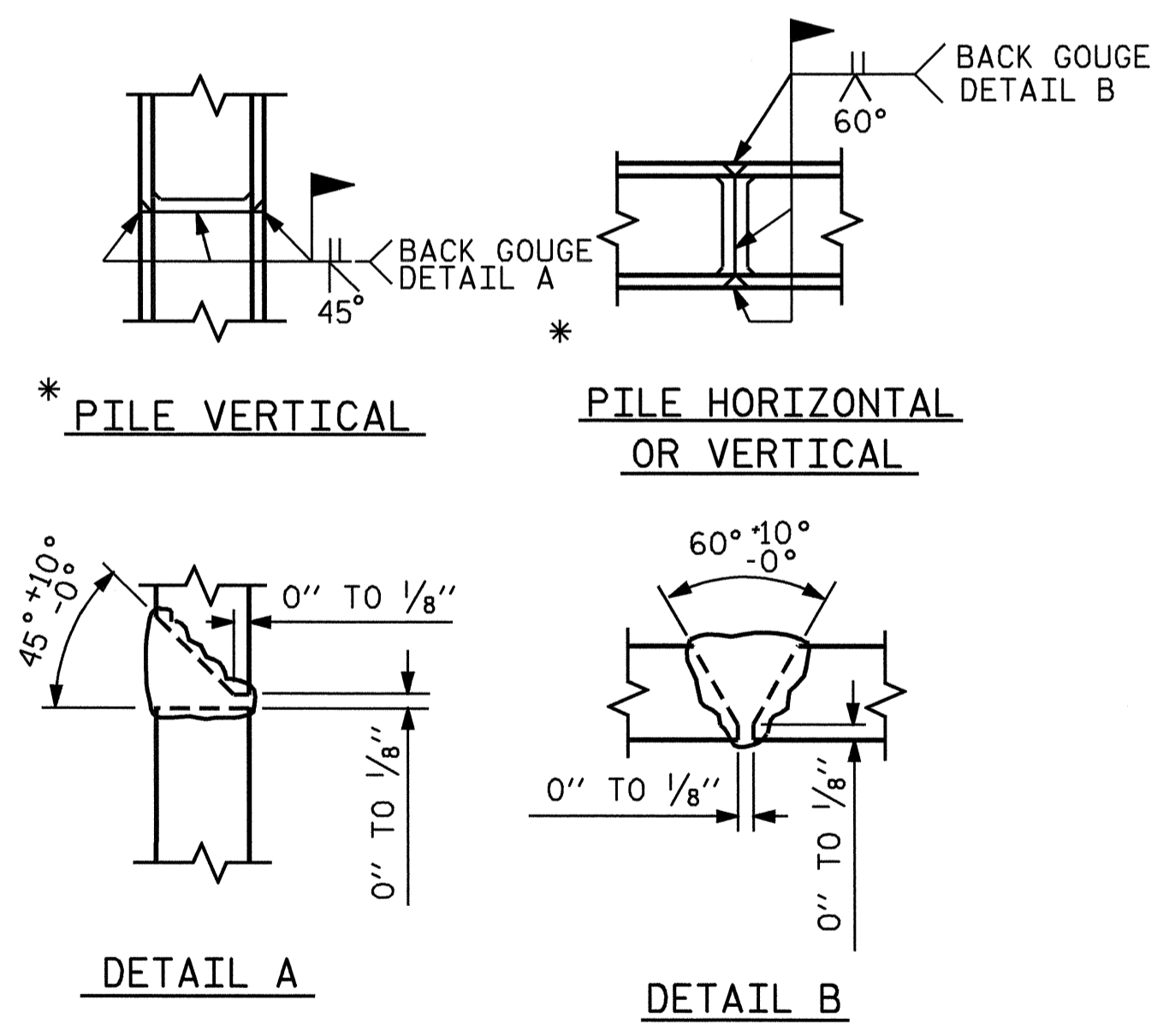
ALL BAR DIMENSIONS ARE OUT TO OUT.

BILL OF MATERIAL

END BENT 1					
BAR	NO.	SIZE	TYPE	LENGTH	WEIGHT
B1	8	9	1	51'-0"	1387
B2	2	5	STR	48'-6"	101
B3	8	4	STR	25'-6"	136
B4	12	4	STR	2'-5"	19
D1	28	6	STR	1'-6"	63
H1	5	4	4	7'-8"	26
H2	5	4	4	7'-10"	26
H3	6	4	7	8'-1"	32
H4	6	4	7	7'-11"	32
H5	10	4	STR	2'-7"	17
S1	44	4	3	7'-5"	218
S2	44	4	2	3'-2"	93
S3	16	4	5	6'-6"	69
S4	4	4	6	3'-5"	9
V1	22	4	STR	4'-2"	61
V2	22	4	STR	4'-5"	65
REINFORCING STEEL				2354	LBS
CLASS A CONCRETE BREAKDOWN :					
POUR #1 (CAP & LOWER WINGS)				13.6	C.Y.
POUR #2 (UPPER WINGS)				1.5	C.Y.
POUR #3 (LATERAL GUIDES)				0.1	C.Y.
TOTAL				15.2	C.Y.
HP 12 X 53 STEEL PILES					
NO. 8				200	LIN. FEET



SECTION THRU CAP



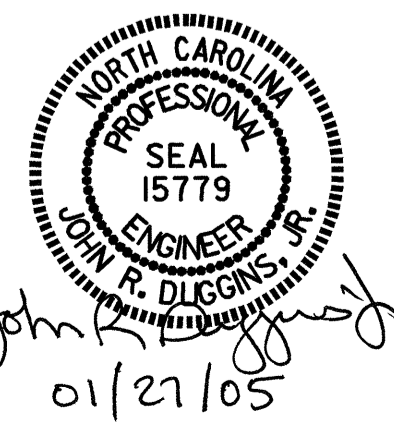
PILE SPLICE DETAILS

PROJECT NO. B-3887
PENDER COUNTY
 STATION: 15+64.50 -L-

SHEET 3 OF 3

STATE OF NORTH CAROLINA
 DEPARTMENT OF TRANSPORTATION
 RALEIGH

**SUBSTRUCTURE
 END BENT 1**



REVISIONS				SHEET NO.
DATE	NO.	BY	DATE	S-12
	3			TOTAL SHEETS
	4			23