

NOTES

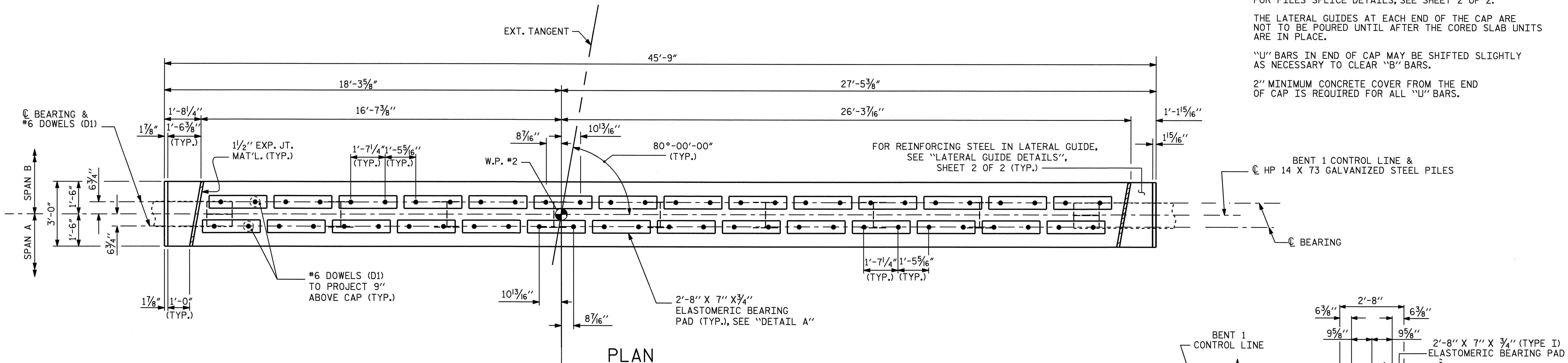
STIRRUPS IN CAP MAY BE SHIFTED AS NECESSARY TO CLEAR #6 DOWELS.

FOR PILES SPLICE DETAILS, SEE SHEET 2 OF 2.

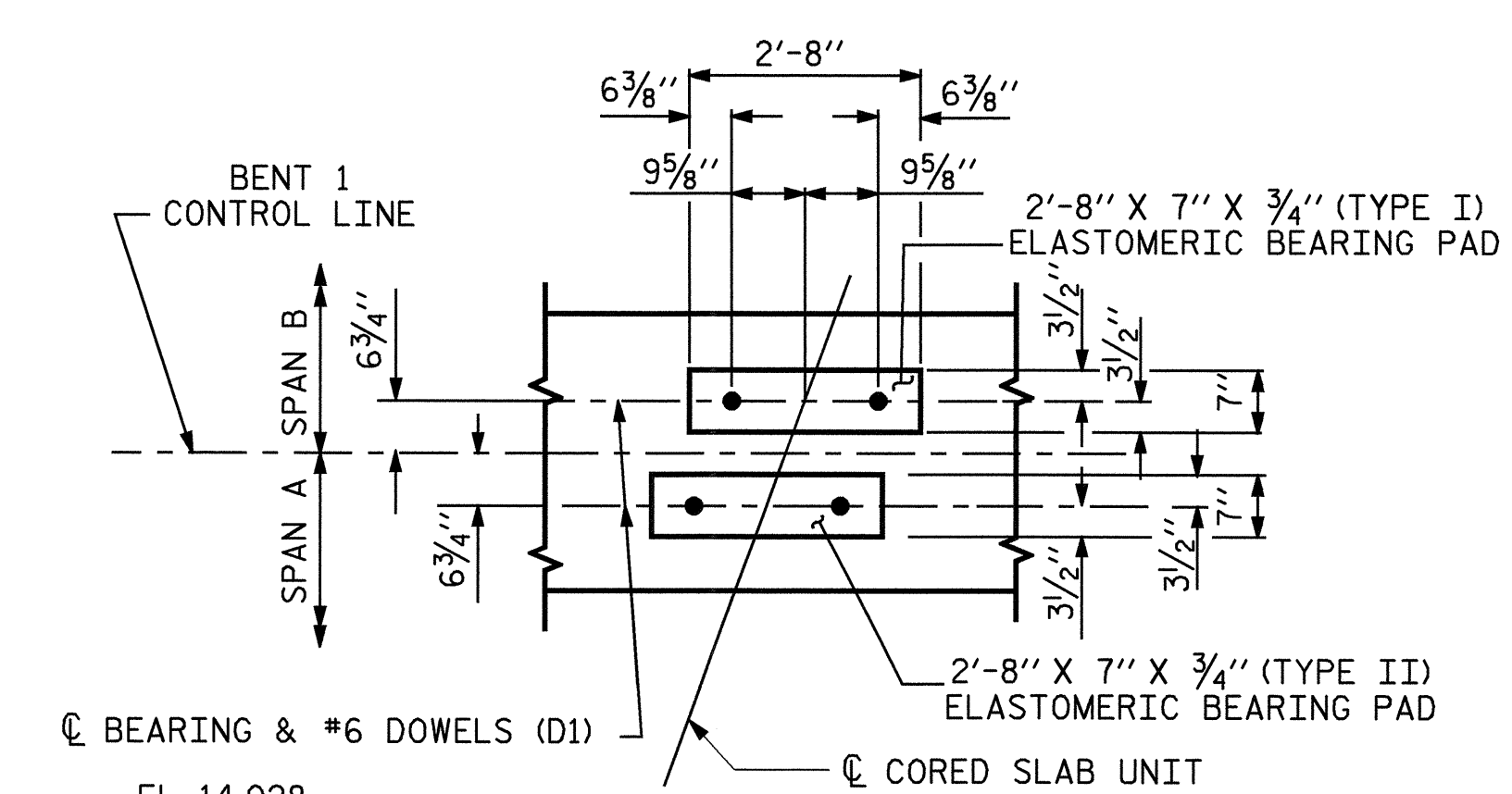
THE LATERAL GUIDES AT EACH END OF THE CAP ARE NOT TO BE POURED UNTIL AFTER THE CORED SLAB UNITS ARE IN PLACE.

"U" BARS IN END OF CAP MAY BE SHIFTED SLIGHTLY AS NECESSARY TO CLEAR "B" BARS.

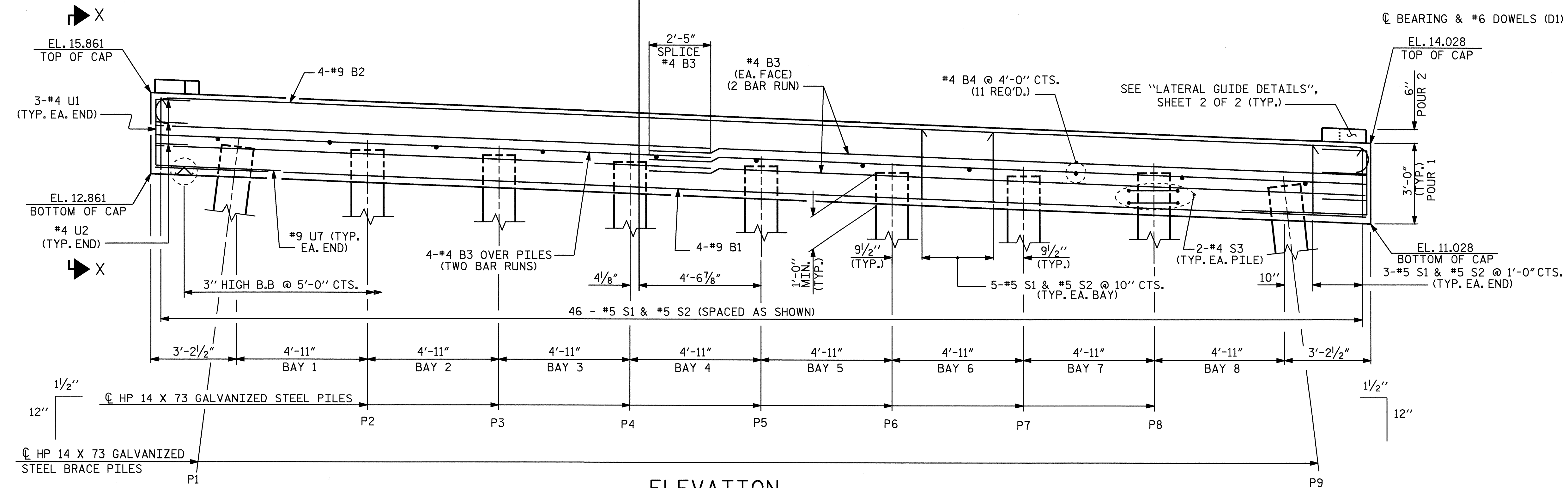
2" MINIMUM CONCRETE COVER FROM THE END OF CAP IS REQUIRED FOR ALL "U" BARS.



PLAN



DETAIL A



ELEVATION

TOP OF PILE ELEVATION CHART

| P1 | P2 | P3 | P4 | P5 | P6 | P7 | P8 | P9 |
|--------|--------|--------|--------|--------|--------|--------|--------|--------|
| 13.756 | 13.559 | 13.362 | 13.165 | 12.968 | 12.771 | 12.574 | 12.377 | 12.180 |

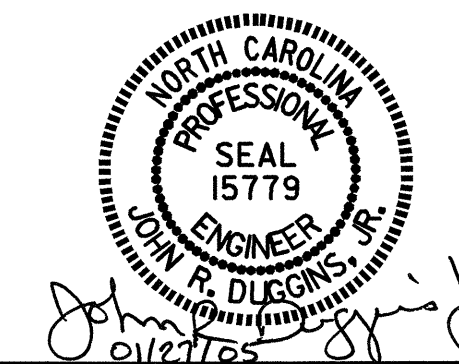
PROJECT NO. B-3887
 PENDER COUNTY
 STATION: 15+64.50 -L-

SHEET 1 OF 2

STATE OF NORTH CAROLINA
 DEPARTMENT OF TRANSPORTATION
 RALEIGH

SUBSTRUCTURE BENT 1

| REVISIONS | | | | | | SHEET NO. | |
|-----------|-----|-------|-----|-----|-------|-----------------|--|
| NO. | BY: | DATE: | NO. | BY: | DATE: | S-13 | |
| 1 | | | 3 | | | TOTAL SHEETS 23 | |
| 2 | | | 4 | | | | |



DRAWN BY: M. POOLE DATE: 04/04
 CHECKED BY: J. LAMBERT DATE: 05/04