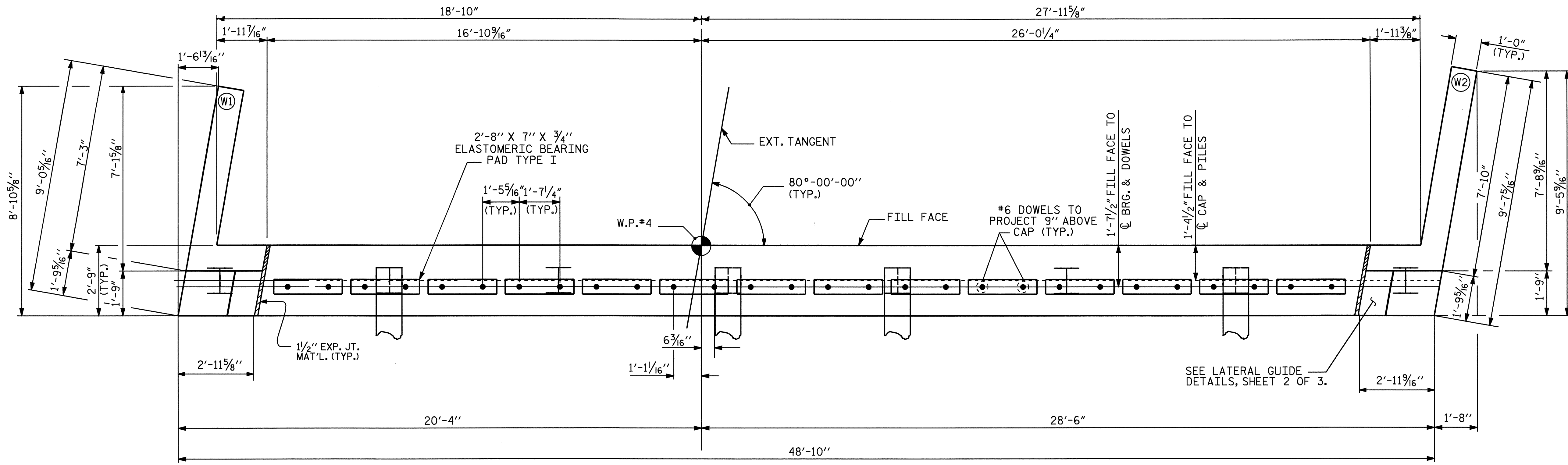


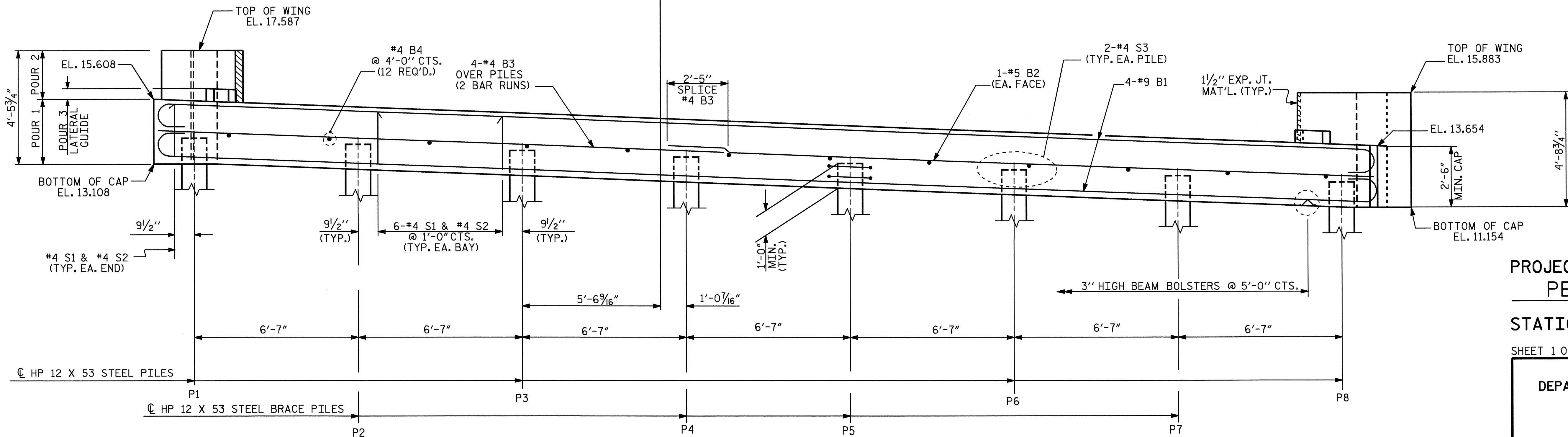
NOTES

STIRRUPS IN CAP MAY BE SHIFTED AS NECESSARY TO CLEAR #6 DOWELS.
 THE LATERAL GUIDE AT EACH END OF THE CAP IS NOT TO BE POURED UNTIL AFTER THE CORED SLAB UNITS ARE IN PLACE.
 FOR PILE SPLICE DETAILS, SEE SHEET 3 OF 3.
 THE CONTRACTOR SHALL PROVIDE FOR INSTALLATION OF THE 4" DIAMETER DRAIN PIPE THROUGH THE WING WALL AS REQUIRED FOR REINFORCED BRIDGE APPROACH FILLS, SEE THE ROADWAY PLANS. REINFORCING STEEL IN THE WING WALL MAY BE SHIFTED AS NECESSARY TO CLEAR THE DRAIN PIPE.



PLAN

WORKLINE



ELEVATION

TOP OF PILE ELEVATION CHART

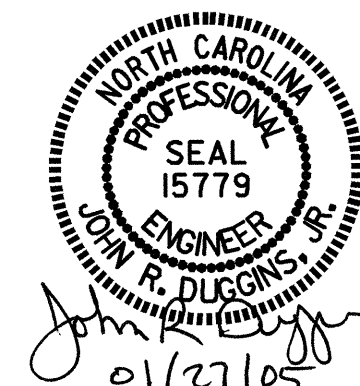
P1	P2	P3	P4	P5	P6	P7	P8
14.072	13.809	13.546	13.282	13.019	12.756	12.492	12.229

PROJECT NO. B-3887
 PENDER COUNTY
 STATION: 15+64.50 -L-

SHEET 1 OF 3

STATE OF NORTH CAROLINA
 DEPARTMENT OF TRANSPORTATION
 RALEIGH

**SUBSTRUCTURE
 END BENT 2**



REVISIONS						SHEET NO.
NO.	BY:	DATE:	NO.	BY:	DATE:	S-17
1			3			TOTAL SHEETS 23
2			4			

DRAWN BY: M. POOLE DATE: 04/04
 CHECKED BY: J. LAMBERT DATE: 04/04