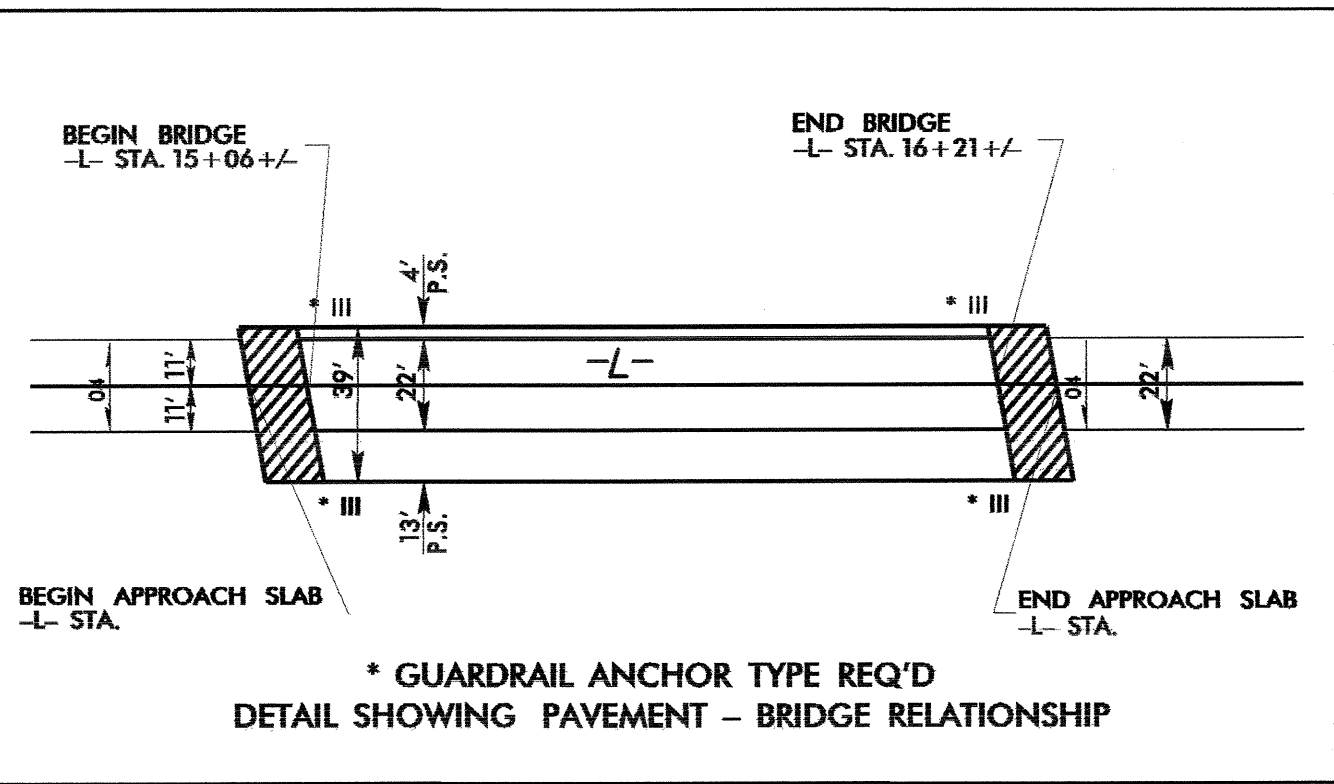


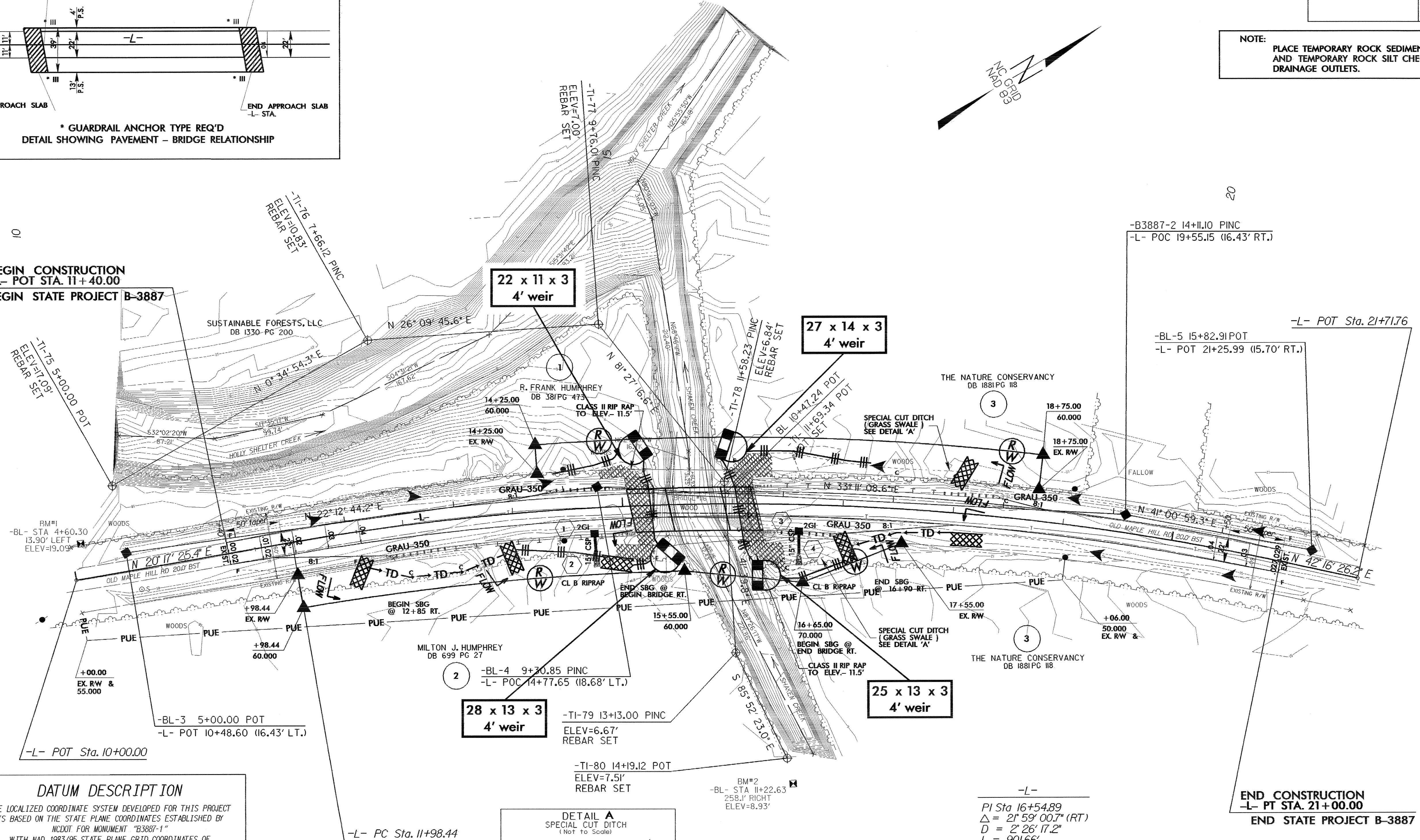
NOTE:
UTILIZE TEMPORARY ROCK SEDIMENT DAM TYPE - B
AS STILLING BASIN WHERE APPLICABLE.

PROJECT REFERENCE NO. B-3887		SHEET NO. EC-3/CONST.4	
RW SHEET NO.			
ROADWAY DESIGN ENGINEER		HYDRAULICS ENGINEER	

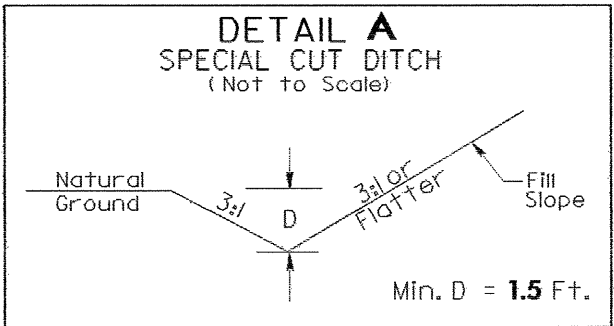
NOTE:
PLACE TEMPORARY ROCK SEDIMENT DAMS TYPE - B
AND TEMPORARY ROCK SILT CHECKS TYPE - A AT
DRAINAGE OUTLETS.



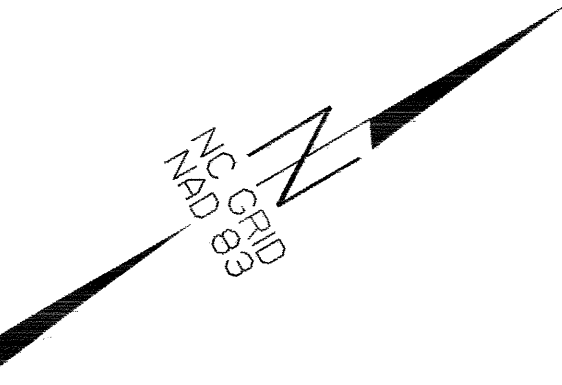
BEGIN CONSTRUCTION
-L- POT STA. 11+40.00
BEGIN STATE PROJECT B-3887



DATUM DESCRIPTION
THE LOCALIZED COORDINATE SYSTEM DEVELOPED FOR THIS PROJECT IS BASED ON THE STATE PLANE COORDINATES ESTABLISHED BY NCDOT FOR MONUMENT "B3887-1" WITH NAD 1983/95 STATE PLANE GRID COORDINATES OF NORTHING: 316205.5848(11) EASTING: 2370381.8209(11) THE AVERAGE COMBINED GRID FACTOR USED ON THIS PROJECT (GROUND TO GRID) IS: 0.99994278 THE N.C. LAMBERT GRID BEARING AND LOCALIZED HORIZONTAL GROUND DISTANCE FROM "B3887-1" TO -L- STA. 11+40.00 IS 392.3687' N 28° 36' 09.15" E ALL LINEAR DIMENSIONS ARE LOCALIZED HORIZONTAL DISTANCES VERTICAL DATUM USED IS NAVD 88



FROM STA. 16+50-L TO STA. 17+00-L RT.
FROM STA. 18+00-L TO STA. 18+50-L LT.



-L-
PI Sta. 16+54.89
Δ = 21° 59' 00.7" (RT)
D = 2' 26' 17.2"
L = 901.66'
T = 456.44'
R = 2,350.00'

END CONSTRUCTION
-L- PT STA. 21+00.00
END STATE PROJECT B-3887

FOR -L- PROFILE SEE SHEET 5
FOR STRUCTURE PLANS SEE S1 THRU S-