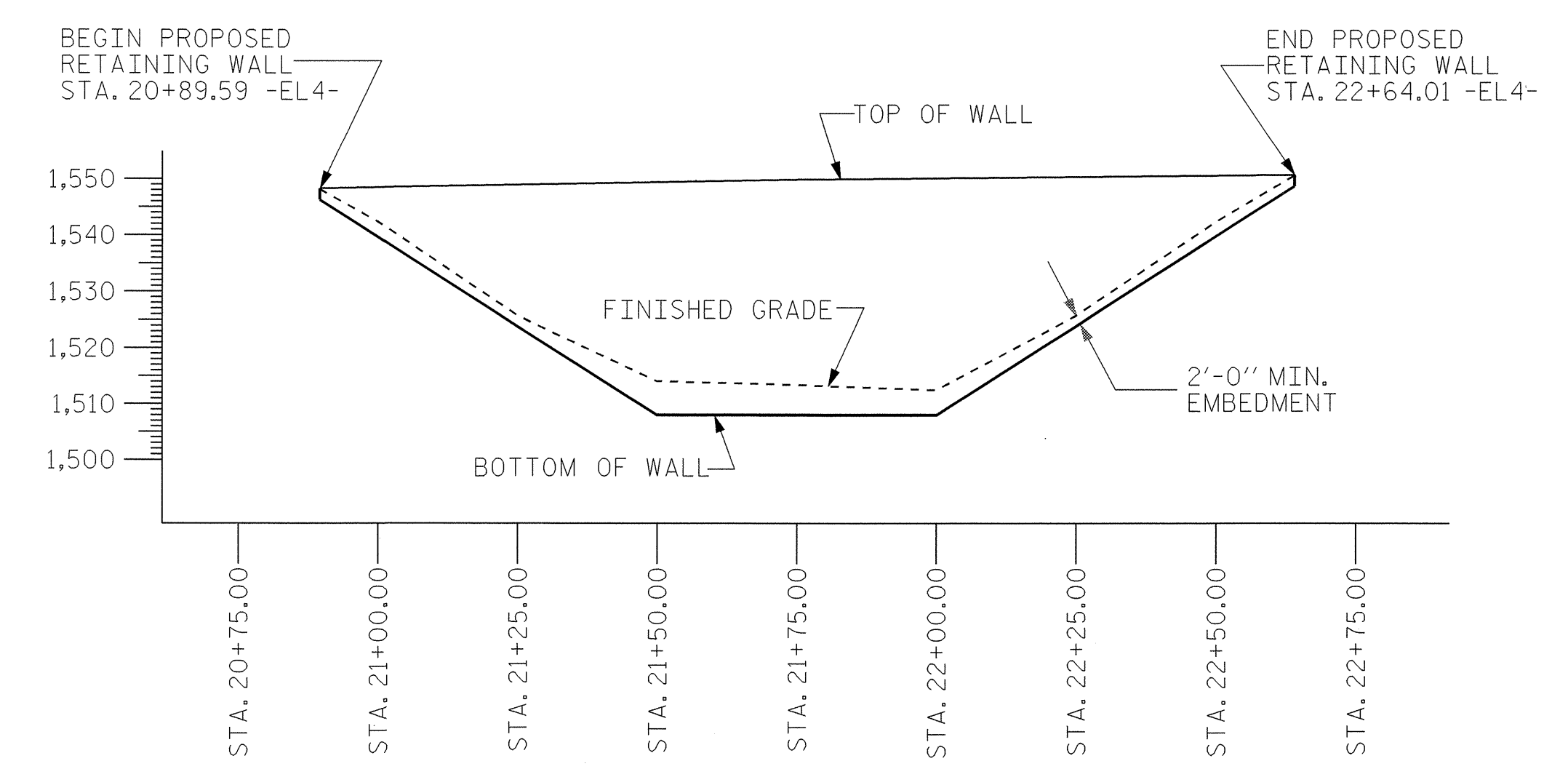


LOCATION SKETCH

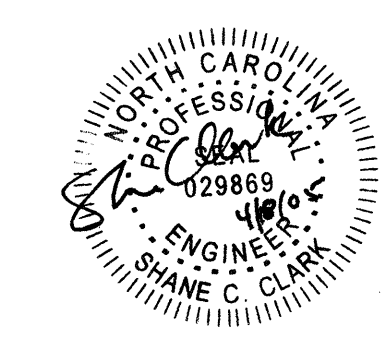
RETAINING WALL AT SLIDE #4 ELEVATIONS -EL4- STATION 20+89.59 TO 22+64.01					
-EL4- STATION	OFFSET FROM -EL4-	ELEVATION @ TOP OF WALL	ELEVATION @ BOTTOM OF WALL	ELEVATION @ FINISHED GRADE	WALL HEIGHT
20+89.59	14.00'	1548.62	1546.62	1548.62	2.0'
21+00.00	14.00'	1548.80	1539.97	1541.97	8.83'
21+25.00	14.00'	1549.23	1523.98	1525.99	25.25'
21+50.00	14.00'	1549.63	1508.00	1513.98	41.63'
21+75.00	14.00'	1550.14	1508.00	1513.38	42.14'
22+00.00	14.00'	1550.52	1508.00	1512.43	42.52'
22+25.00	14.00'	1550.90	1524.19	1526.19	26.71'
22+50.00	14.00'	1551.25	1540.38	1542.38	10.87'
22+64.01	14.00'	1551.45	1549.45	1551.45	2.0'



NOTE:
WALL TO BE EXTENDED TO ROCKLINE BETWEEN STATIONS 21+50 AND 22+00. SEE SPECIAL PROVISIONS.

ESTIMATED QUANTITIES FOR ANCHOR TIEBACK WALL	
PERMANENT ANCHOR TIEBACK WALL AT SLIDE #4 -EL4- STA. 20+89.59 TO 22+64.01	4,850 SQ. FT.
GROUT FOR TIEBACK ANCHORS AT WALL AT SLIDE #4 -EL3- STA. 20+89.59 TO 22+64.01	50 CU. YD.

PROJECT NO. 112.1044027
HAYWOOD COUNTY
 STATION: 20+89.59 -EL4- TO
22+64.01 -EL4-



STATE OF NORTH CAROLINA
 DEPARTMENT OF TRANSPORTATION
 RALEIGH
 PERMANENT ANCHOR TIEBACK RETAINING WALL AT SLIDE #4

SEE X-SECTION SHEET No.'s X-1 THRU X-25
 SEE PLAN SHEET No. 4

DRAWN BY : MIKE BRITT DATE : 2-28-05
 CHECKED BY : SHANE CLARK DATE : 3-21-05

REVISIONS				SHEET NO.	
NO.	BY:	DATE:	NO.	BY:	DATE:
1			3		
2			4		

TOTAL SHEETS