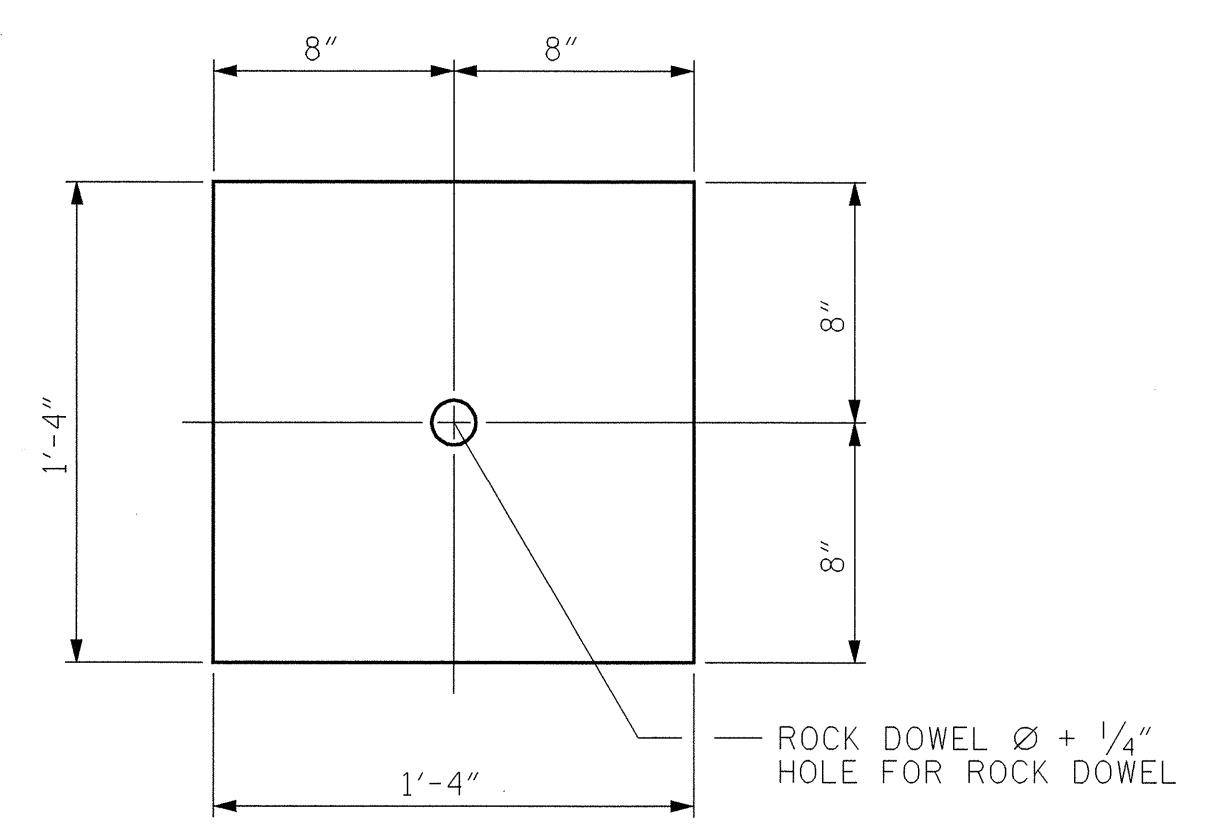
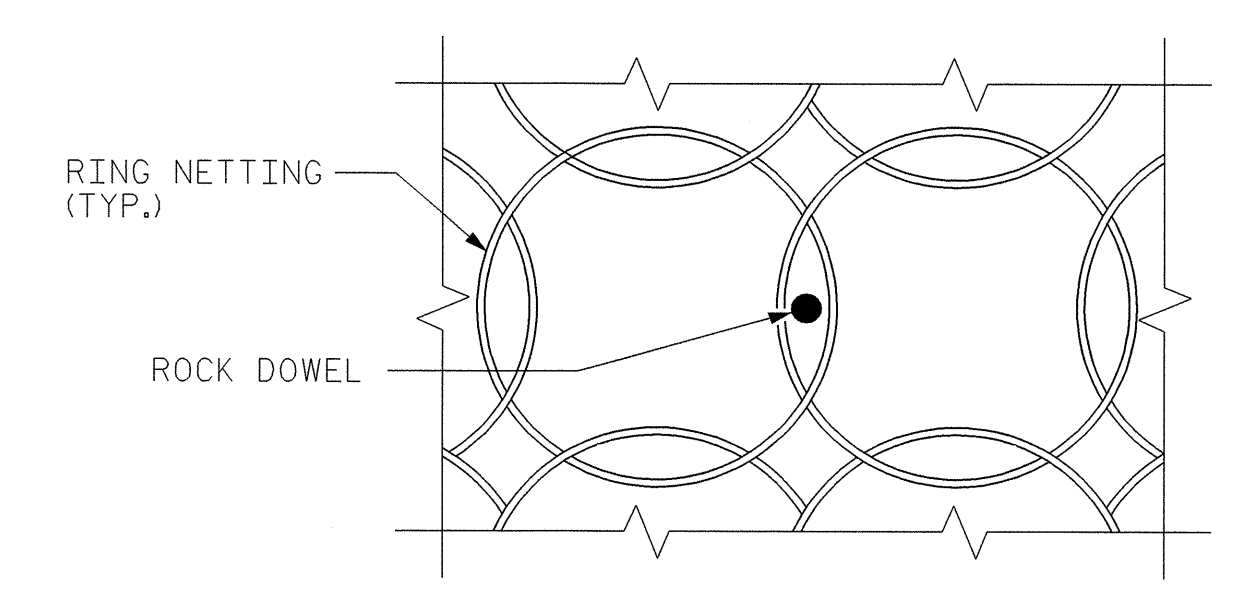
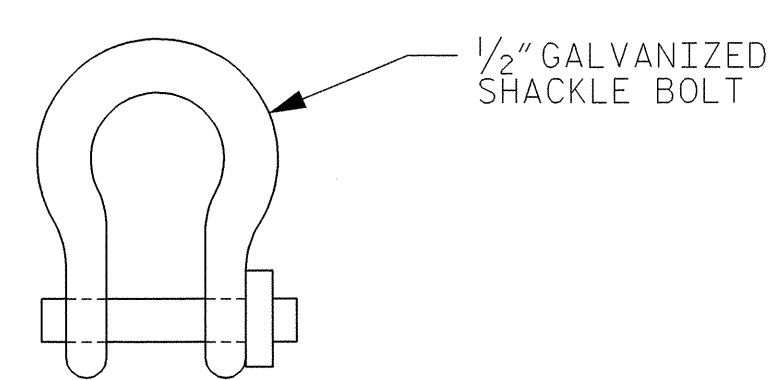
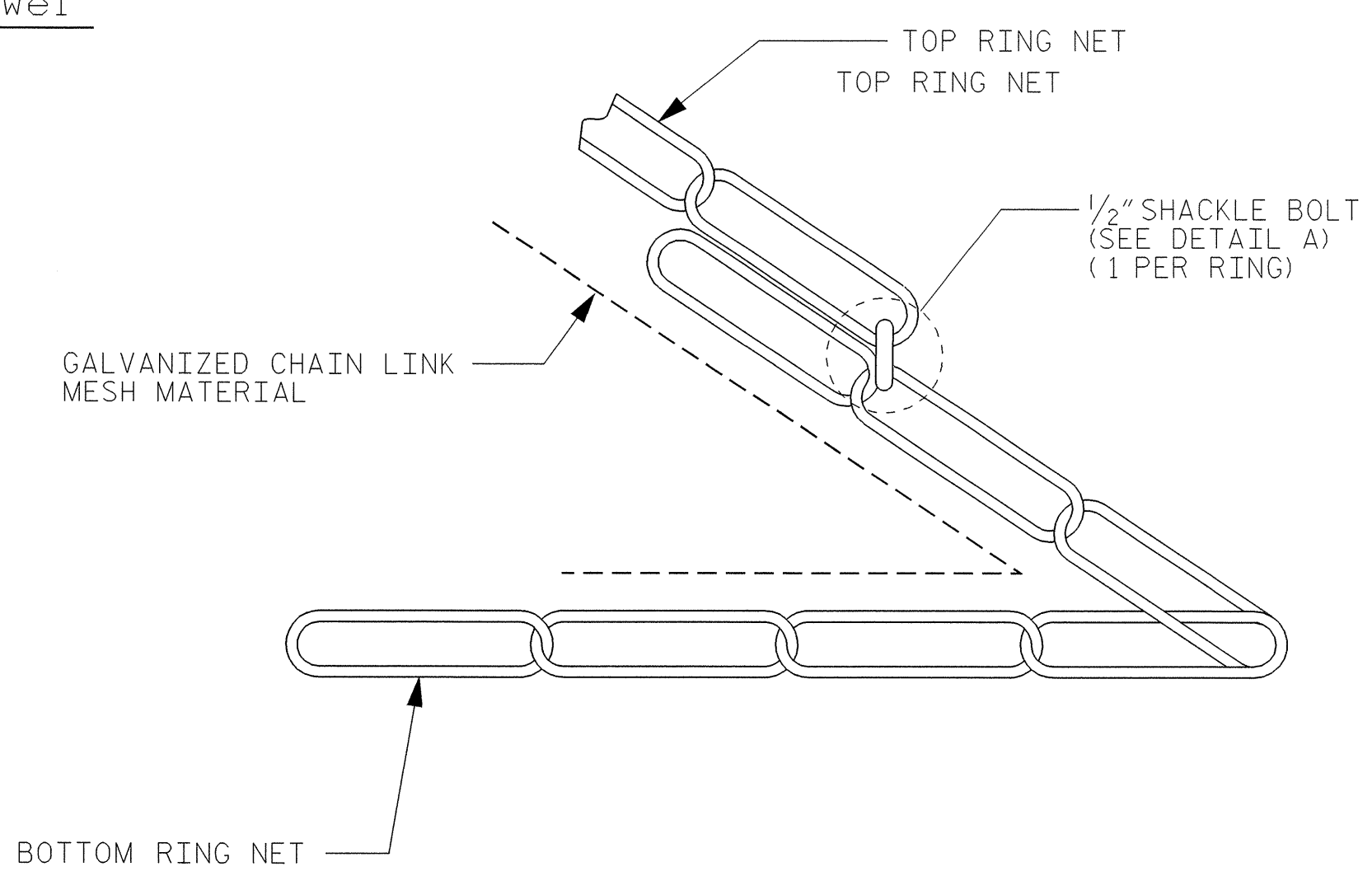
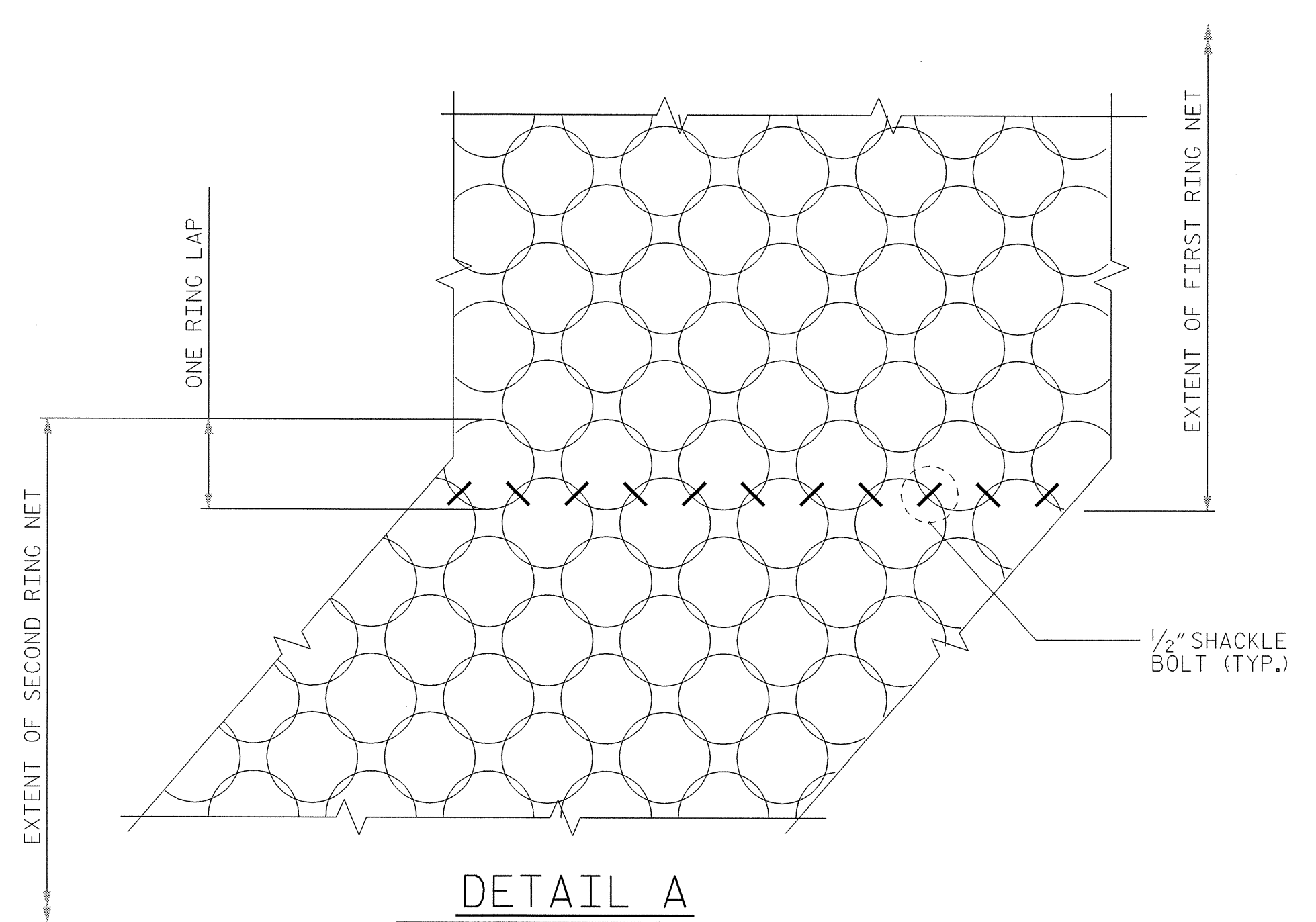
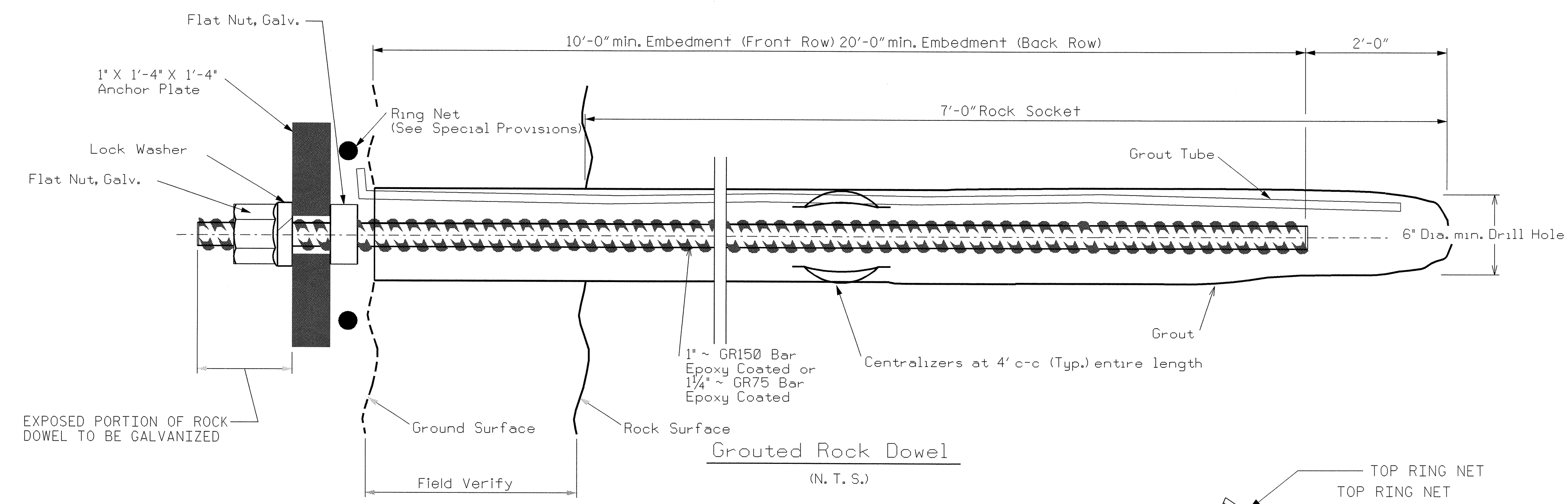


NOTES:

CONSTRUCT TOE SCOUR PROTECTION ACCORDING TO THE SPECIAL PROVISIONS, DETAILS, PLANS, AND AS DIRECTED BY THE ENGINEER.
 SEE SPECIAL PROVISIONS FOR TOE SCOUR PROTECTION.
 SEE SPECIAL PROVISIONS FOR ROCK DOWELS.
 PAYMENT FOR THE SHACKLE BOLTS WILL BE INCLUDED IN THE COST OF THE RING NET.

CONSTRUCTION SEQUENCE:

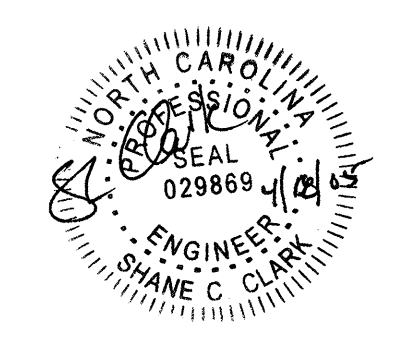
1. CLEAR AND LEVEL AREA WHERE RING NETS WILL BE PLACED.
2. INSTALL FRONT ROW ROCK DOWELS AS SHOWN ON THE PLANS, OR DIRECTED BY THE ENGINEER.
3. PLACE RING NET OVER FIRST DOWEL AND SECURE WITH THE ANCHOR PLATE ASSEMBLY AS SHOWN IN THE DETAIL.
4. TENSION RING NETS BY WHATEVER MEANS NECESSARY TO FULLY EXTEND NETTING AND PLACE NETTING OVER NEXT ROCK DOWEL.
5. PLACE CHAINLINK MESH MATERIAL ON TOP OF THE RING NETTING AND ALLOW 3'-0" TO OVERLAP UNDERNEATH THE EMBANKMENT.
6. PLACE CLASS VII MATERIAL IN 4 FOOT THICK LIFTS. END DUMPING ON RING NETS WILL NOT BE ALLOWED.
7. WHERE ROCK DOWELS ARE NOT PRESENT, PLACE RING NETS AND RIP RAP (CLASS A) AS SHOWN ON PLANS, OR DIRECTED BY THE ENGINEER. TENSION RING NETS BY WHATEVER MEANS NECESSARY.
8. ONCE THE EMBANKMENT HAS REACHED 20' IN HEIGHT, INSTALL THE BACK ROW OF ROCK DOWELS AND THE TOP AND FRONT OF THE RING NETTING, CHAIN LINK MESH (WITH 3'-0" OVERLAP), AND RIP RAP (CLASS A) AS SHOWN IN THE DETAIL, TENSION USING WHATEVER MEANS NECESSARY AND SECURE EVERY RING WITH A 1/2" SHACKLE.
9. CONTINUE ROCK BUTTRESS TO FINISHED ELEVATION.



ALT. RING CONNECTOR (SHACKLE BOLT)

PROJECT NO. 112.1044027
HAYWOOD COUNTY
 STATION: 19+50 TO 26+75

SHEET 2 OF 2



STATE OF NORTH CAROLINA
 DEPARTMENT OF TRANSPORTATION
 RALEIGH
TOE SCOUR PROTECTION AT SLIDE #5

REVISIONS						SHEET NO. 2-E
NO.	BY:	DATE:	NO.	BY:	DATE:	
1			2			TOTAL SHEETS
2			4			

DRAWN BY: M.A. ALLEN DATE: 03-05
 CHECKED BY: S.C. CLARK DATE: 03-05