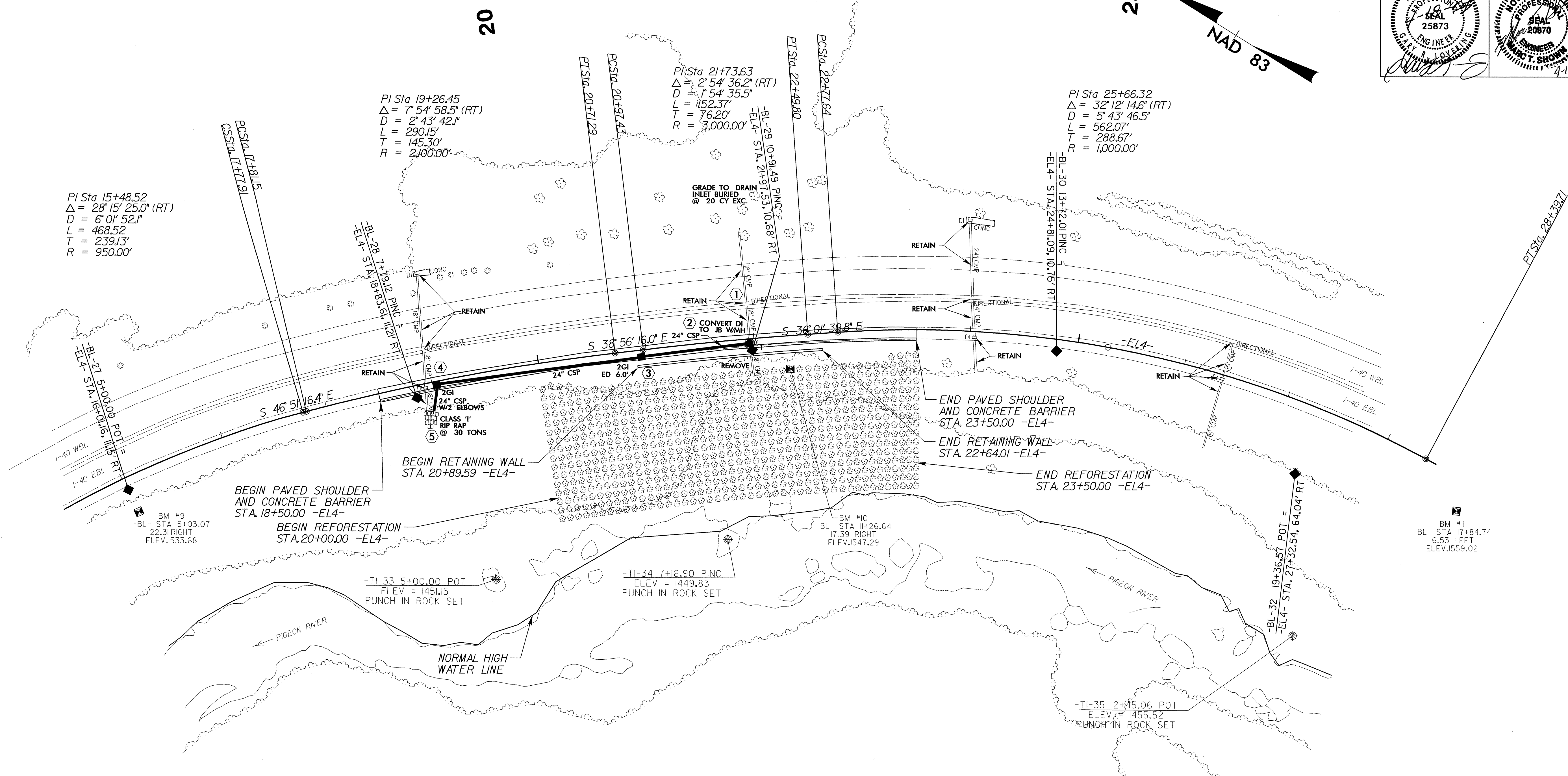
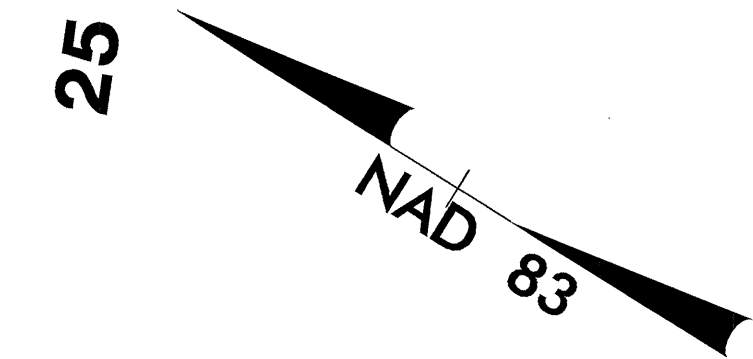


SITE 4



PI Sta 15+48.52
 $\Delta = 28^{\circ}15'25.0''$ (RT)
 $D = 6^{\circ}01'52.1''$
 $L = 468.52$
 $T = 239.13'$
 $R = 950.00'$

PI Sta 19+26.45
 $\Delta = 7^{\circ}54'58.5''$ (RT)
 $D = 2^{\circ}43'42.1''$
 $L = 290.15'$
 $T = 145.30'$
 $R = 2400.00'$

PI Sta 21+73.63
 $\Delta = 2^{\circ}54'36.2''$ (RT)
 $D = 1^{\circ}54'35.5''$
 $L = 152.37'$
 $T = 76.20'$
 $R = 3000.00'$

PI Sta 25+66.32
 $\Delta = 32^{\circ}12'14.6''$ (RT)
 $D = 5^{\circ}43'46.5''$
 $L = 562.07'$
 $T = 288.67'$
 $R = 1000.00'$

DATUM DESCRIPTION

THE LOCALIZED COORDINATE SYSTEM DEVELOPED FOR THIS PROJECT IS BASED ON THE NAD83/95 STATE PLANE COORDINATES FOR NCDOT MONUMENT "GPS-105" WITH A NORTHING OF 759840.695(FT), EASTING OF 789690.777(FT). THE AVERAGE COMBINED FACTOR USED ON THIS PROJECT (GROUND TO GRID) IS 0.99984289.

THE NC LAMBERT GRID BEARING AND LOCALIZED GROUND DISTANCE FROM "GPS-105" TO "EL4" STATION 10+00.00 IS $S 59^{\circ}41'25.16''$ 1287.30 (FT)

ALL LINEAR DISTANCES ARE LOCALIZED HORIZONTAL DISTANCES. THE VERTICAL DATUM IS BASED ON (NAVD 1988) NCDOT STATION "GPS-105" (ELEV 1555.24 FT.)

 PROPOSED REFORESTATION LIMITS SEE SHEET NO. RF-1

XSECS - SEE SHEETS X-1 THRU X-25
 SEE DETAIL SHEETS 2-B & 2-C FOR RETAINING WALL
 SEE SHEET NO. 6 FOR RETAINING WALL ENVELOPE

5/14/99
 18-APR-2005 10:01
 C:\noactive\A\1121044027\1121044027.dgn
 ES Robbins