

\* USE THIS DETAIL SHEET TO CLOSE THE ADJACENT SHOULDERS ON EITHER SIDE OF THE WORK AREA WHEN PERSONNEL AND/OR EQUIPMENT ARE WITHIN 40' OF AN OPEN TRAVEL LANE ON A DIVIDED FACILITY. USE SHEET TCP-6 TO CLOSE THE ADJACENT OPEN TRAVEL LANE ON EITHER SIDE OF THE WORK AREA WHEN PERSONNEL AND/OR EQUIPMENT ARE WITHIN 10' OF AN OPEN TRAVEL LANE ON A DIVIDED FACILITY.

\*\*

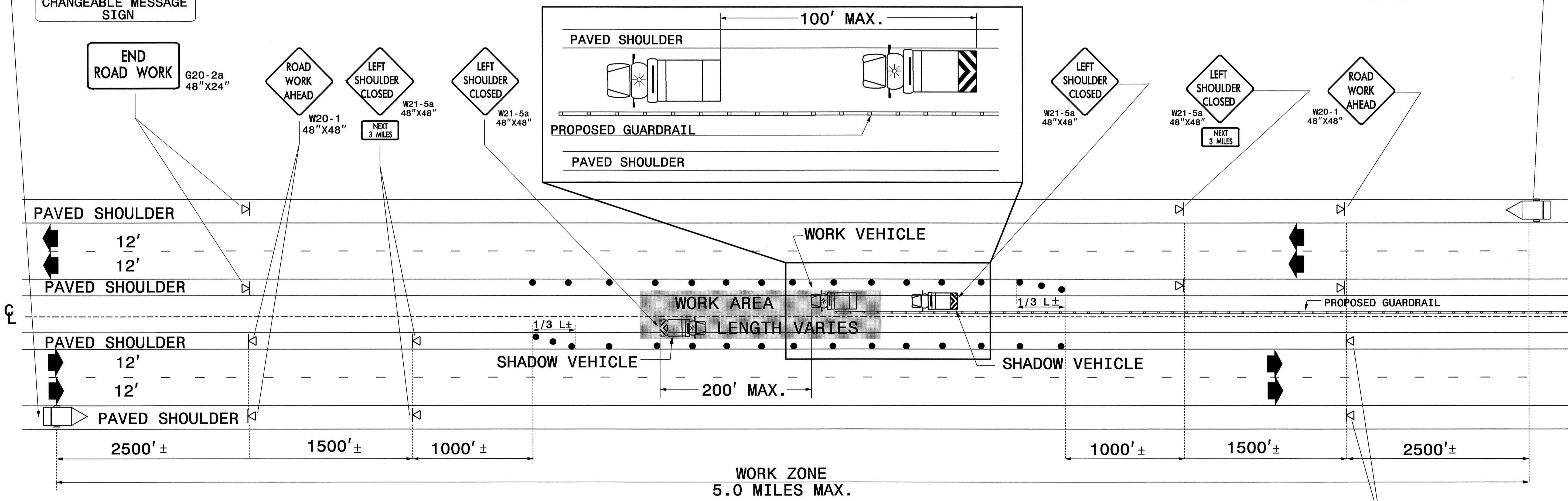
MESSAGE NO. 1	MESSAGE NO. 2
TRUCKS ENTERING HIGHWAY	MEDIAN WORK AHEAD

CHANGEABLE MESSAGE SIGN

\*\*

MESSAGE NO. 1	MESSAGE NO. 2
TRUCKS ENTERING HIGHWAY	MEDIAN WORK AHEAD

CHANGEABLE MESSAGE SIGN



**NOTES**

- USE PORTABLE MOUNT WORK ZONE WARNING SIGNS.
- WHEN WORK IS COMPLETED IN THE WORK ZONE, REMOVE ALL SIGNING AND SET UP NEXT WORK ZONE.
- MOUNT FLASHING ARROW BOARDS ON ALL WORK ZONE VEHICLES.
- OPERATE FLASHING ARROW BOARDS IN FOUR (4) CORNER CAUTION MODE

\*\* USE CHANGEABLE MESSAGE SIGNS ON HIGHWAYS WITH SPEED LIMIT OVER 55 MPH

APPROVED: <i>[Signature]</i> DATE: 2/25/05	WORK ZONE WARNING SIGNS FOR GUIDERAIL AND GUARDRAIL INSTALLATION	
	SCALE: NONE	
	DATE: 3/8/05	
	DWG. BY: SPC	
	DESIGN BY: SPC	
REVIEWED BY: JLP	REVISIONS	

25-FEB-2005 07:31  
 \\efs-ccfs01\vr44148\tcp-4414-tp3.dgn  
 scalfon AT TETC24103