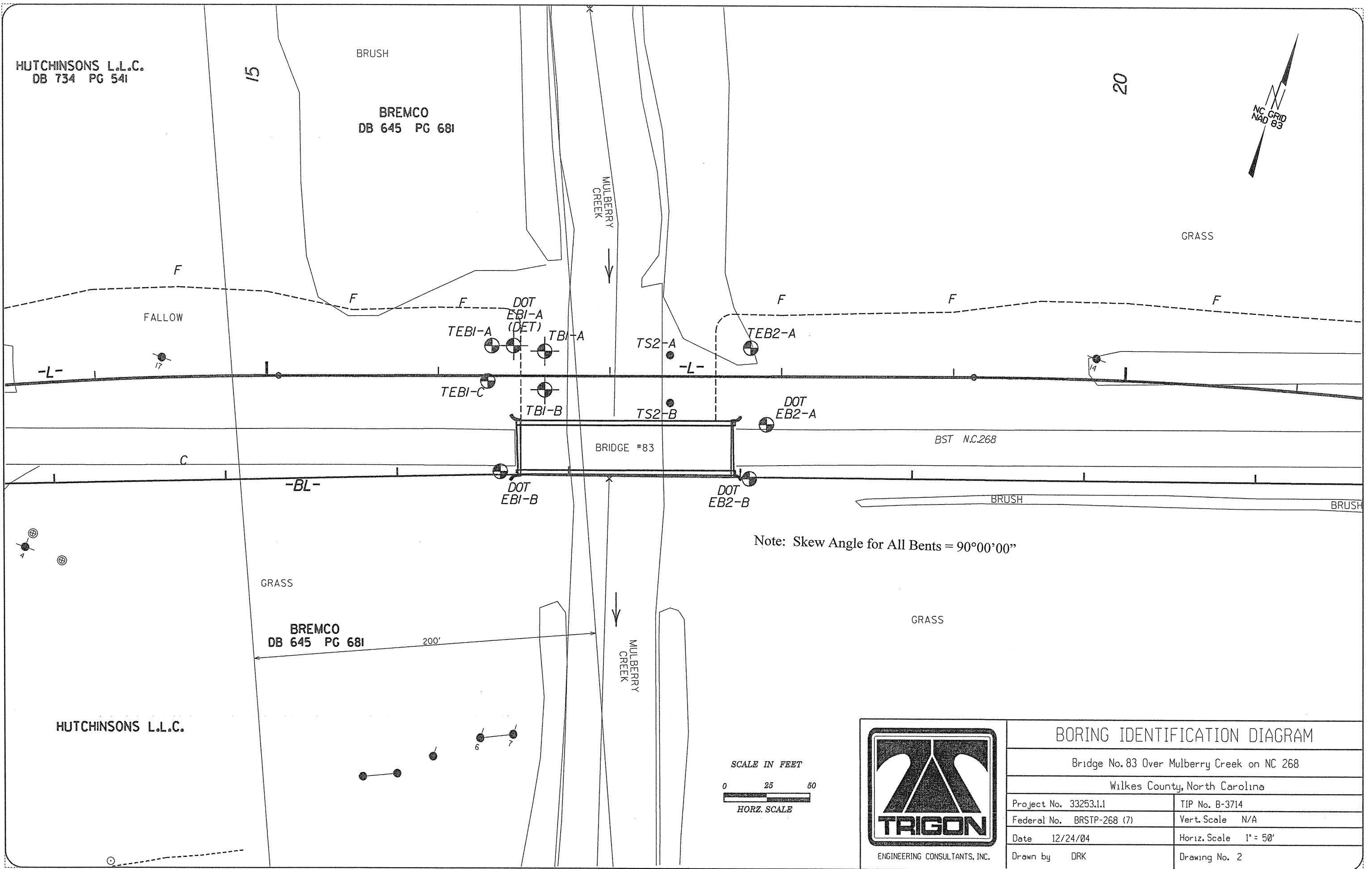


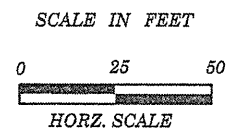
HUTCHINSONS L.L.C.
DB 734 PG 54I

BRUSH
BREMCO
DB 645 PG 68I



Note: Skew Angle for All Bents = 90°00'00"

BREMCO
DB 645 PG 68I
200'



ENGINEERING CONSULTANTS, INC.

BORING IDENTIFICATION DIAGRAM

Bridge No. 83 Over Mulberry Creek on NC 268

Wilkes County, North Carolina

Project No. 33253.1.1	TIP No. B-3714
Federal No. BRSTP-268 (7)	Vert. Scale N/A
Date 12/24/04	Horiz. Scale 1" = 50'
Drawn by DRK	Drawing No. 2

HUTCHINSONS L.L.C.