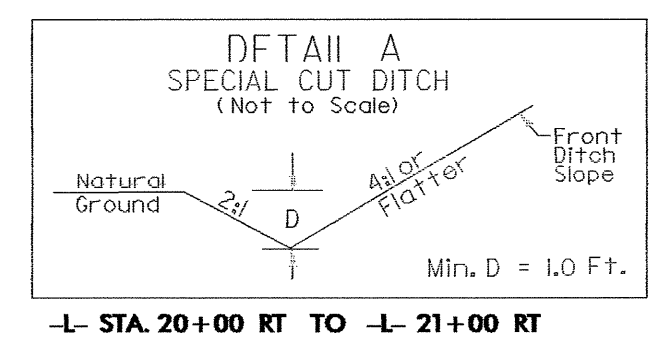
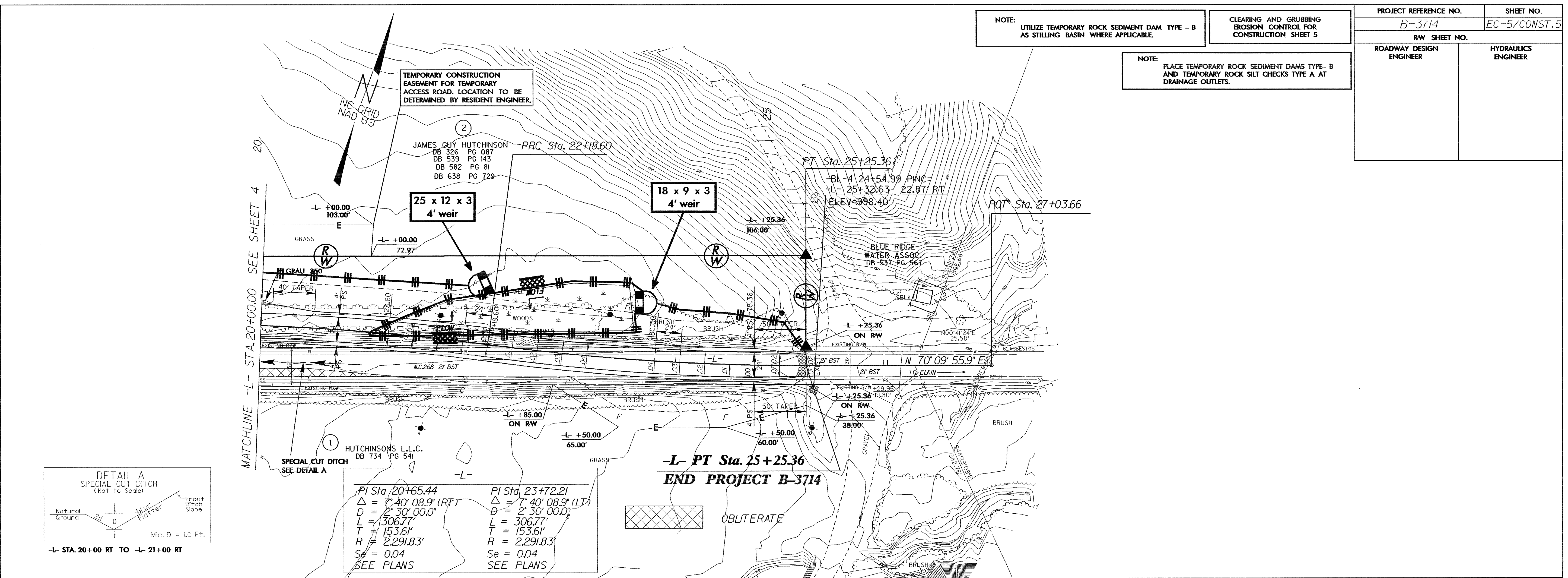


PROJECT REFERENCE NO.	SHEET NO.
B-3714	EC-5/CONST.5
RW SHEET NO.	
ROADWAY DESIGN ENGINEER	HYDRAULICS ENGINEER

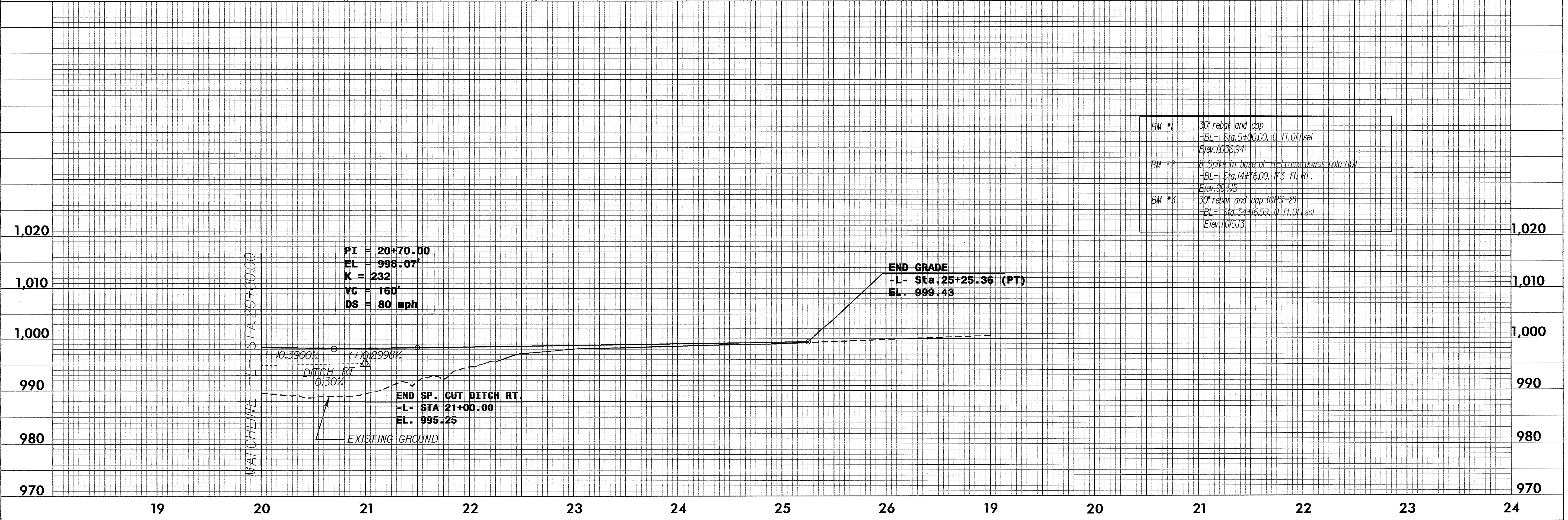
NOTE: UTILIZE TEMPORARY ROCK SEDIMENT DAM TYPE - B AS STILLING BASIN WHERE APPLICABLE.

CLEARING AND GRUBBING EROSION CONTROL FOR CONSTRUCTION SHEET 5

NOTE: PLACE TEMPORARY ROCK SEDIMENT DAMS TYPE - B AND TEMPORARY ROCK SILT CHECKS TYPE-A AT DRAINAGE OUTLETS.



PI Sta 20+65.44	PI Sta 23+72.21
$\Delta = 7' 40'' 08.9'' (RT)$	$\Delta = 7' 40'' 08.9'' (LT)$
$D = 2' 30'' 00.0''$	$D = 2' 30'' 00.0''$
$L = 306.77'$	$L = 306.77'$
$T = 153.61'$	$T = 153.61'$
$R = 2,291.83'$	$R = 2,291.83'$
$Se = 0.04$	$Se = 0.04$
SEE PLANS	SEE PLANS



BM #1	30' rebar and cap -BL- Sta. 5+00.00, 0 ft. offset Elev. 1036.94
BM #2	8" Spike in base of H-frame power pole (C) -BL- Sta. 14+16.00, 17.3 ft. RT. Elev. 994.15
BM #3	30' rebar and cap (GPS-2) -BL- Sta. 34+16.59, 0 ft. offset Elev. 1015.13

04-JAN-2005 08:38
d:\REU\tp\br\gea\B-3714\roadway\Proj\B3714_3Dv_PSH_05.cgn