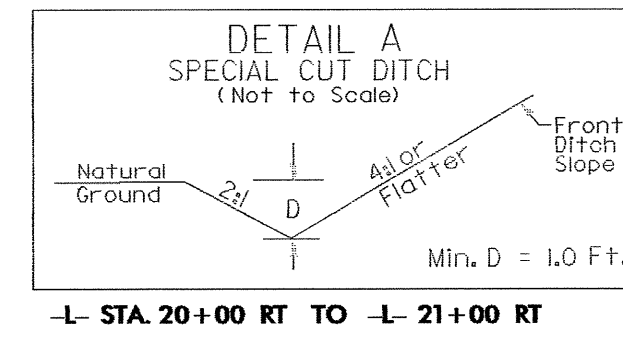
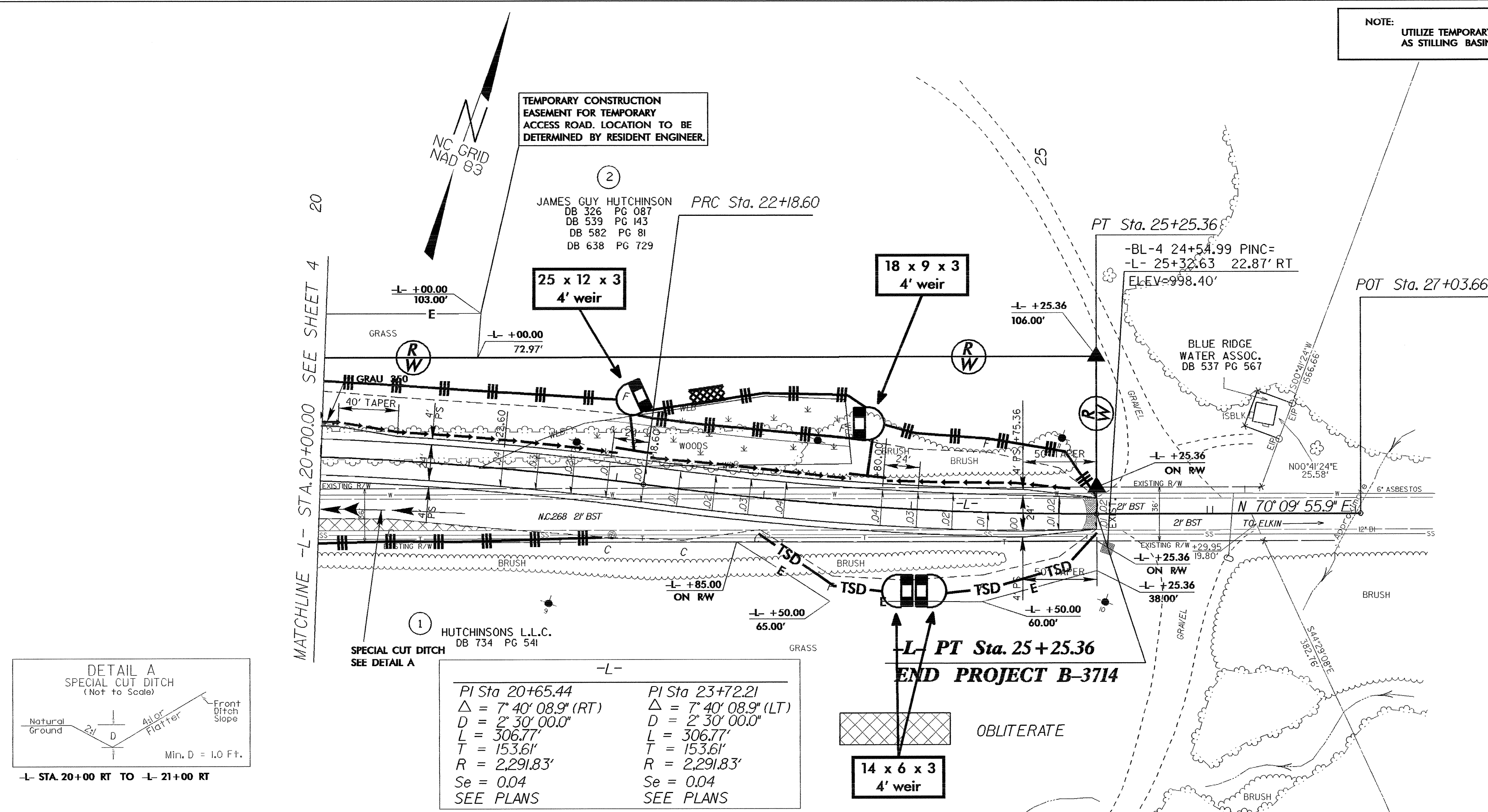


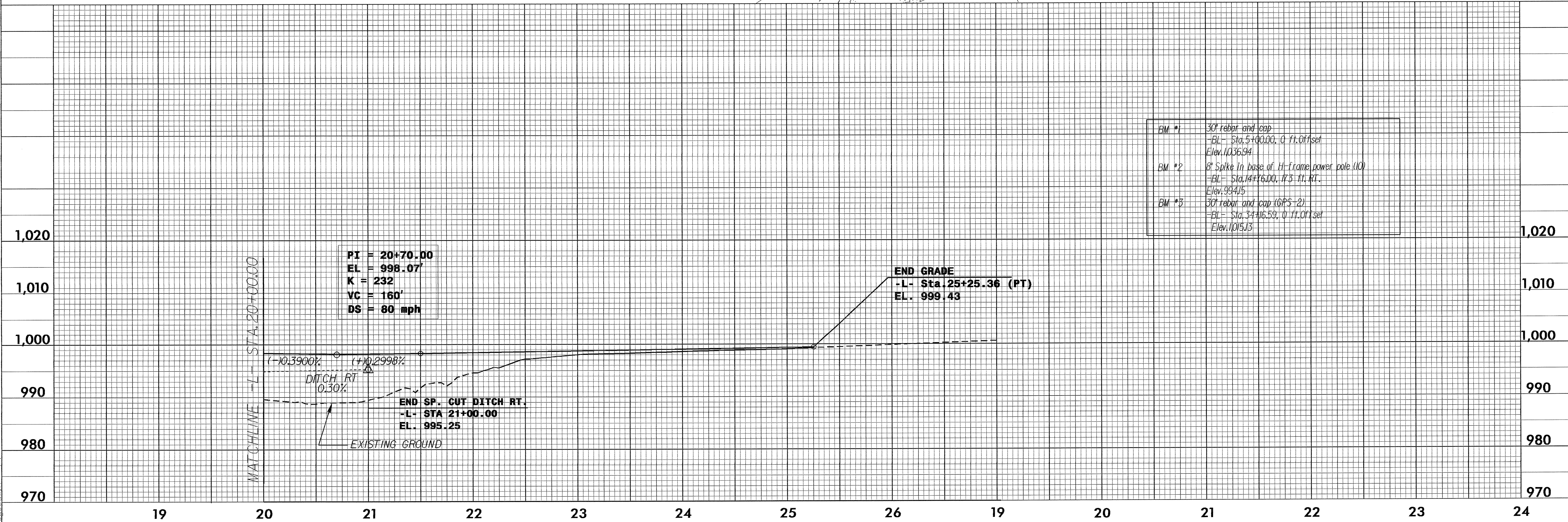
PROJECT REFERENCE NO.	SHEET NO.
B-3714	EC-7/CONST.5
RW SHEET NO.	HYDRAULICS ENGINEER
ROADWAY DESIGN ENGINEER	

NOTE: UTILIZE TEMPORARY ROCK SEDIMENT DAM TYPE - B AS STILLING BASIN WHERE APPLICABLE.



Station	Delta	D	L	T	R	Se
PI Sta 20+65.44	7° 40' 08.9" (RT)	2' 30" 00.0"	306.77'	153.61'	2,291.83'	0.04
PI Sta 23+72.21	7° 40' 08.9" (LT)	2' 30" 00.0"	306.77'	153.61'	2,291.83'	0.04

SEE PLANS



BM #1	30" rebar and cap -BL- Sta. 5+00.00, 0 ft. Offset Elev. 1036.94
BM #2	8" Spike in base of H-frame power pole (10) -BL- Sta. 14+16.00, 17.3 ft. RT. Elev. 984.15
BM #3	30" rebar and cap (GPS-2) -BL- Sta. 34+16.59, 0 ft. Offset Elev. 1015.13

04-JAN-2005 08:37
d:\RE\Tup\br\p\B-3714\roadway\Proc\B3714_RDY_PSH_05.dgn