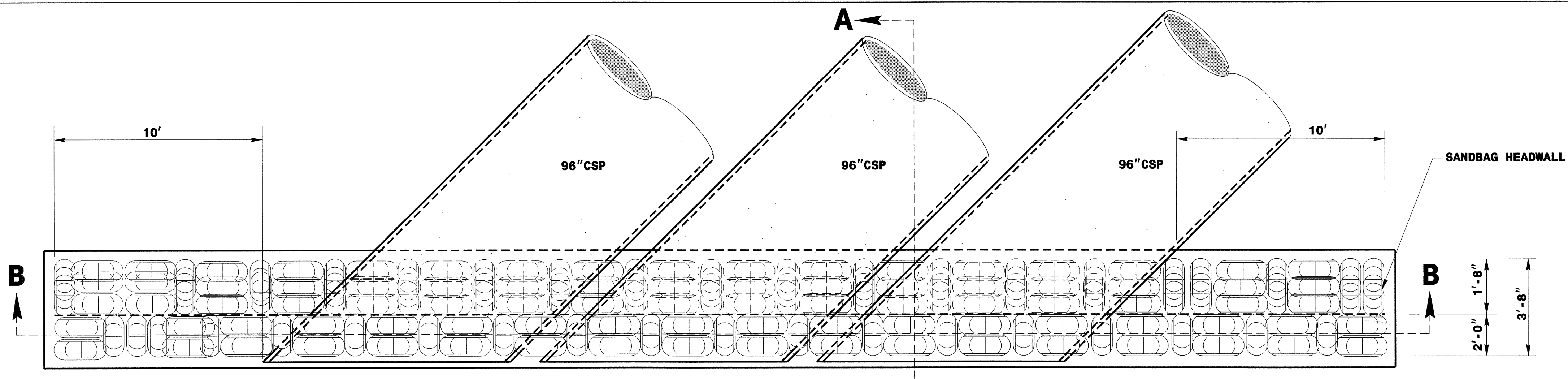
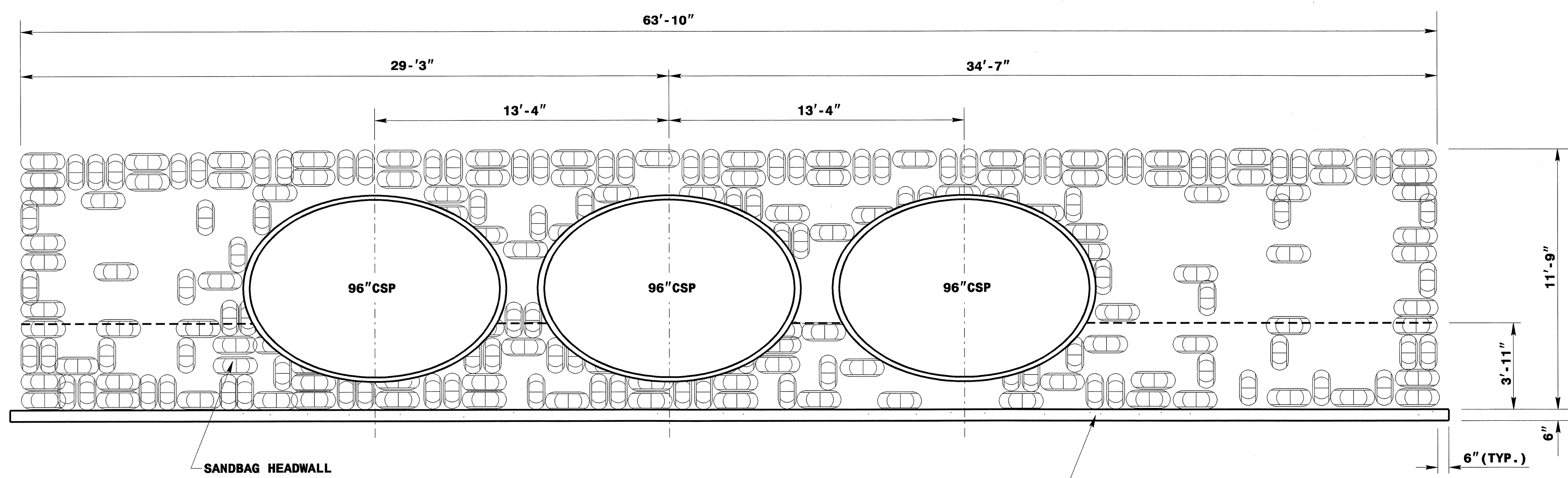


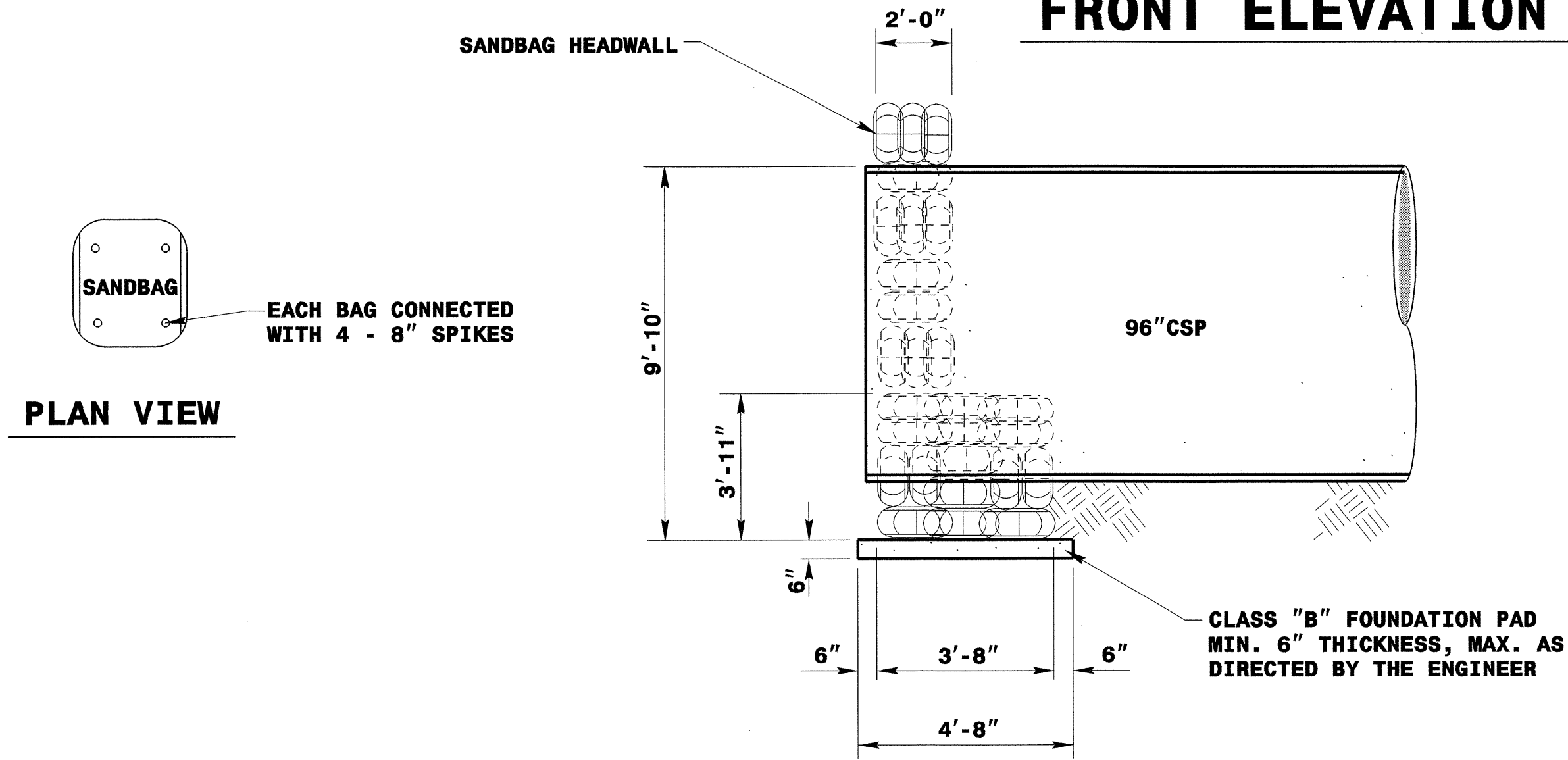
5/14/99



PLAN VIEW



FRONT ELEVATION



SECTION A-A

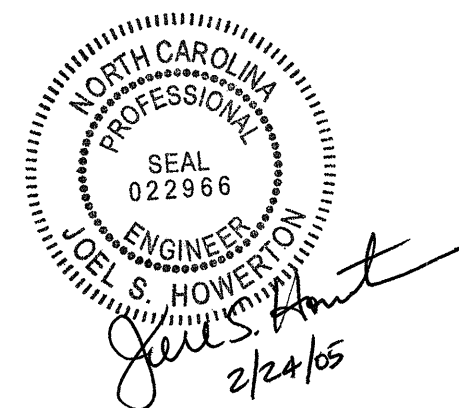
CLASS "B" FOUNDATION PAD
MIN. 6" THICKNESS, MAX. AS
DIRECTED BY THE ENGINEER

NOTES:

- * CLASS "B" CONCRETE FOUNDATION PAD MAY BE ELIMINATED FOR ROCK OR FIRM CLAY BED LOCATIONS AS DIRECTED BY THE ENGINEER.
- * CONSTRUCT HEADWALL IN ACCORDANCE WITH SPECIAL PROVISIONS AND THIS DETAIL.
- * #13 REINFORCING BARS (GRADE 60) 30" LONG MAY BE SUBSTITUTED FOR 8" SPIKES. THE #13 REINFORCING BARS SHALL BE DRIVEN THRU 5 SANDBAGS MAXIMUM.

QUANTITIES:

- * 71.8 CU. YDS. OF SANDBAG AREA.
- * 21.2 CU. YDS. AREA FOR 3-96" CSP
- 50.6 CU. YDS. TOTAL SANDBAG AREA IN WALL
- * 5.6 CU. YDS. OF CLASS "B" CONCRETE IN FOUNDATION.



**DESIGN SERVICES UNIT
STANDARDS AND SPECIAL DESIGN**
Office 919-250-4128 FAX 919-250-4119

3-96" CSP SANDBAG HEADWALL

ORIGINAL BY: *rnbritt* DATE: 01-26-05
 MODIFIED BY: *rnbritt* DATE: 1/31/05
 CHECKED BY: *Joel S. Howerton* DATE: 2/24/05
 FILE SPEC: *details/nbritt/english/bridge/b3709cspheadwall.dgn*

28-JAN-2005 07:29
 W:\Special_Details\nbritt\english\bridge\b3709 esp headwall.dgn
 .rnbritt .H