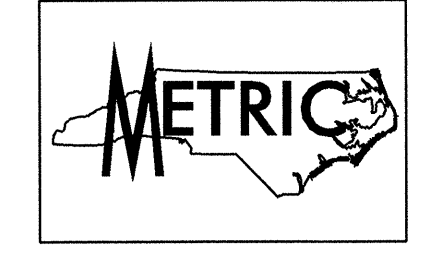
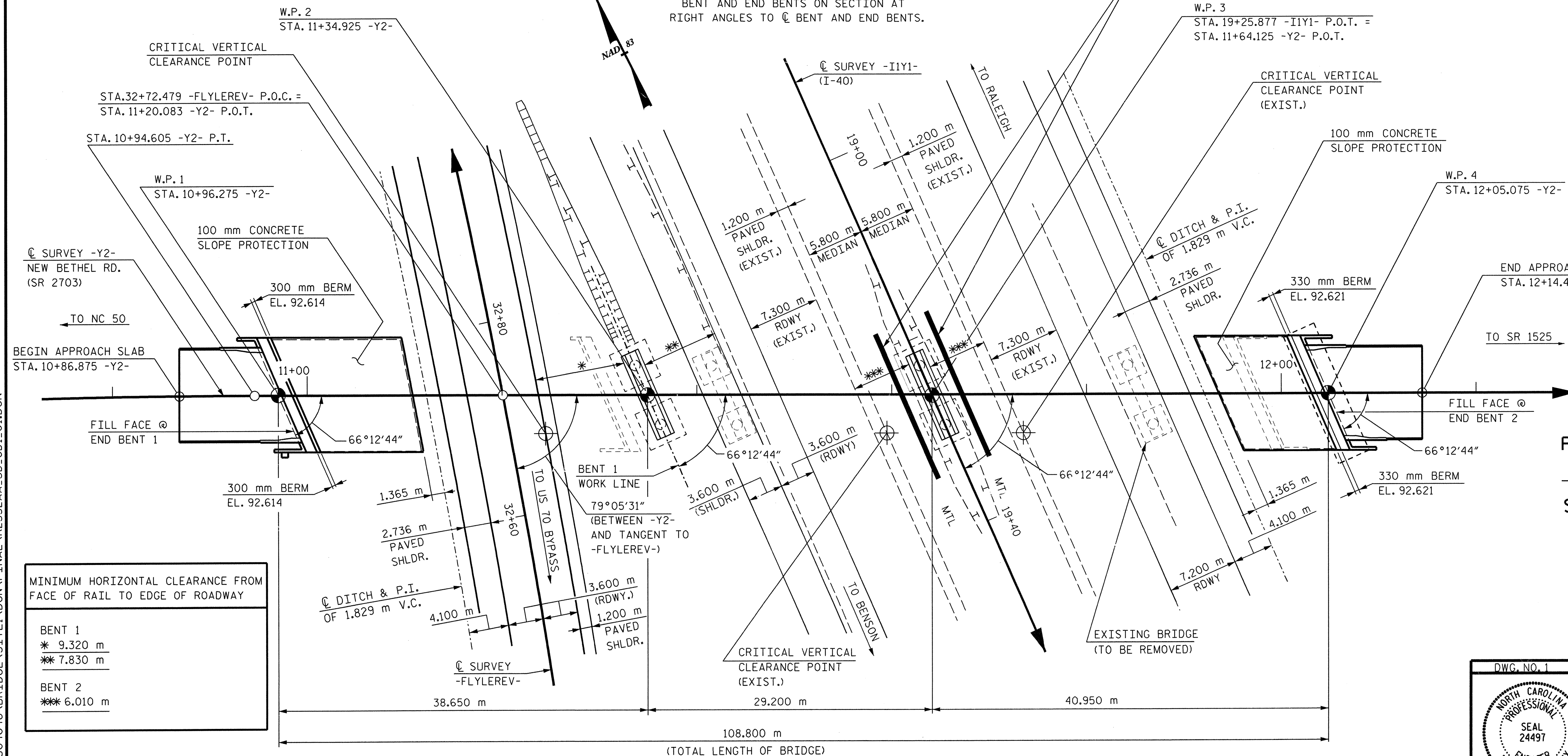


HORIZONTAL CURVE DATA

-FLYLEREV-	-Y2-
PI STA. 33+24.420	PI STA. 10+77.616
Δ = 13° 07' 17.0" (LT)	Δ = 1° 56' 49.2" (RT)
L = 200.385	L = 33.982
T = 100.633	T = 16.993
R = 875.000	R = 1,000.000
S.C. STA. = 32+23.788	
C.S. STA. = 34+24.173	

SECTION ALONG C SURVEY -Y2-
 BENT AND END BENTS ON SECTION AT RIGHT ANGLES TO C BENT AND END BENTS.



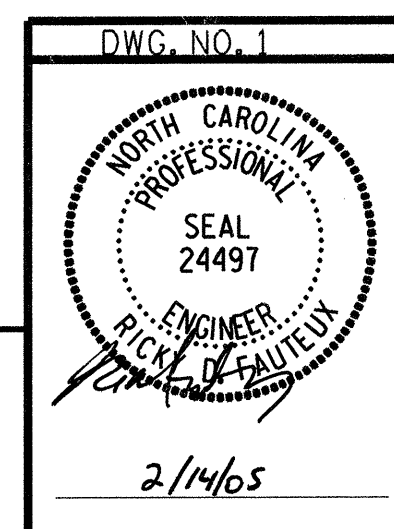
PROJECT NO. R-2552AA
WAKE / JOHNSTON COUNTY
STATION: 19+25.877 -I1Y1- P.O.T. = 11+64.125 -Y2- P.O.T.

SHEET 1 OF 3 REPLACES BRIDGE NO. 612

STATE OF NORTH CAROLINA
 DEPARTMENT OF TRANSPORTATION
 RALEIGH
 GENERAL DRAWING FOR
 BRIDGE ON NEW BETHEL ROAD (SR 2703)
 OVER I-40 BETWEEN
 NC 50 AND SR 1525

JANUARY 2005

REVISIONS						SHEET NO.
NO.	BY:	DATE:	NO.	BY:	DATE:	TOTAL SHEETS
1			3			429
2			4			



RUMMEL, KLEPPER & KAHL, LLP
 consulting engineers
 5800 FARINGDON PLACE - SUITE 105
 RALEIGH, NORTH CAROLINA 27609-3960

DRAWN BY: F.D. WEEDEN DATE: 01/05
 CHECKED BY: R.D. FAUTEUX DATE: 01/05

PLAN
 NOTE: PILES NOT SHOWN IN PLAN VIEW FOR CLARITY.

G:\COMMONS\304046\BRIDGE\STEL\DNK\FINAL\R2552AA_SD_GD1_01.DGN