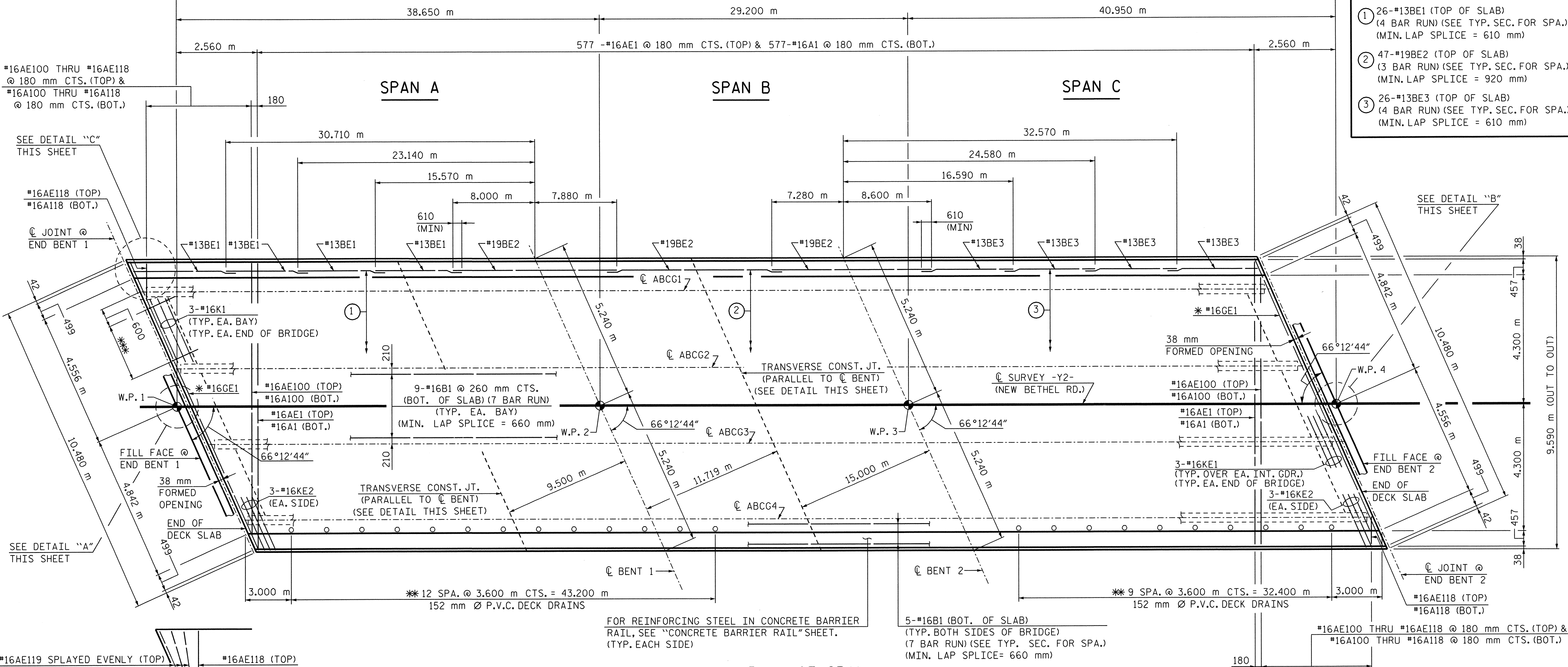
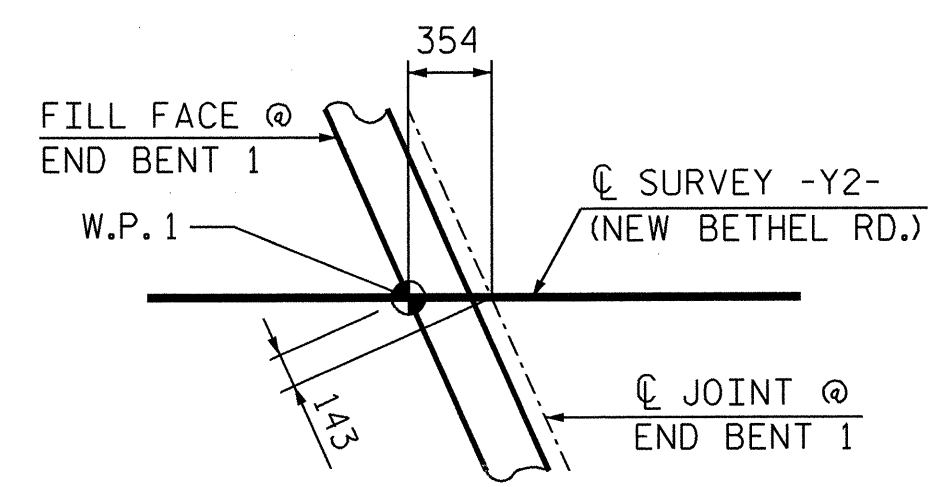


108.800 m (TOTAL LENGTH OF BRIDGE W.P. 1 TO W.P. 4)

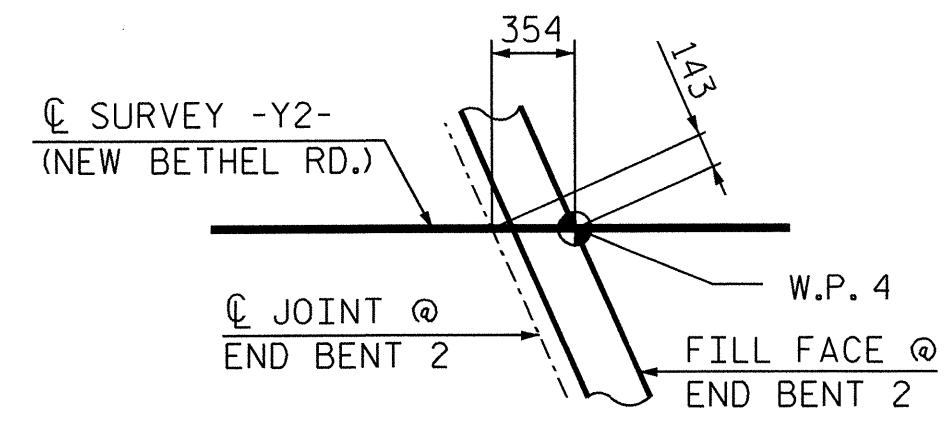


- ① 26-#13BE1 (TOP OF SLAB)
(4 BAR RUN) (SEE TYP. SEC. FOR SPA.)
(MIN. LAP SPLICE = 610 mm)
- ② 47-#19BE2 (TOP OF SLAB)
(3 BAR RUN) (SEE TYP. SEC. FOR SPA.)
(MIN. LAP SPLICE = 920 mm)
- ③ 26-#13BE3 (TOP OF SLAB)
(4 BAR RUN) (SEE TYP. SEC. FOR SPA.)
(MIN. LAP SPLICE = 610 mm)

PLAN OF SPAN



DETAIL "A"

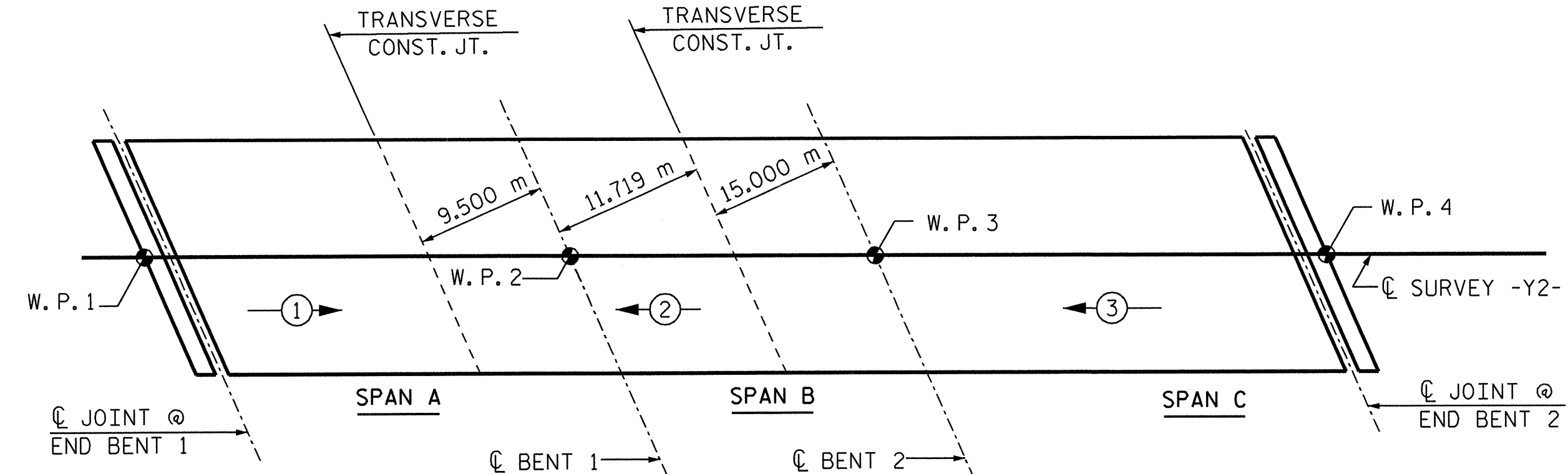


DETAIL "B"

#16AE119 SPLAYED EVENLY (TOP)
#16A119 SPLAYED EVENLY (BOT.)

**ACUTE CORNER SLAB
REINFORCEMENT EB1 & EB2
DETAIL "C"**

- * SEE "SUPERSTRUCTURE TYPICAL SECTION DETAILS" SHEET FOR PLACEMENT OF #16GE1 BARS.
- ** SEE "SUPERSTRUCTURE CLOSED DRAINAGE SYSTEM" SHEETS FOR DETAILS OF 152 mm Ø P.V.C. DECK DRAINS.
- *** 7-#13SE1 @ 300 mm CTS. (TYP. EA. BAY) (TYP. EA. END OF BRIDGE)



SLAB POURING SEQUENCE

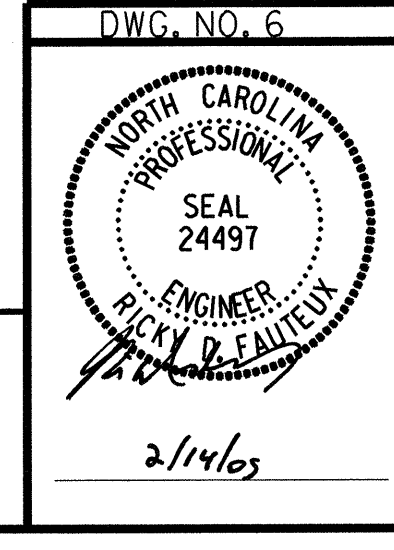
NOTE: REINFORCING STEEL IN SLAB NOT SHOWN.
LONGITUDINAL AND TRANSVERSE REINFORCING
STEEL SHALL BE CONTINUOUS THRU JOINT.

TRANSVERSE CONST. JOINT IN DECK SLAB

PROJECT NO. R-2552AA
WAKE / JOHNSTON COUNTY
STATION: 19+25.877 -I1Y1- P.O.T.

STATE OF NORTH CAROLINA
DEPARTMENT OF TRANSPORTATION
RALEIGH
SUPERSTRUCTURE
PLAN OF SPANS A, B & C
JANUARY 2005

NO.		BY:		DATE:		REVISIONS		SHEET NO.	
1						3		5-6	TOTAL SHEETS
2						4		429	



RUMMEL, KLEPPER & KAHL, LLP
consulting engineers
5800 FARMINGTON PLACE - SUITE 105
RALEIGH, NORTH CAROLINA 27609-3960

G:\COMMONS\304046\BRIDGE\STEL\DCN\FINAL\ R2552AA_SD_PS_01.DGN

DRAWN BY: B. PARRISH DATE: 01/05
CHECKED BY: R. D. FAUTEUX DATE: 01/05