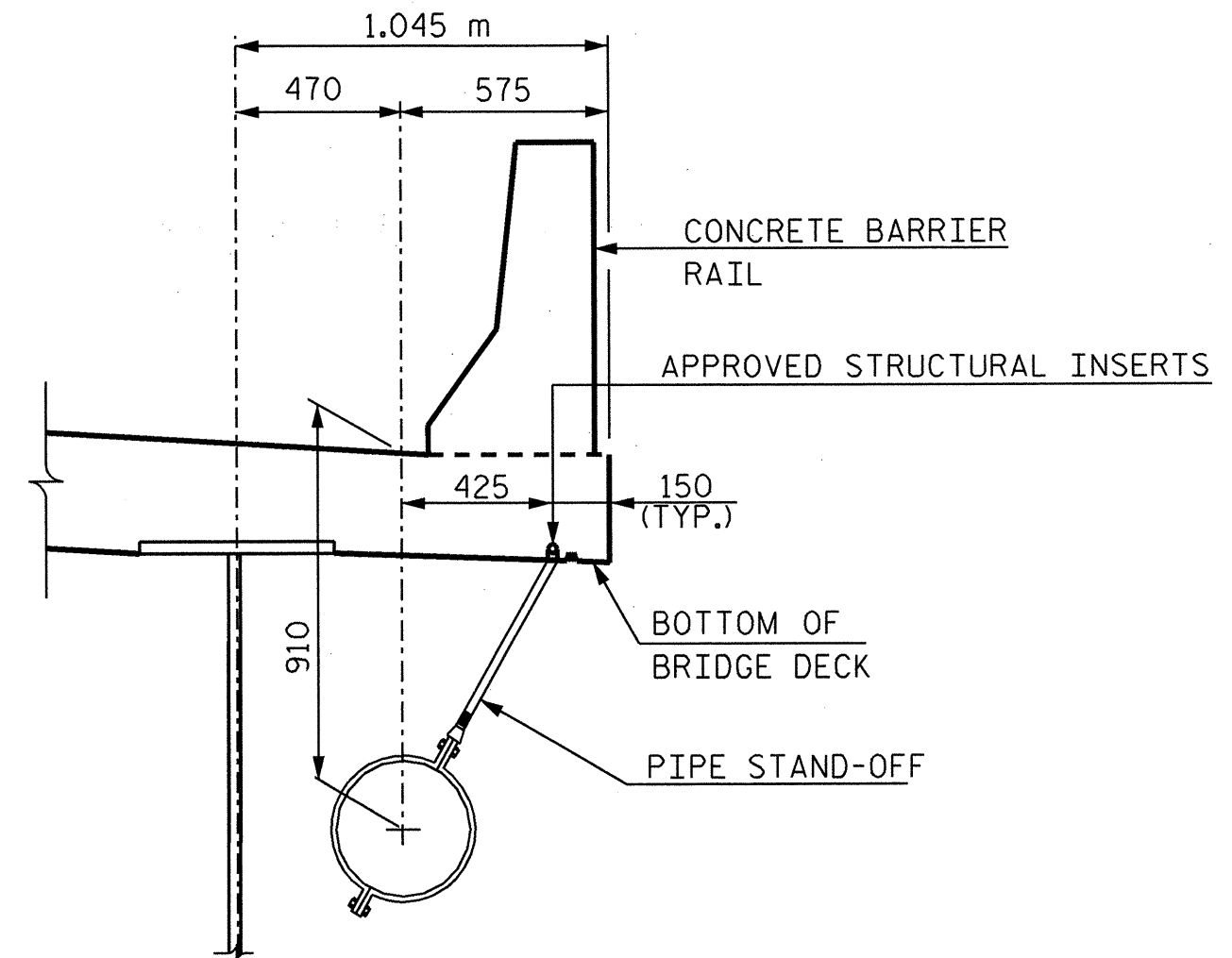
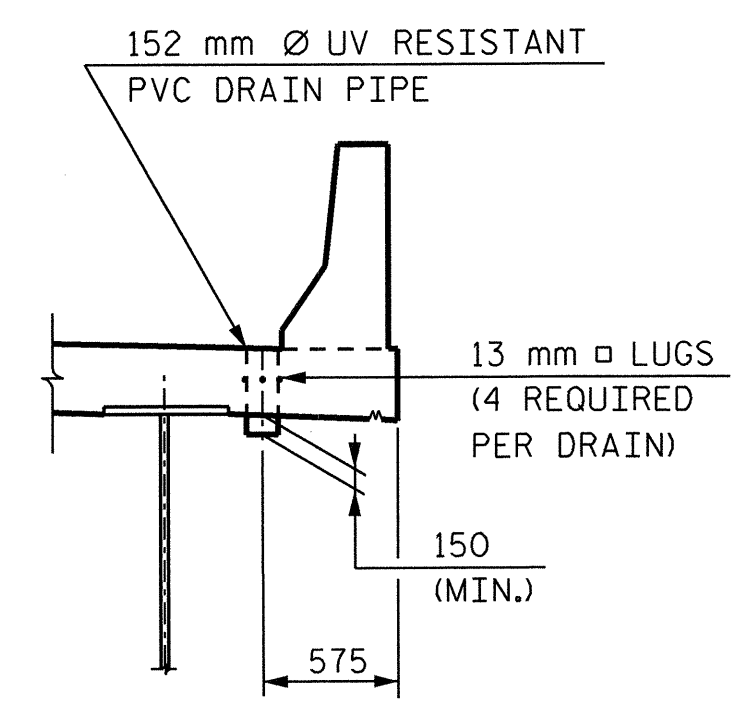


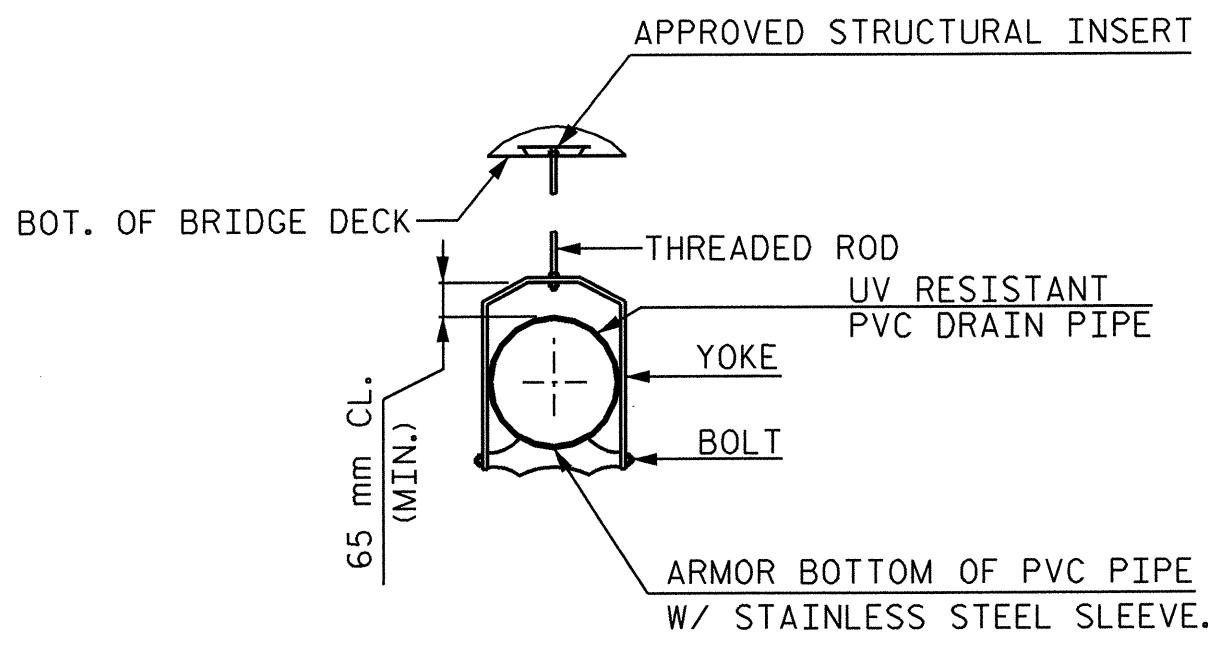
**EXPANSION COUPLING DETAIL**  
 PVC EXPANSION DRAIN COUPLINGS SHALL CONTAIN A METHOD OF RESTRAINT TO PREVENT PULLOUT.



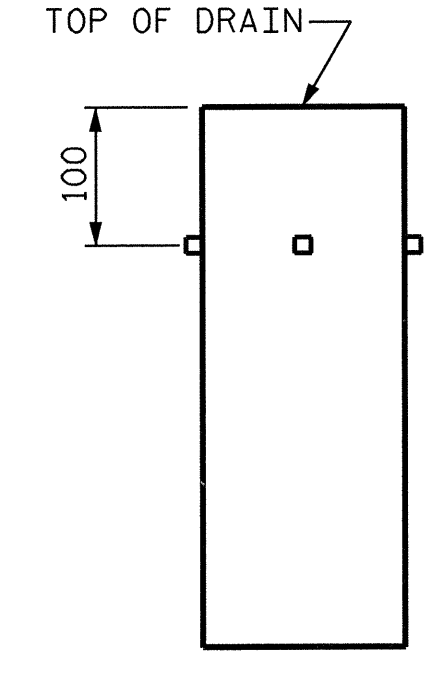
**PIPE STAND-OFF DETAIL**  
 ALL COMPONENTS SHALL BE GALVANIZED AFTER FABRICATION.



**RIGHT ELEVATION**

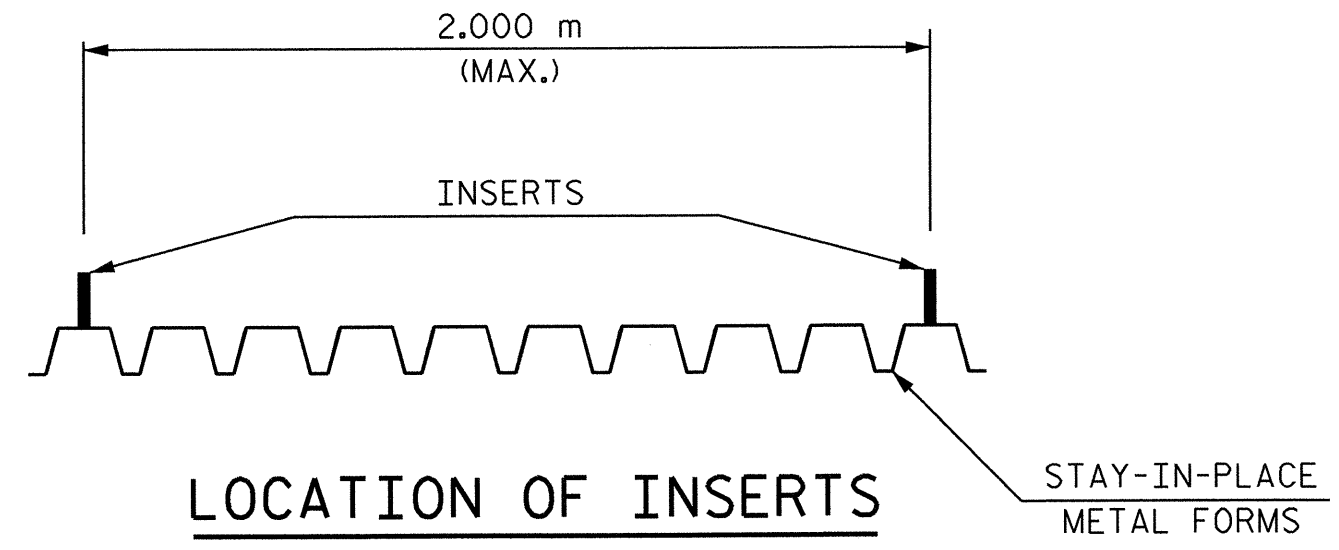


**PIPE HANGER DETAIL**  
 ALL COMPONENTS SHALL BE GALVANIZED AFTER FABRICATION.



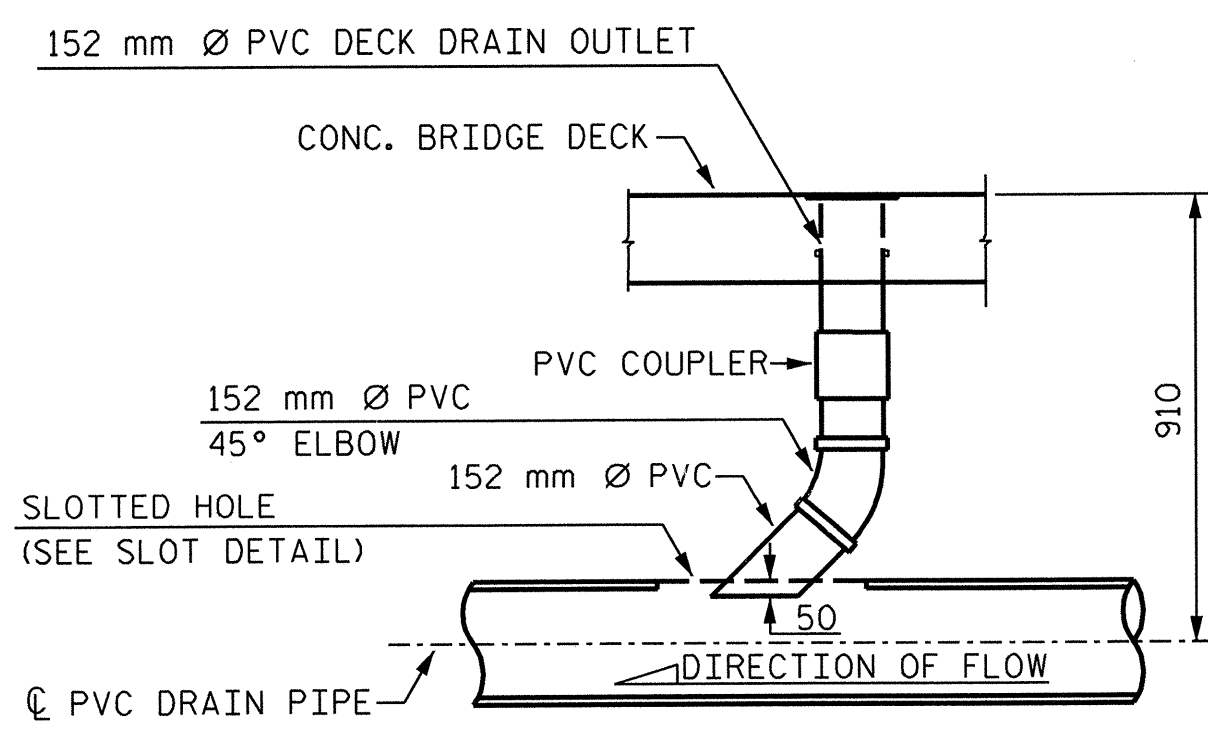
**PIPE DETAIL**  
 4 - 13 mm Ø LUGS TO BE GLUED TO THE PVC PLASTIC PIPE AT EQUAL SPACES AROUND THE PIPE DRAIN.

**DECK DRAIN DETAILS**

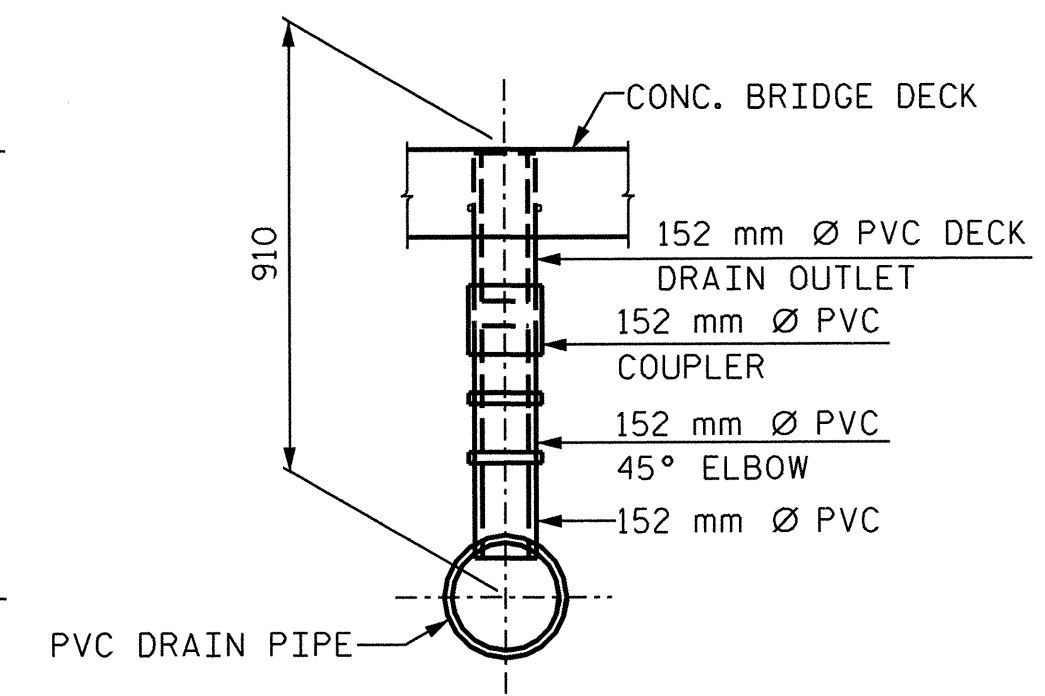


**LOCATION OF INSERTS IN STAY-IN-PLACE FORMS**

EXACT SPACING MAY VARY SLIGHTLY TO ENSURE THAT INSERTS ARE LOCATED ON PEAKS OF FORMS.

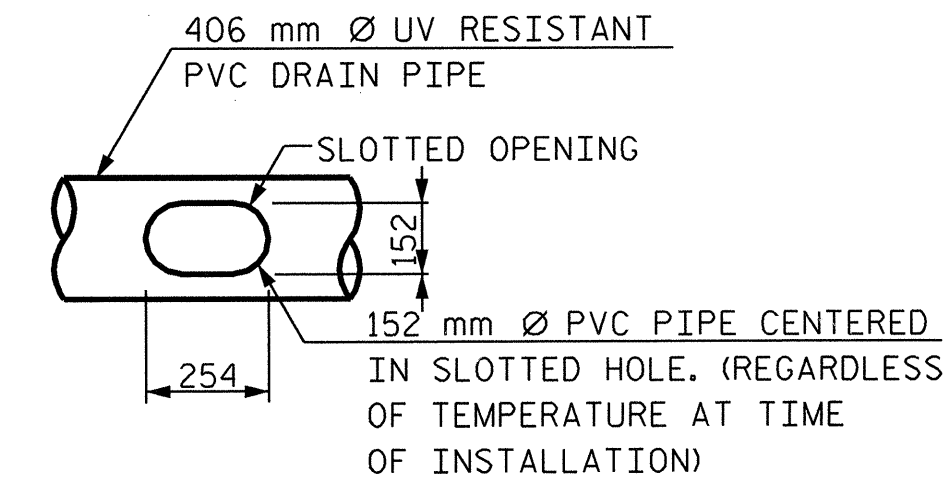


**SIDE VIEW**



**SECTION VIEW**

**DRAIN OUTLET DETAILS**



**SLOT DETAIL**

**NOTES:**

FOR LOCATIONS OF DECK DRAINS, SEE "PLAN OF SPANS" SHEET AND "CLOSED DRAINAGE SYSTEM LAYOUT SHEET", SHEET 1 OF 2.

DECK DRAINS SHALL BE 152 mm Ø UV RESISTANT PVC PIPE.

TOP OF DECK DRAINS TO BE SET 10 mm BELOW SURFACE OF SLAB AND EXTEND A MIN. OF 152 mm BELOW BOTTOM OF DECK.

PVC DECK DRAINS SHALL BE PAINTED WITH TWO COATS OF BROWN PRIMER MEETING THE REQUIREMENTS OF ARTICLE 1080-12 OF THE STANDARD SPECIFICATIONS. EACH COAT SHALL BE 0.050 mm THICK. DECK DRAINS SHALL BE ROUGHENED PRIOR TO PAINTING. NO SEPARATE PAYMENT SHALL BE MADE FOR PAINTING PVC DECK DRAINS AS THIS IS CONSIDERED INCIDENTAL TO THE PAY ITEM FOR REINFORCED CONCRETE DECK SLAB.

COST OF 152 mm Ø PVC DRAIN PIPE SHALL BE CONSIDERED INCIDENTAL TO THE PAY ITEM FOR REINFORCED CONCRETE DECK SLAB.

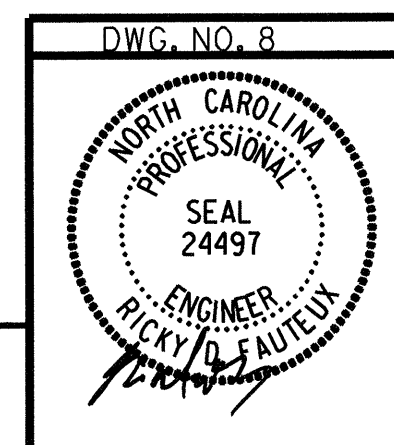
THE 152 mm Ø PVC PIPE AND FITTINGS SHALL BE SCHEDULE 40 AND CONFORM TO ASTM D1785.

SEE ROADWAY PLANS FOR DETAILS AND PAY ITEM FOR JUNCTION BOX AT APPROXIMATE STATION 10+80 -Y2- AND STATION 12+20 -Y2-.

G:\COMMONS\304046\BRIDGE\SITE\1\DRAWING\FINAL\R2552AA-SD-DR2-01.DGN

DRAWN BY: F.D. WEEDEN DATE: 01/05  
 CHECKED BY: R.D. FAUTEUX DATE: 01/05

**RUMMEL, KLEPPER & KAHL, LLP**  
 consulting engineers  
 5800 FARINGDON PLACE - SUITE 105  
 RALEIGH, NORTH CAROLINA 27609-3960



PROJECT NO. R-2552AA  
WAKE / JOHNSTON COUNTY  
 STATION: 19+25.877 -I1Y1- P.O.T.

SHEET 2 OF 2

STATE OF NORTH CAROLINA DEPARTMENT OF TRANSPORTATION RALEIGH					
SUPERSTRUCTURE CLOSED DRAINAGE SYSTEM DETAILS					
JANUARY			2005		
REVISIONS					
NO.	BY:	DATE:	NO.	BY:	DATE:
1			3		
2			4		
					TOTAL SHEETS
					5-2
					429