

LOCATION	BEARING	MARK
END BENT #1	EB-1	MP-1
BENT #1	EB-2	MP-2
BENT #3	EB-3	MP-3
END BENT #2	EB-4	MP-1

LOCATION	BEARING	MARK
END BENT #1	EB-1	SP-1
BENT #1	EB-2	SP-2
BENT #3	EB-3	SP-4
END BENT #2	EB-4	SP-5

LOCATION	LENGTH	PROJECTION
END BENT #1	484mm	104mm
BENT #1	484mm	104mm
BENT #3	484mm	104mm
END BENT #2	484mm	104mm

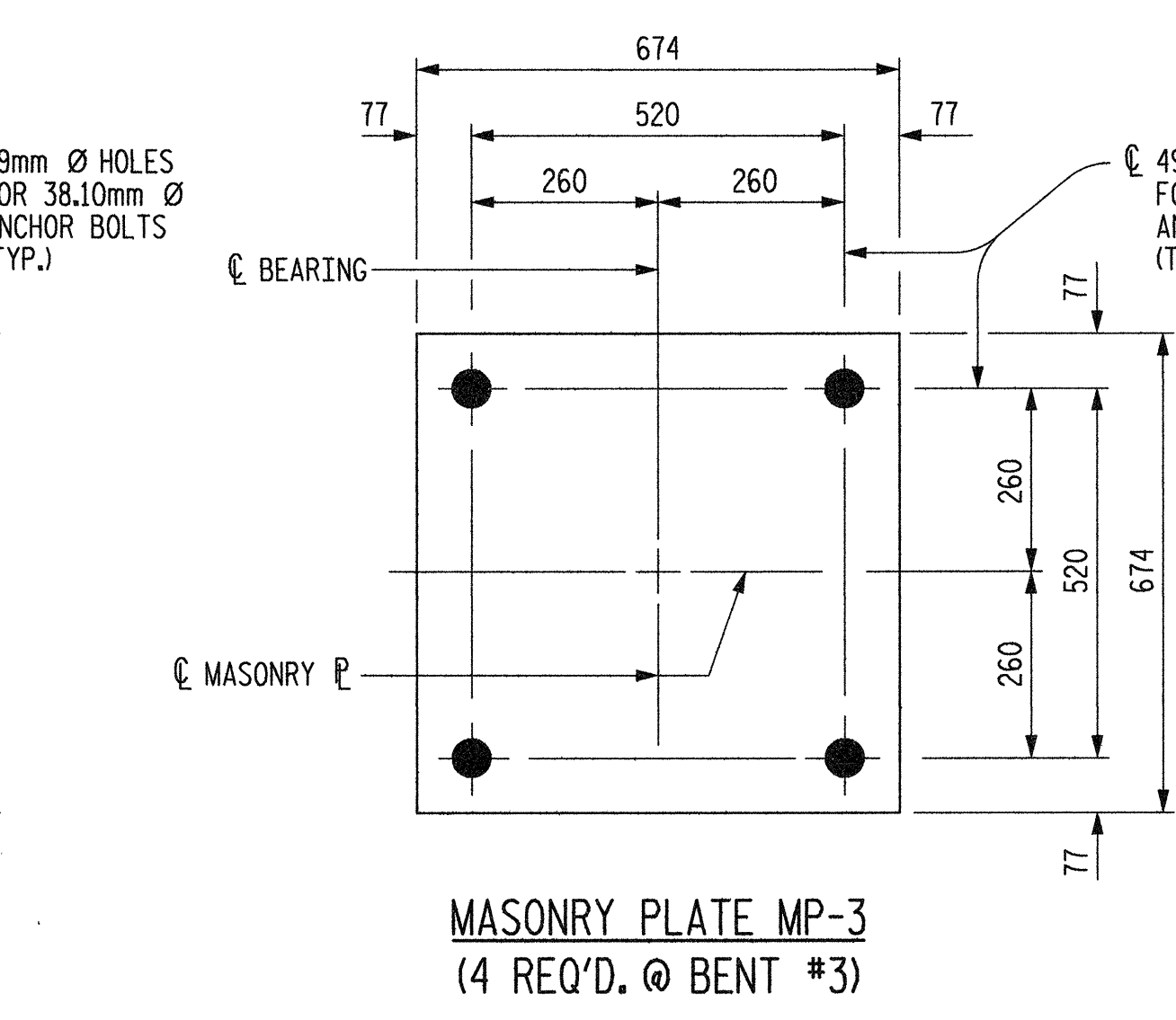
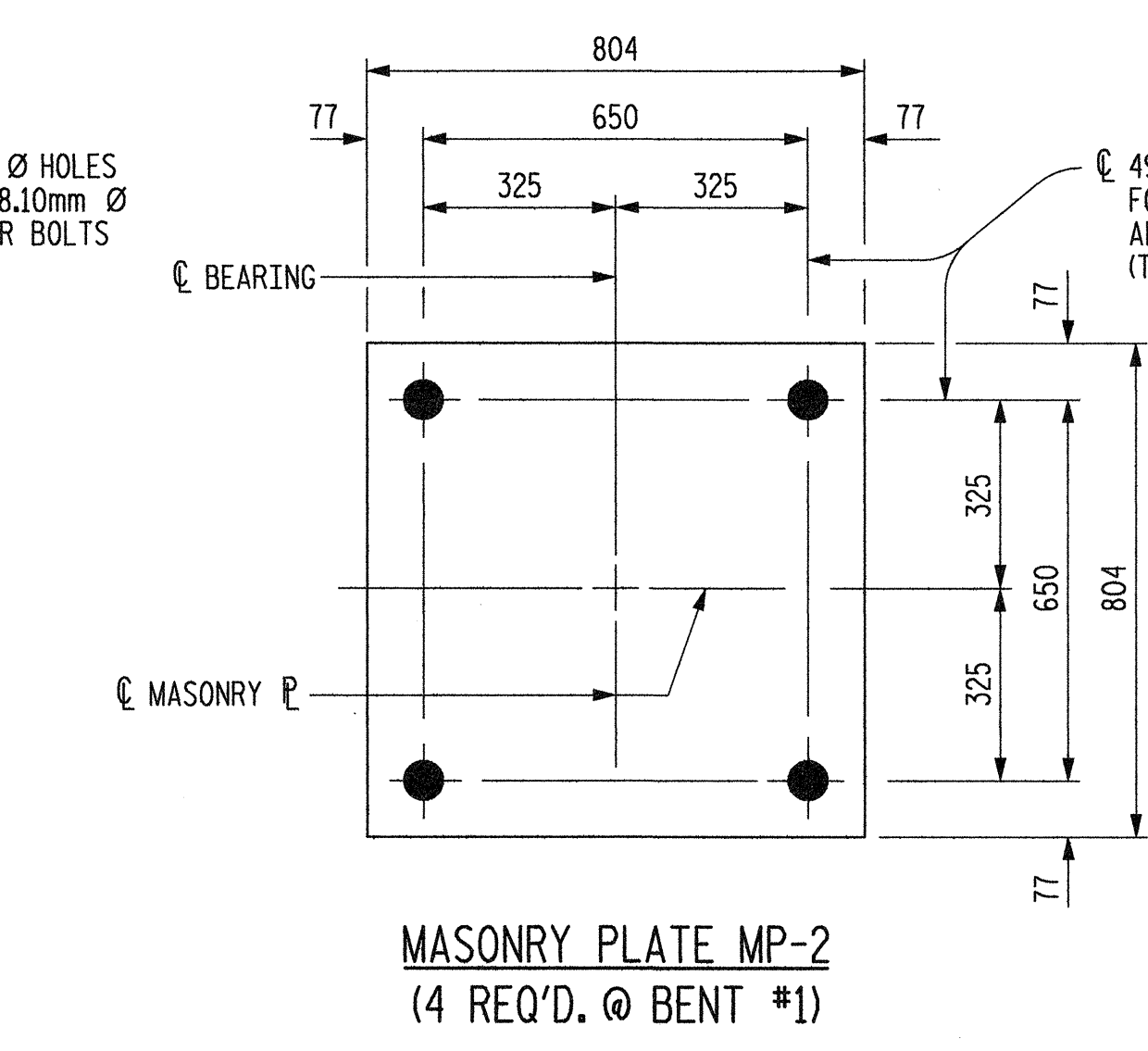
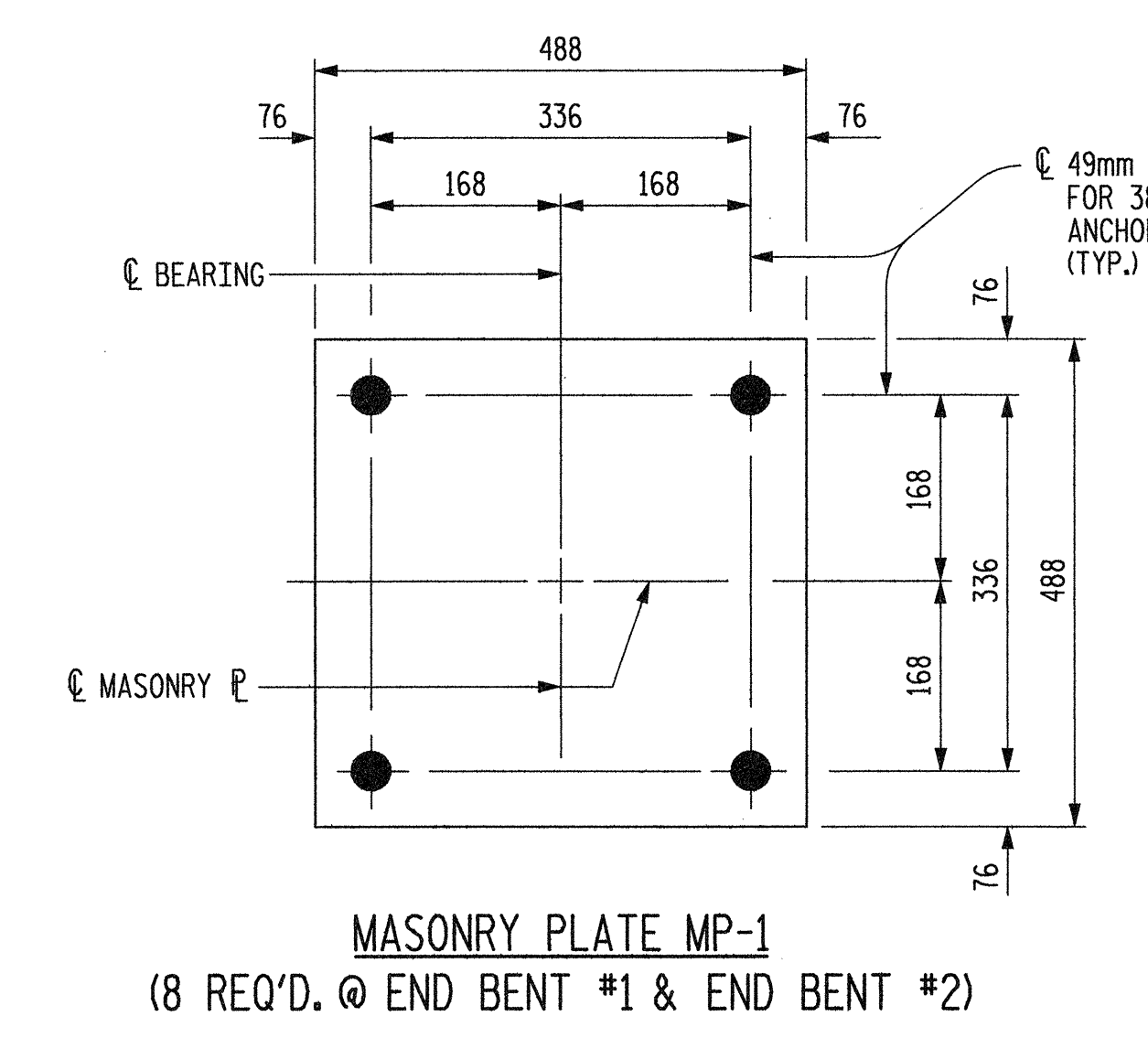
GIRDER	VERTICAL LOAD (kN)			LATERAL LOAD (kN)	TOTAL MOVEMENT (mm)
	DEAD	LIVE	TOTAL		
1	540	320	860	108	98
2	570	325	895	114	98
3	575	320	895	115	98
4	595	330	925	119	98

GIRDER	VERTICAL LOAD (kN)			LATERAL LOAD (kN)	TOTAL MOVEMENT (mm)
	DEAD	LIVE	TOTAL		
1	1685	700	2385	337	51
2	1765	740	2505	353	51
3	1720	670	2390	344	51
4	1770	710	2480	354	51

GIRDER	VERTICAL LOAD (kN)			LATERAL LOAD (kN)	TOTAL MOVEMENT (mm)
	DEAD	LIVE	TOTAL		
1	680	770	1450	145	54
2	2860	1365	4225	572	51
3	2720	1185	3905	544	48
4	790	745	1535	158	45

GIRDER	VERTICAL LOAD (kN)			LATERAL LOAD (kN)	TOTAL MOVEMENT (mm)
	DEAD	LIVE	TOTAL		
1	535	330	865	107	97
2	530	320	850	106	97
3	520	310	830	104	97
4	500	310	810	100	97

GIRDER	ANGLE "A"		ANGLE "B"	ANGLE "C"	
	END BENT #1	BENT #1	BENT #1	BENT #3	END BENT #2
1	88°04'27"	34°55'40"	35°58'31"	89°00'05"	88°05'26"
2	88°04'27"	34°52'09"	35°51'28"	89°00'05"	88°05'25"
3	88°04'26"	34°48'36"	35°44'22"	89°00'05"	88°05'25"
4	88°04'26"	34°45'02"	35°37'14"	89°00'05"	88°05'25"



MASONRY PLATE DETAILS

NOTES

FOR POT BEARINGS, SEE SPECIAL PROVISIONS.

AT ALL POINTS OF SUPPORT IN SPANS A, B, C AND D, NUTS FOR ANCHOR BOLTS SHALL BE TIGHTENED FINGER TIGHT AND GIVEN AN ADDITIONAL 1/4 TURN. THE THREAD OF THE NUT AND BOLT SHALL THEN BE BURIED WITH A SHARP POINTED TOOL.

WHEN WELDING THE SOLE PLATE TO THE GIRDER, USE TEMPERATURE INDICATING WAX PENS, OR OTHER SUITABLE MEANS, TO ENSURE THAT THE TEMPERATURE OF THE BEARING DOES NOT EXCEED 121°C. TEMPERATURES ABOVE THIS MAY DAMAGE THE TFE OR ELASTOMER.

AFTER BEARING ASSEMBLY IS IN PLACE AND ANCHOR BOLTS HAVE BEEN FINALLY POSITIONED, THEY SHALL BE GROUTED IN PLACE AS SHOWN.

THE CLOSURE PLATE, GROUT PIPE AND STANDARD PIPE FOR THIS ASSEMBLY NEED NOT BE GALVANIZED.

SOLE PLATES SHOULD BE WELDED TO GIRDER FLANGES AND ANCHOR BOLTS SHOULD BE GROUTED BEFORE FALSEWORK IS PLACED.

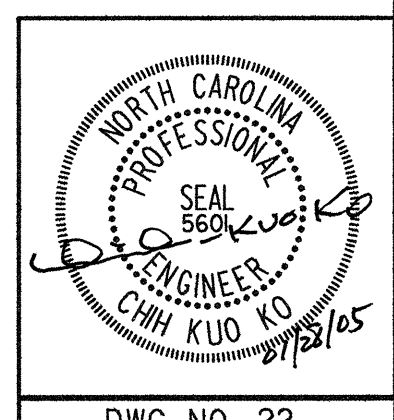
ALL SURFACES OF BEARING PLATES SHALL BE SMOOTH AND STRAIGHT.

FOR THERMAL SPRAYED COATINGS (METALLIZATION), SEE SPECIAL PROVISIONS.

THE CONTRACTOR MAY SUBSTITUTE DISC BEARINGS FOR THE POT BEARINGS SHOWN. FOR OPTIONAL DISC BEARINGS, SEE SPECIAL PROVISIONS.

DRAWN BY: B.E. LANNING DATE: JAN. 2005
 CHECKED BY: J.C. KO / A.K. ORR DATE: JAN. 2005

Plans prepared by:
KO & ASSOCIATES, P.C.
 Consulting Engineers
 101 SCHAUER DR. SUITE #202
 RALEIGH, N.C. 27606
 For Division of Highways



PROJECT NO. R-2552AA
WAKE-JOHNSTON COUNTY
 STATION: 27+51.601 -I1Y1-

SHEET 1 OF 2

STATE OF NORTH CAROLINA DEPARTMENT OF TRANSPORTATION RALEIGH					
SUPERSTRUCTURE POT BEARING DETAILS					
REVISIONS					SHEET NO.
NO.	BY:	DATE:	NO.	BY:	DATE:
1			3		
2			4		
DWG. NO. 22					5-58 TOTAL SHEETS 429

PLOT: 01/28/2005 07:25:44 AM Ko & Associates, P.C.
 FILE NAME: r:\2552aa-and-fig1-02.dwg