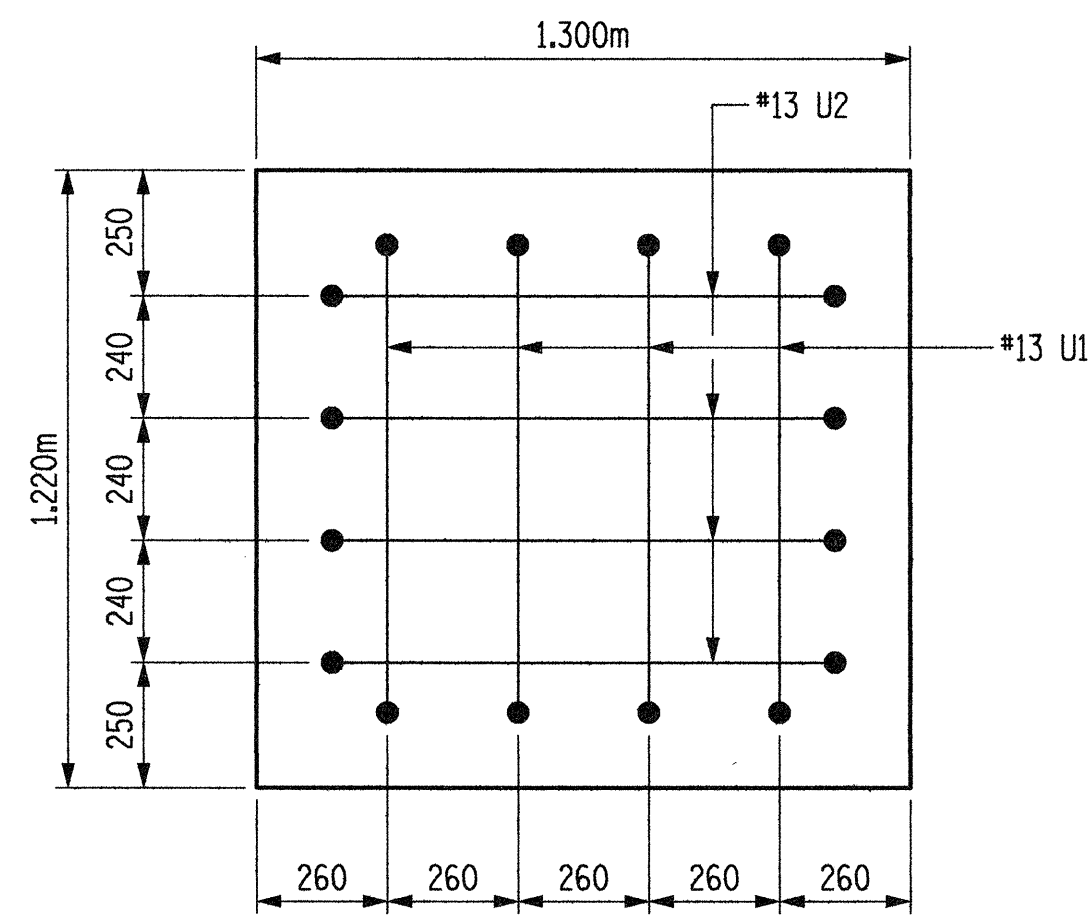
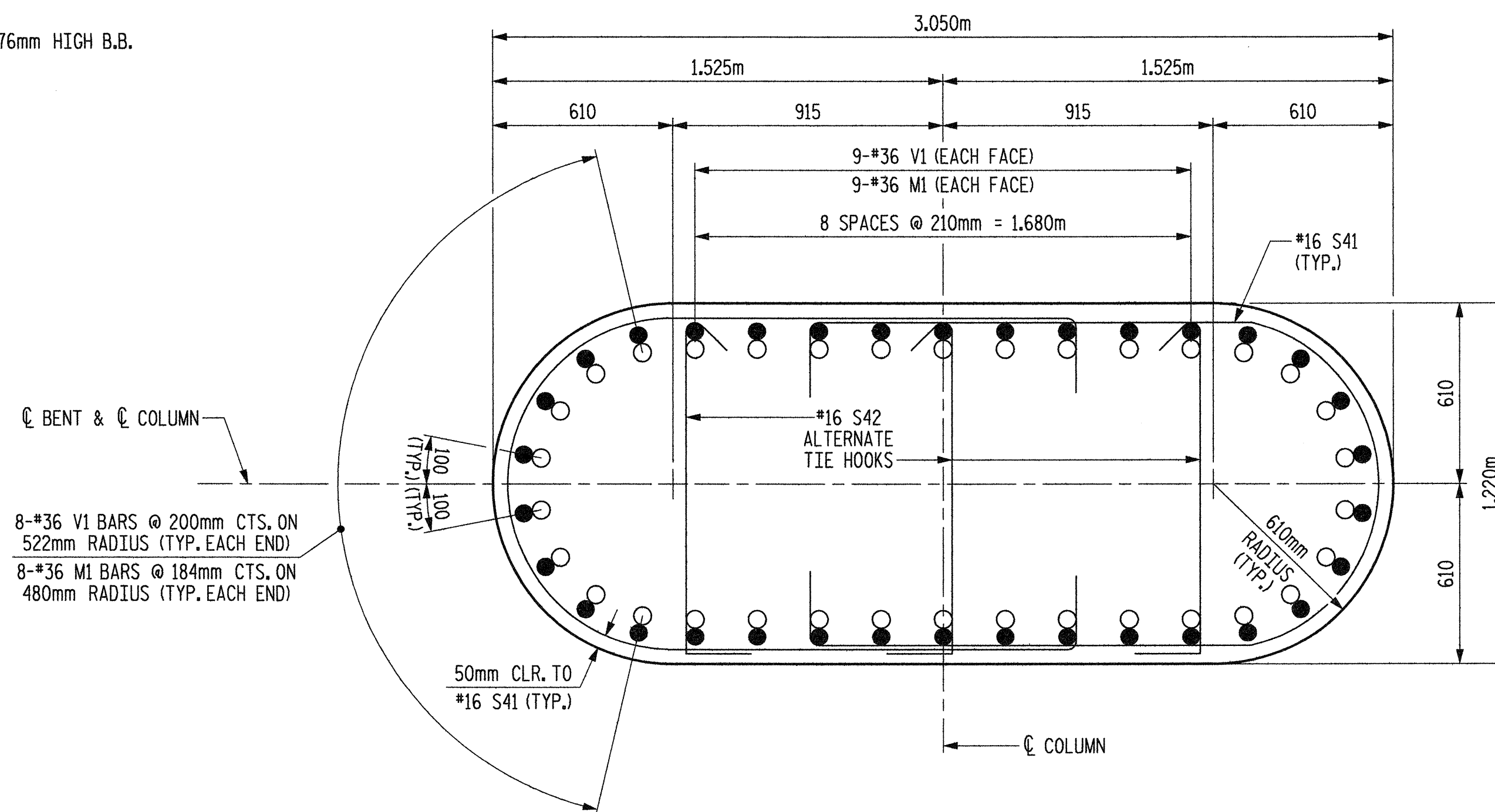


SECTION A-A



VIEW B-B



SECTION C-C

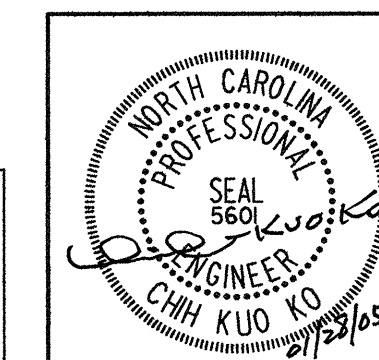
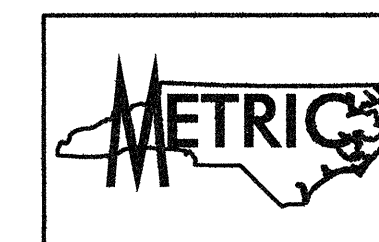
○ #36 M1  
● #36 V1

PROJECT NO. R-2552AA  
WAKE-JOHNSTON COUNTY  
STATION: 27+51.601 -I1Y1-

SHEET 2 OF 3

STATE OF NORTH CAROLINA  
DEPARTMENT OF TRANSPORTATION  
RALEIGH

SUBSTRUCTURE  
BENT #2



Plans prepared by:  
**KO & ASSOCIATES, P.C.**  
Consulting Engineers  
1011 SCHAU DR., SUITE #202  
RALEIGH, N.C. 27606  
For Division of Highways

REVISIONS					
NO.	BY:	DATE:	NO.	BY:	DATE:
1			3		
2			4		

SHEET NO.	
5-71	TOTAL SHEETS
429	

DWG. NO. 35

PLOT: 01/29/2005 07:54:38 AM Ko & Associates, P.C.  
FILE NAME: r12552aa.dwg, 82.dgn

DRAWN BY: B.E. LANNING DATE: JAN. 2005  
CHECKED BY: J.C. KO / A.K. ORR DATE: JAN. 2005