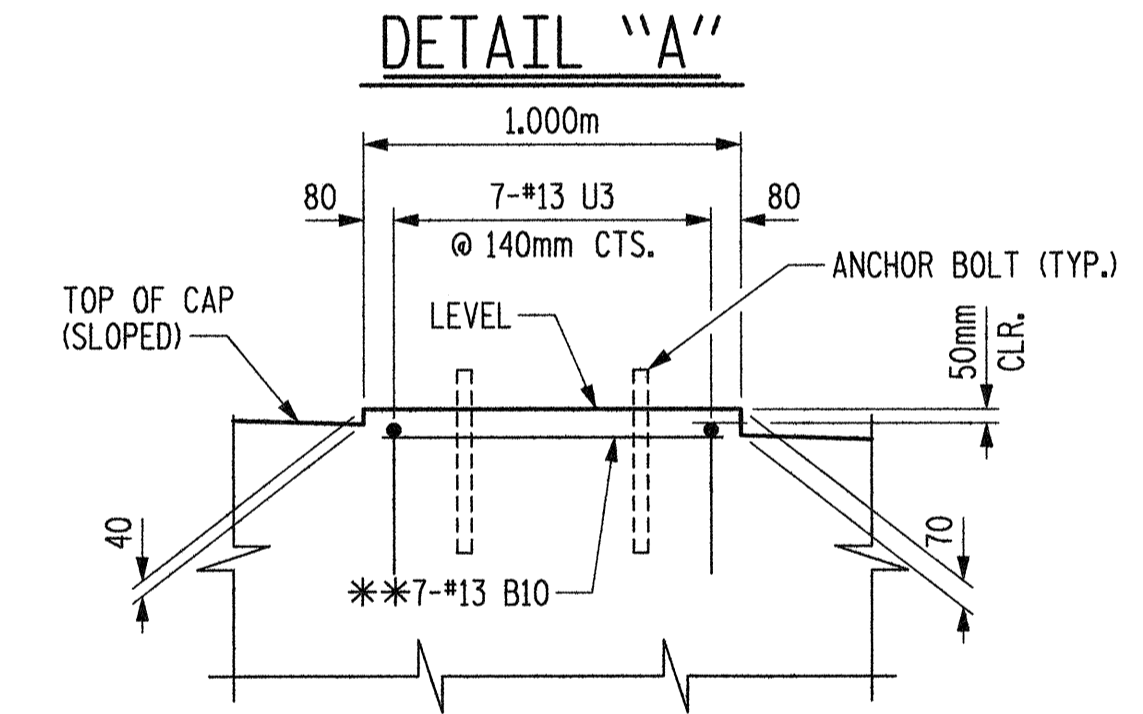
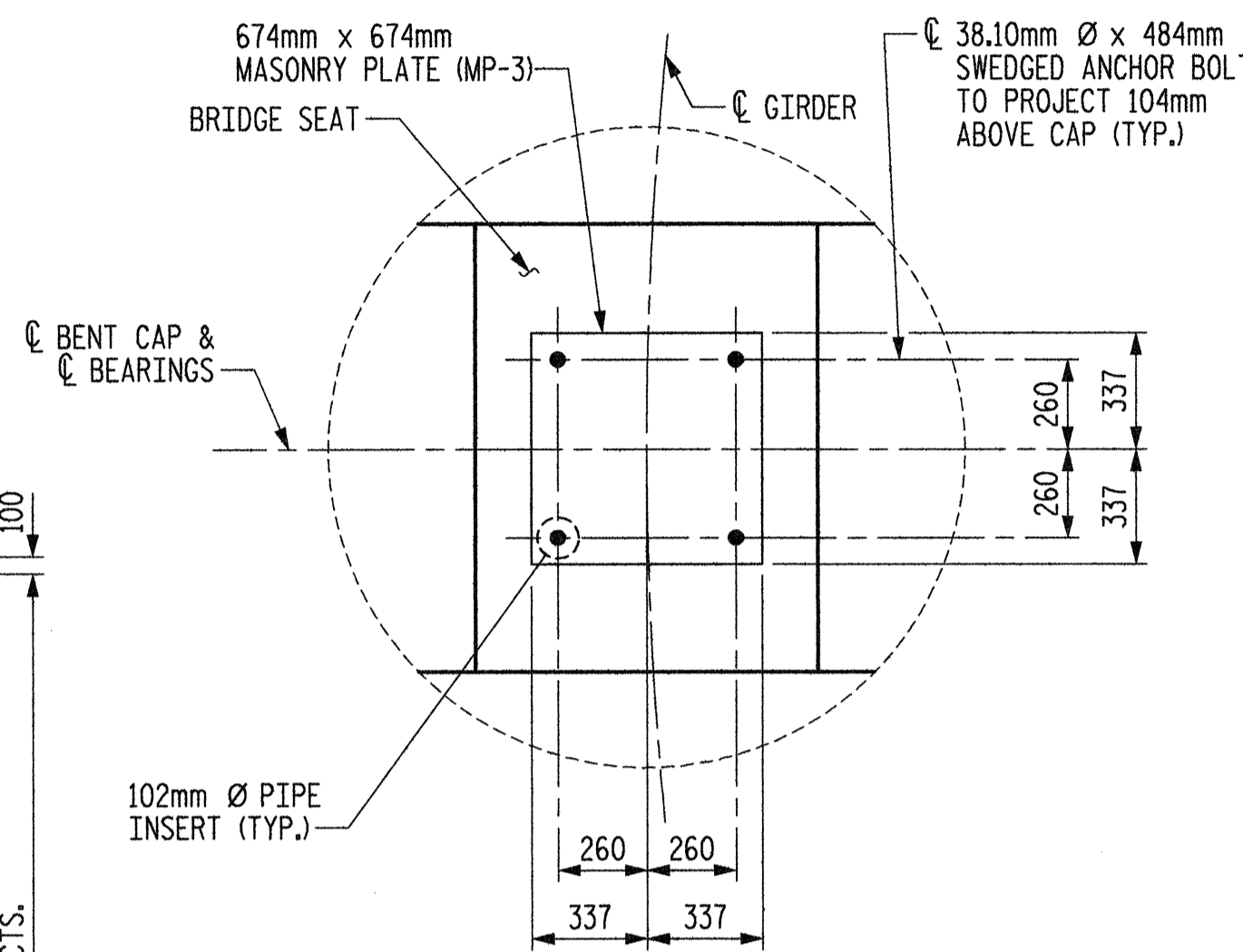


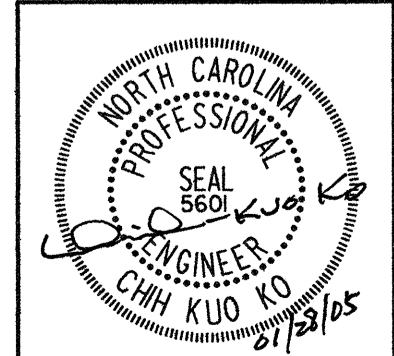
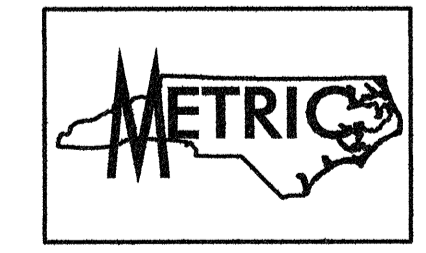
NOTES:
 STIRRUPS IN CAP MAY BE SHIFTED AS NECESSARY TO CLEAR ANCHOR BOLTS.
 PILES SHALL BE DRIVEN TO A MINIMUM BEARING CAPACITY OF 530 KN EACH.
 FOR PILE SPLICE DETAILS, SEE "SUBSTRUCTURE END BENT #1", SHEET 3 OF 3.
 WHEN DRIVING PILES, THE MAXIMUM BLOW COUNT SHALL NOT BE EXCEEDED
 DETAILED DRAWINGS FOR FALSEWORK AND FORMS FOR THIS HAMMERHEAD BENT SHALL BE SUBMITTED FOR BENT CAP. SEE SHEET SNSM AND SPECIAL PROVISIONS.
 FOR OTHER NOTES, SEE "GENERAL NOTES AND TOTAL BILL OF MATERIAL" SHEET.
 FOR SECTION A-A, END VIEW B-B AND SECTION C-C, SEE SHEET 2 OF 3.



DETAIL "B"
 **7-#13 B10 BARS SHALL BE PLACED IN LINE WITH THE 7-#36 B1 BARS.

PROJECT NO. R-2552AA
 WAKE-JOHNSTON COUNTY
 STATION: 27+51.601 -I1Y1-

SHEET 1 OF 3



STATE OF NORTH CAROLINA
 DEPARTMENT OF TRANSPORTATION
 RALEIGH

SUBSTRUCTURE
 BENT #3

REVISIONS					SHEET NO.
NO.	BY:	DATE:	NO.	BY:	DATE:
1			3		
2			4		

5-73
 TOTAL SHEETS
 429

Plans prepared by:
KO & ASSOCIATES, P.C.
 Consulting Engineers
 101 SCHAUER DR., SUITE #202
 RALEIGH, N.C. 27606
 For Division of Highways

1 TIE SET = 2-#16 S49 & 3-#16 S50

PLOT: 01/29/2005 07:55:07 AM Ko & Associates, P.C.
 FILE NAME: r125252aa.dwg, 82.dgn

DRAWN BY: B.E. LANNING DATE: JAN. 2005
 CHECKED BY: J.C. KO / A.K. ORR DATE: JAN. 2005