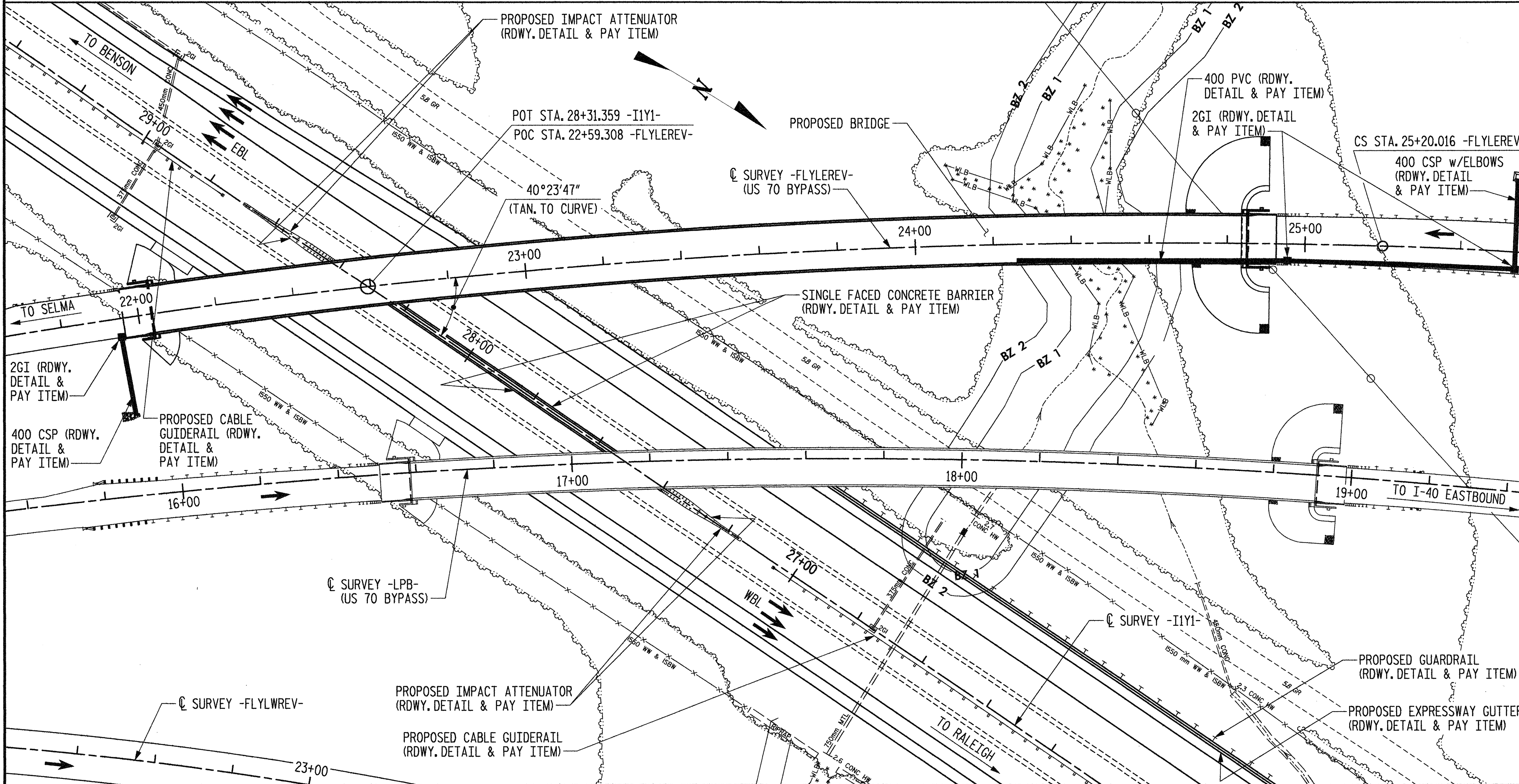


B.M. #R-2552-8: 760mm REBAR WITH NCDOT TRAVERSE STAMPED WITH BM NUMBER, 1.166m LEFT OF STA. 27+40.737 -I1Y1-; EL. 84.103.



LOCATION SKETCH

NOTE: NO KNOWN UTILITY CONFLICTS.

NOTES

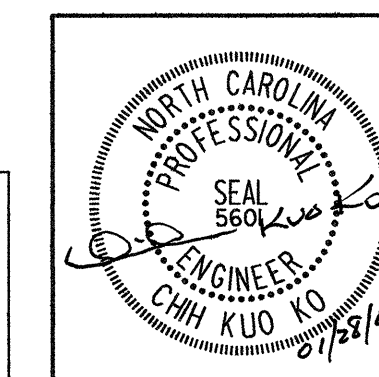
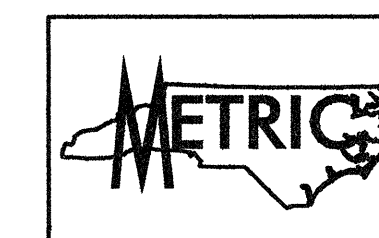
- ALL DIMENSIONS ARE IN MILLIMETERS UNLESS OTHERWISE NOTED.
- ALL ELEVATIONS ARE IN METERS.
- ASSUMED LIVE LOAD = MS 18 OR ALTERNATE LOADING.
- FOR OTHER DESIGN DATA AND GENERAL NOTES, SEE SHEET SNSM.
- THIS BRIDGE HAS BEEN DESIGNED BY THE STRENGTH DESIGN METHOD AS SPECIFIED IN AASHTO SPECIFICATIONS.
- THIS BRIDGE HAS BEEN DESIGNED IN ACCORDANCE WITH THE REQUIREMENTS OF THE "STANDARD SPECIFICATIONS FOR SEISMIC DESIGN OF HIGHWAY BRIDGES FOR SEISMIC PERFORMANCE CATEGORY A".
- ALL STRUCTURAL STEEL SHALL BE AASHTO M270 GRADE 345W AND PAINTED IN ACCORDANCE WITH SYSTEM 4 OF ARTICLE 442-7 OF THE STANDARD SPECIFICATIONS UNLESS OTHERWISE NOTED ON THE PLANS.
- FOR MAINTENANCE AND PROTECTION OF TRAFFIC BENEATH PROPOSED STRUCTURE, SEE SPECIAL PROVISIONS.
- FOR FALSEWORK AND FORMWORK, SEE SPECIAL PROVISIONS.
- FOR FALSEWORK AND FORMS OVER OR ADJACENT TO TRAFFIC, SEE SPECIAL PROVISIONS.
- FOR EROSION CONTROL MEASURES, SEE EROSION CONTROL PLANS.
- FOR SUBMITTAL OF WORKING DRAWING, SEE SPECIAL PROVISIONS.
- FOR METRIC STRUCTURAL STEEL, SEE SPECIAL PROVISIONS.
- NEEDLE BEAMS WILL NOT BE ALLOWED UNLESS OTHERWISE CALLED FOR ON THE PLANS OR APPROVED BY THE ENGINEER.
- PILES FOR END BENTS #1 AND #2 SHALL BE DRIVEN TO A MINIMUM BEARING CAPACITY OF 530 KN EACH.
- PILES FOR INTERIOR BENTS #1, #2, #3 AND #4 SHALL BE DRIVEN TO A MINIMUM BEARING CAPACITY OF 530 KN EACH.
- WHEN DRIVING PILES, THE MAXIMUM BLOW COUNT SHALL NOT BE EXCEEDED.
- THE CLASS AA CONCRETE IN THE BRIDGE DECK SHALL CONTAIN FLY ASH OR GROUND GRANULATED BLAST FURNACE SLAG AT THE SUBSTITUTION RATE SPECIFIED IN ARTICLE 1024-1 AND IN ACCORDANCE WITH ARTICLES 1024-5 AND 1024-6 OF THE STANDARD SPECIFICATIONS. NO ADDITIONAL PAYMENT WILL BE MADE FOR THIS SUBSTITUTION AS IT IS CONSIDERED INCIDENTAL TO THE COST OF THE REINFORCED CONCRETE DECK SLAB.
- REMOVABLE FORMS MAY BE USED IN LIEU OF METAL STAY-IN-PLACE FORMS IN ACCORDANCE WITH ARTICLES 420-3 OF THE STANDARD SPECIFICATIONS.
- FOR LIMITS OF TEMPORARY SHORING FOR MAINTENANCE OF TRAFFIC, SEE TRAFFIC CONTROL PLANS. FOR PAY ITEM FOR TEMPORARY SHORING FOR MAINTENANCE OF TRAFFIC, SEE ROADWAY PLANS.
- FOR CRANE SAFETY, SEE SPECIAL PROVISIONS.
- FOR MASS CONCRETE AT BENT #4, SEE SPECIAL PROVISIONS.

TOTAL BILL OF MATERIAL

	FOUNDATION EXCAVATION	REINFORCED CONCRETE DECK SLAB	GROOVING BRIDGE FLOORS	CLASS "A" CONCRETE	BRIDGE APPROACH SLABS	REINFORCING STEEL	STRUCTURAL STEEL	HP 310 X 79 STEEL PILES		CONCRETE BARRIER RAIL	100mm SLOPE PROTECTION	PLAIN RIP RAP CLASS II (600mm THICK)	FILTER FABRIC FOR DRAINAGE	POT BEARINGS	MODULAR EXPANSION JOINT SEALS	STRUCTURE DRAINAGE SYSTEM
	LUMP SUM	SQ. M	SQ. M	CU. M	LUMP SUM	kg	APPROX. kg	NO.	M	M	SQ. M.	METRIC TONS	SQ. M.	LUMP SUM	LUMP SUM	LUMP SUM
SUPERSTRUCTURE		3656.6	3281.5				806900			562,980				LUMP SUM	LUMP SUM	LUMP SUM
END BENT #1				38.2	LUMP SUM	3016		13	189.0		245					
BENT #1	LUMP SUM			152.6		14610		36	342.0							
BENT #2	LUMP SUM			128.3		13738		35	420.0							
BENT #3	LUMP SUM			129.4		13887		35	315.0							
BENT #4	LUMP SUM			157.4		17909		40	252.0							
END BENT #2				41.5	LUMP SUM	3584		16	216.0			825	850			
TOTAL	LUMP SUM	3656.6	3281.5	647.4	LUMP SUM	66744	806900	175	1734.0	562,980	245	825	850	LUMP SUM	LUMP SUM	LUMP SUM

PROJECT NO. R-2552AA  
WAKE-JOHNSTON COUNTY  
 STATION: 28+31.359 -I1Y1-

SHEET 5 OF 5



Plans prepared by:  
**KO & ASSOCIATES, P.C.**  
 Consulting Engineers  
 101 SCHUB DR. SUITE #202  
 RALEIGH, N.C. 27606  
 For Division of Highways

STATE OF NORTH CAROLINA  
 DEPARTMENT OF TRANSPORTATION  
 RALEIGH  
 GENERAL DRAWING  
 FOR BRIDGE ON  
 FLYOVER EAST (US 70 BYPASS)  
 OVER EXISTING I-40  
 BETWEEN SR 1525 (CORNWALLIS ROAD)  
 AND SR 2703 (NEW BETHEL ROAD)

REVISIONS						SHEET NO.
NO.	BY:	DATE:	NO.	BY:	DATE:	TOTAL SHEETS
1			3			5-28
2			4			429

DWG. NO. 5

PLOT: 01/27/2005 02:55:26 PM Ko & Associates, P.C.  
 FILE NAME: r1v2552aa.dwg

DRAWN BY: B.E. LANNING DATE: JAN. 2005  
 CHECKED BY: J.C. KO DATE: JAN. 2005