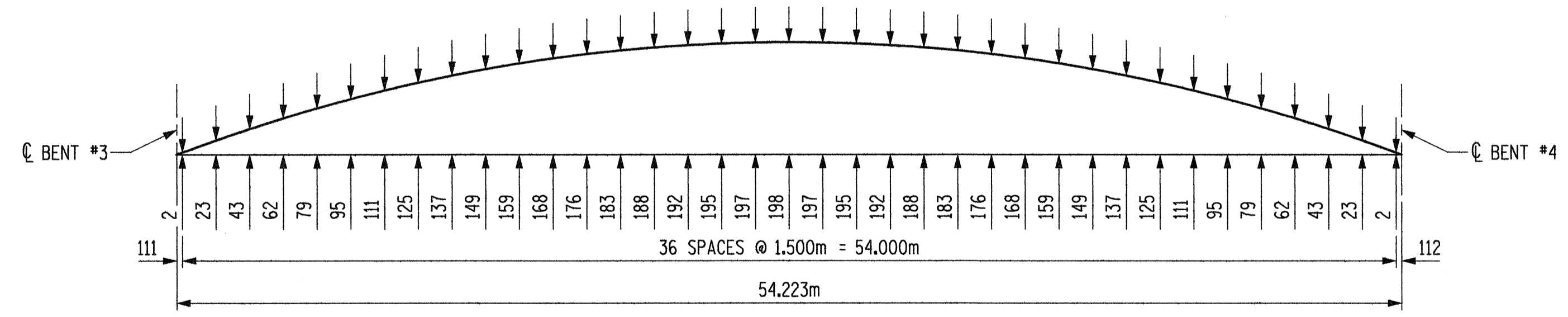


\* NORMAL OR RADIAL TO  $\phi$  SURVEY -FLYLEREV-

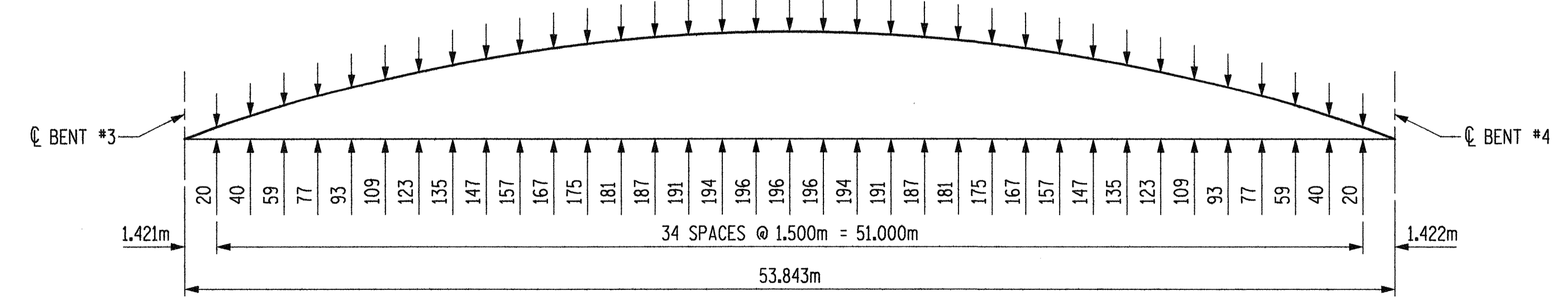
⊕ INDICATES POUR NUMBER AND DIRECTION OF POUR

PLAN OF SPAN "D"

▲ ARC LENGTH MEASURED ALONG  $\phi$  SURVEY -FLYLEREV-



SPAN "D" - LEFT SIDE



SPAN "D" - RIGHT SIDE

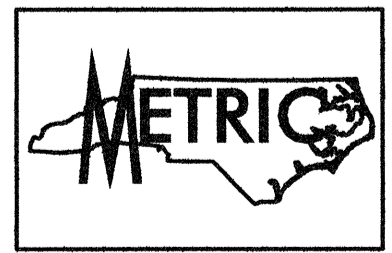
ARC OFFSETS - OUTSIDE EDGE OF DECK

NOTES

- TRANSVERSE REINFORCING STEEL SHALL BE PLACED NORMAL OR RADIAL TO  $\phi$  SURVEY -FLYLEREV-, UNLESS OTHERWISE NOTED.
- FOR REINFORCING STEEL IN BARRIER RAIL NOT SHOWN, SEE "STANDARD CONCRETE BARRIER RAIL" SHEET.
- FOR CONTINUATION OF REINFORCING STEEL, SEE SUPERSTRUCTURE PLAN OF SPAN "A", SUPERSTRUCTURE PLAN OF SPAN "B", SUPERSTRUCTURE PLAN OF SPAN "C" AND SUPERSTRUCTURE PLAN OF SPAN "E".
- FOR TRANSVERSE CONSTRUCTION JOINT IN DECK SLAB DETAIL, SEE SUPERSTRUCTURE "TYPICAL SECTION AND DETAILS", SHEET 2 OF 2.
- REINFORCING STEEL AND STIRRUPS MAY BE SHIFTED SLIGHTLY AS NECESSARY TO CLEAR PIPE DRAINS.
- FOR TOP AND BOTTOM "B" BAR NOT SHOWN, SEE SUPERSTRUCTURE "B" BAR LAYOUT SHEET.

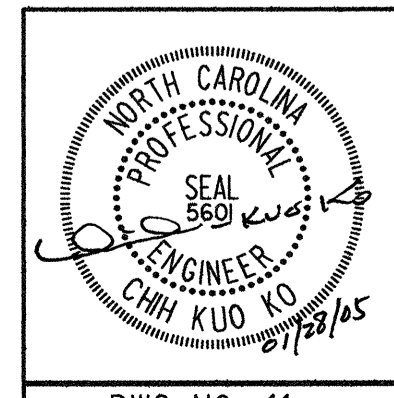
PROJECT NO. R-2552AA  
WAKE-JOHNSTON COUNTY  
 STATION: 28+31.359 -I1Y1-

SHEET 4 OF 5



STATE OF NORTH CAROLINA  
 DEPARTMENT OF TRANSPORTATION  
 RALEIGH

SUPERSTRUCTURE  
 PLAN OF SPAN "D"



Plans prepared by:  
**KO & ASSOCIATES, P.C.**  
 Consulting Engineers  
 1011 SCHAUH DR., SUITE #202  
 RALEIGH, N.C. 27606  
 For Division of Highways

REVISIONS						SHEET NO.
NO.	BY:	DATE:	NO.	BY:	DATE:	TOTAL SHEETS
1			3			5-94
2			4			429

DWG. NO. 11

PLOT: 01/27/2005 09:56:37 PM Ko & Associates, P.C.  
 FILE NAME: r:\v2552aa\_s4.dwg

DRAWN BY: B.E. LANNING DATE: JAN. 2005  
 CHECKED BY: J.C. KO / A.K. ORR DATE: JAN. 2005