

\* NORMAL OR RADIAL TO C SURVEY -FLYLEREV-  
 # INDICATES POUR NUMBER AND DIRECTION OF POUR

**NOTES**

TRANSVERSE REINFORCING STEEL SHALL BE PLACED NORMAL OR RADIAL TO C SURVEY -FLYLEREV-, UNLESS OTHERWISE NOTED.

FOR REINFORCING STEEL IN BARRIER RAIL NOT SHOWN, SEE "STANDARD CONCRETE BARRIER RAIL" SHEET.

FOR CONTINUATION OF REINFORCING STEEL, SEE SUPERSTRUCTURE PLAN OF SPAN "A", SUPERSTRUCTURE PLAN OF SPAN "B", SUPERSTRUCTURE PLAN OF SPAN "C" AND SUPERSTRUCTURE PLAN OF SPAN "D".

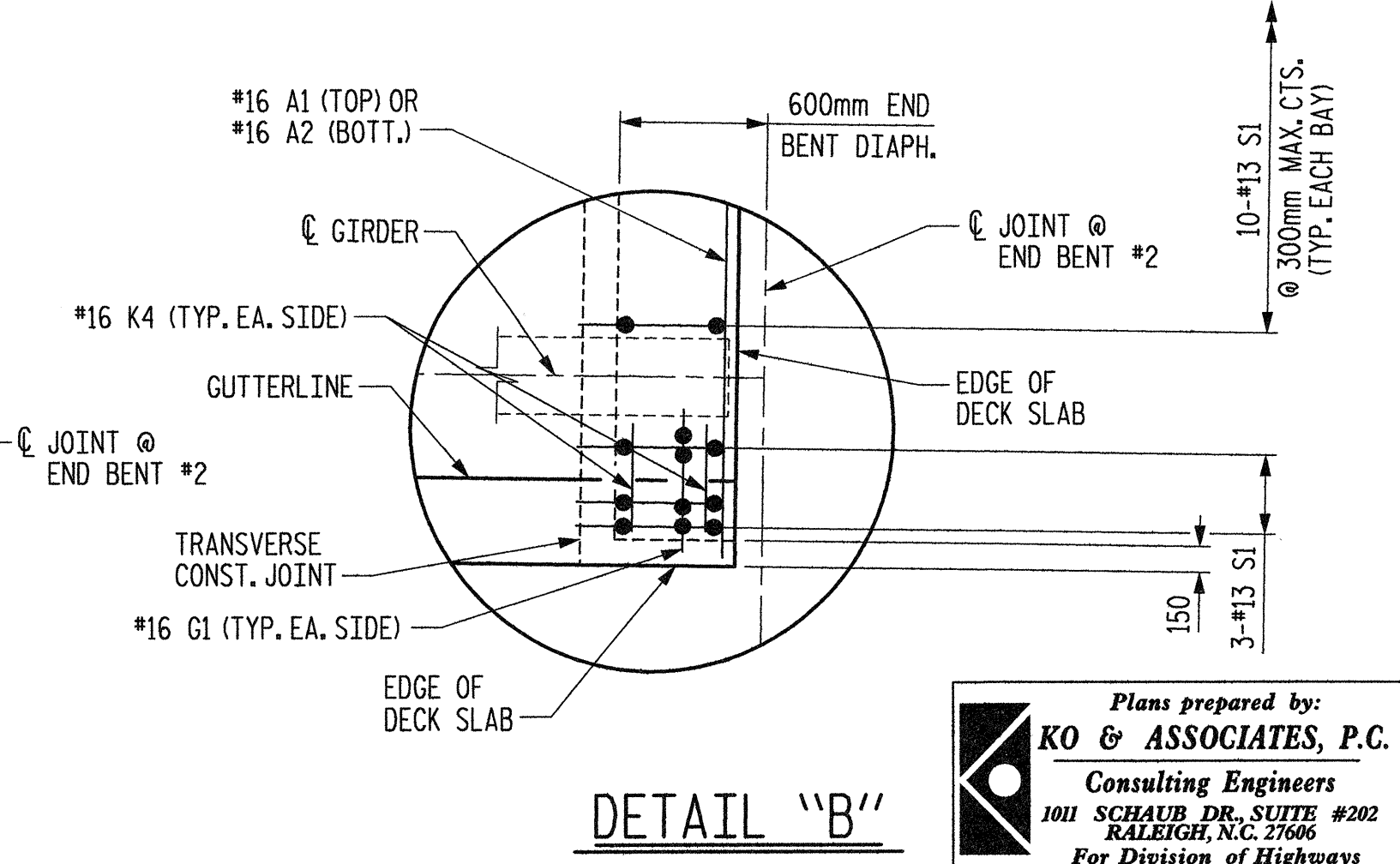
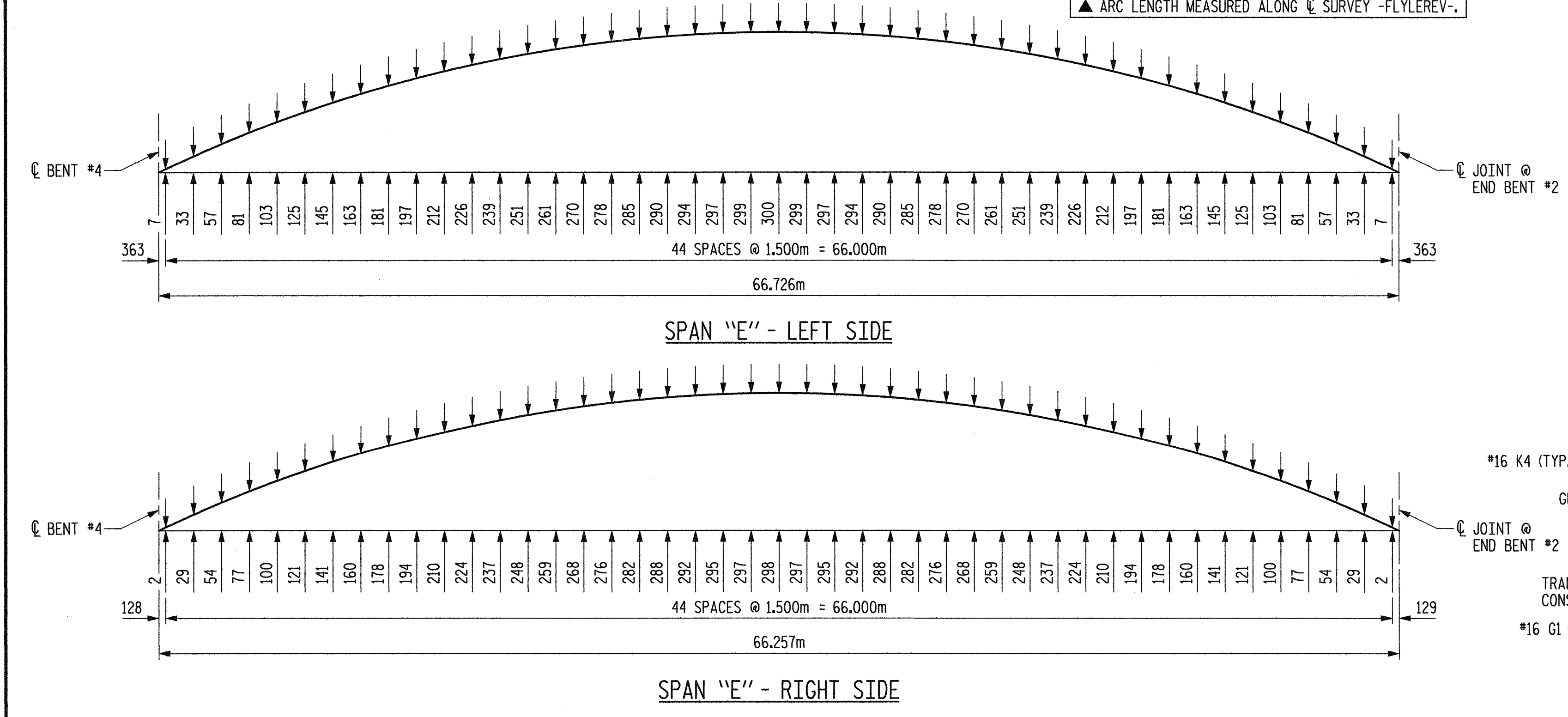
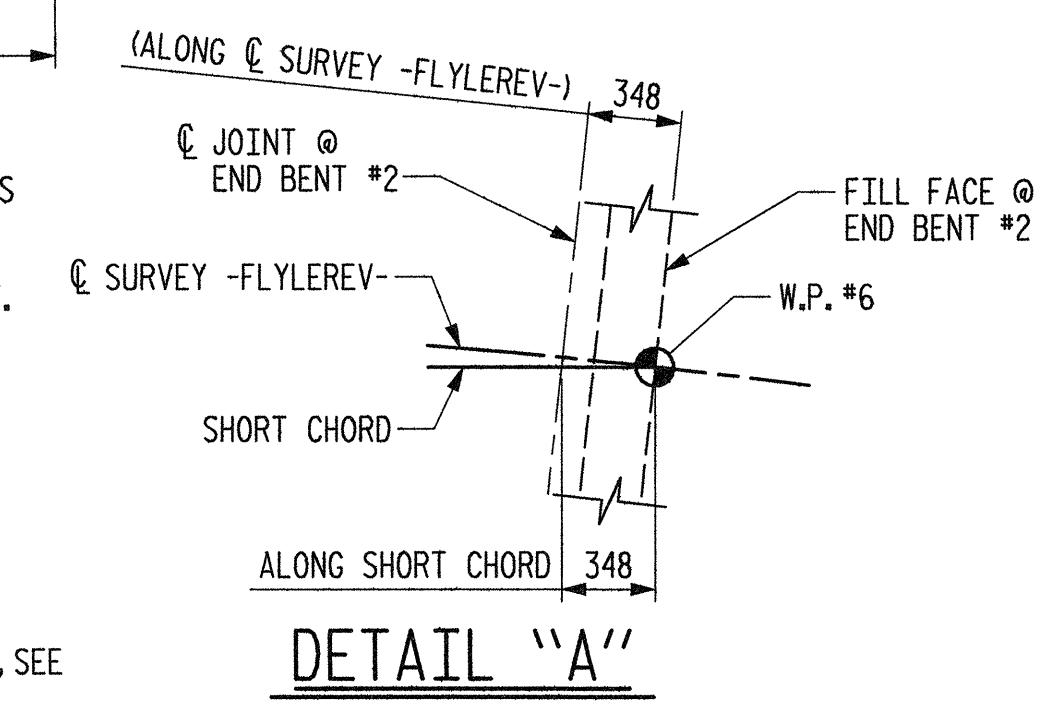
FOR TRANSVERSE CONSTRUCTION JOINT IN DECK SLAB DETAIL, SEE SUPERSTRUCTURE "TYPICAL SECTION AND DETAILS", SHEET 2 OF 2.

REINFORCING STEEL AND STIRRUPS MAY BE SHIFTED SLIGHTLY AS NECESSARY TO CLEAR PIPE DRAINS.

THE 152mm Ø PVC PIPE DRAINS ARE TO DRAIN INTO A CLOSED BRIDGE DRAINAGE SYSTEM. FOR DETAILS, SEE "STRUCTURE DRAINAGE SYSTEM DETAILS".

THE "S" BARS IN THE DECK MAY BE SHIFTED SLIGHTLY TO CLEAR THE MODULAR JOINT SUPPORT BOXES.

FOR TOP AND BOTTOM "B" BARS NOT SHOWN, SEE SUPERSTRUCTURE "B" BAR LAYOUT SHEET.



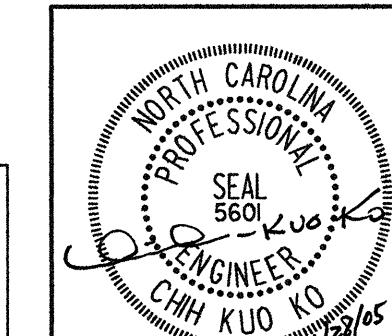
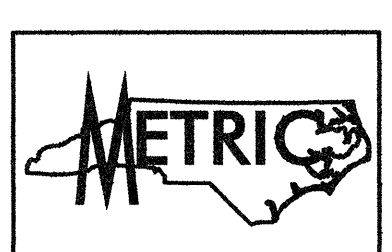
PROJECT NO. R-2552AA  
 WAKE-JOHNSTON COUNTY  
 STATION: 28+31.359 -I1Y1-

SHEET 5 OF 5

STATE OF NORTH CAROLINA  
 DEPARTMENT OF TRANSPORTATION  
 RALEIGH

SUPERSTRUCTURE  
 PLAN OF SPAN "E"

| REVISIONS |     |       |     |     |       | SHEET NO.    |
|-----------|-----|-------|-----|-----|-------|--------------|
| NO.       | BY: | DATE: | NO. | BY: | DATE: | TOTAL SHEETS |
| 1         |     |       | 3   |     |       | 5-95         |
| 2         |     |       | 4   |     |       | 429          |



Plans prepared by:  
**KO & ASSOCIATES, P.C.**  
 Consulting Engineers  
 1011 SCHAUB DR., SUITE #202  
 RALEIGH, N.C. 27606  
 For Division of Highways