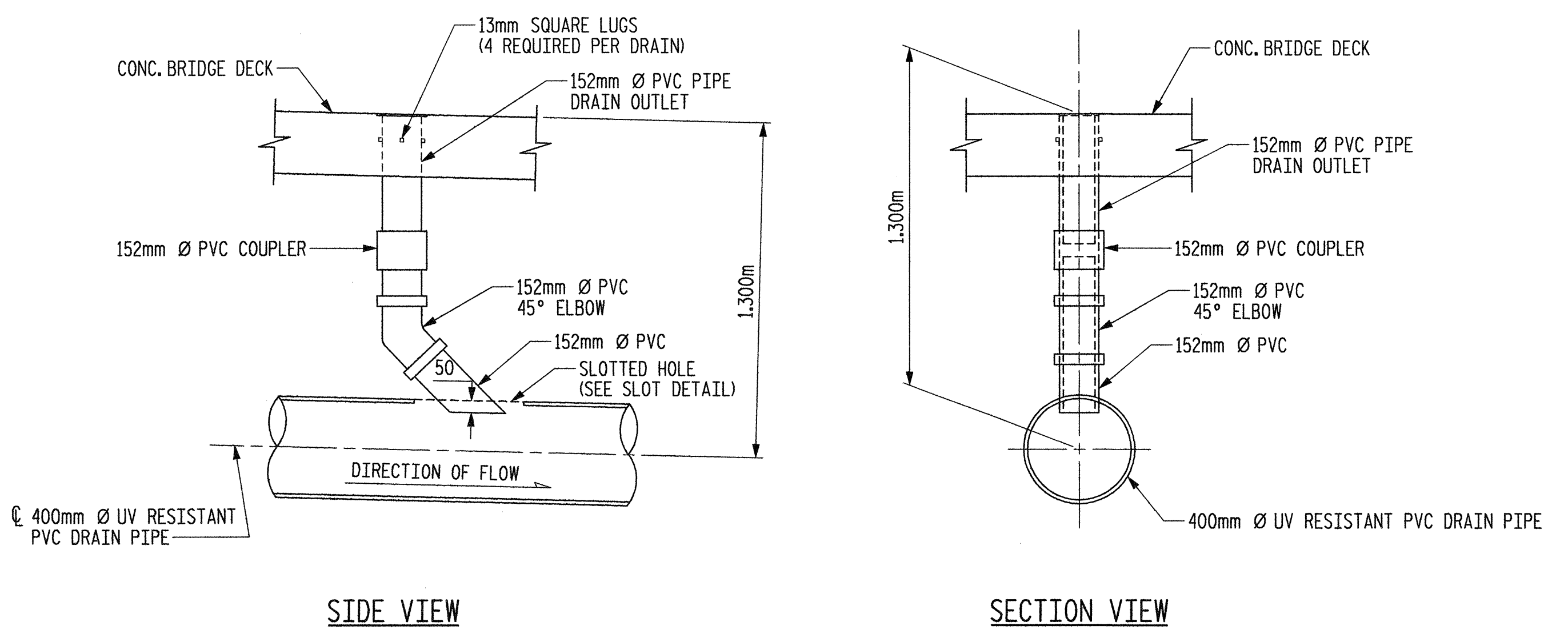
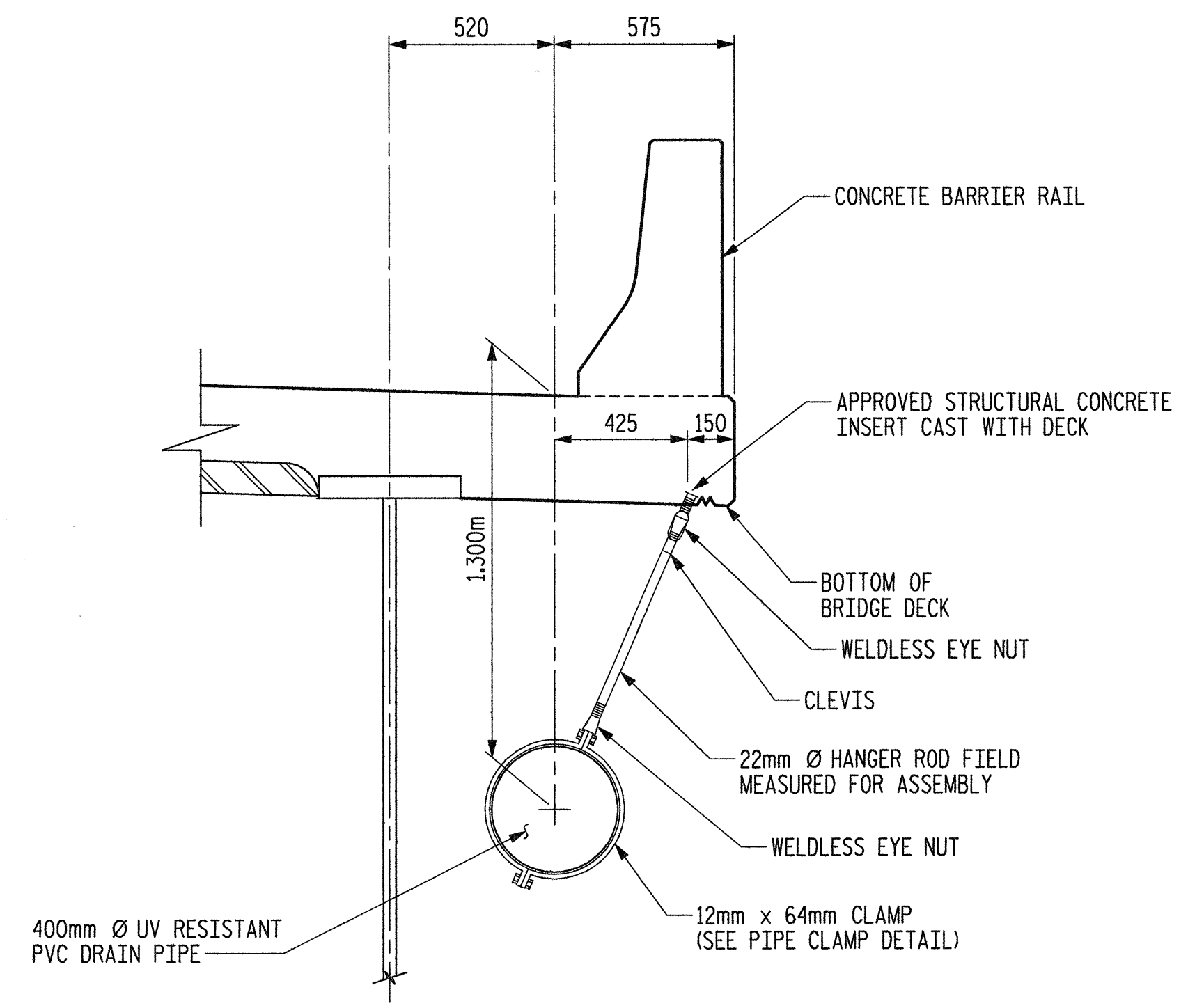


DRAIN CONNECTOR DETAIL
(TOTAL ASSEMBLIES REQUIRED = 30)

COUPLING IN DRAIN PIPE WILL BE PERMITTED AS APPROVED BY THE ENGINEER.
TOP OF THE FLOOR DRAIN TO BE SET 10mm BELOW SURFACE OF SLAB.
4-13mm SQUARE LUGS TO BE GLUED TO THE PVC PLASTIC PIPE AT EQUAL SPACES AROUND THE PIPE DRAIN APPROXIMATELY 100mm FROM THE TOP OF THE PIPE.
BOLT SIZE TO BE THE SAME AS DIAPHRAGMS AND CROSS FRAME CONNECTIONS. STAINLESS STEEL WORM DRIVE HOSE CLAMP SHALL BE COMMERCIAL QUALITY.
THE 152mm Ø PVC PLASTIC PIPE AND FITTINGS SHALL BE SCHEDULE 40 AND CONFORM TO ASTM D1785.

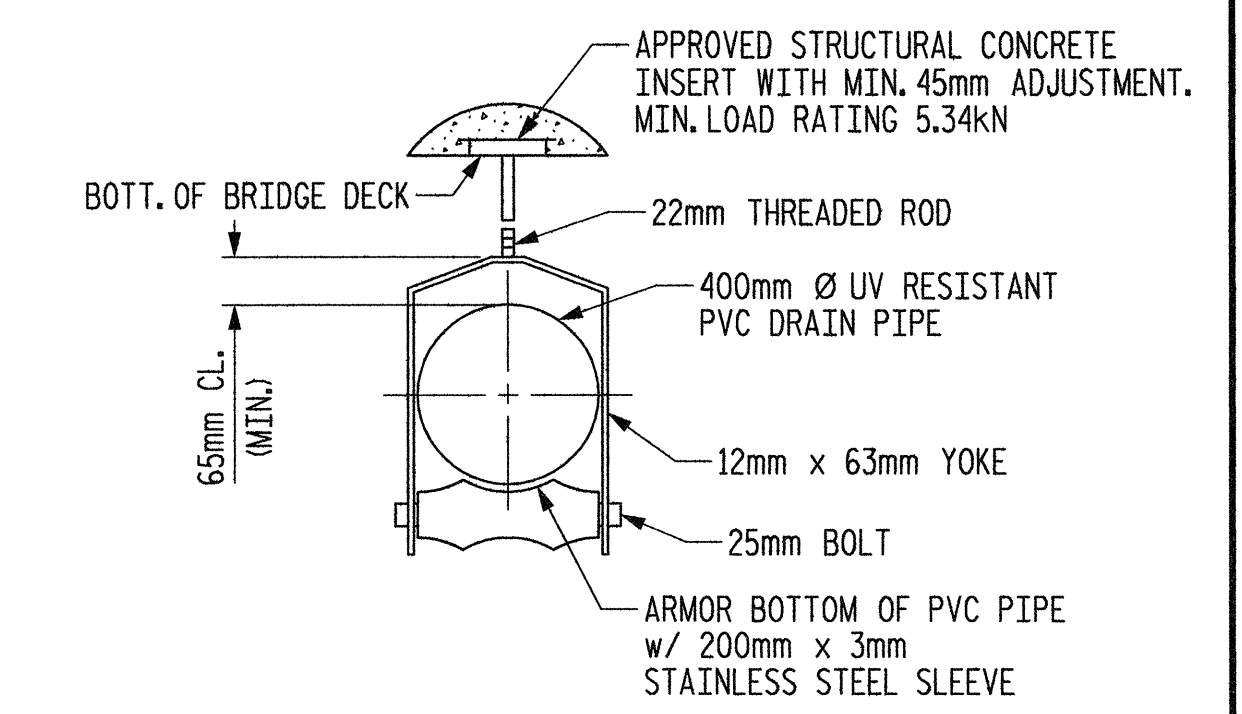


DRAIN OUTLET DETAIL



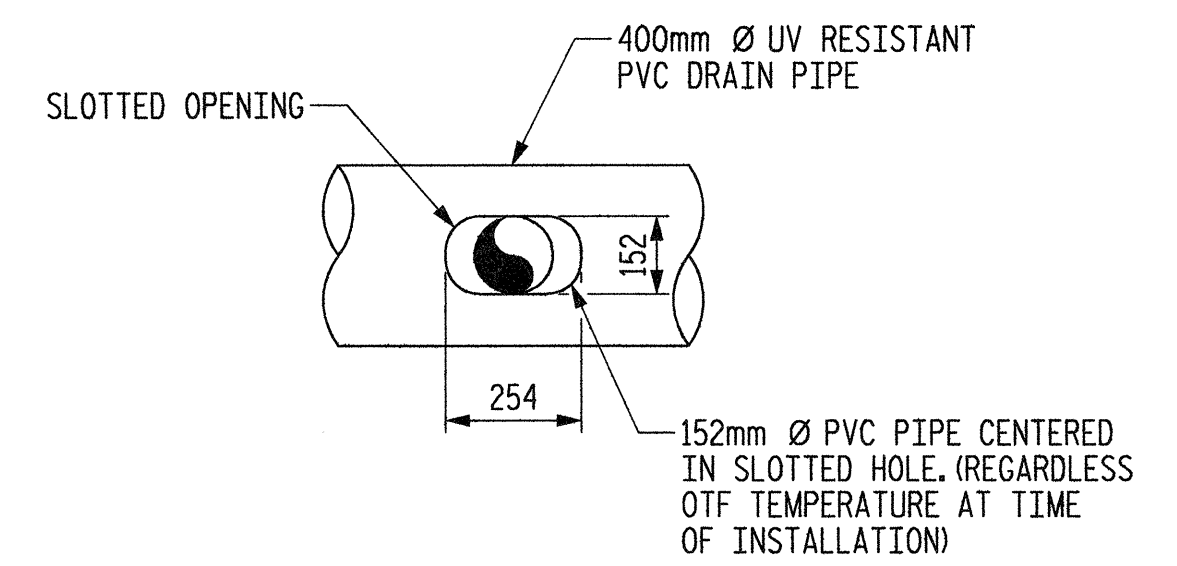
PIPE STAND-OFF DETAIL

ALL COMPONENTS SHALL BE GALVANIZED AFTER FABRICATION.
PIPE HANGER NOT SHOWN FOR CLARITY.

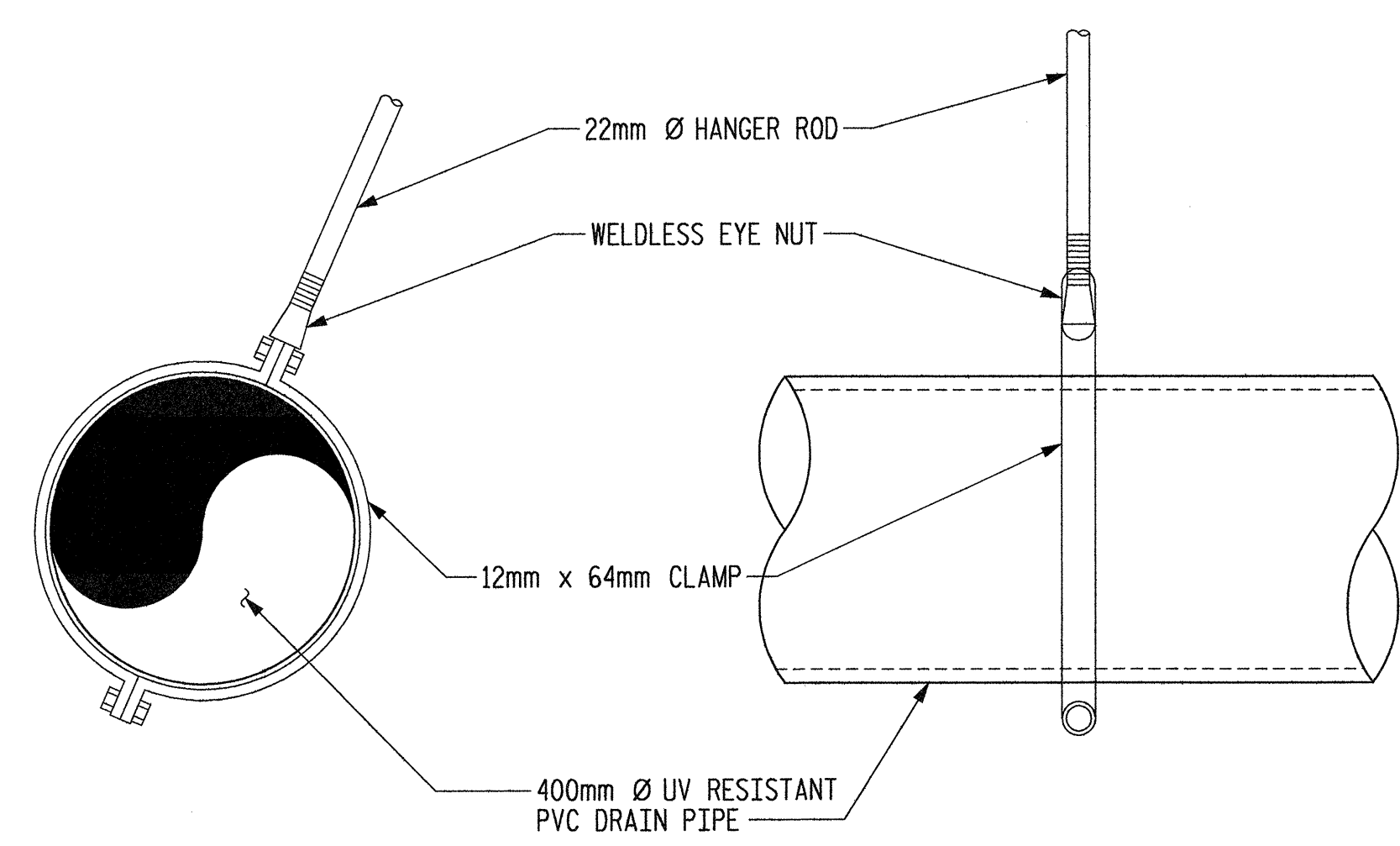


PIPE HANGER DETAIL

ALL COMPONENTS SHALL BE GALVANIZED AFTER FABRICATION



SLOTTED DETAIL

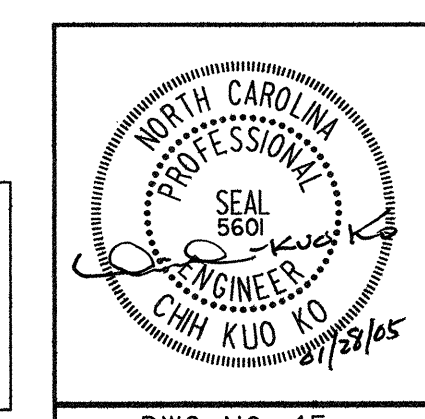
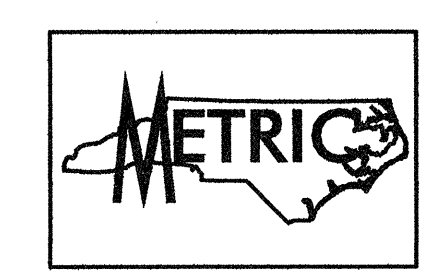


PIPE CLAMP DETAIL FOR DETAIL FOR STANDOFF

ALL COMPONENTS SHALL BE GALVANIZED AFTER FABRICATION

PROJECT NO. R-2552AA
WAKE-JOHNSTON COUNTY
STATION: 28+31.359 -11Y1-

SHEET 2 OF 2



STATE OF NORTH CAROLINA
DEPARTMENT OF TRANSPORTATION
RALEIGH
SUPERSTRUCTURE
STRUCTURE DRAINAGE SYSTEM DETAILS

Plans prepared by:
KO & ASSOCIATES, P.C.
Consulting Engineers
1011 SCHAUH DR., SUITE #202
RALEIGH, N.C. 27606
For Division of Highways

REVISIONS						SHEET NO.
NO.	BY:	DATE:	NO.	BY:	DATE:	TOTAL SHEETS
1			3			5-98
2			4			4129

DWG. NO. 15

PLOT: 01/27/2005 02:44:39 PM No. 8 Associates, P.C.
 FILE NAME: r1\2552aa.dwg

DRAWN BY: B.E. LANNING DATE: JAN. 2005
CHECKED BY: J.C. KO / A.K. ORR DATE: JAN. 2005