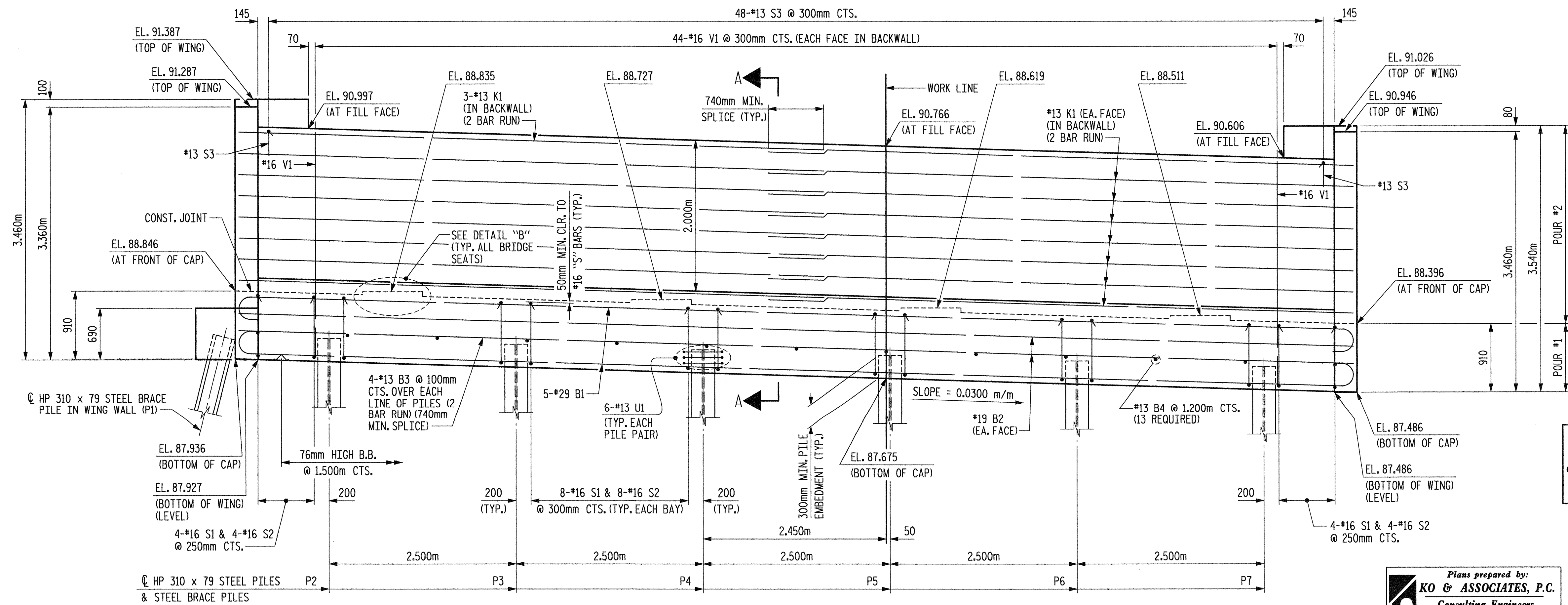


PLAN



ELEVATION

NOTES:

STIRRUPS IN CAP MAY BE SHIFTED AS NECESSARY TO CLEAR PIPE INSERTS.

FOR EPOXY PROTECTIVE COATING, SEE SPECIAL PROVISIONS.

FOR POT BEARING AND PIPE INSERT DETAILS, SEE "SUPERSTRUCTURE EXPANSION POT BEARING DETAILS" SHEET.

BACKWALL SHALL BE PLACED BEFORE APPLYING THE EPOXY PROTECTIVE COATING.

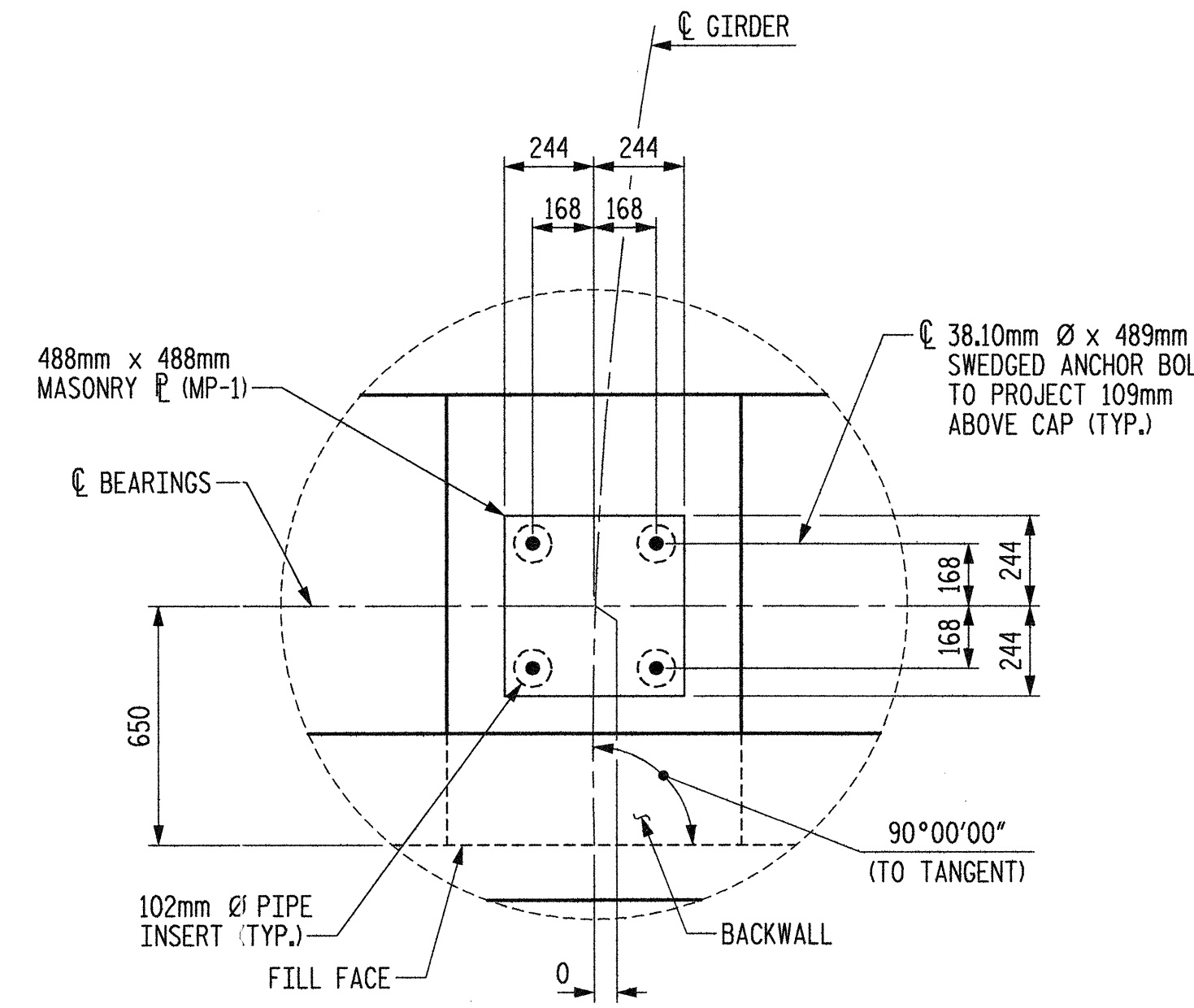
THE TOP SURFACE AREAS OF THE END BENT CAP SHALL BE CURED IN ACCORDANCE WITH THE STANDARD SPECIFICATIONS EXCEPT THAT THE MEMBRANE CURING COMPOUND METHOD SHALL NOT BE USED.

THE TOP SURFACE OF THE CAP EXCEPT THE BRIDGE SEAT BUILDUPS SHALL BE SLOPED TRANSVERSELY FROM THE FILL FACE TO THE BACK FACE AT THE RATE OF 2%.

FOR SECTION A-A, PILE SPLICE DETAILS, DETAIL "B" AND TEMPORARY DRAINAGE DETAILS, SEE SHEET 3 OF 3.

THE CONTRACTOR SHALL PROVIDE FOR INSTALLATION OF THE 102mm Ø DRAIN PIPE THROUGH THE WING WALL AS REQUIRED FOR REINFORCED BRIDGE APPROACH FILLS, SEE THE ROADWAY PLANS. REINFORCING STEEL IN THE WING WALL MAY BE SHIFTED AS NECESSARY TO CLEAR THE DRAIN PIPE.

* MEASURED ALONG C BEARING.

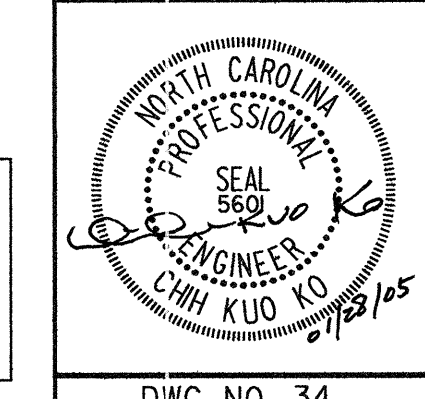
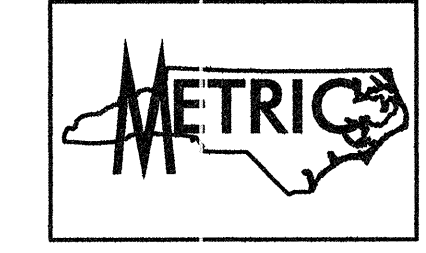


DETAIL "A"

TOP OF PILE ELEVATIONS	
PILE	ELEVATION
P1	88.227
P2	88.203
P3	88.128
P4	88.053
P5	87.978
P6	87.903
P7	87.828

PROJECT NO. R-2552AA
 WAKE-JOHNSTON COUNTY
 STATION: 28+31.359 -11Y1-

SHEET 1 OF 3



STATE OF NORTH CAROLINA
 DEPARTMENT OF TRANSPORTATION
 RALEIGH
 SUBSTRUCTURE
 END BENT #1

Plans prepared by:
KO & ASSOCIATES, P.C.
 Consulting Engineers
 101 SCHAUER DR., SUITE #202
 RALEIGH, N.C. 27606
 For Division of Highways

REVISIONS						SHEET NO.
NO.	BY:	DATE:	NO.	BY:	DATE:	
1			3			5-117
2			4			TOTAL SHEETS 429

DWG. NO. 34

PLOT: 01/27/2005
 FILE NAME: r:\2552aa.ssd\01a.dwg
 03/29/27 PM No. & Associates, P.C.

DRAWN BY: B.E. LANNING DATE: JAN. 2005
 CHECKED BY: J.C. KO / A.K. ORR DATE: JAN. 2005