

NOTES:

STIRRUPS IN CAP MAY BE SHIFTED AS NECESSARY TO CLEAR ANCHOR BOLTS.

PILES SHALL BE DRIVEN TO A MINIMUM BEARING CAPACITY OF 530 KN EACH.

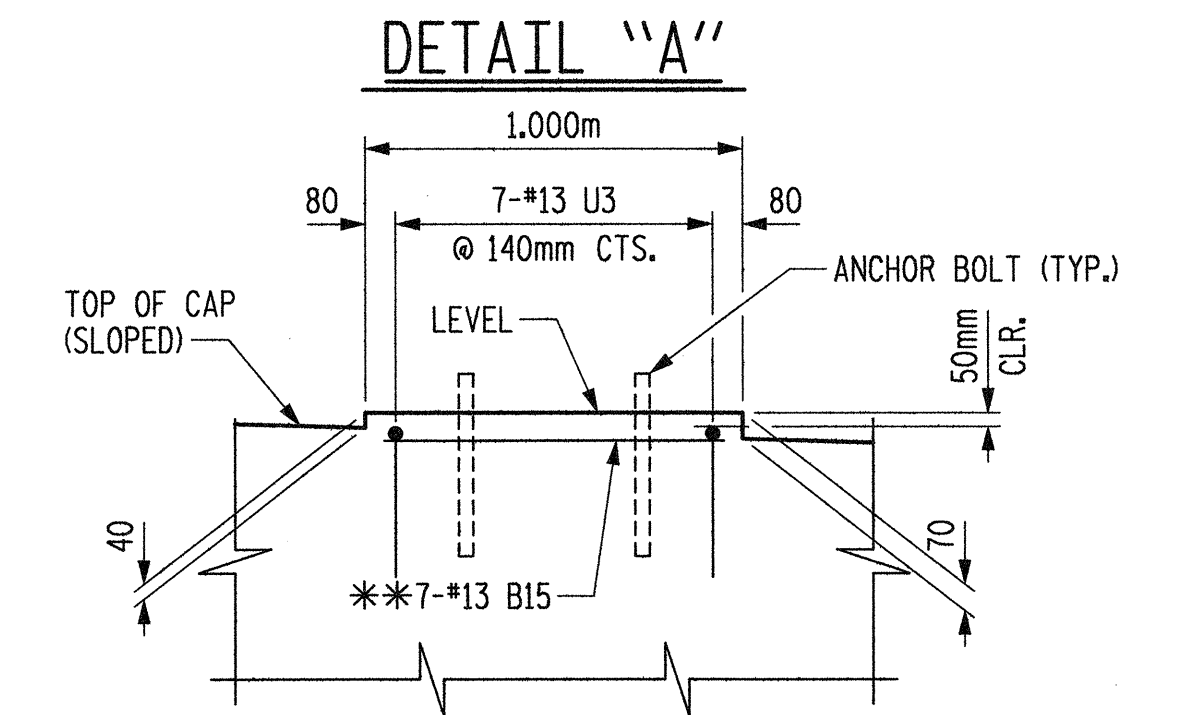
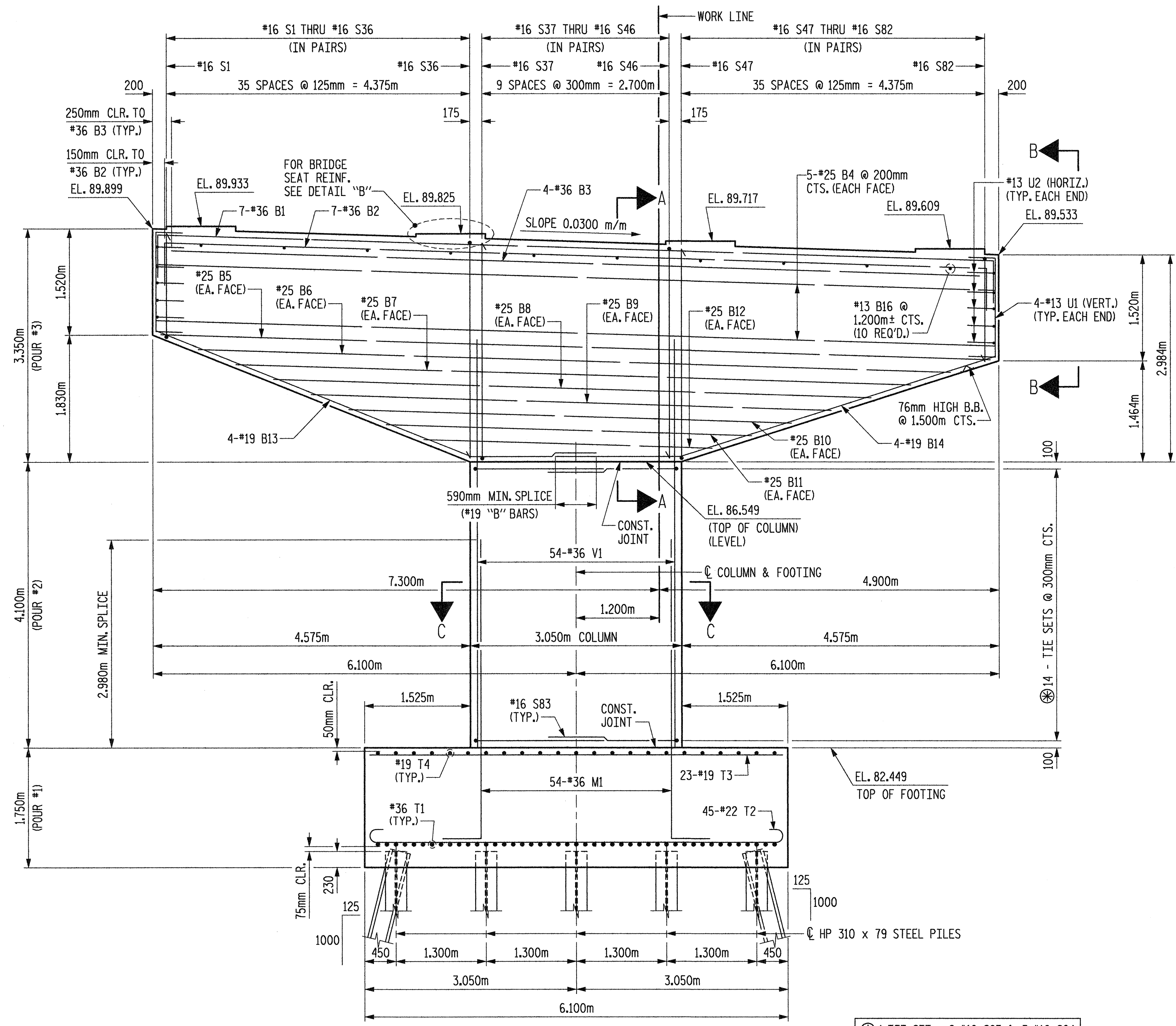
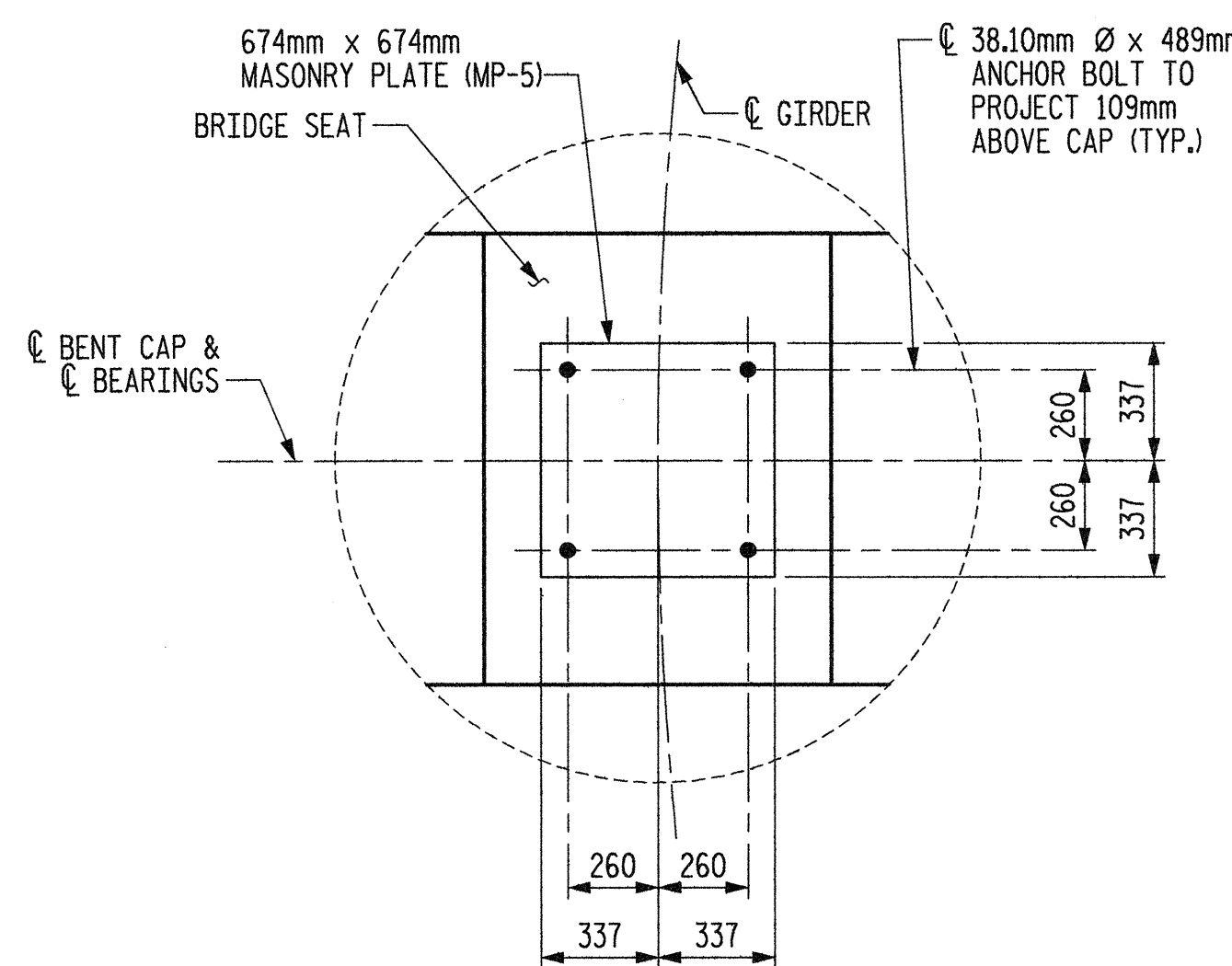
FOR PILE SPLICE DETAILS, SEE "SUBSTRUCTURE END BENT #1", SHEET 3 OF 3.

WHEN DRIVING PILES, THE MAXIMUM BLOW COUNT SHALL NOT BE EXCEEDED

DETAILED DRAWINGS FOR FALSEWORK AND FORMS FOR THIS HAMMERHEAD BENT SHALL BE SUBMITTED FOR BENT CAP. SEE SHEET SNSM AND SPECIAL PROVISIONS.

FOR OTHER NOTES, SEE "GENERAL NOTES AND TOTAL BILL OF MATERIAL" SHEET.

FOR END ELEVATION, SECTION A-A, END VIEW B-B AND SECTION C-C, SEE SHEET 2 OF 3.

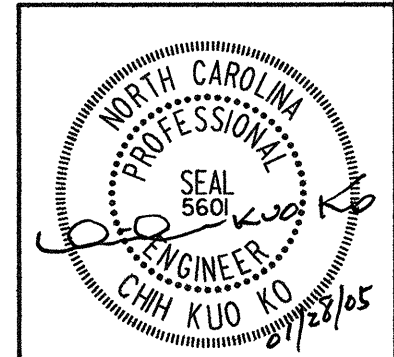
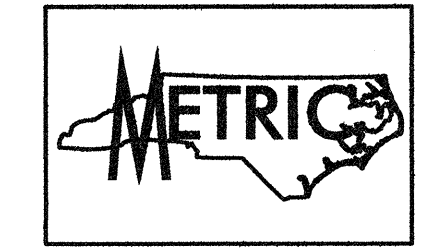


PROJECT NO. R-252AA

WAKE-JOHNSTON COUNTY

STATION: 28+31.359 -I1Y1-

SHEET 1 OF 3



STATE OF NORTH CAROLINA
DEPARTMENT OF TRANSPORTATION
RALEIGH

SUBSTRUCTURE
BENT #2

Plans prepared by:
KO & ASSOCIATES, P.C.
Consulting Engineers
1011 SCHAUH DR. SUITE #202
RALEIGH, N.C. 27606
For Division of Highways

REVISIONS						SHEET NO.
NO.	BY:	DATE:	NO.	BY:	DATE:	TOTAL SHEETS
1			3			5-123
2			4			42-9

DWG. NO. 40

1 TIE SET = 2-#16 S83 & 3-#16 S84

PLOT: 01/27/2005 0:35:13 PM Ko & Associates, P.C.
 FILE NAME: r:\252aa_s1.b2e_02.dgn

DRAWN BY: B.E. LANNING DATE: JAN. 2005
 CHECKED BY: J.C. KO / A.K. ORR DATE: JAN. 2005