

PLAN OF APPROACH SLAB AT END BENT #2

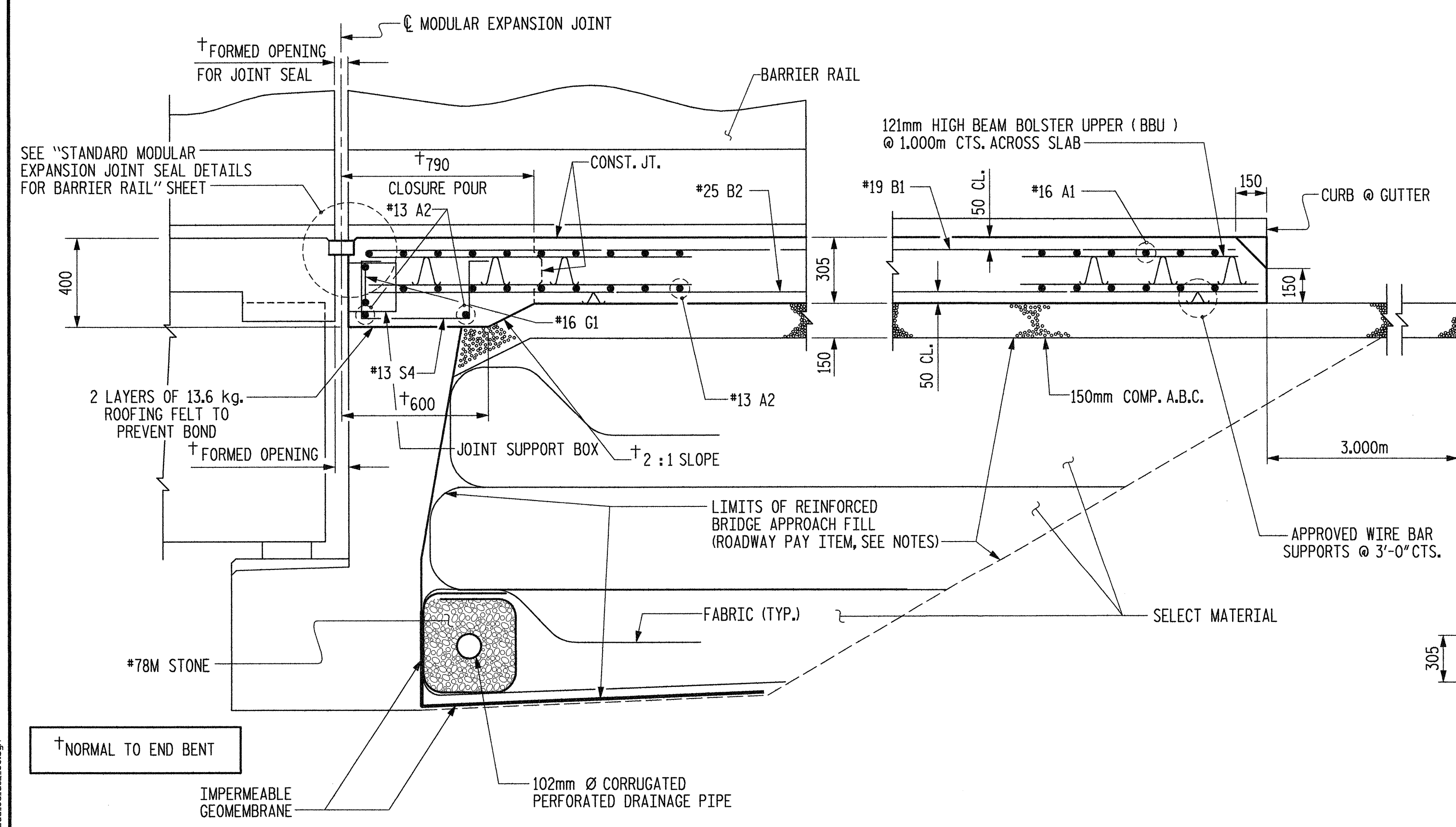
NOTE: ARC OFFSETS TO OUTSIDE EDGE OF APPROACH SLAB ARE NEGLIGIBLE, THEREFORE, NOT SHOWN.

NOTE: THE #19 AND #25 "B" BARS IN THE APPROACH SLAB MAY BE CUT AS DIRECTED BY THE ENGINEER TO CLEAR THE MODULAR JOINT SUPPORT BOXES.

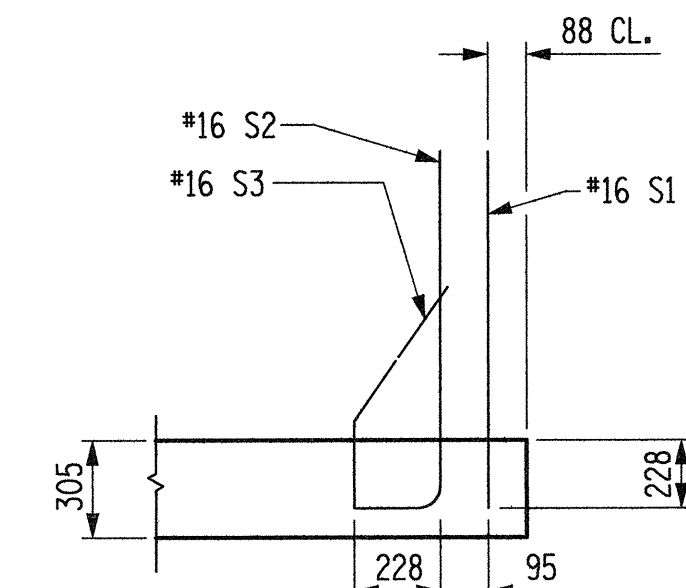
▲ DIMENSIONS ARE NORMAL OR RADIAL TO C SURVEY - FLYLEREV -.

\*\* PLACE AT JOINT SUPPORT BOX LOCATIONS. (SEE SUPERSTRUCTURE TYPICAL SECTIONS AND DETAILS - "DROPWALL DETAILS", SHEET 2 OF 2)

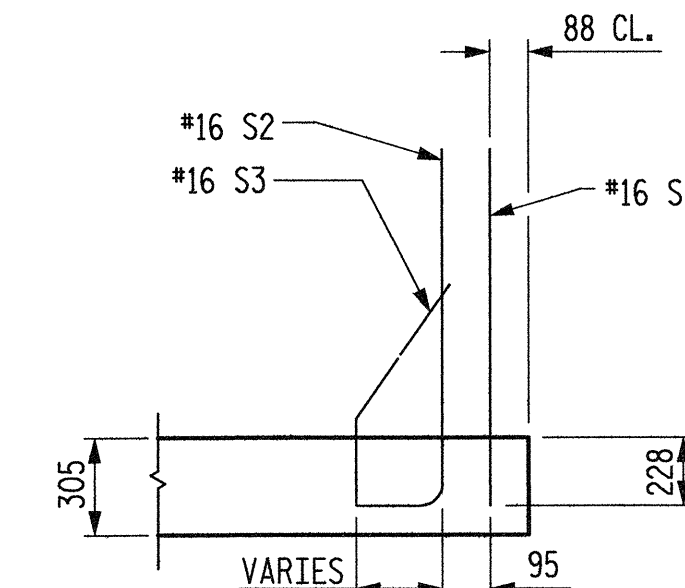
NOTE: THE #13 AND #16 "A" BARS ARE PLACED RADIALY AND SPACED ALONG C SURVEY - FLYLEREV -.



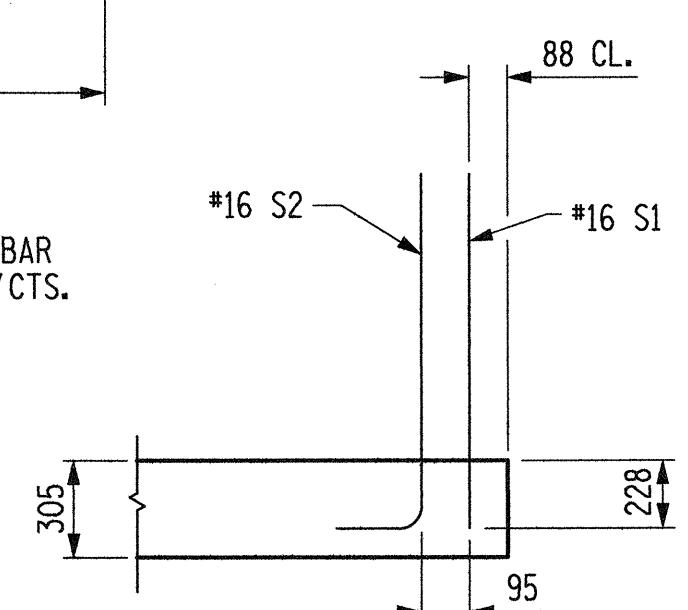
SECTION THRU SLAB



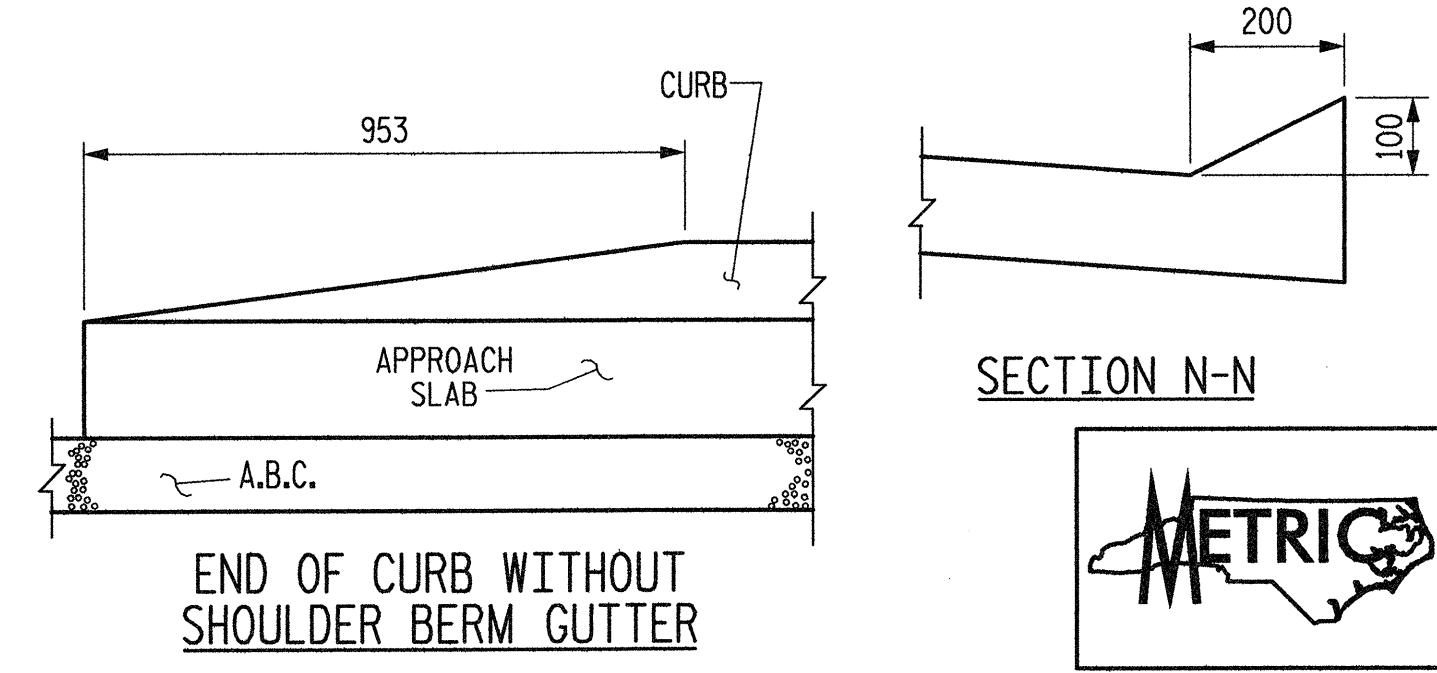
SECTION K-K



SECTION L-L



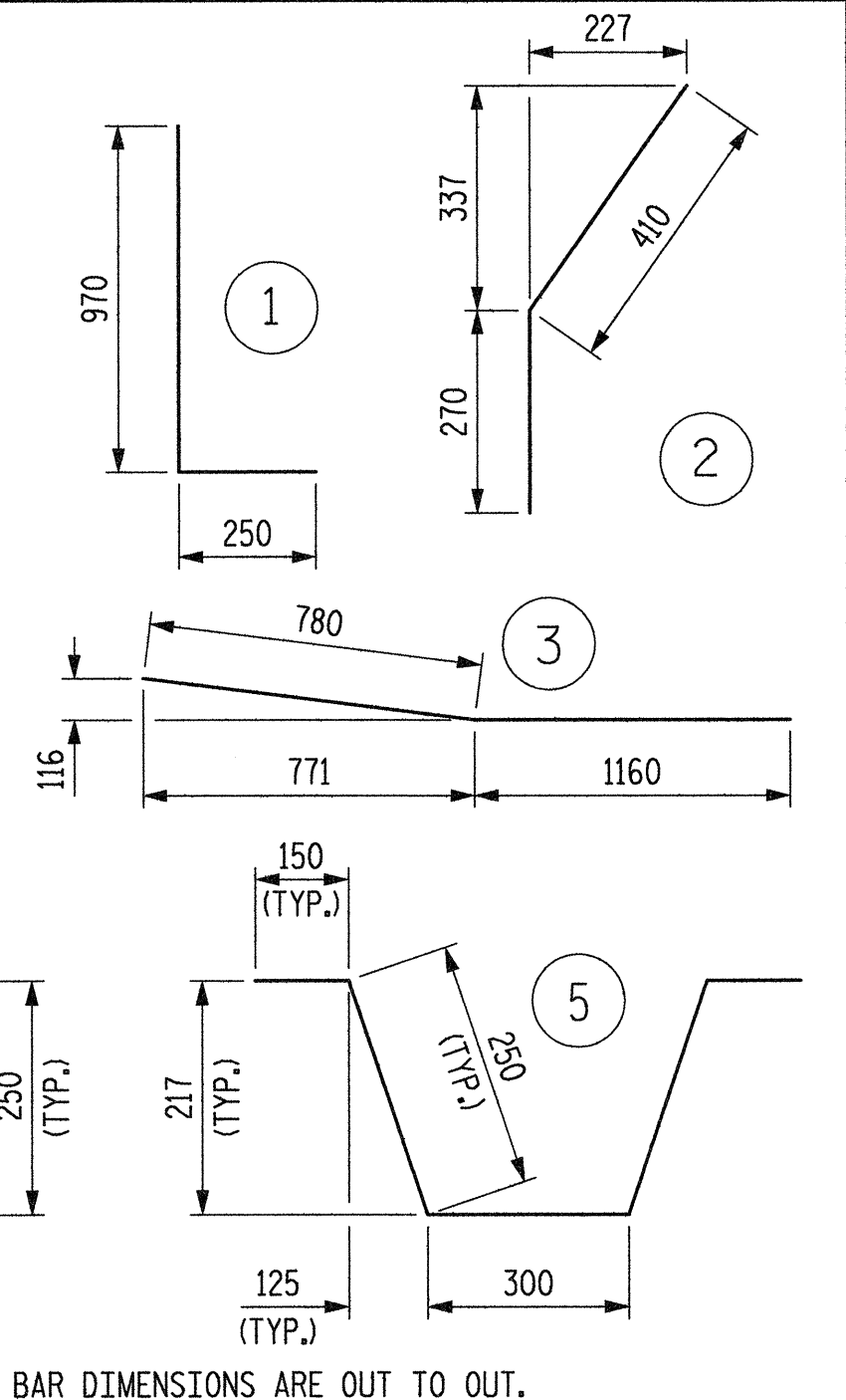
SECTION M-M



CURB DETAILS

BILL OF MATERIAL						
APPROACH SLAB AT END BENT #2						
BAR	NO.	SIZE	TYPE	LENGTH	WEIGHT	
*A1	100	16	STR	6840	1062	
A2	104	13	STR	6720	695	
*B1	86	19	STR	7380	1419	
B2	86	25	STR	7480	2556	
*B3	14	16	STR	3560	77	
*B4	2	16	3	1940	6	
*B5	2	19	STR	3560	16	
B6	2	25	STR	3560	28	
*G1	11	16	5	1100	19	
*S1	50	16	STR	980	76	
*S2	50	16	1	1220	95	
*S3	20	16	2	680	21	
*S4	43	13	4	1100	47	
REINFORCING STEEL					kg.	3279
* EPOXY COATED REINFORCING STEEL					kg.	2838
CLASS AA CONCRETE BREAKDOWN						
POUR 1	SLAB AND CURB	C. M.			30.8	
POUR 2	RAIL	C. M.			1.6	
CLASS AA CONCRETE					C. M.	32.4

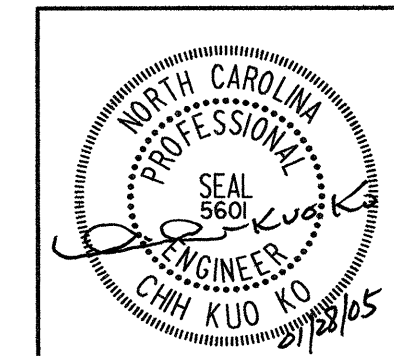
BAR TYPES



PROJECT NO. R-2552AA  
 WAKE-JOHNSTON COUNTY  
 STATION: 28+31.359 -I1Y1-

SHEET 2 OF 4

STATE OF NORTH CAROLINA  
 DEPARTMENT OF TRANSPORTATION  
 RALEIGH  
 STANDARD  
 BRIDGE APPROACH SLAB  
 FOR FLEXIBLE PAVEMENT  
 WITH BARRIER RAIL



Plans prepared by:  
**KO & ASSOCIATES, P.C.**  
 Consulting Engineers  
 101 SCHUBB DR., SUITE #202  
 RALEIGH, N.C. 27606  
 For Division of Highways

REVISIONS				SHEET NO.	
NO.	BY:	DATE:	NO.	BY:	DATE:
1			3		
2			4		

DWG. NO. 54

STD. NO. BAS5SM

ASSEMBLED BY : B.E. LANNING DATE : JAN. 2005  
 CHECKED BY : J.C. KO / A.K. ORR DATE : JAN. 2005  
 DRAWN BY : RWW 8/01  
 CHECKED BY : LES 8/01

DATE : JAN. 2005  
 DATE : JAN. 2005  
 ADDED 12/01  
 REV. 5/7/03R RWW/JTE