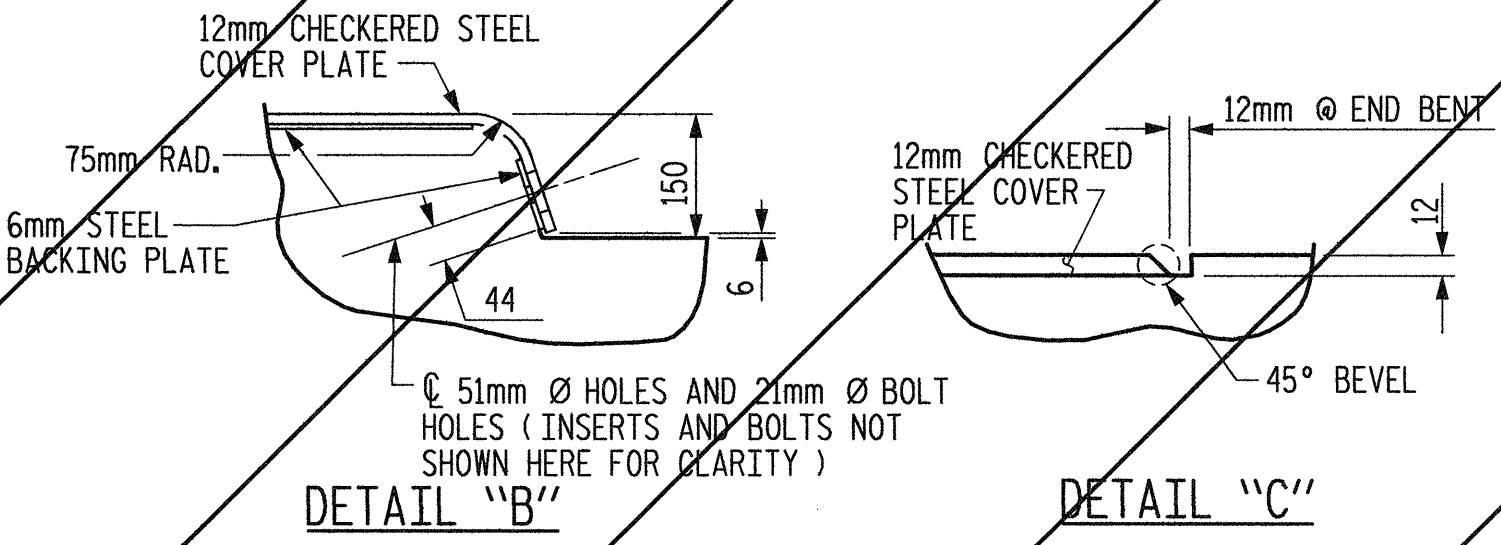
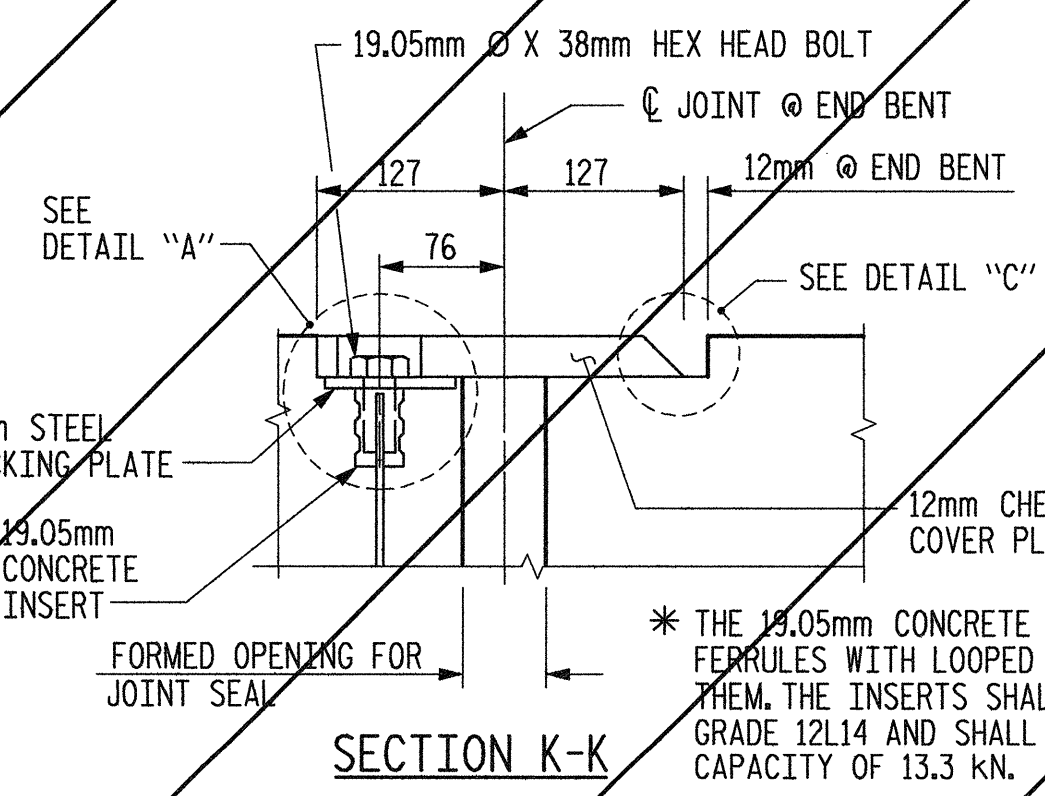
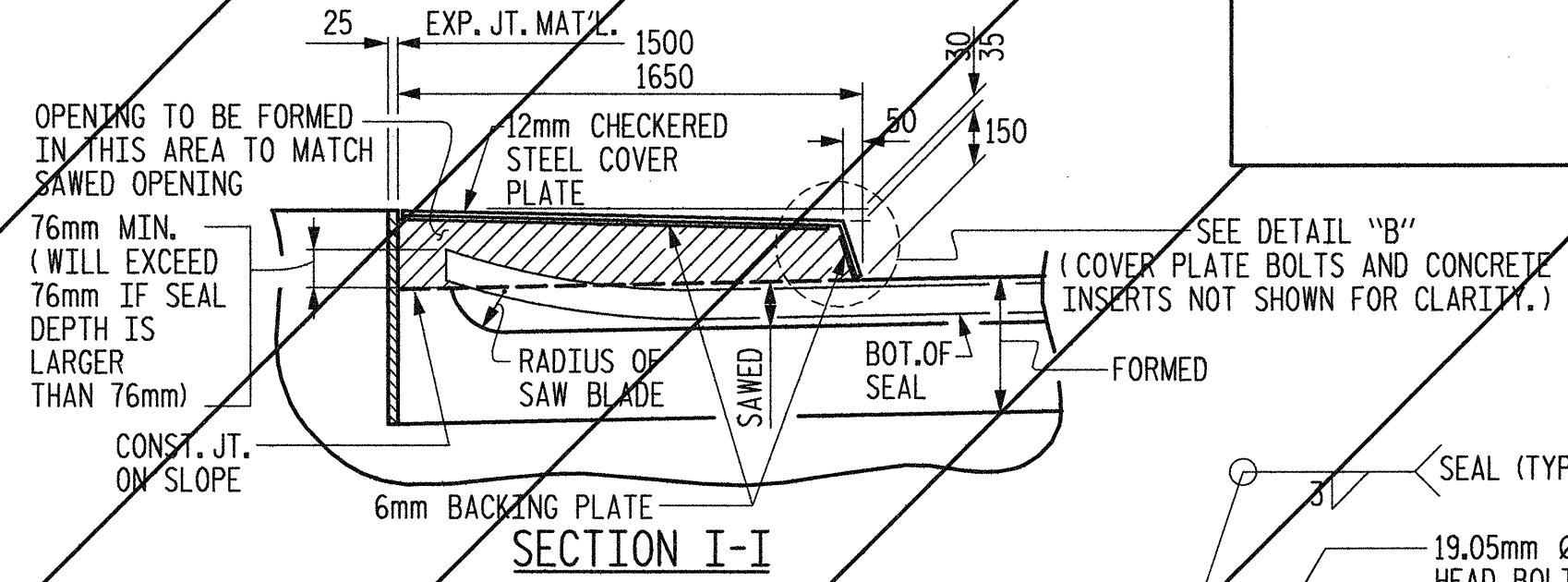
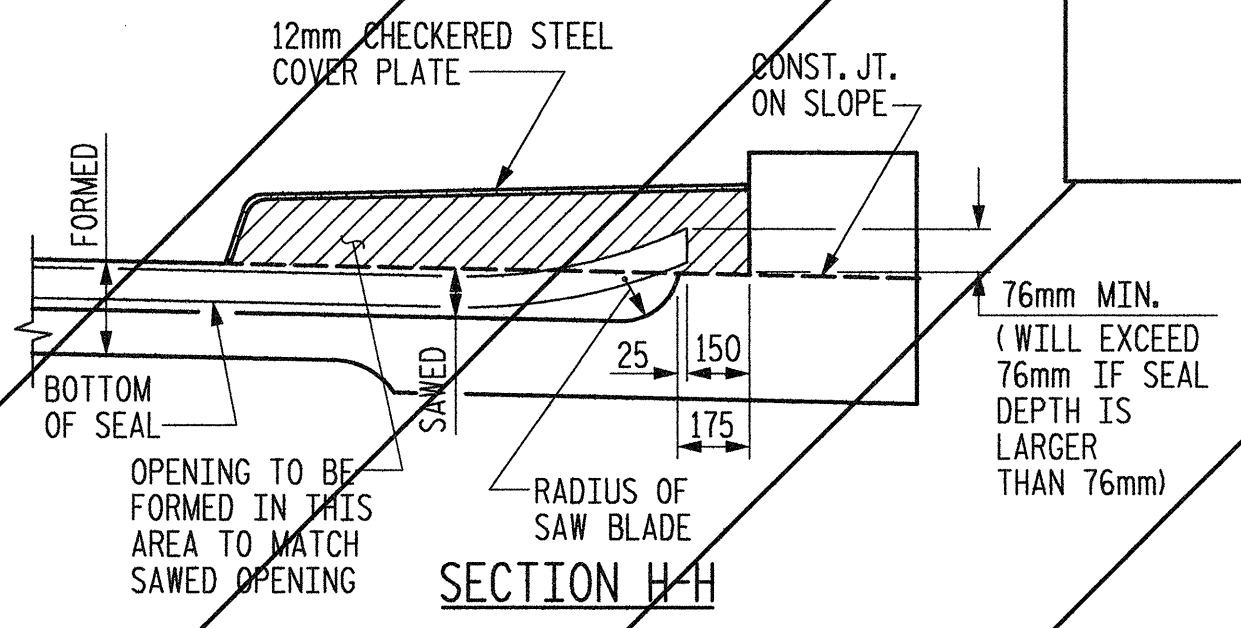
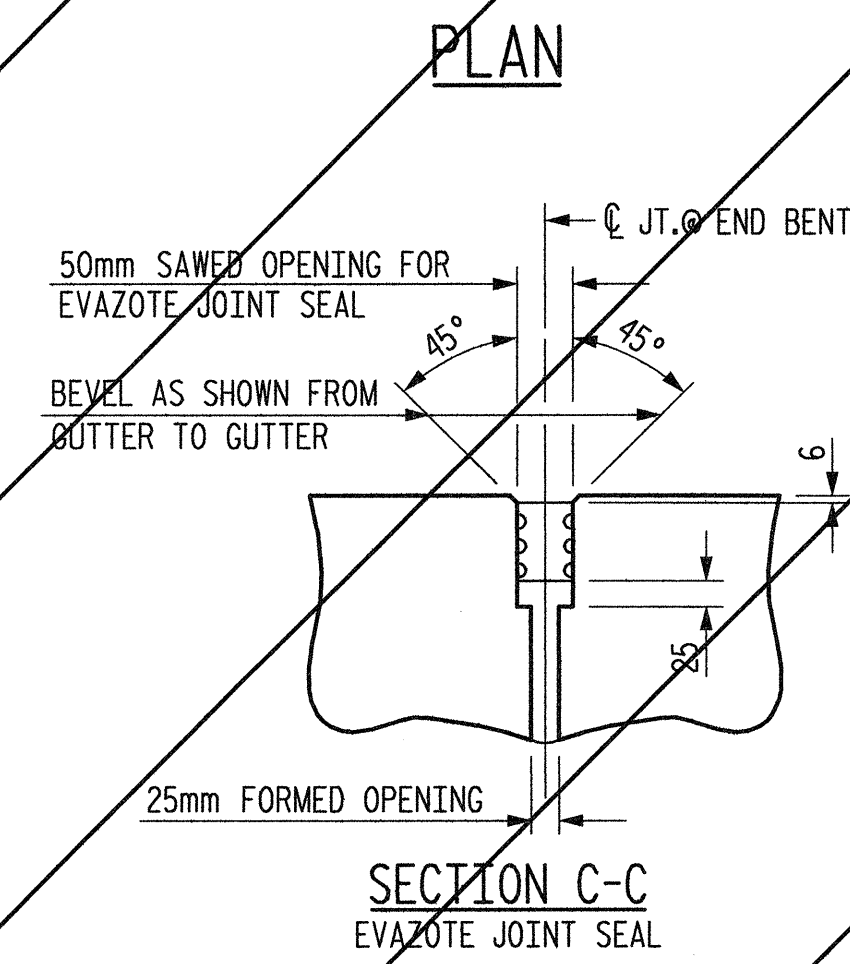
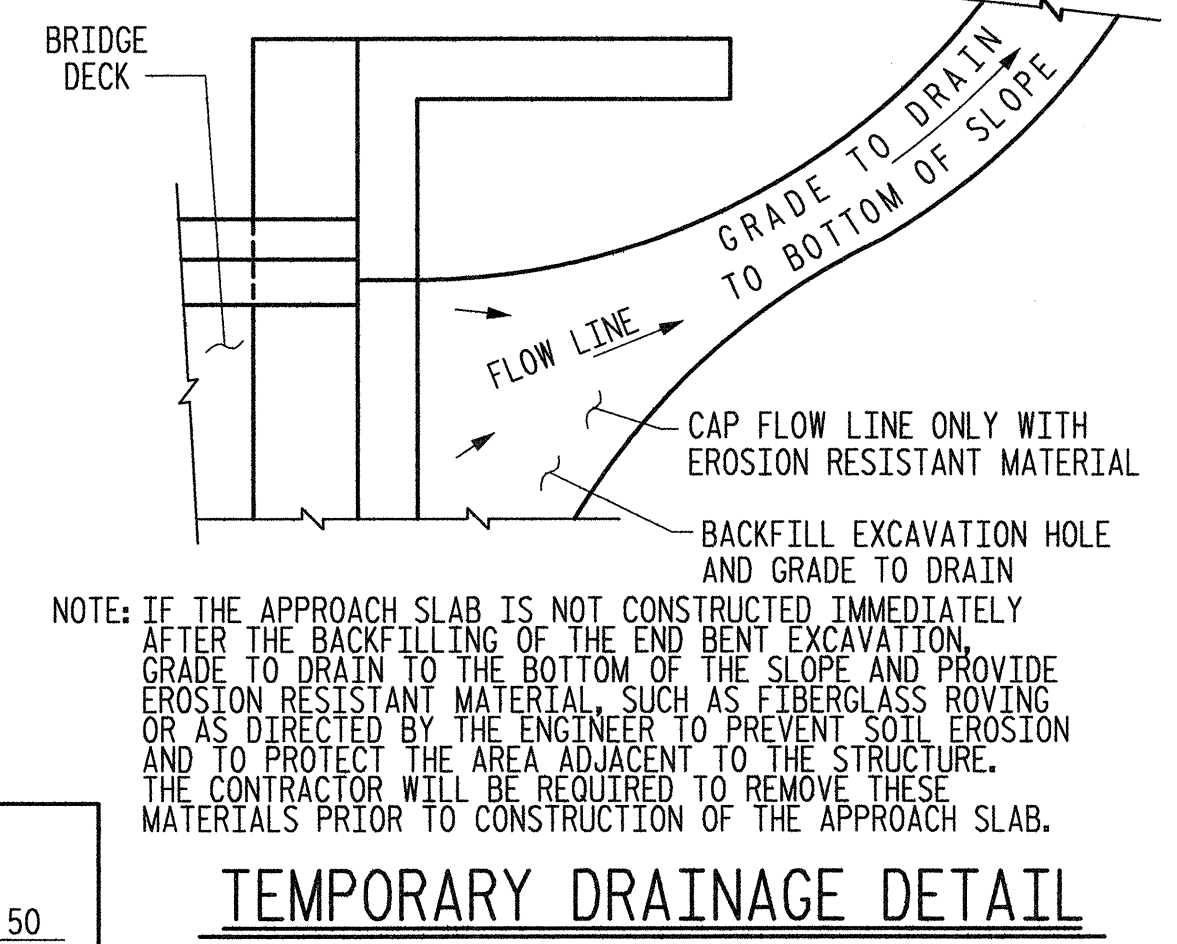


TEMPORARY BERM AND SLOPE DRAIN DETAILS

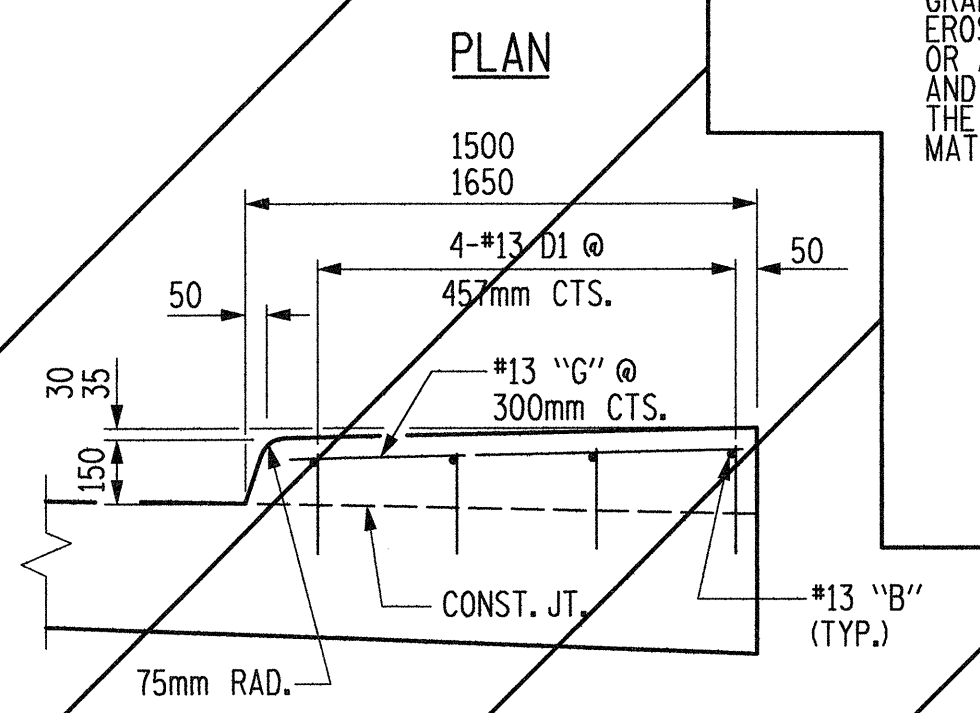


JOINT SEAL DETAILS @ END BENT

JOINT SEAL DETAILS @ END BENT (FOR SIDEWALK)



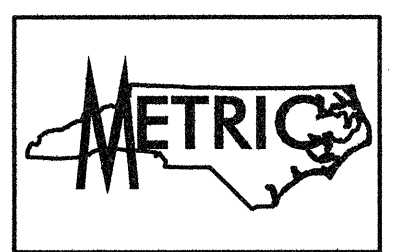
TEMPORARY DRAINAGE DETAIL



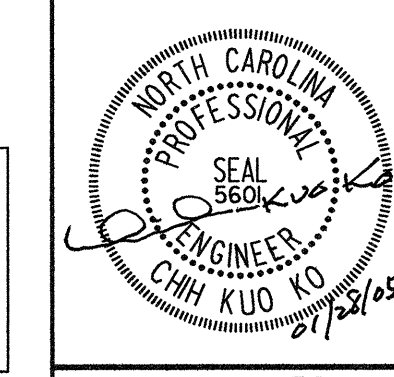
SECTION N-N SIDEWALK DETAILS

PROJECT NO. R-2552AA
WAKE-JOHNSTON COUNTY
 STATION: 28+31.359 -I1Y1-

SHEET 4 OF 4



STATE OF NORTH CAROLINA
 DEPARTMENT OF TRANSPORTATION
 RALEIGH
 STANDARD
 BRIDGE APPROACH
 SLAB DETAILS



Plans prepared by:
KO & ASSOCIATES, P.C.
 Consulting Engineers
 1011 SCHAUB DR., SUITE #202
 RALEIGH, N.C. 27606
 For Division of Highways

REVISIONS						SHEET NO.
NO.	BY:	DATE:	NO.	BY:	DATE:	TOTAL SHEETS
1			3			5-139
2			4			429

ASSEMBLED BY : B.E. LANNING DATE : JAN. 2005
 CHECKED BY : J.C. KO / A.K. ORR DATE : JAN. 2005
 DRAWN BY : FCJ 11/88 RAL/LES
 CHECKED BY : ARB 11/88 REV. 10/17/00 RWW/LES
 REV. 8/16/99 REV. 5/7/03 RWW/JTE

PLOT: 01/27/2005 8:45:07 PM Ko & Associates, P.C.
 FILE NAME: r1v2552aa.dwg