

**SECTION A-A**

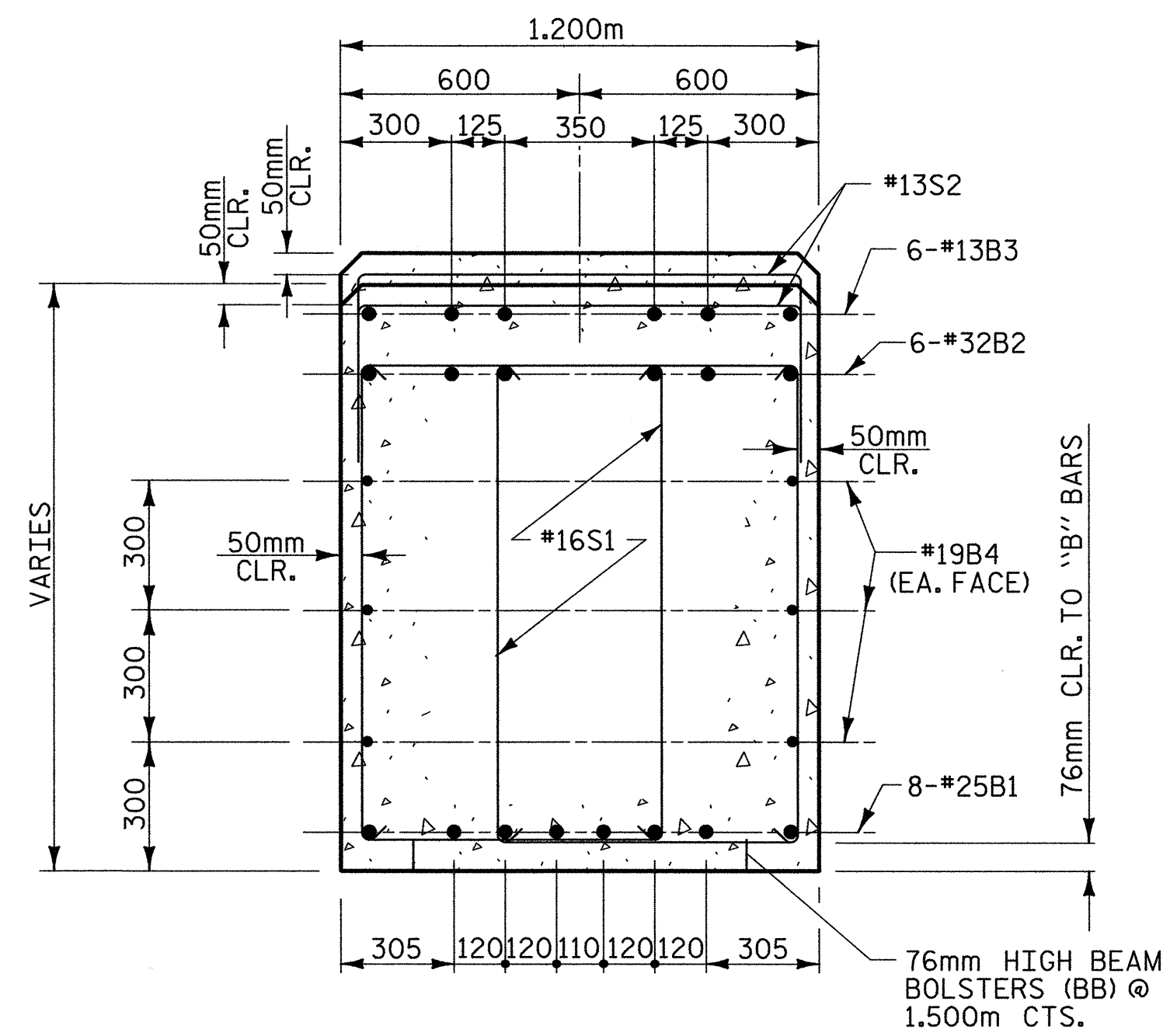
**NOTES:**

STIRRUPS IN THE CAP MAY BE SHIFTED AS NECESSARY TO CLEAR ANCHOR BOLTS.

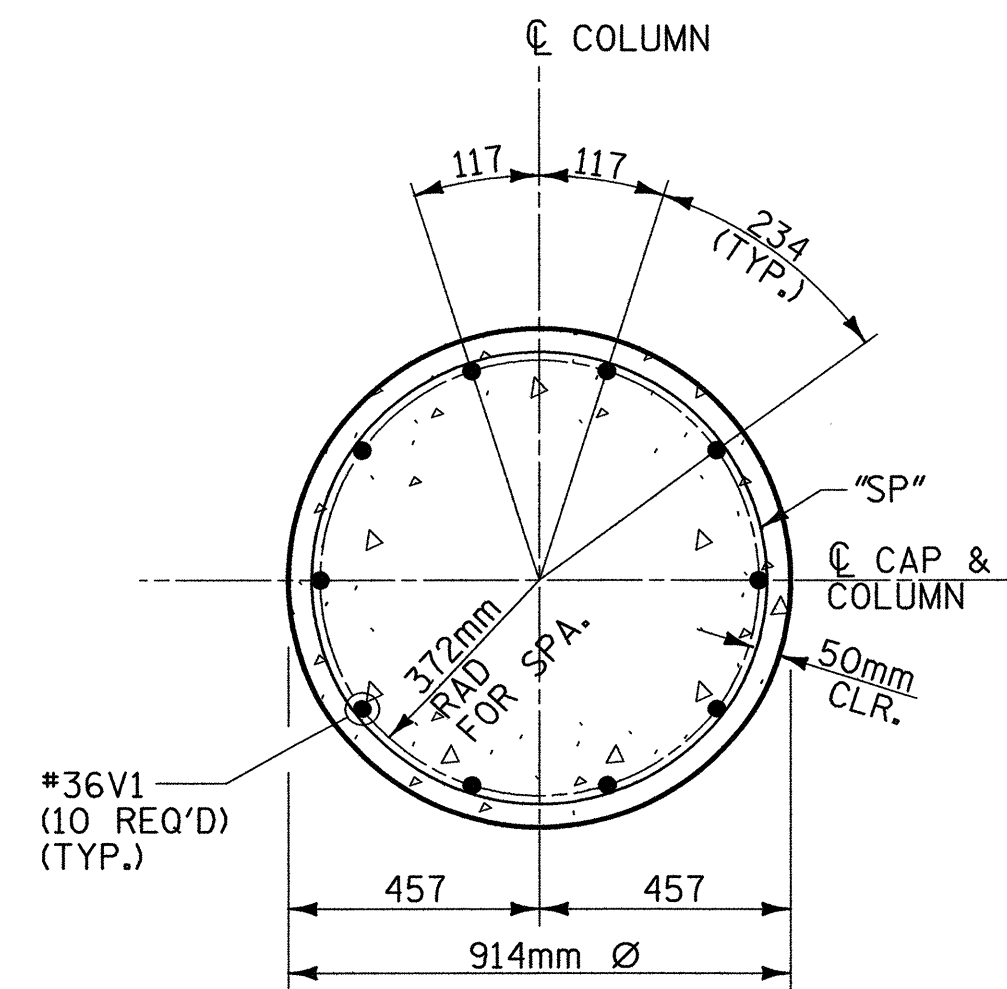
HOOKS ON "V" BARS MAY BE TURNED AS NECESSARY FOR PLACING REINFORCING STEEL.

THE CONTRACTOR'S ATTENTION IS CALLED TO THE FACT THAT THE LONGITUDINAL REINFORCEMENT FOR THE DRILLED PIERS IS DETAILED WITH ONE METER OF EXTRA LENGTH.

ALL STEEL IN THE DRILLED PIERS IS INCLUDED IN THE PAY ITEMS FOR "REINFORCING STEEL" AND "SPIRAL COLUMN REINFORCING STEEL".

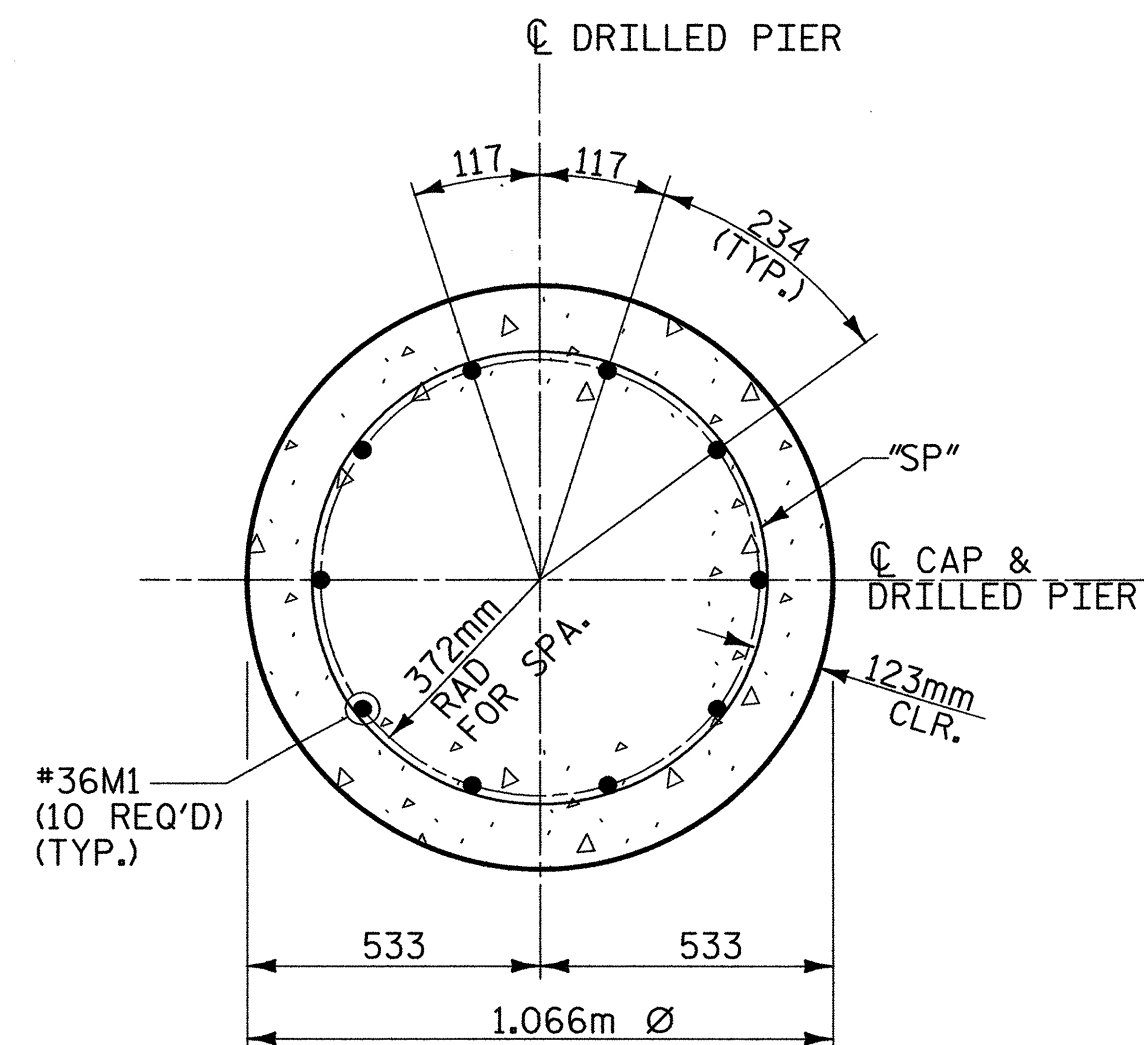


**SECTION B-B**



**SECTION THRU COLUMN**

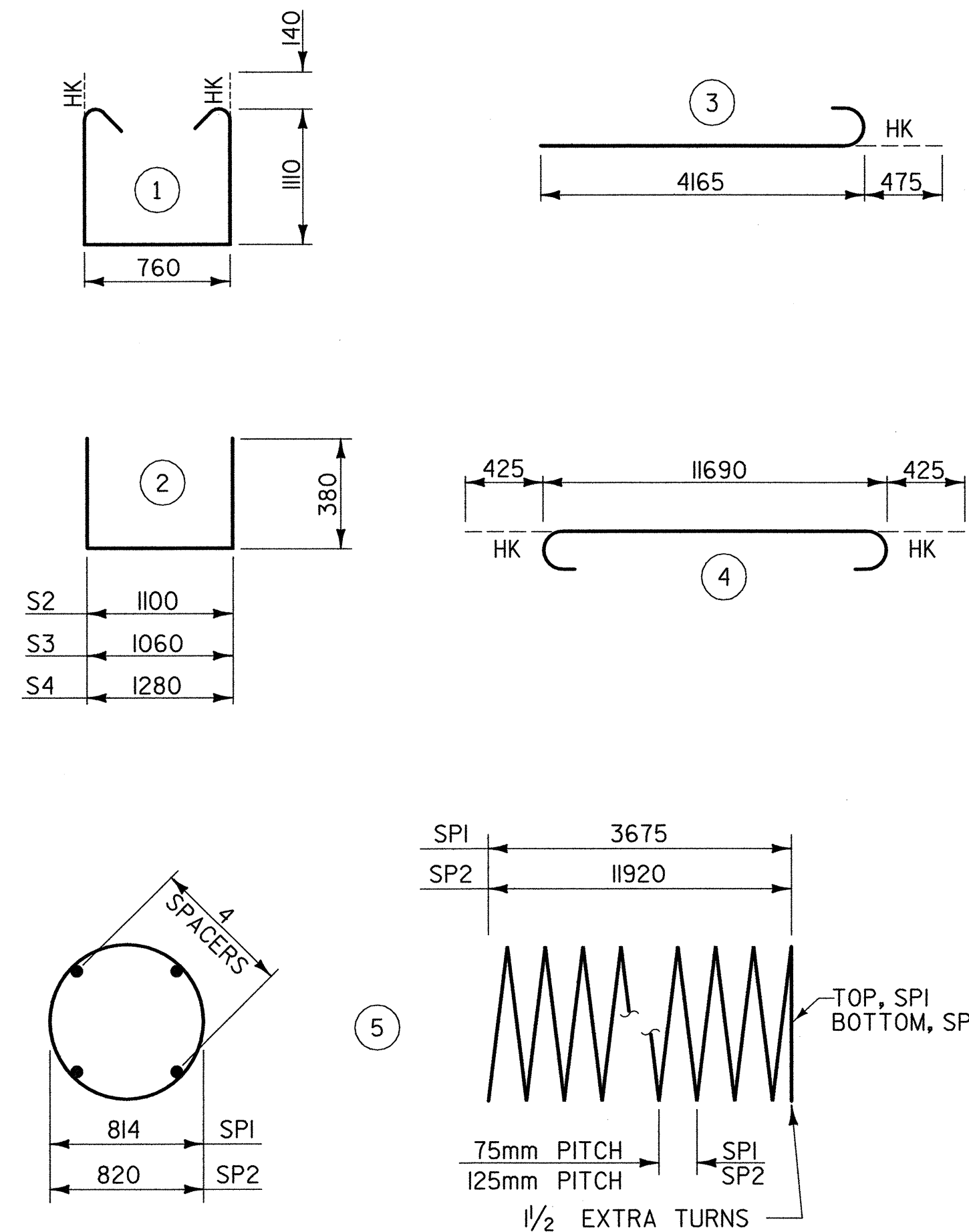
(ALL COLUMNS SIMILAR)  
(SEE ELEVATION FOR BAR MARKS)



**SECTION THRU DRILLED PIER**

(ALL DRILLED PIERS SIMILAR)  
(SEE ELEVATION FOR BAR MARKS)

**BAR TYPES**



ALL BAR DIMENSIONS ARE OUT TO OUT

\*\* THE SP1 SPIRAL REINFORCING STEEL SHALL BE W20 OR D-20 COLD DRAWN WIRE OR #13 PLAIN OR DEFORMED BAR

THE SP2 SPIRAL REINFORCING STEEL SHALL BE W31 OR D-31 COLD DRAWN WIRE OR #16 PLAIN OR DEFORMED BAR

**BILL OF MATERIAL**

FOR BENT 1					
BAR	NO.	SIZE	TYPE	LENGTH	WEIGHT
B1	8	#25	STR	11700	372
B2	6	#32	4	12540	482
B3	6	#13	STR	4600	27
B4	6	#19	STR	11700	157
MI	30	#36	STR	15240	3615
SI	80	#16	1	3260	405
S2	33	#13	2	1860	61
S3	14	#13	2	1820	25
S4	4	#13	2	2040	8
VI	30	#36	3	4640	1101
TOTAL REINFORCING STEEL =				6253 kg	
SP1	3	**	5	123205	367
SP2	3	**	5	240560	1120
SPIRAL COLUMN REINFORCING STEEL =				1487 kg	
CLASS "A" CONCRETE - CU. METERS					
POUR 2 (COLUMNS)				7.1 C.M.	
POUR 3 (CAP)				18.5 C.M.	
TOTAL				25.6 C.M.	
DRILLED PIER @ BENT 1					
1066mm DIA. DRILLED PIERS IN SOIL =				31.3 LIN M.	
1066mm DIA. DRILLED PIERS NOT IN SOIL =				4.5 LIN M.	
SID INSPECTION =				1 EA.	
SPT TESTING =				3 EA.	
CROSSHOLE SONIC LOGGING =				1 EA.	
CSL TUBES =				153.6 LIN M.	
DRILLED PIER CONC. (FOR INFORMATION ONLY) =				32.0 C.M.	

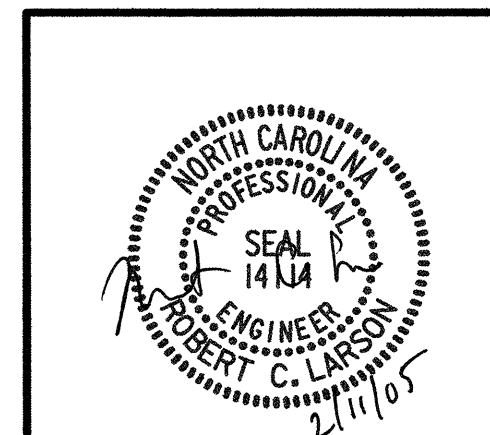


PROJECT NO. R-2552AA  
 WAKE - JOHNSTON COUNTY  
 STATION: 14+38.000 -LREV- POT

SHEET 2 OF 2

STATE OF NORTH CAROLINA  
 DEPARTMENT OF TRANSPORTATION  
 RALEIGH

**SUBSTRUCTURE  
 BENT 1  
 (LEFT LANE)**



**REVISIONS**

NO.	BY:	DATE:	NO.	BY:	DATE:
1			3		
2			4		

SHEET NO.	
5-166	TOTAL SHEETS
429	

REFERENCE NO. BL-27

02/04/2005 06:53:00 AM G:\p\proj\2004\213\01R-2552\Structure\Site 4\Left\_Lane\R2552AA\_SD\_BLD.dgn

DRAWN BY: J. P. SHERMAN DATE: 11/04  
 CHECKED BY: R. C. LARSON DATE: 12/04