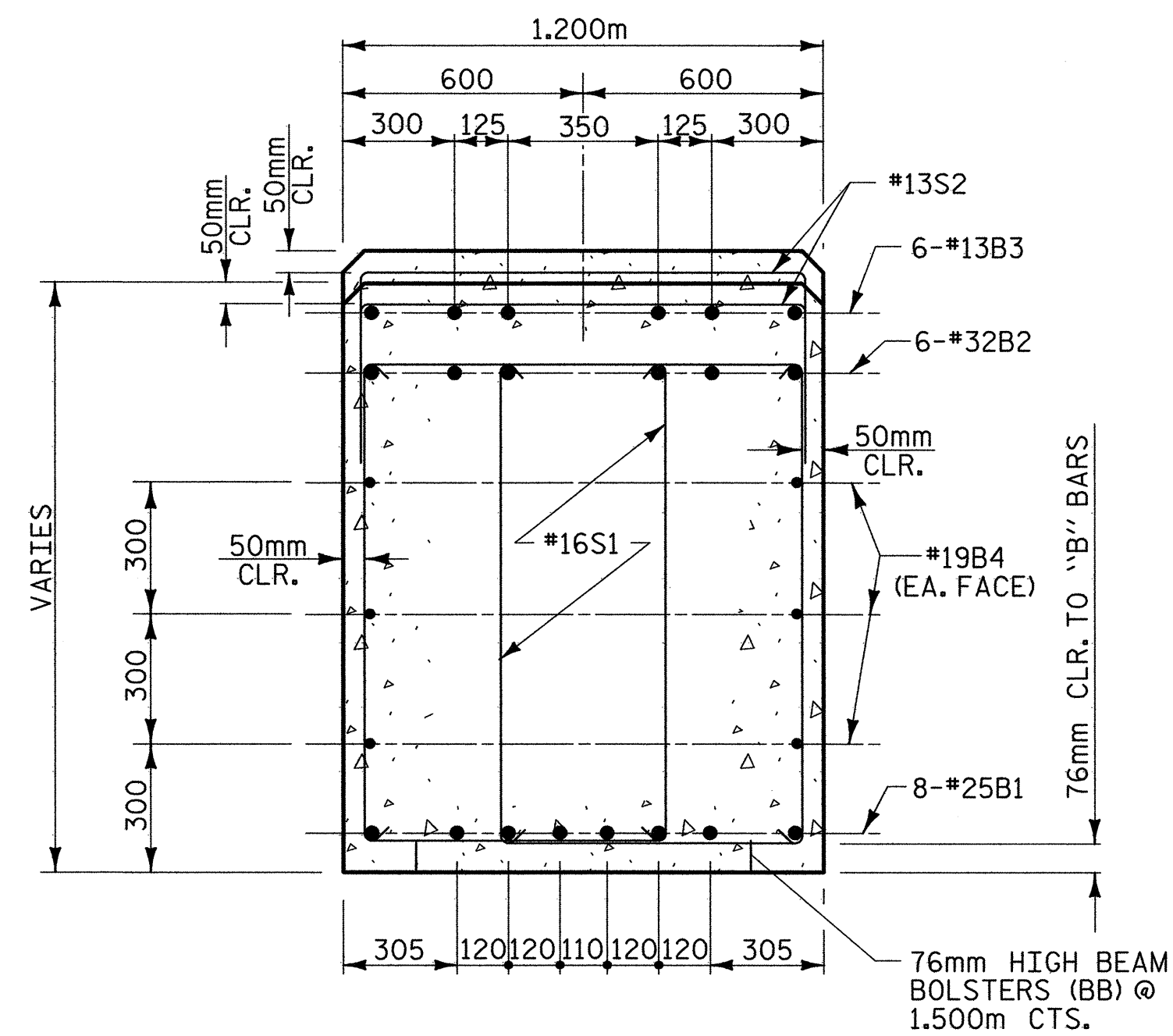
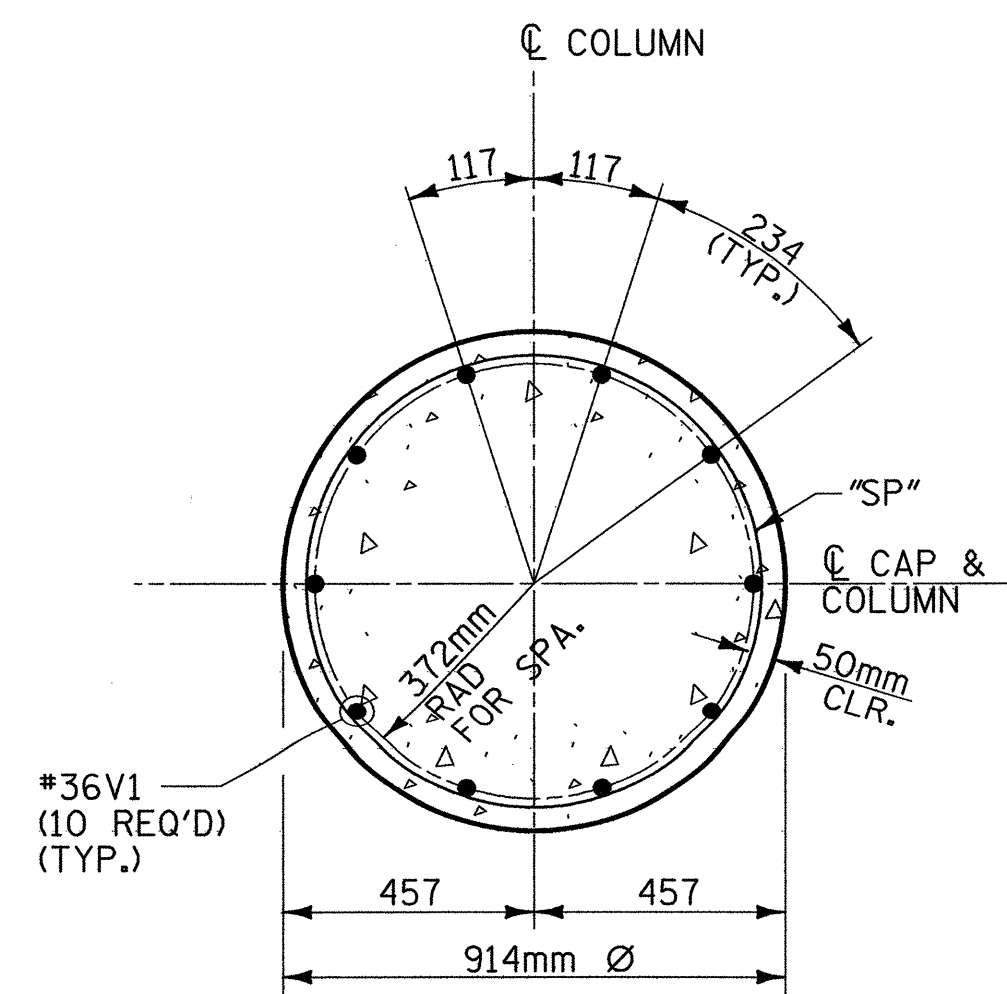


**SECTION A-A**



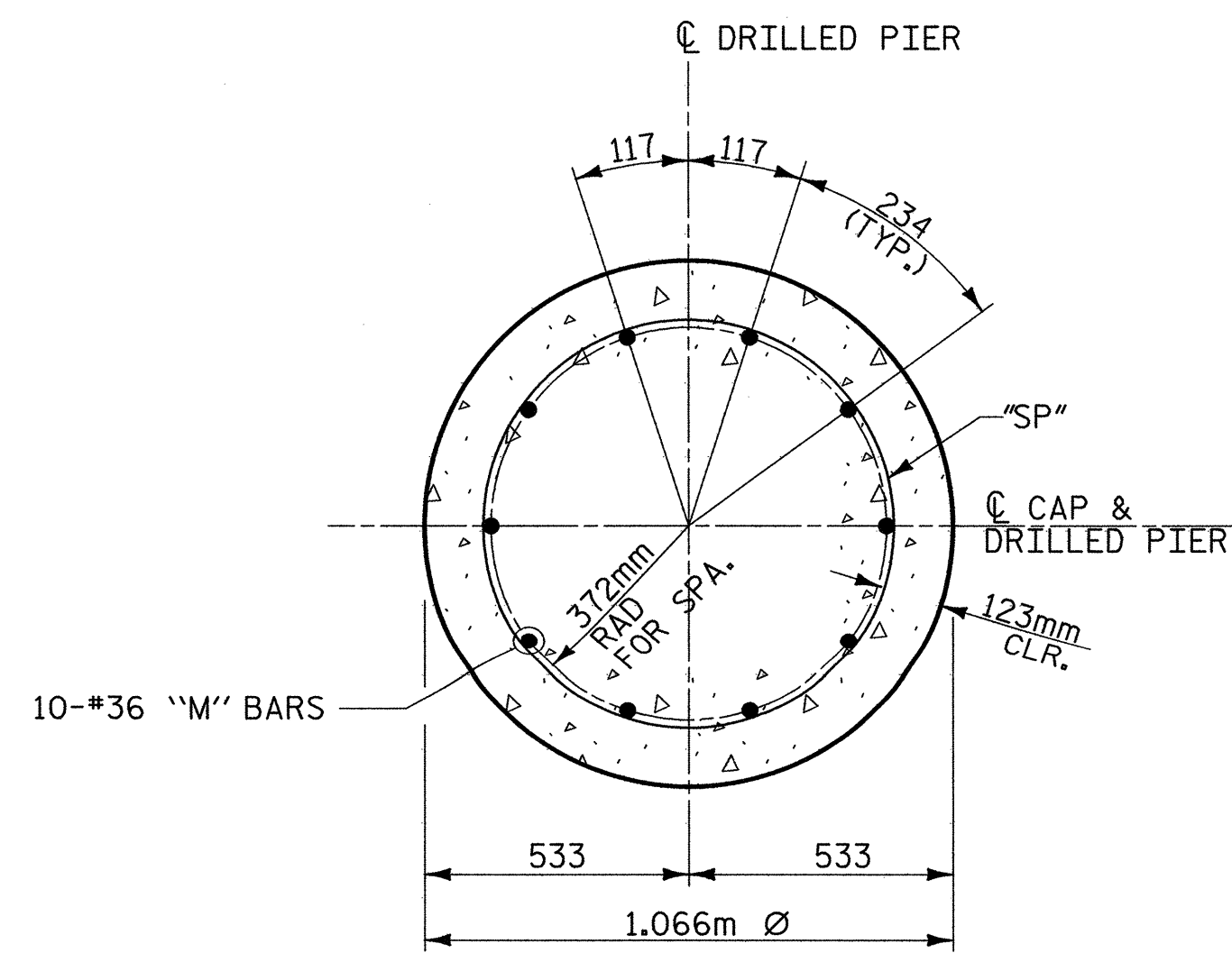
**SECTION B-B**

NOTES:  
 STIRRUPS IN THE CAP MAY BE SHIFTED AS NECESSARY TO CLEAR ANCHOR BOLTS.  
 HOOKS ON "V" BARS MAY BE TURNED AS NECESSARY FOR PLACING REINFORCING STEEL.  
 THE CONTRACTOR'S ATTENTION IS CALLED TO THE FACT THAT THE LONGITUDINAL REINFORCEMENT FOR THE DRILLED PIERS IS DETAILED WITH ONE METER OF EXTRA LENGTH.  
 ALL STEEL IN THE DRILLED PIERS IS INCLUDED IN THE PAY ITEMS FOR "REINFORCING STEEL" AND "SPIRAL COLUMN REINFORCING STEEL".  
 FOR PERMANENT STEEL CASING, SEE SPECIAL PROVISIONS FOR DRILLED PIERS.



**SECTION THRU COLUMN**

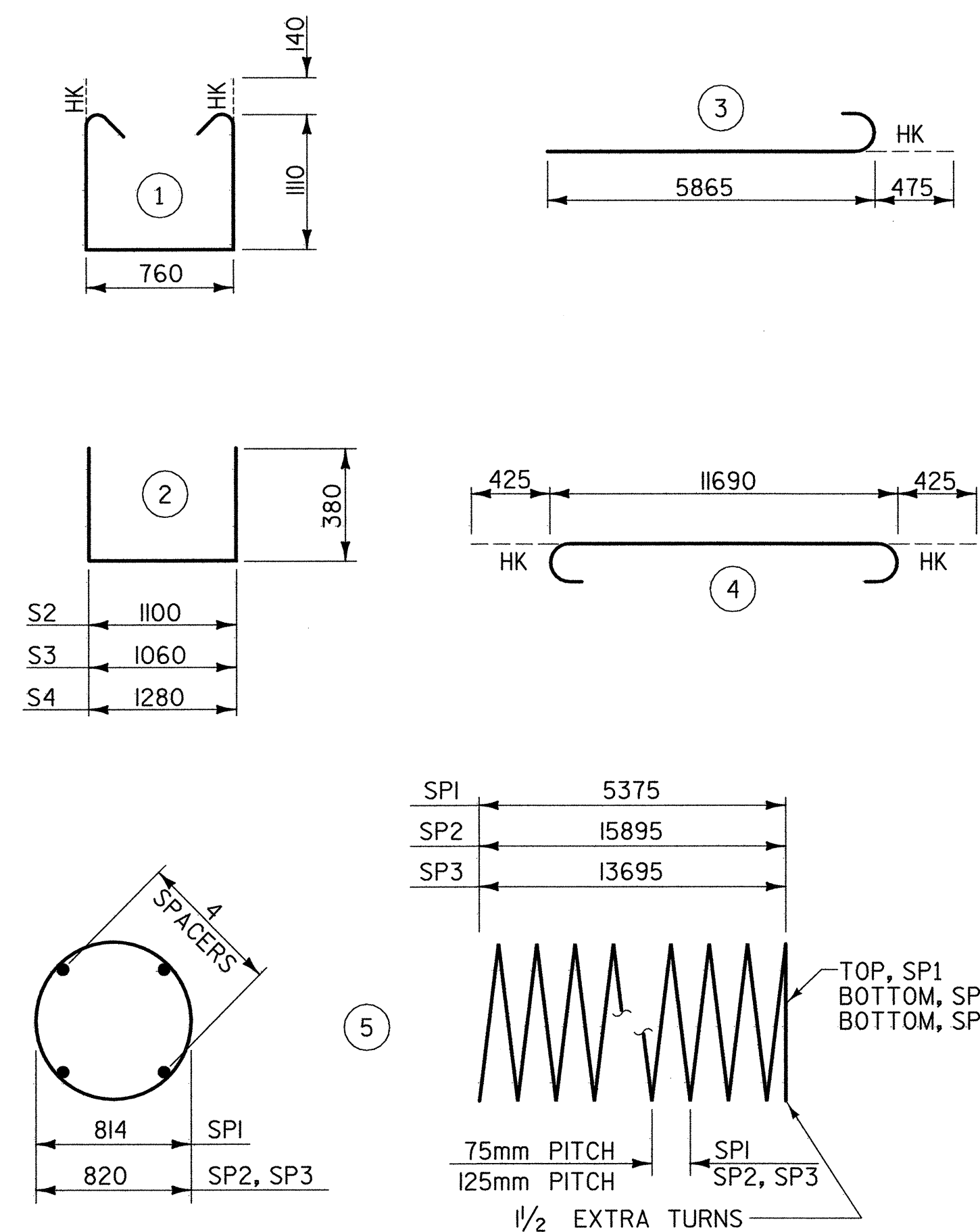
(ALL COLUMNS SIMILAR)  
 (SEE ELEVATION FOR BAR MARKS)



**SECTION THRU DRILLED PIER**

(ALL DRILLED PIERS SIMILAR)  
 (SEE ELEVATION FOR BAR MARKS)

**BAR TYPES**



ALL BAR DIMENSIONS ARE OUT TO OUT

\*\* THE SP1 SPIRAL REINFORCING STEEL SHALL BE W20 OR D-20 COLD DRAWN WIRE OR #13 PLAIN OR DEFORMED BAR  
 THE SP2 & SP3 SPIRAL REINFORCING STEEL SHALL BE W31 OR D-31 COLD DRAWN WIRE OR #16 PLAIN OR DEFORMED BAR

**BILL OF MATERIAL**

FOR BENT 2					
BAR	NO.	SIZE	TYPE	LENGTH	WEIGHT
B1	8	#25	STR	11700	372
B2	6	#32	4	12540	482
B3	6	#13	STR	4600	27
B4	6	#19	STR	11700	157
M1	20	#36	STR	19220	3039
M2	10	#36	STR	17020	1346
S1	80	#16	1	3260	405
S2	33	#13	2	1860	61
S3	14	#13	2	1820	25
S4	4	#13	2	2040	8
V1	30	#36	3	6340	1504
TOTAL REINFORCING STEEL =				7426 kg	
SP1	3	**	5	180198	537
SP2	2	**	5	320781	996
SP3	1	**	5	276382	429
SPIRAL COLUMN REINFORCING STEEL =				1962 kg	
CLASS "A" CONCRETE - CU. METERS					
POUR 2 (COLUMNS)				10.4 C.M.	
POUR 3 (CAP)				18.5 C.M.	
TOTAL				28.9 C.M.	
DRILLED PIER @ BENT 2					
1066mm DIA. DRILLED PIERS IN SOIL =				39.9 LIN M.	
1066mm DIA. DRILLED PIERS NOT IN SOIL =				5.6 LIN M.	
PERMANENT STEEL CASING FOR 1066mm DIA. DRILLED PIER =				9.3 LIN M.	
SID INSPECTION =				1 EA.	
SPT TESTING =				3 EA.	
CROSSHOLE SONIC LOGGING =				1 EA.	
CSL TUBES =				192.5 LIN M.	
DRILLED PIER CONC. (FOR INFORMATION ONLY) =				40.6 C.M.	

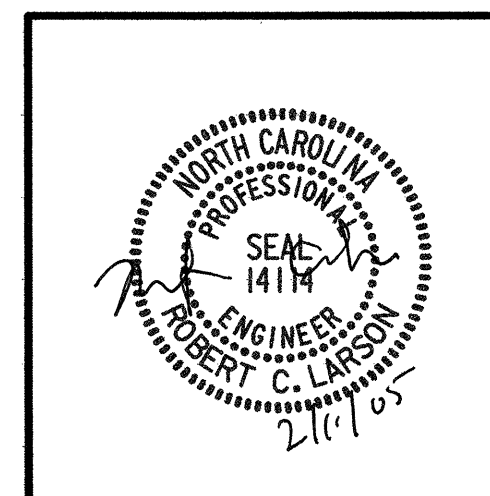


PROJECT NO. R-2552AA  
WAKE - JOHNSTON COUNTY  
 STATION: 14+38.000 -LREV- POT

SHEET 2 OF 2

STATE OF NORTH CAROLINA  
 DEPARTMENT OF TRANSPORTATION  
 RALEIGH

**SUBSTRUCTURE  
 BENT 2  
 (LEFT LANE)**



REVISIONS				SHEET NO.	
NO.	BY:	DATE:	NO.	BY:	DATE:
1			3		
2			4		

TOTAL SHEETS 15  
 SHEET NO. 5-168  
 429

REFERENCE NO. BL-29