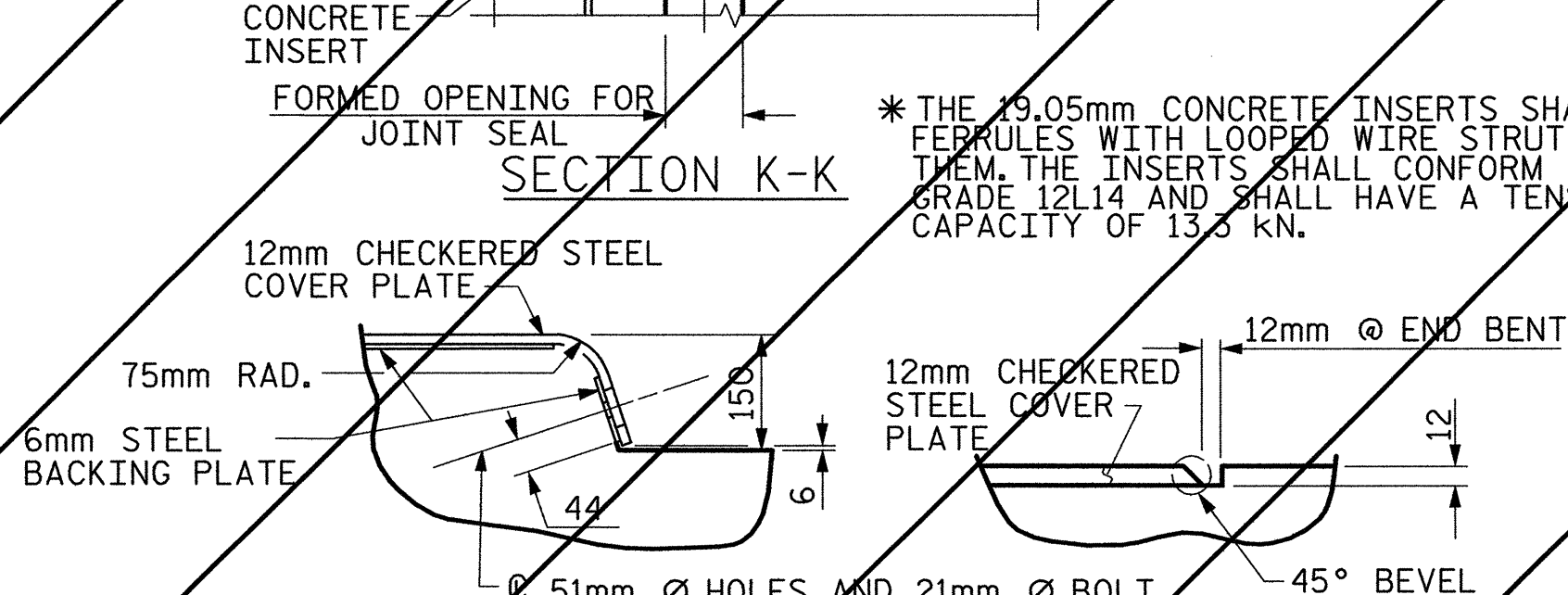
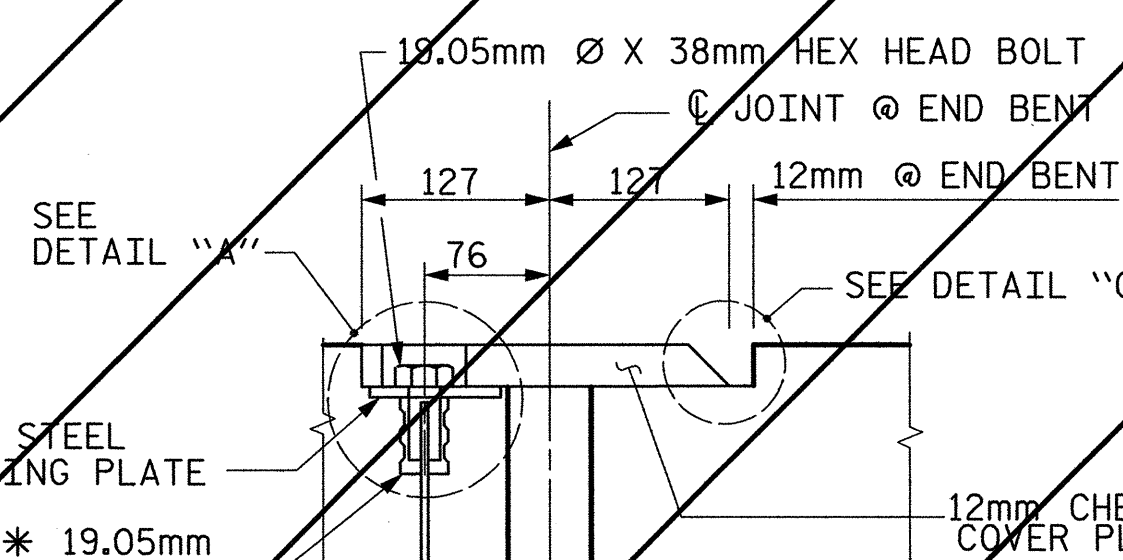
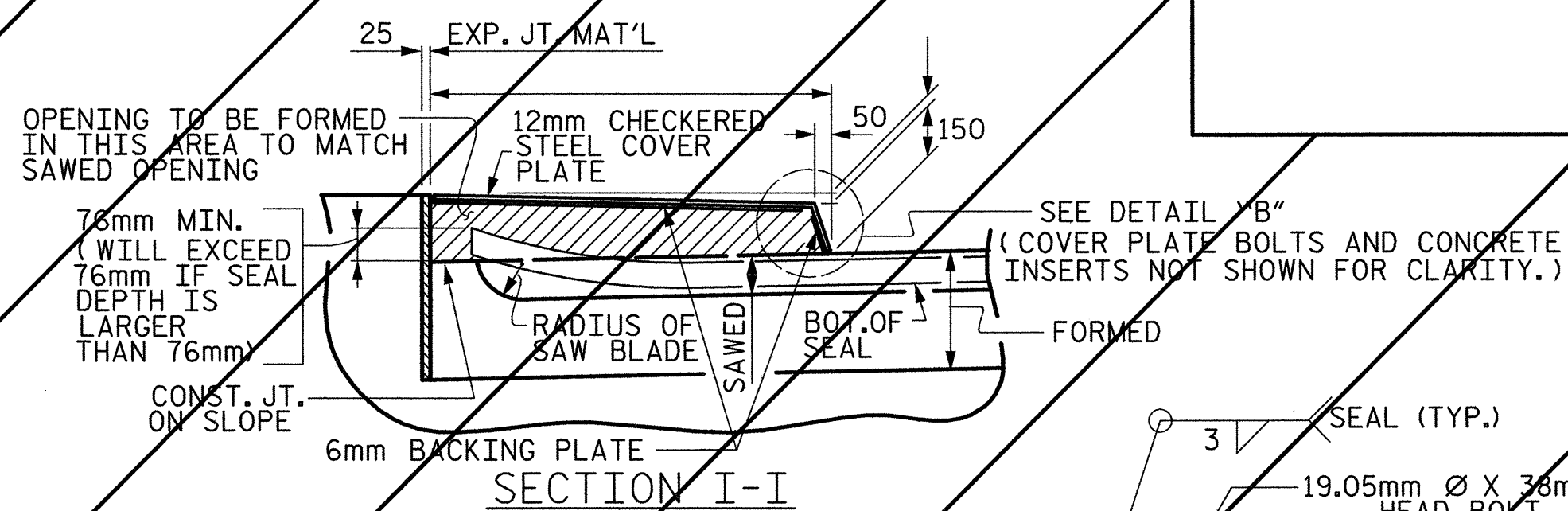
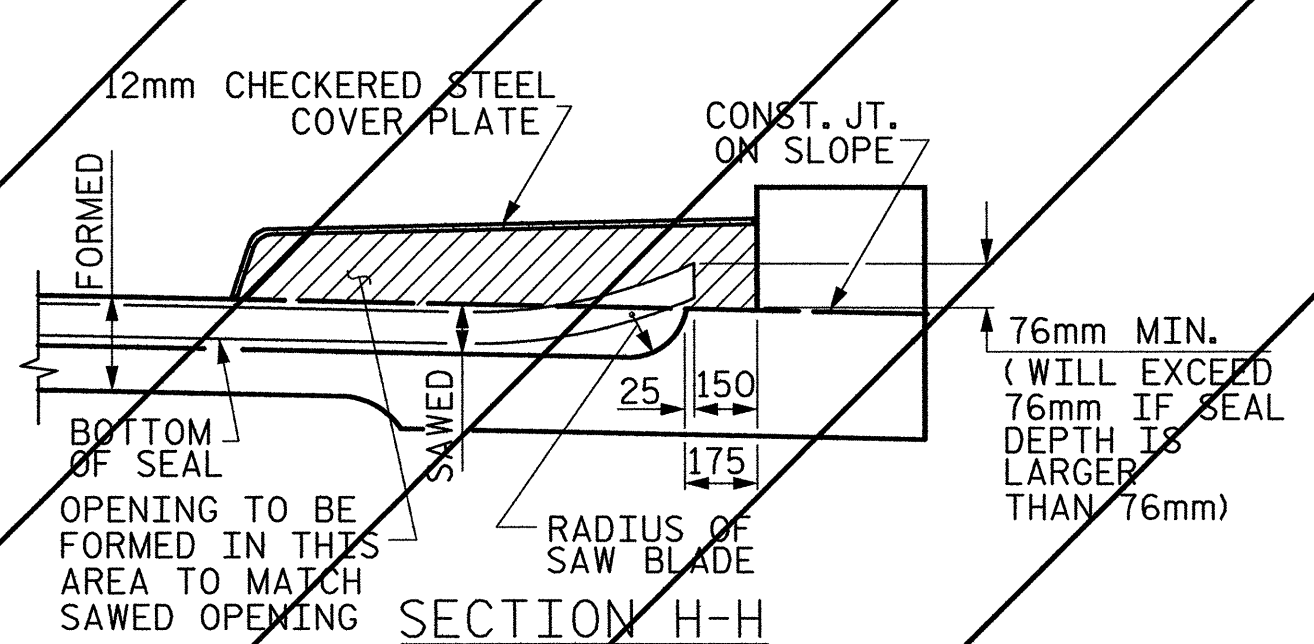
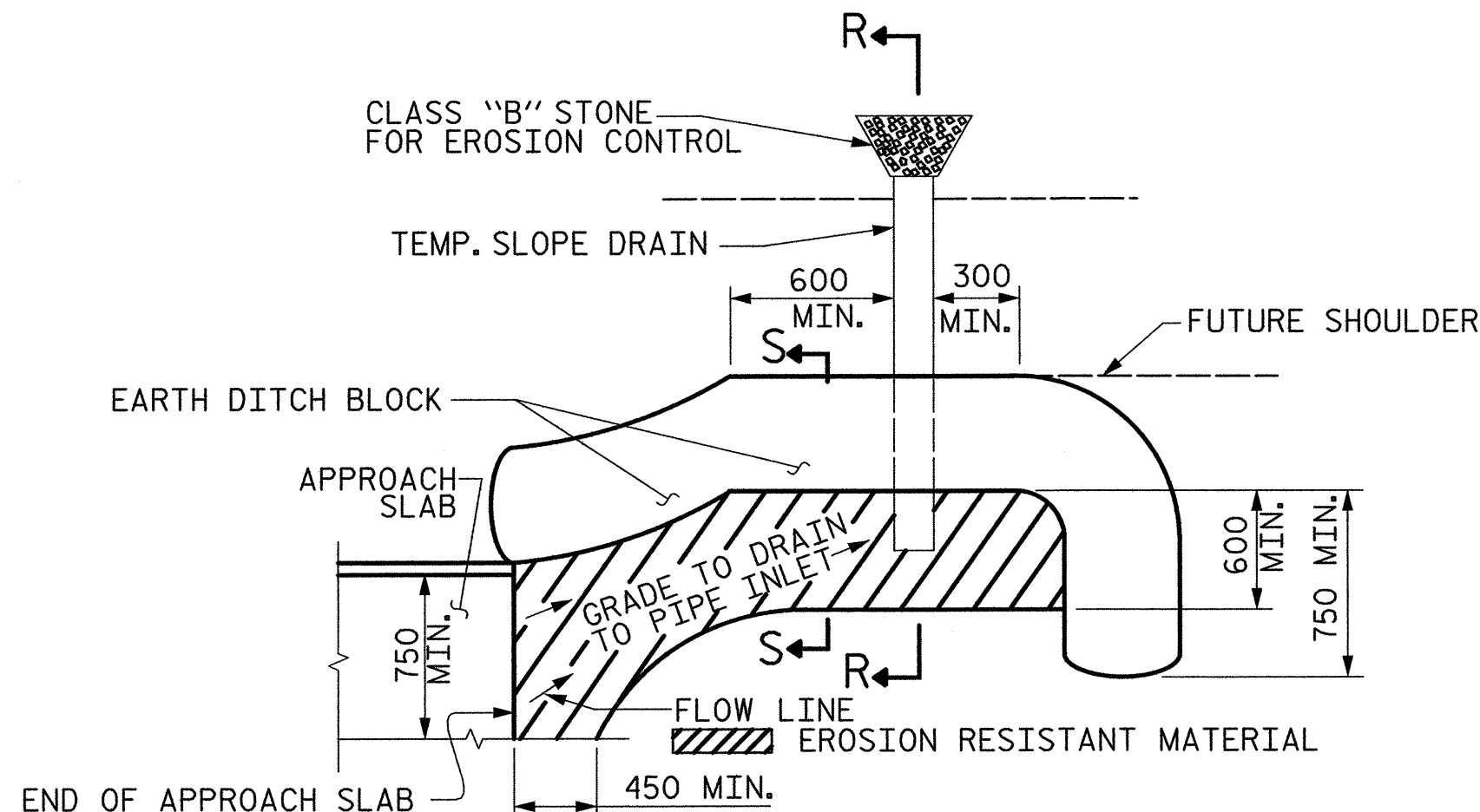


JOINT SEAL DETAILS @ END BENT

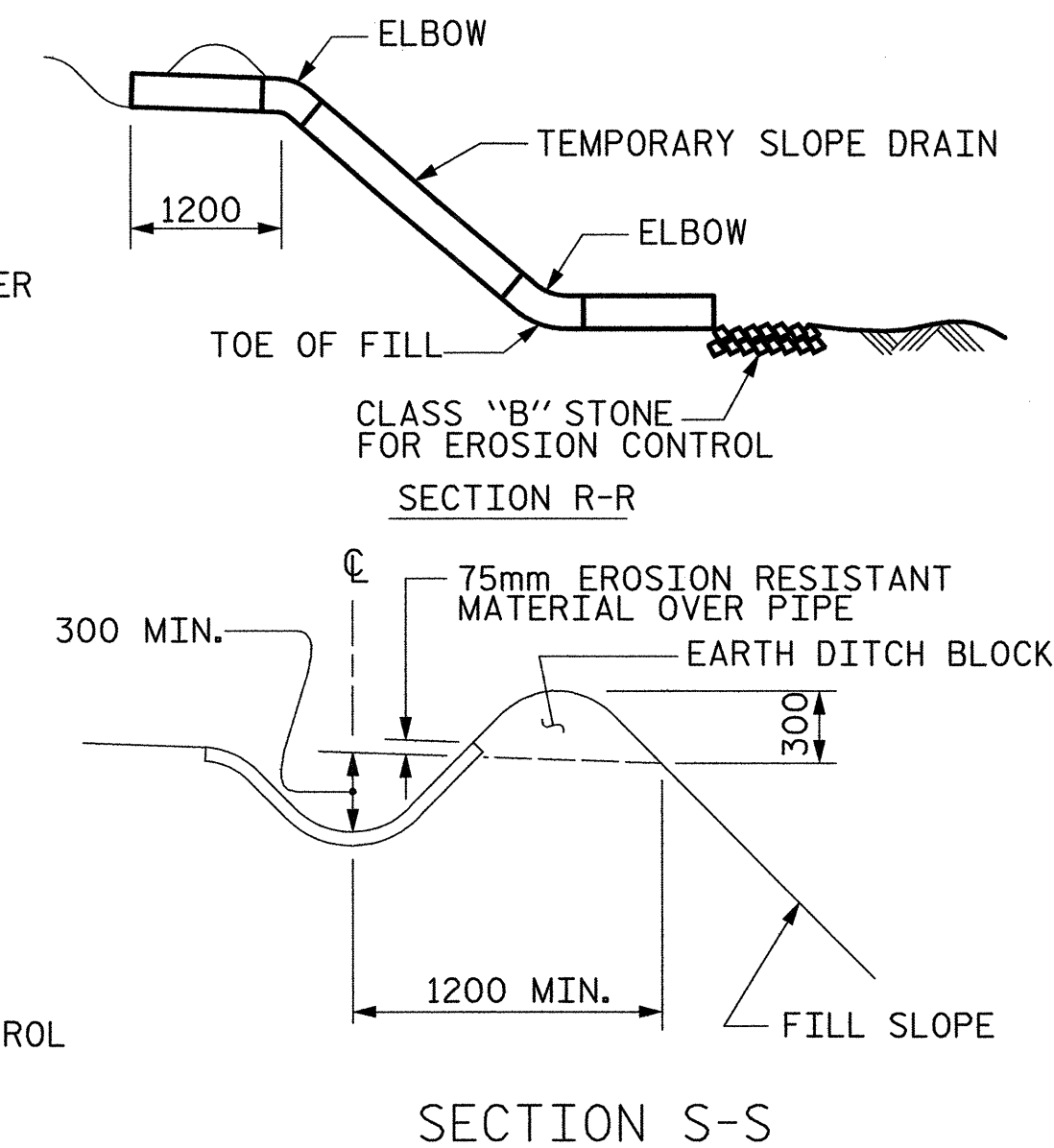


DETAIL "B" JOINT SEAL DETAILS @ END BENT (FOR SIDEWALK)

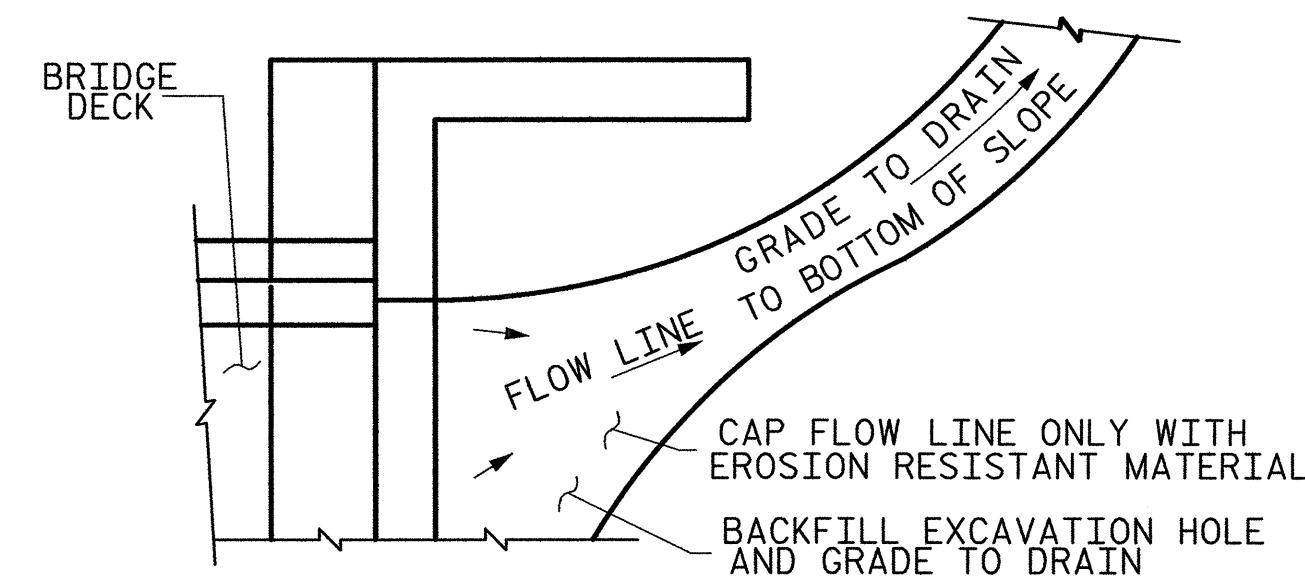
DETAIL "C"



NOTE: IMMEDIATELY AFTER THE CONSTRUCTION OF THE APPROACH SLAB, THE CONTRACTOR SHALL PROVIDE TEMPORARY BERM AND SLOPE DRAIN. CONTRACTOR SHALL GRADE TO PIPE INLET AND PROVIDE EROSION RESISTANT MATERIAL AS SHOWN. THE EROSION RESISTANT MATERIAL SHALL BE EITHER 1) ASPHALT PLANT MIX TYPE 1 OR TYPE 2, MIN. 50mm DEPTH, 2) EROSION CONTROL MAT, OR 3) CONCRETE, AS DIRECTED BY THE ENGINEER. THE SLOPE DRAIN SHALL CONSIST OF A NON-PERFORATED TEMPORARY DRAINAGE PIPE, 305mm IN DIAMETER.

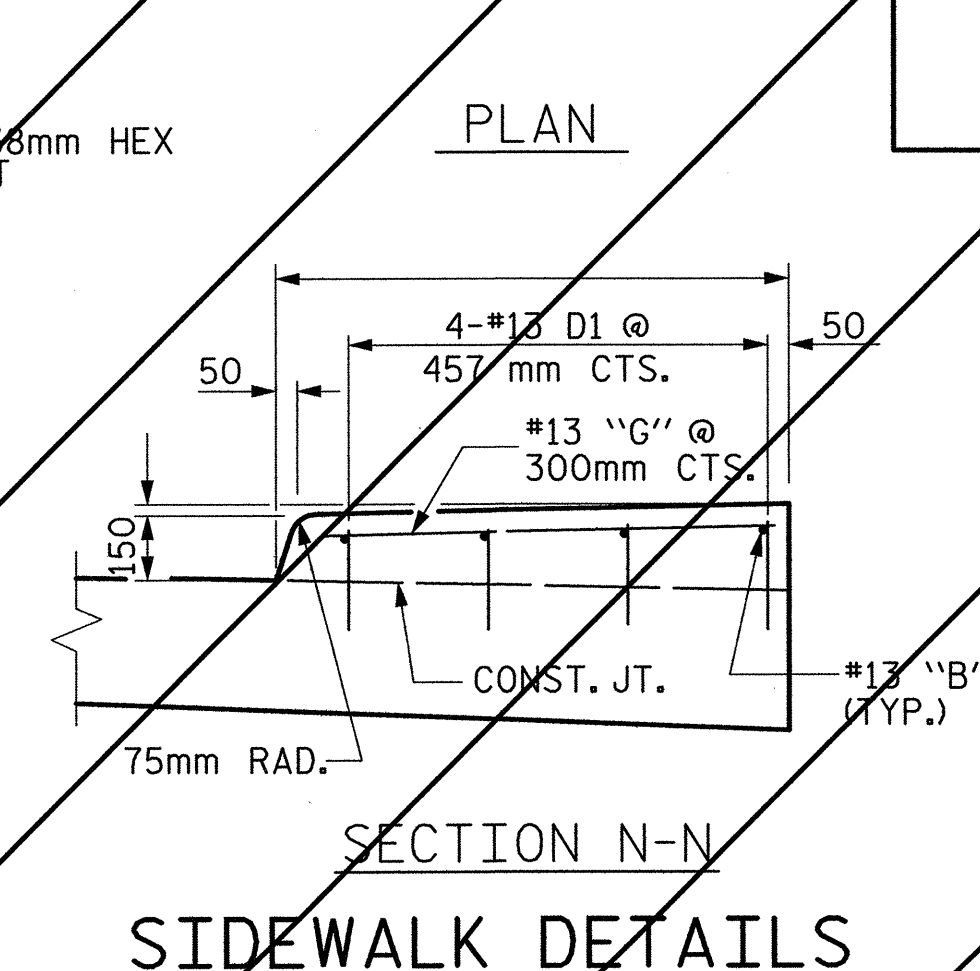


TEMPORARY BERM AND SLOPE DRAIN DETAILS



NOTE: IF THE APPROACH SLAB IS NOT CONSTRUCTED IMMEDIATELY AFTER THE BACKFILLING OF THE END BENT EXCAVATION, GRADE TO DRAIN TO THE BOTTOM OF THE SLOPE AND PROVIDE EROSION RESISTANT MATERIAL, SUCH AS FIBERGLASS ROVING OR AS DIRECTED BY THE ENGINEER TO PREVENT SOIL EROSION AND TO PROTECT THE AREA ADJACENT TO THE STRUCTURE. THE CONTRACTOR WILL BE REQUIRED TO REMOVE THESE MATERIALS PRIOR TO CONSTRUCTION OF THE APPROACH SLAB.

TEMPORARY DRAINAGE DETAIL



SIDEWALK DETAILS

PROJECT NO. R-2552AA  
WAKE - JOHNSTON COUNTY  
STATION: 14+38.000 -LREV- POT  
SHEET 4 OF 4

STATE OF NORTH CAROLINA DEPARTMENT OF TRANSPORTATION RALEIGH				
STANDARD BRIDGE APPROACH SLAB DETAILS (LEFT LANE)				
STD. NO. BAS10SM				
REVISIONS				
NO.	BY:	DATE:	NO.	DATE:
1			3	
2			4	
				SHEET NO. 5-183 TOTAL SHEETS 429

THIS STANDARD DRAWING REVIEWED & ADOPTED FOR USE AT THE REFERENCED LOCATION BY THE UNDERSIGNED:



REFERENCE NO. BL-44

02/04/2005 09:59:28 PM G:\VPROJ\04\21301R-2552A\STRUCTURE\85\Fig 4\LeF1.Lane\2552AA.SD.AS.04.dgn

ASSEMBLED BY : W. B. ALLEN	DATE : 10/04
CHECKED BY : R. C. LARSON	DATE : 12/04
DRAWN BY : FCJ 11/88	REV. 8/16/99 RAL/LES
CHECKED BY : ARB 11/88	REV. 10/17/00 RHW/LES
	REV. 5/7/03 RHW/JTE