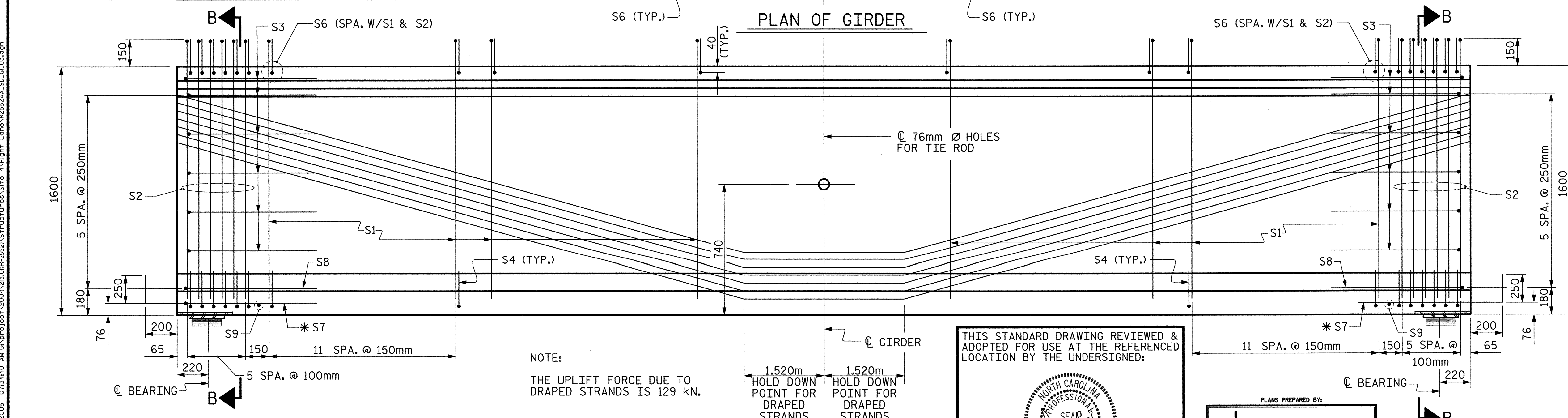
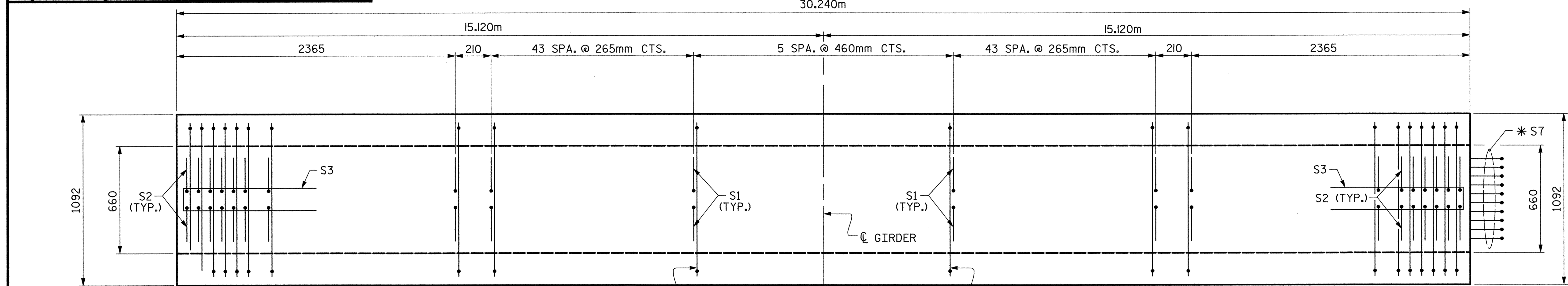
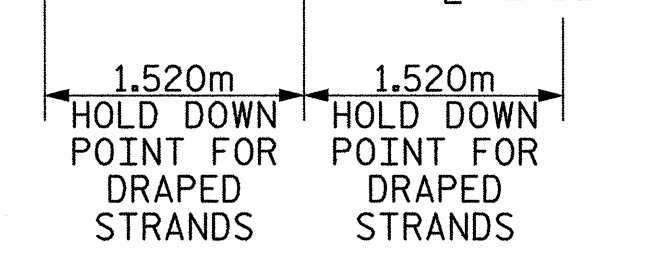


12.70mm Ø L. R. GRADE 270 STRANDS					
AREA (mm ²)	ULTIMATE STRENGTH (KN PER STRAND)	APPLIED PRESTRESS (KN PER STRAND)			
98.71	183.7	137.8			
REINFORCING STEEL FOR ONE GIRDER					
BAR	NUMBER	SIZE	TYPE	LENGTH	WEIGHT
S1	232	#13	1	1860	429
S2	24	#16	1	1860	69
S3	12	#13	2	2560	31
S4	72	#13	3	920	66
S5	1	#16	2	3000	5
S6	256	#16	1	1140	453
*S7	20	#16	STR	1120	35
S8	2	#16	2	2740	9
S9	2	#10	STR	560	1
* NOTE: S7 BARS SHALL BE BENT BEFORE SHIPMENT. HEAT BENDING SHALL NOT BE ALLOWED.					
BAR TYPES					
ALL BAR DIMENSIONS ARE OUT-TO-OUT					



NOTE: THE UPLIFT FORCE DUE TO DRAPED STRANDS IS 129 KN.



THIS STANDARD DRAWING REVIEWED & ADOPTED FOR USE AT THE REFERENCED LOCATION BY THE UNDERSIGNED:

ROBERT C. LARSON
 PROFESSIONAL ENGINEER
 SEAP 14114
 2/14/05

PLANS PREPARED BY:

MULKEY
 ENGINEERS & CONSULTANTS
 P.O. Box 38157
 Raleigh, NC 27636
 (919) 851-1918 (FAX)
 WWW.MULKEYINC.COM

QUANTITIES FOR ONE GIRDER			
SPAN	REINFORCING STEEL	50.0 MPa CONCRETE	12.70mm Ø L.R. STRANDS
	kg	m ³	No.
B&E	1098	15.0	50

GIRDERS REQUIRED			
SPAN	NUMBER	LENGTH	TOTAL LENGTH
B&E	8	30.240m	241.920m

PROJECT NO. R-2552AA
 WAKE - JOHNSTON COUNTY
 STATION: 14+38.000 -LREV- POT
 SHEET 3 OF 5

STATE OF NORTH CAROLINA
 DEPARTMENT OF TRANSPORTATION
 RALEIGH
 STANDARD
 1600mm PRESTRESSED CONCRETE
 MODIFIED BULB TEE
 CONTINUOUS FOR LIVE LOAD
 SPANS B&E (RIGHT LANE)
 STD. NO. PCG9SM

REVISIONS				SHEET NO. S-198
NO.	BY:	DATE:	NO.	
1			3	TOTAL SHEETS 429
2			4	

02/04/2005 07:34:40 AM G:\p\proj\2004\23101R-2552A\Structures\Site A\Right Lane R2552AA_SD.GI.03.dgn

ASSEMBLED BY: J. P. SHERMAN DATE: 6/04
 CHECKED BY: R. C. LARSON DATE: 8/04
 DRAWN BY: EEM 2/6/97 REV. 7/17/98 RWW/LES
 CHECKED BY: VAP 2/6/97 REV. 3/16/99 RWW/LES
 REV. 10/11/00 RWW/LES

REFERENCE NO. BR-15