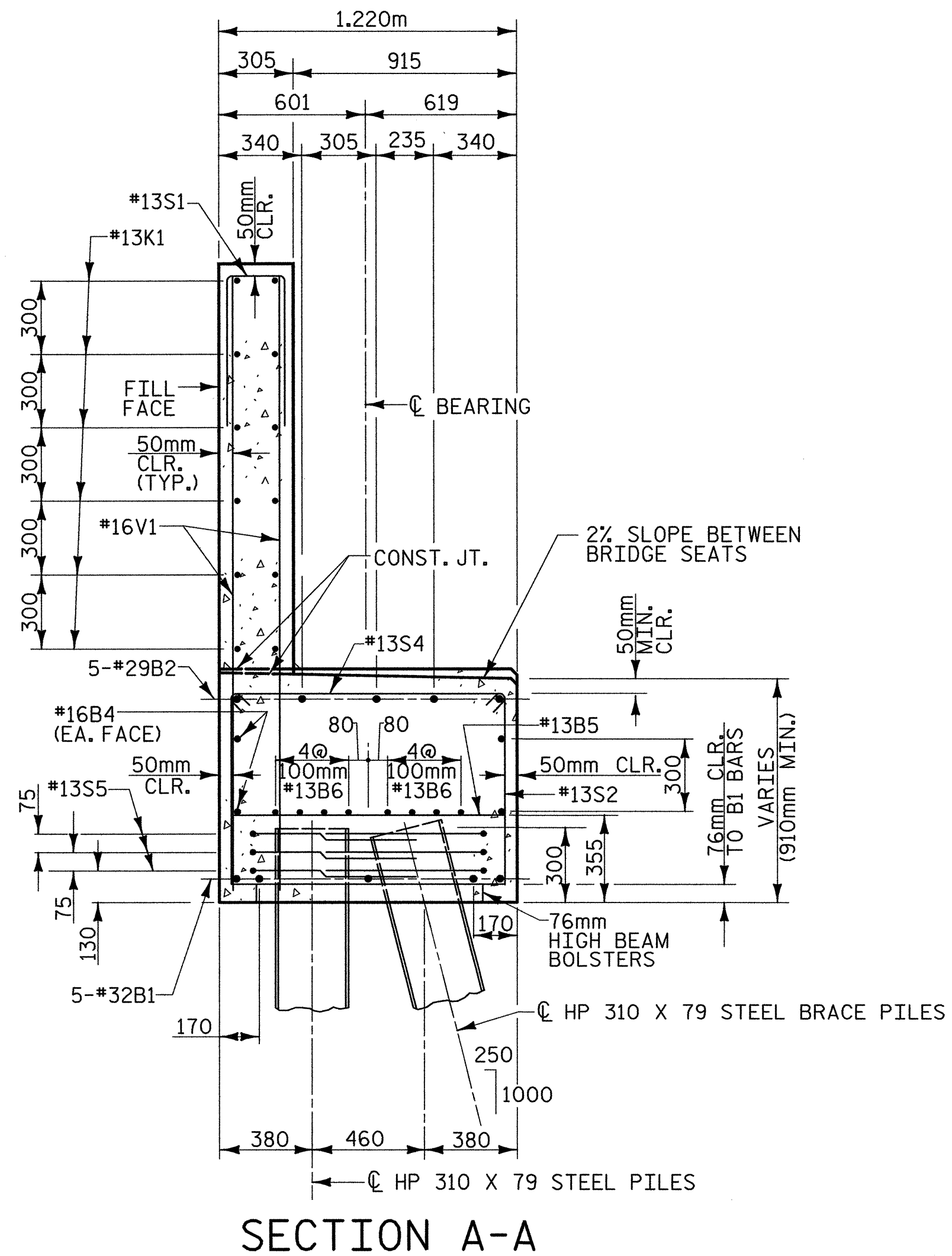


BAGGED STONE AND PIPE SHALL BE PLACED IMMEDIATELY AFTER COMPLETION OF END BENT EXCAVATION. PIPE MAY BE EITHER CONCRETE, CORRUGATED STEEL, CORRUGATED ALUMINUM ALLOY, OR CORRUGATED PLASTIC. PERFORATED PIPE WILL NOT BE ALLOWED.

BAGGED STONE SHALL REMAIN IN PLACE UNTIL THE ENGINEER DIRECTS THAT IT BE REMOVED. THE CONTRACTOR SHALL REMOVE AND DISPOSE OF SILT ACCUMULATIONS AT BAGGED STONE WHEN SO DIRECTED BY THE ENGINEER. BAGS SHALL BE REMOVED AND REPLACED WHENEVER THE ENGINEER DETERMINES THAT THEY HAVE DETERIORATED AND LOST THEIR EFFECTIVENESS.

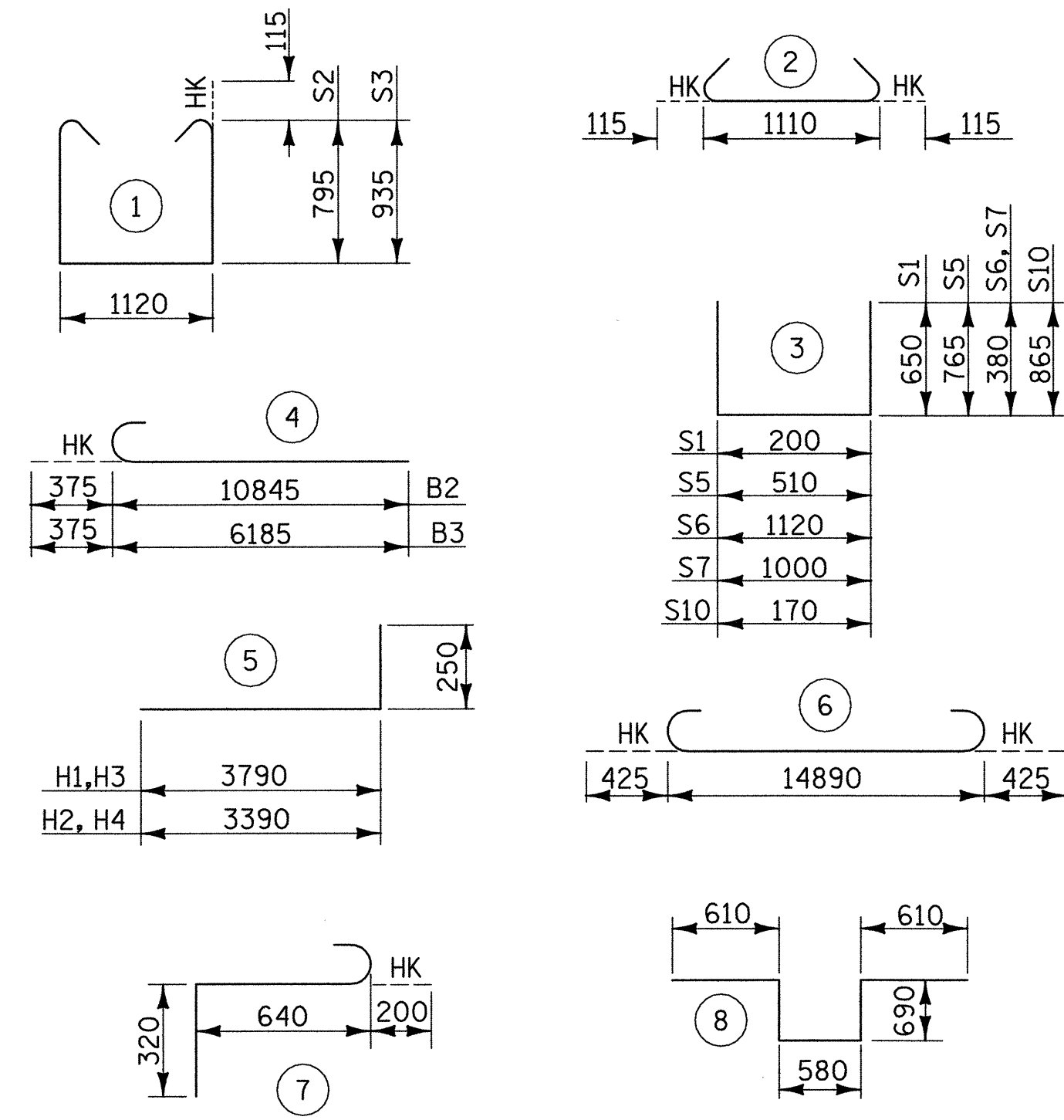
NO SEPARATE PAYMENT WILL BE MADE FOR THIS WORK AND THE ENTIRE COST OF THIS WORK SHALL BE INCLUDED IN THE UNIT CONTRACT PRICE FOR THE SEVERAL PAY ITEMS.

### TEMPORARY DRAINAGE AT END BENT



SECTION A-A

### BAR TYPES

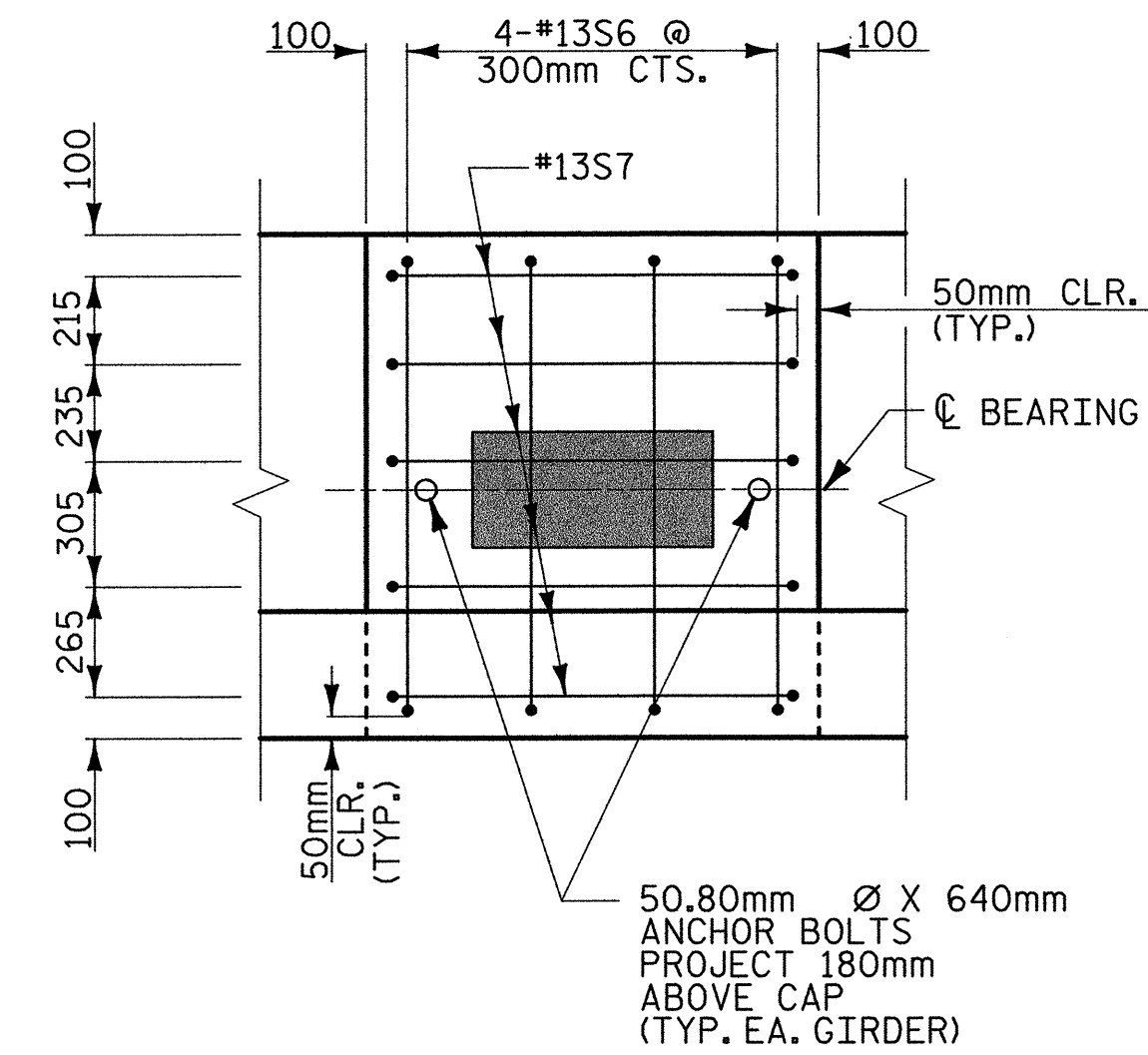


ALL BAR DIMENSIONS ARE OUT TO OUT

### BILL OF MATERIAL

| FOR END BENT 1 |     |      |      |        |        |
|----------------|-----|------|------|--------|--------|
| BAR            | NO. | SIZE | TYPE | LENGTH | WEIGHT |
| B1             | 5   | #32  | 6    | 15740  | 504    |
| B2             | 5   | #29  | 4    | 11220  | 223    |
| B3             | 5   | #29  | 4    | 6560   | 130    |
| B4             | 4   | #16  | STR  | 14880  | 92     |
| B5             | 13  | #13  | STR  | 1120   | 14     |
| B6             | 16  | #13  | STR  | 7820   | 124    |
| H1             | 20  | #13  | 5    | 4040   | 80     |
| H2             | 20  | #13  | 5    | 3640   | 72     |
| H3             | 4   | #16  | 5    | 4040   | 25     |
| H4             | 4   | #16  | 5    | 3640   | 23     |
| K1             | 24  | #13  | STR  | 7820   | 187    |
| S1             | 44  | #13  | 3    | 1500   | 66     |
| S2             | 26  | #13  | 1    | 2940   | 76     |
| S3             | 18  | #13  | 1    | 3220   | 58     |
| S4             | 44  | #13  | 2    | 1340   | 59     |
| S5             | 30  | #13  | 3    | 2040   | 61     |
| S6             | 8   | #13  | 3    | 1880   | 15     |
| S7             | 10  | #13  | 3    | 1760   | 17     |
| S8             | 2   | #19  | 8    | 3180   | 14     |
| S9             | 6   | #19  | 7    | 1160   | 16     |
| S10            | 4   | #13  | 3    | 1900   | 8      |
| V1             | 88  | #16  | STR  | 2440   | 333    |
| V2             | 14  | #16  | STR  | 3100   | 67     |
| V3             | 21  | #13  | STR  | 3100   | 65     |
| V4             | 20  | #16  | STR  | 2840   | 88     |
| V5             | 22  | #13  | STR  | 2840   | 62     |

|                                 |                 |
|---------------------------------|-----------------|
| TOTAL REINFORCING STEEL =       | 2479 kg         |
| CLASS "A" CONCRETE - CU. METERS |                 |
| POUR 1                          | 20.7 cu. m      |
| POUR 2                          | 12.5 cu. m      |
| TOTAL                           | 33.2 cu. m      |
| HP 310 X 79 STEEL PILES         |                 |
| 12 PILES REQUIRED -             | 204 LIN. METERS |



### SEAT DETAIL

(TYP. SEATS 1 & 3)



PROJECT NO. R-2552AA  
 WAKE - JOHNSTON COUNTY  
 STATION: 14+38.000 -LREV- POT

SHEET 3 OF 3

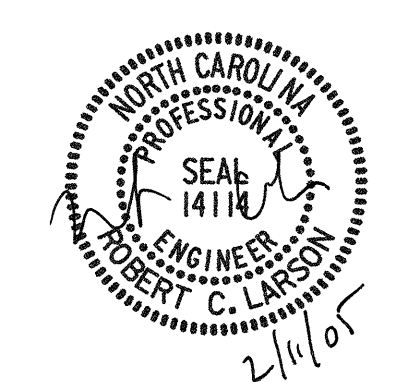
STATE OF NORTH CAROLINA  
 DEPARTMENT OF TRANSPORTATION  
 RALEIGH

### SUBSTRUCTURE END BENT 1 (RIGHT LANE)

#### REVISIONS

| NO. | BY: | DATE: | NO. | BY: | DATE: | SHEET NO. |
|-----|-----|-------|-----|-----|-------|-----------|
| 1   |     |       | 3   |     |       | 5-206     |
| 2   |     |       | 4   |     |       | 429       |

REFERENCE NO. BR-25



02/04/2005 03:26:48 PM G:\pco\l\2004\231\01R-2552A\Structures\Site 4\Right Lane\R2552AA\_SD.El.03.dgn

DRAWN BY : J. P. SHERMAN DATE : 12/04  
 CHECKED BY : R. C. LARSON DATE : 12/04