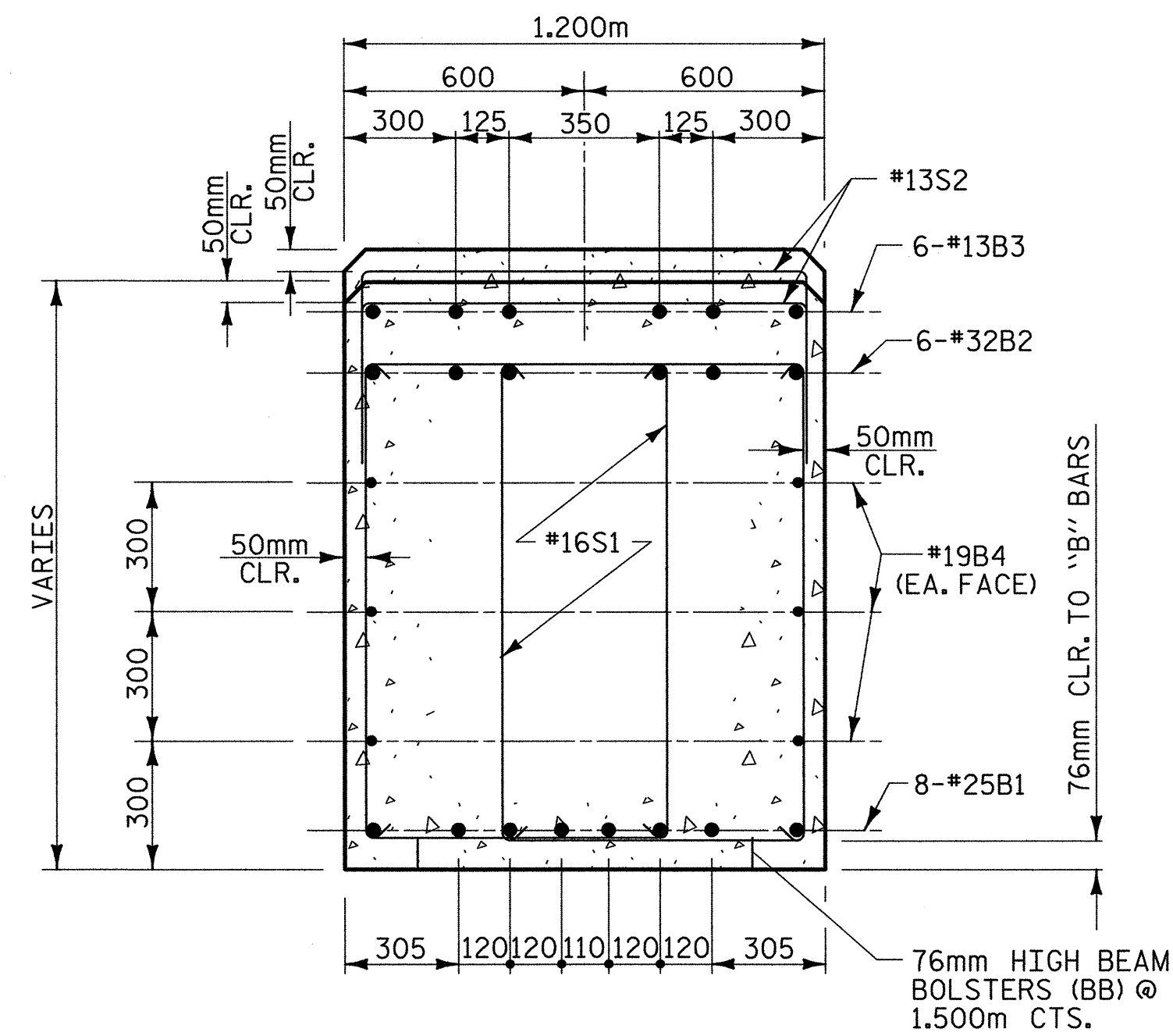
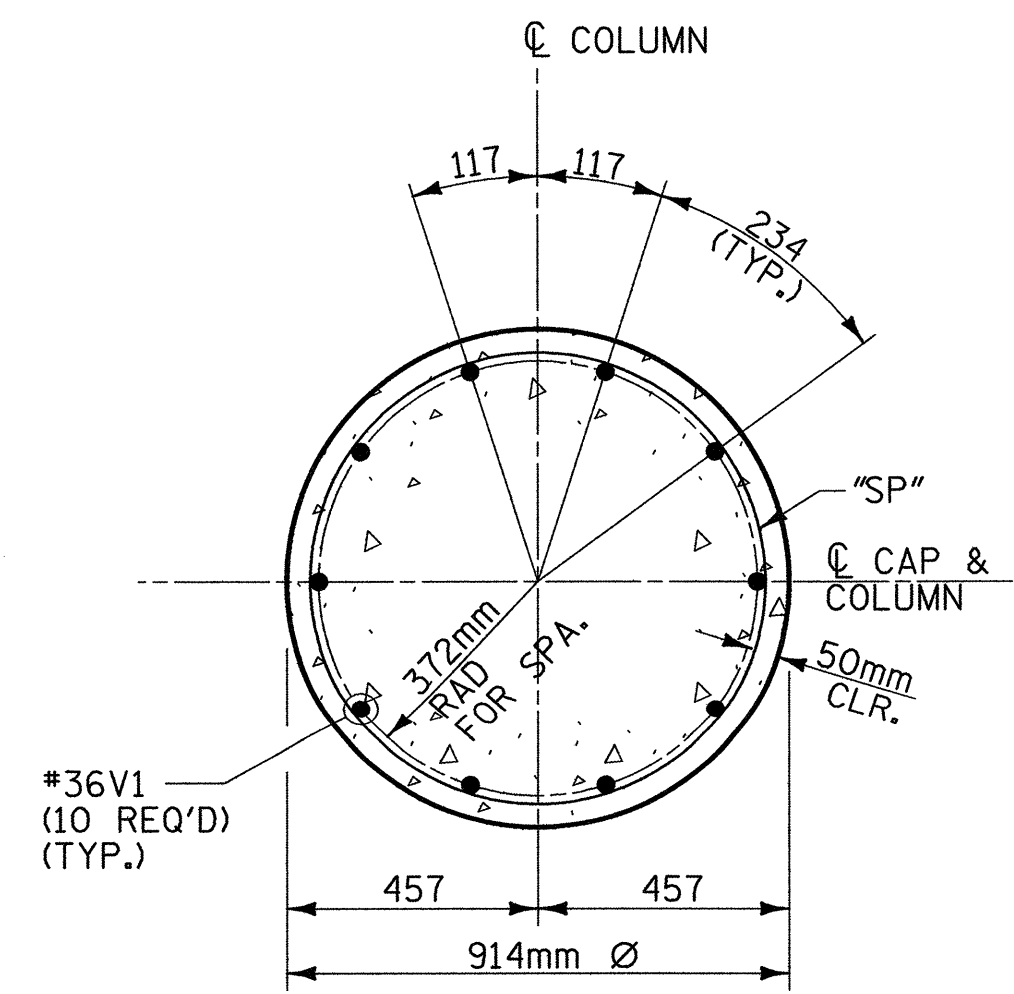


SECTION A-A

NOTES:
 STIRRUPS IN THE CAP MAY BE SHIFTED AS NECESSARY TO CLEAR ANCHOR BOLTS.
 HOOKS ON "V" BARS MAY BE TURNED AS NECESSARY FOR PLACING REINFORCING STEEL.
 THE CONTRACTOR'S ATTENTION IS CALLED TO THE FACT THAT THE LONGITUDINAL REINFORCEMENT FOR THE DRILLED PIERS IS DETAILED WITH ONE METER OF EXTRA LENGTH.
 ALL STEEL IN THE DRILLED PIERS IS INCLUDED IN THE PAY ITEMS FOR "REINFORCING STEEL" AND "SPIRAL COLUMN REINFORCING STEEL".

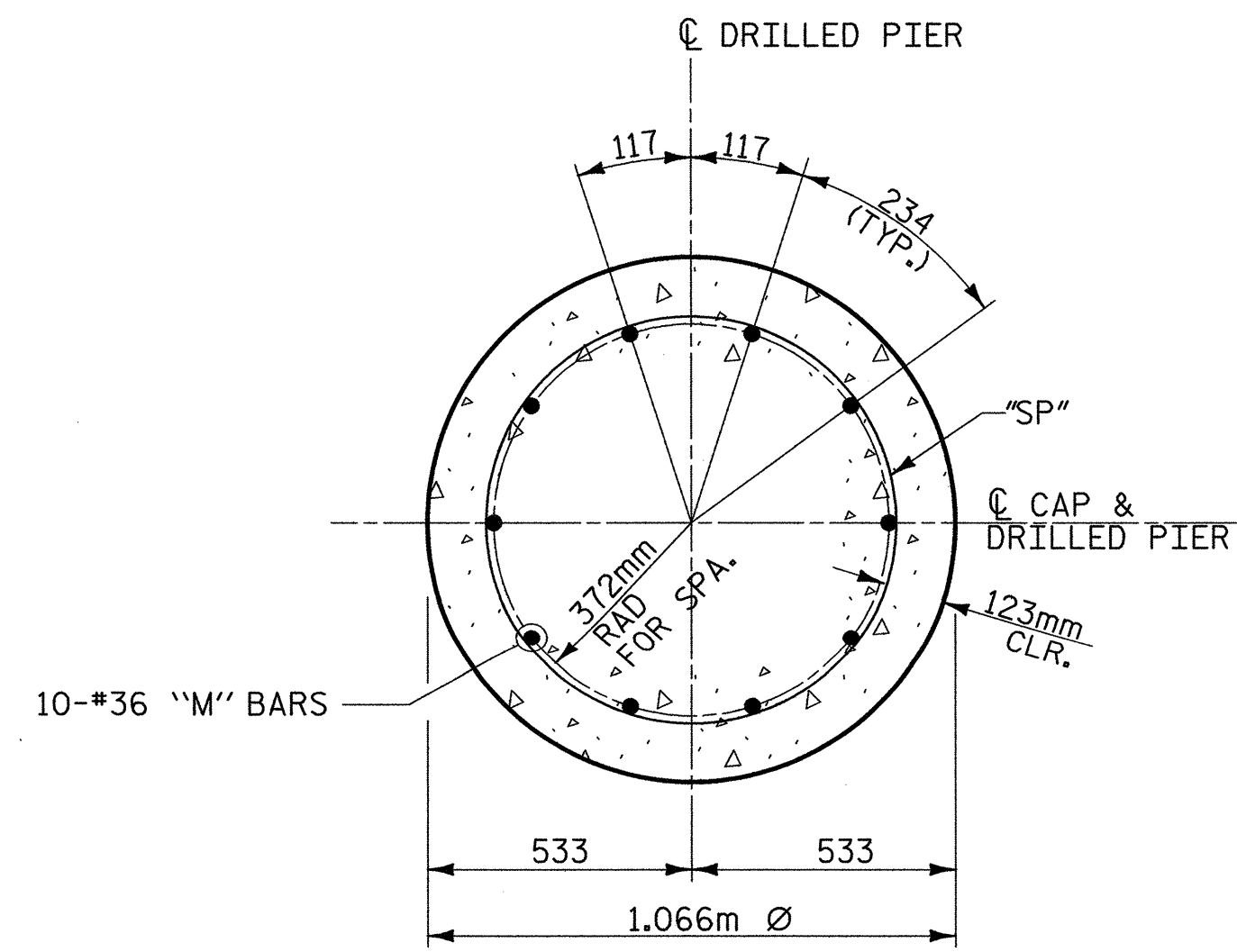


SECTION B-B



SECTION THRU COLUMN

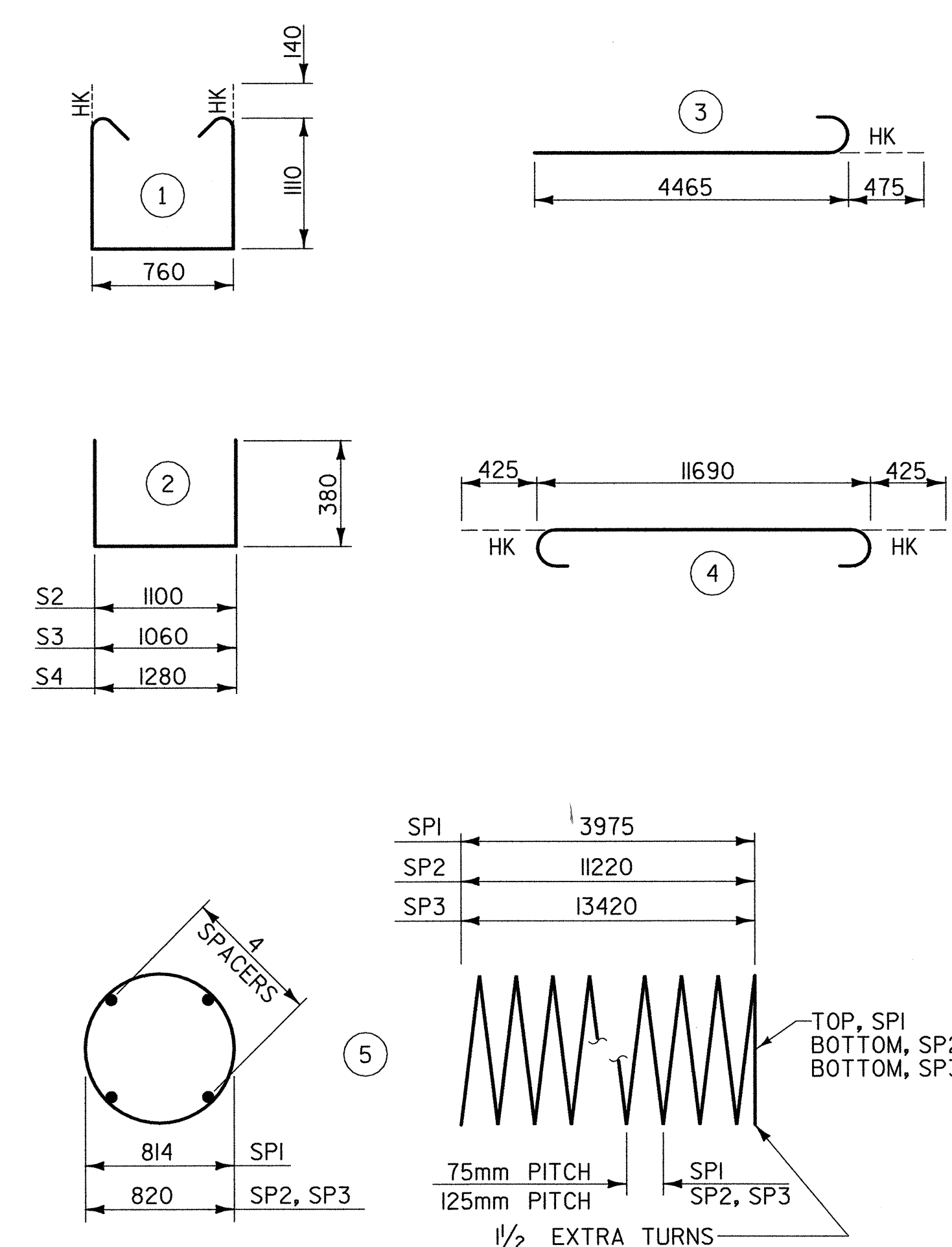
(ALL COLUMNS SIMILAR)
 (SEE ELEVATION FOR BAR MARKS)



SECTION THRU DRILLED PIER

(ALL DRILLED PIERS SIMILAR)
 (SEE ELEVATION FOR BAR MARKS)

BAR TYPES



ALL BAR DIMENSIONS ARE OUT TO OUT

** THE SP1 SPIRAL REINFORCING STEEL SHALL BE W20 OR D-20 COLD DRAWN WIRE OR #13 PLAIN OR DEFORMED BAR
 THE SP2 & SP3 SPIRAL REINFORCING STEEL SHALL BE W31 OR D-31 COLD DRAWN WIRE OR #16 PLAIN OR DEFORMED BAR

BILL OF MATERIAL

FOR BENT 5					
BAR	NO.	SIZE	TYPE	LENGTH	WEIGHT
B1	8	#25	STR	11700	372
B2	6	#32	4	12540	482
B3	6	#13	STR	4600	27
B4	6	#19	STR	11700	157
M1	10	#36	STR	14540	1150
M2	20	#36	STR	16740	2647
S1	80	#16	1	3260	405
S2	33	#13	2	1860	61
S3	14	#13	2	1820	25
S4	4	#13	2	2040	8
VI	30	#36	3	4940	1172
TOTAL REINFORCING STEEL =					6506 kg
SPIRAL COLUMN REINFORCING STEEL =					1589 kg
CLASS "A" CONCRETE - CU. METERS					
POUR 2 (COLUMNS)					7.7 C.M.
POUR 3 (CAP)					18.5 C.M.
TOTAL					26.2 C.M.
DRILLED PIER @ BENT 5					
1066mm DIA. DRILLED PIERS IN SOIL =					34.6 LIN M.
1066mm DIA. DRILLED PIERS NOT IN SOIL =					3.5 LIN M.
SID INSPECTION =					1 EA.
SPT TESTING =					3 EA.
CROSSHOLE SONIC LOGGING =					1 EA.
CSL TUBES =					162.8 LIN M.
DRILLED PIER CONC. (FOR INFORMATION ONLY) =					34.0 C.M.

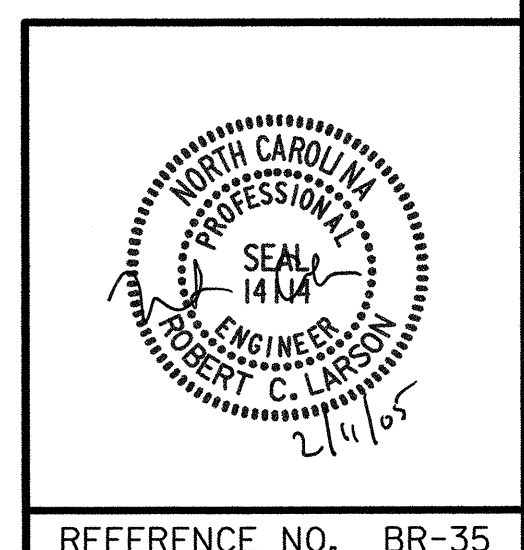


PROJECT NO. R-2552AA
WAKE - JOHNSTON COUNTY
 STATION: 14+38.000 -LREV- POT

SHEET 2 OF 2

STATE OF NORTH CAROLINA
 DEPARTMENT OF TRANSPORTATION
 RALEIGH

**SUBSTRUCTURE
 BENT 5
 (RIGHT LANE)**



REVISIONS						SHEET NO.
NO.	BY:	DATE:	NO.	BY:	DATE:	TOTAL SHEETS
1			3			3-218
2			4			429

REFERENCE NO. BR-35

02/04/2005 07:50:47 AM G:\p\c\l\2004\23\01R-2552\Structures\Site A\Right Lane\2552AA_SD_BE_02.dgn

DRAWN BY: J. P. SHERMAN DATE: 11/04
 CHECKED BY: R. C. LARSON DATE: 12/04