

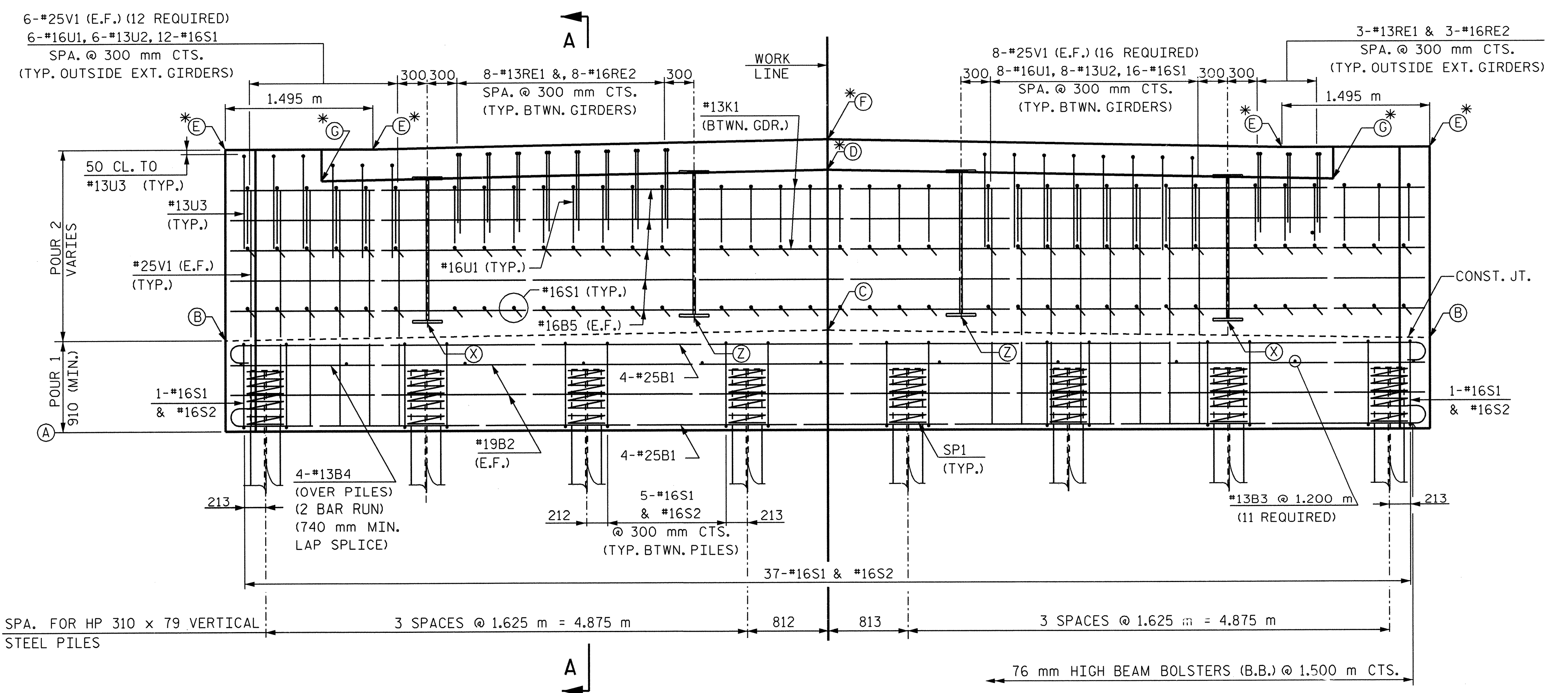
PLAN

NOTES:

FOR SECTION A-A, PILE SPLICE DETAILS AND NOTES, SEE "END BENT 1 DETAILS" SHEET, SHEET 2 OF 3.
 FOR TEMPORARY DRAINAGE, SEE "END BENT 2 DETAILS" SHEET, SHEET 2 OF 3.

ELEVATION TABLE	
A	84.175
B	85.085
C	85.207
* D	86.758
* E	86.971
* F	87.063
* G	86.656
X	85.276
Z	85.330

* AT FILL FACE



ELEVATION

FOR DESCRIPTION AND LOCATION OF REINFORCING STEEL IN SUPERSTRUCTURE SLAB, SEE "TYPICAL SECTION" SHEET.

PROJECT NO. R-2552AA
 WAKE / JOHNSTON COUNTY
 STATION: 27+61.028 -L- P.O.T.

SHEET 1 OF 3

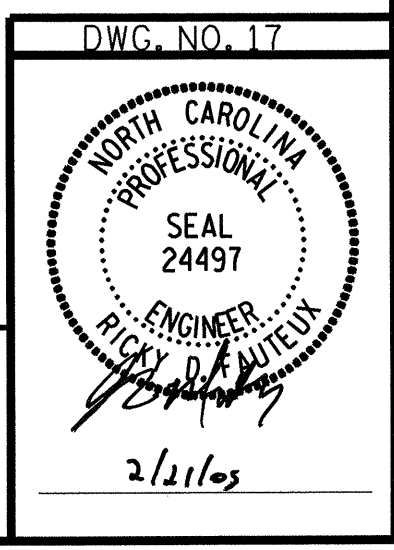
STATE OF NORTH CAROLINA
 DEPARTMENT OF TRANSPORTATION
 RALEIGH

SUBSTRUCTURE
END BENT 1

JANUARY 2005

REVISIONS		SHEET NO.	
NO.	BY:	DATE:	NO.
1			3
2			4

TOTAL SHEETS: 429



RUMMELKLEPPER & KAHL, LLP
 consulting engineers
 5800 FARLINGTON PLACE - SUITE 105
 RALEIGH, NORTH CAROLINA 27609-3960

G:\COMMONS\304046\BRIDGE\SITES\DN\FINAL\ R2552AA_SD_EB11_05.DGN

DRAWN BY: B. PARRISH DATE: 01/05
 CHECKED BY: R. D. FAUTEUX DATE: 01/05