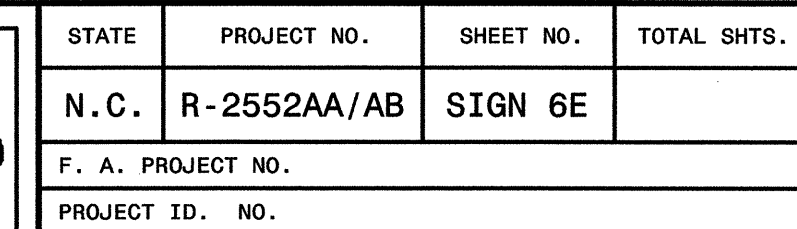


2



1. IF THE CONTRACTOR BIDS ALUMINUM SIGN STRUCTURE, EACH SHALL BE PROVIDED WITH AN APPROVED HIGHWAY TRUSS DAMPER DEVICE IN ACCORDANCE WITH AASHTO SPECIFICATIONS.
2. MOUNT SIGNS VERTICALLY CENTERED ON HORIZONTAL MEMBER OF STRUCTURE.
3. FIELD VERIFICATION SHALL BE REQUIRED FOR ALL FOOTING ELEVATIONS, PER THE LATEST NCDOT STANDARD SPECIFICATIONS FOR ROADS AND STRUCTURES.
4. THE TOP OF THE FOOTING SHALL EXTEND AT LEAST 152mm AND NOT MORE THAN 610mm ABOVE THE HIGHEST POINT OF THE GROUND SURFACE AT THE FOOTING.
5. SIGN HANGERS, LUMINAIRE RETRIEVAL SYSTEM AND ATTACHMENT HARDWARE SHALL BE PROVIDED AND INSTALLED ON THE ASSEMBLY TO ACCOMMODATE ALL SIGNS SHOWN IN THE PLANS, INCLUDING THOSE DESIGNATED AS "FUTURE".

HNTE

Clayton Bypass - I-40 @ US-70
OVERHEAD SIGN ASSEMBLY "H"
US-70 EASTBOUND

SCALE	NONE	N. C. DEPARTMENT OF TRANSPORTATION DIVISION OF HIGHWAYS TRAFFIC ENGINEERING BRANCH	REVISIONS	
DATE	01/2005			
DWG. BY	TRT			
DESIGN BY	TRT			
APPROVED	CAJ			

