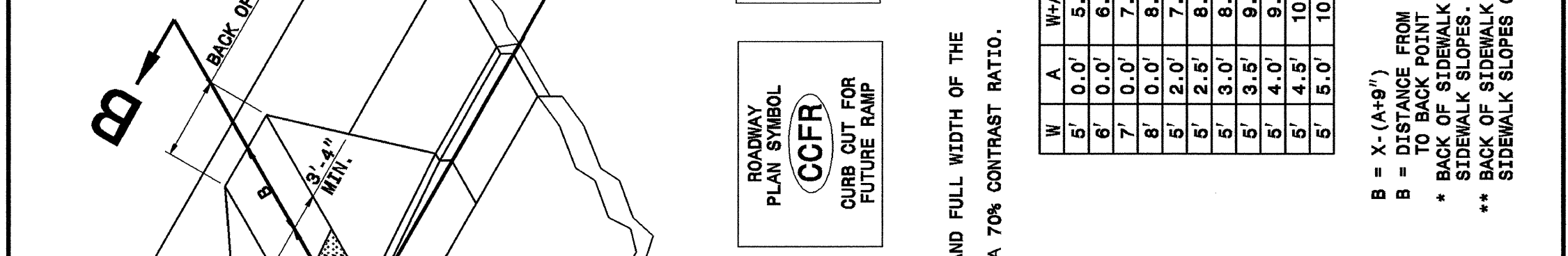
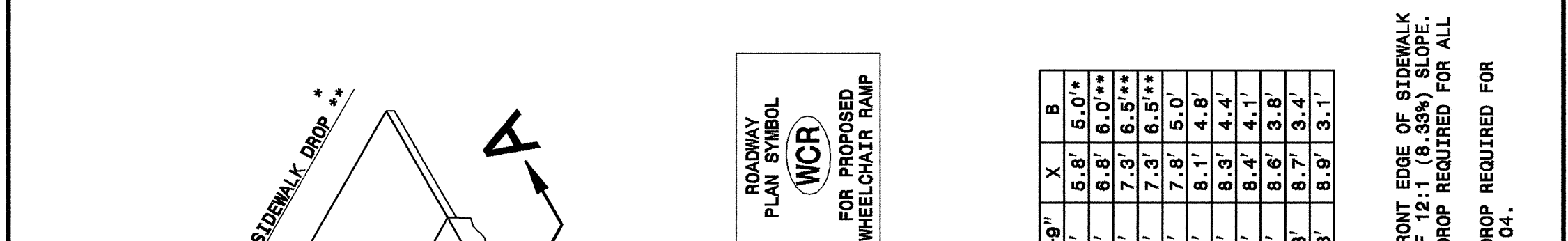
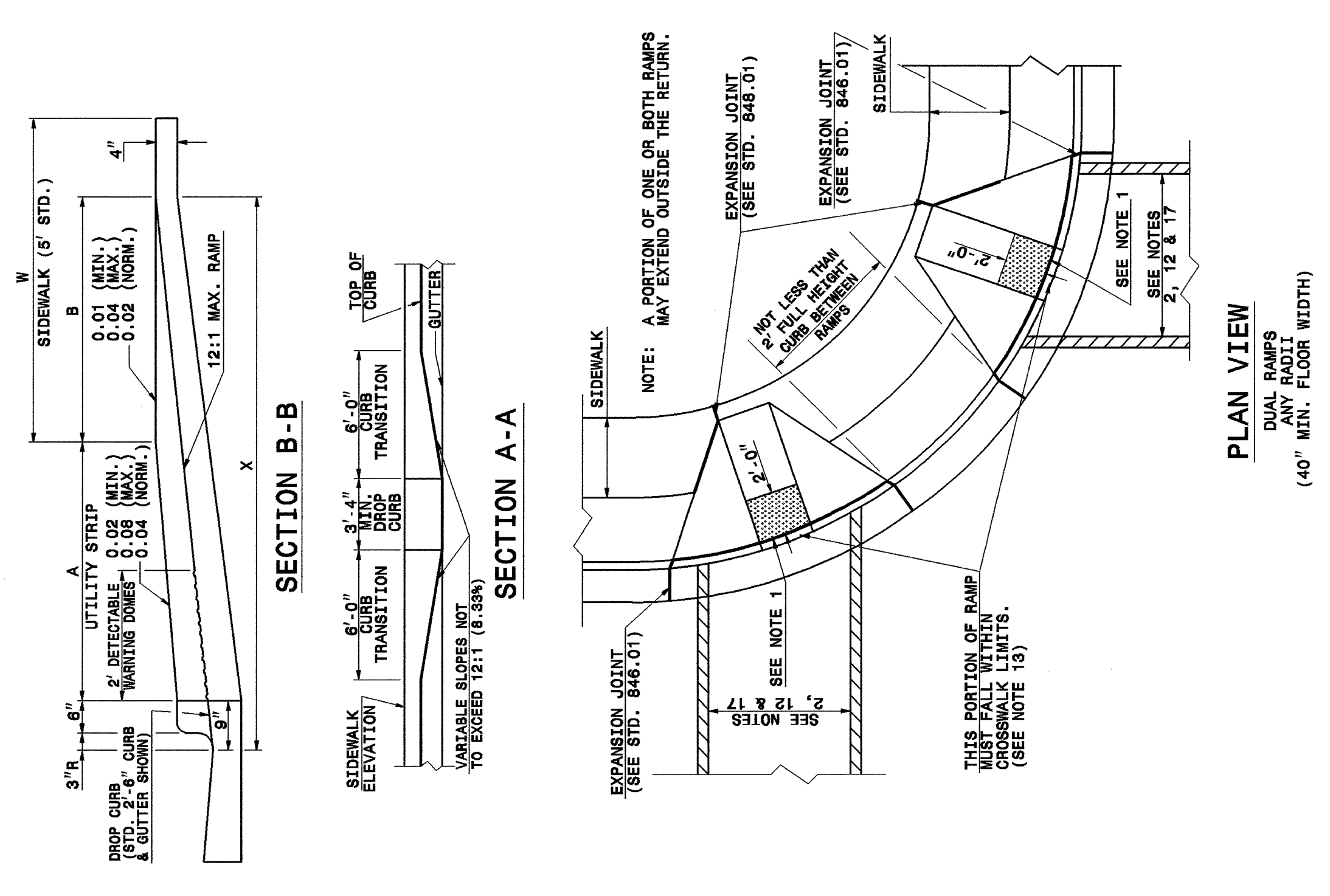


STATE OF NORTH CAROLINA DEPT. OF TRANSPORTATION DIVISION OF HIGHWAYS RALEIGH, N.C.

ENGLISH DETAIL DRAWING FOR WHEELCHAIR RAMP CURB CUT

SHEET 1 OF 4 848D05



ISOMETRIC VIEW

DETECTABLE WARNING DOMES

ROADWAY PLAN SYMBOL (CCFR) CURB CUT FOR FUTURE RAMP

ROADWAY PLAN SYMBOL (WCR) FOR PROPOSED WHEELCHAIR RAMP

NOTES:
 1. DETECTABLE WARNING DOMES SHALL COVER 2'-0" LENGTH AND FULL WIDTH OF THE RAMP FLOOR AS SHOWN ON THE DETAILS.
 2. THE RAMP MAY BE YELLOW IN COLOR OR ANY COLOR WITH A 70% CONTRAST RATIO.

B = X - (A+B)
 * DISTANCE FROM FRONT EDGE OF SIDEWALK TO BACK OF CURB OR 2' (3.5% SLOPE).
 * BACK OF SIDEWALK DROP REQUIRED FOR ALL SIDEWALK SLOPES.
 ** BACK OF SIDEWALK DROP REQUIRED FOR SIDEWALK SLOPES 0.04.

STATE OF NORTH CAROLINA DEPT. OF TRANSPORTATION DIVISION OF HIGHWAYS RALEIGH, N.C.

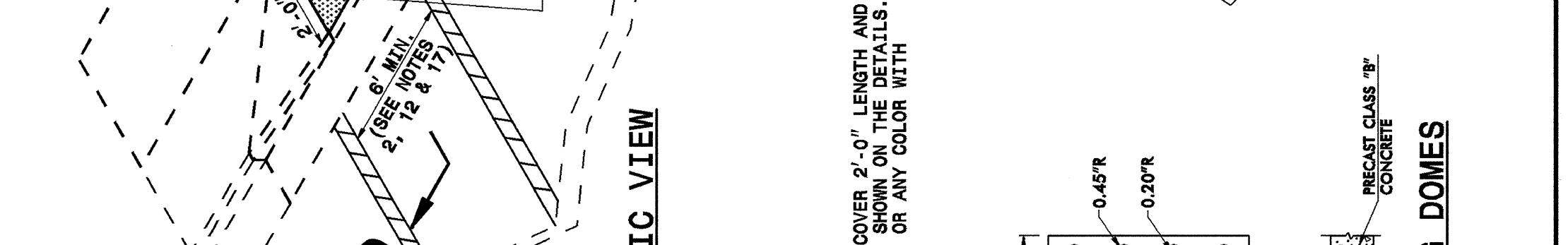
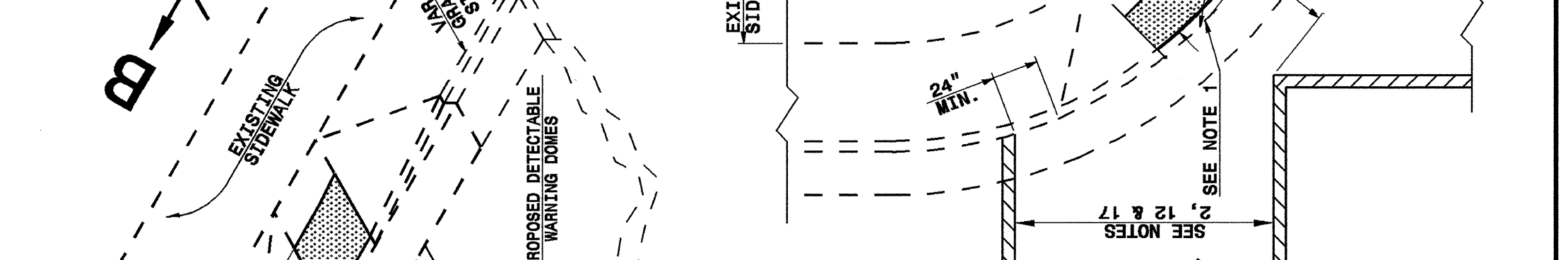
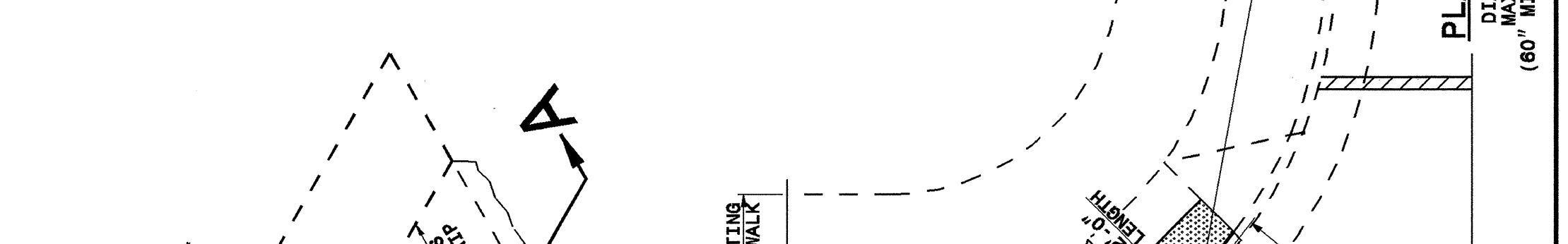
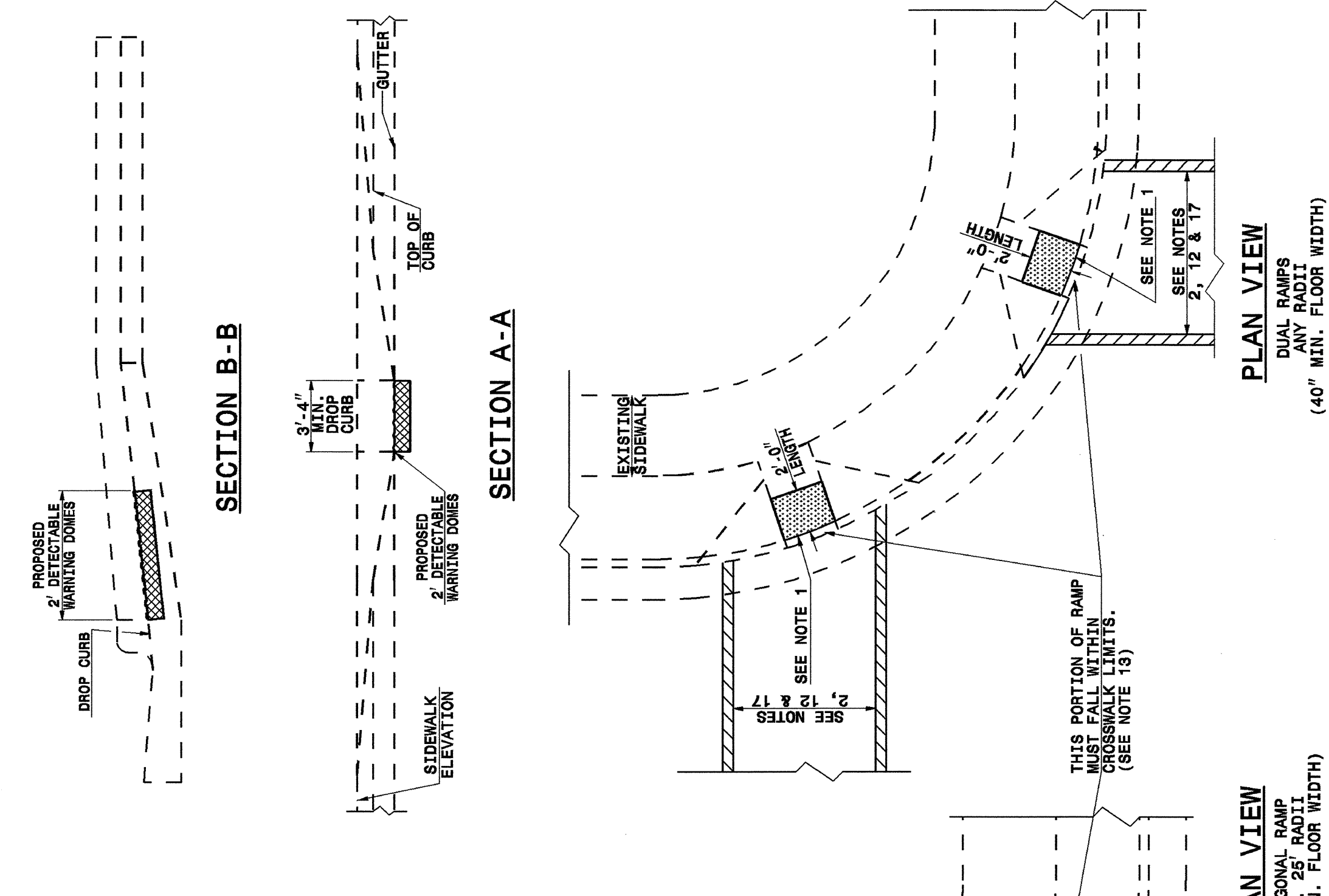
ENGLISH DETAIL DRAWING FOR WHEELCHAIR RAMP CURB CUT

SHEET 1 OF 4 848D05

STATE OF NORTH CAROLINA DEPT. OF TRANSPORTATION DIVISION OF HIGHWAYS RALEIGH, N.C.

ENGLISH DETAIL DRAWING FOR RETROFITTING DETECTABLE WARNING RAMP ONTO EXISTING WHEELCHAIR RAMP CURB CUT

SHEET 2 OF 4 848D05



ISOMETRIC VIEW

DETECTABLE WARNING DOMES

ROADWAY PLAN SYMBOL (CCFR) CURB CUT FOR FUTURE RAMP

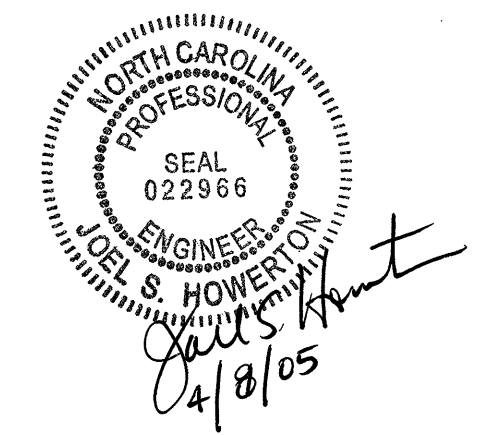
ROADWAY PLAN SYMBOL (WCR) FOR PROPOSED WHEELCHAIR RAMP

NOTES:
 1. DETECTABLE WARNING DOMES SHALL COVER 2'-0" LENGTH AND FULL WIDTH OF THE RAMP FLOOR AS SHOWN ON THE DETAILS.
 2. THE RAMP MAY BE YELLOW IN COLOR OR ANY COLOR WITH A 70% CONTRAST RATIO.

STATE OF NORTH CAROLINA DEPT. OF TRANSPORTATION DIVISION OF HIGHWAYS RALEIGH, N.C.

ENGLISH DETAIL DRAWING FOR RETROFITTING DETECTABLE WARNING RAMP ONTO EXISTING WHEELCHAIR RAMP CURB CUT

SHEET 2 OF 4 848D05



PROJECT SERVICES UNIT
 STANDARDS AND SPECIAL DESIGN
 Office 919-250-4128 FAX 919-250-4119

SEE PLATE FOR TITLE

ORIGINAL BY: 2002 STD.848.05 DATE:
 MODIFIED BY: E.E. WARD DATE: 06-18-03
 CHECKED BY: DATE:
 FILE SPEC.: /usr/stds/02todetail/eng/lish/84805/848d05.dgn

25-OCT-2004 10:07 AM
 c:\pccat\Drawings\stds\er\d\stds\02\stds to Special Details\english\84805\0848d05.dgn
 erlockard 05212260