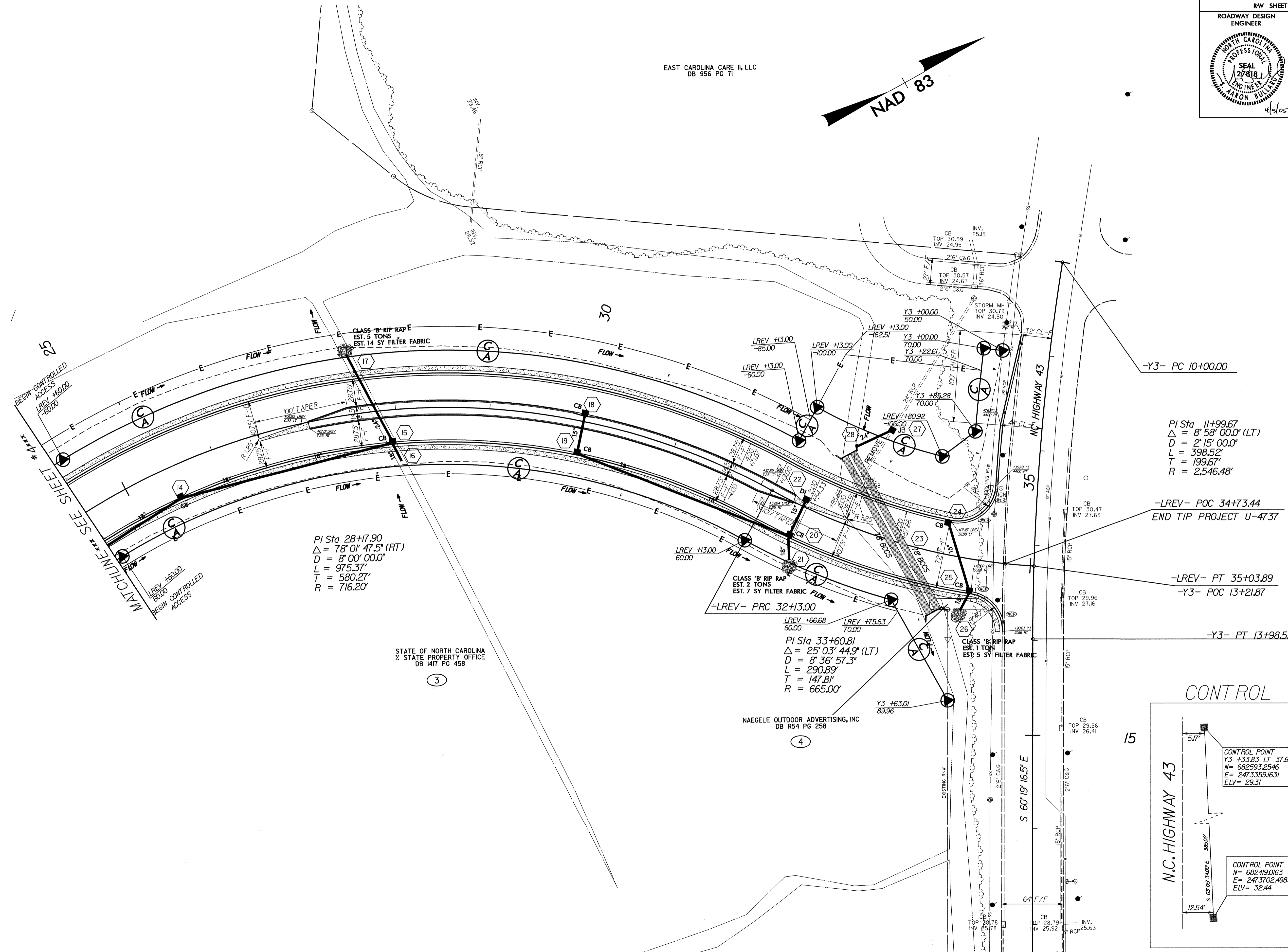
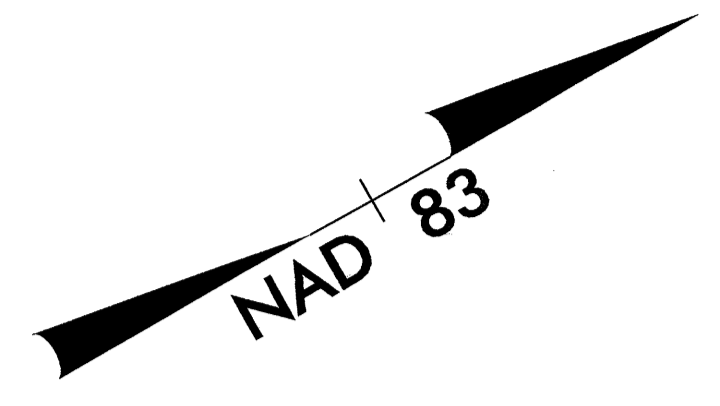


PROJECT REFERENCE NO. U-4737	SHEET NO. 5
RW SHEET NO.	
ROADWAY DESIGN ENGINEER	HYDRAULICS ENGINEER

EAST CAROLINA CARE II, LLC
DB 956 PG 71



REVISIONS
 BEGIN CONTROLLED ACCESS LREV +60.00
 MATCHLINE SEE SHEET #

PI Sta 28+7.90
 $\Delta = 78^{\circ} 01' 47.5" (RT)$
 $D = 8' 00' 00.0"$
 $L = 975.37'$
 $T = 580.27'$
 $R = 716.20'$

STATE OF NORTH CAROLINA
 1/2 STATE PROPERTY OFFICE
 DB 1417 PG 458

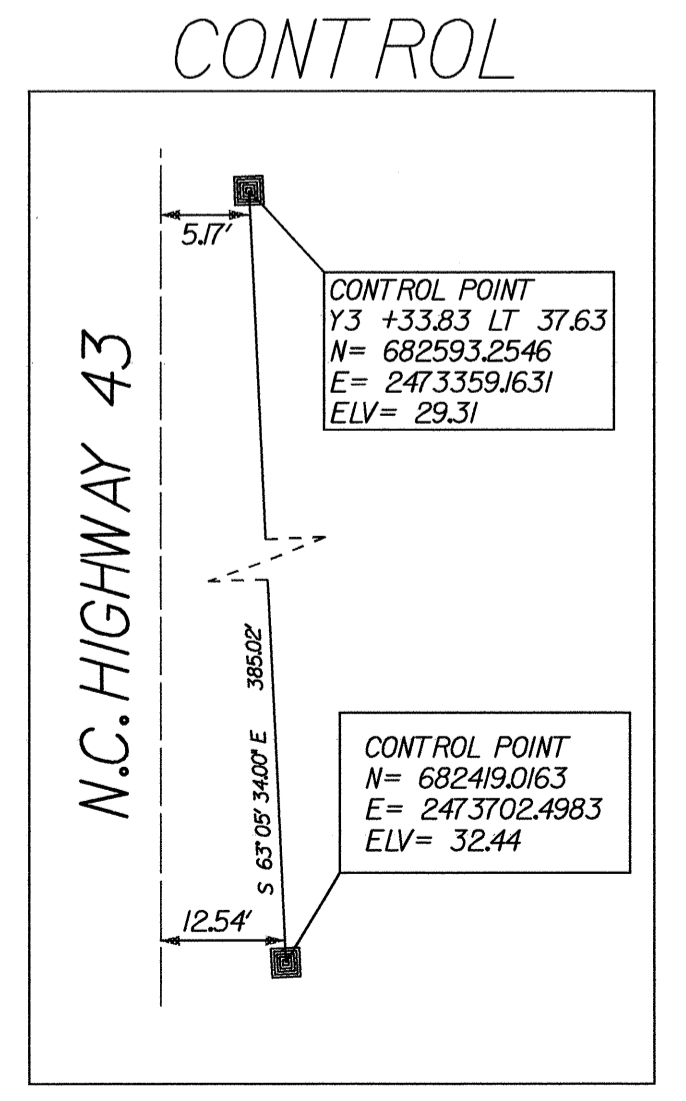
PI Sta 33+60.81
 $\Delta = 25^{\circ} 03' 44.9" (LT)$
 $D = 8' 36' 57.3"$
 $L = 290.89'$
 $T = 147.81'$
 $R = 665.00'$

PI Sta 11+99.67
 $\Delta = 8^{\circ} 58' 00.0" (LT)$
 $D = 2' 15' 00.0"$
 $L = 398.52'$
 $T = 199.67'$
 $R = 2,546.48'$

-LREV- POC 34+73.44
 END TIP PROJECT U-4737

-LREV- PT 35+03.89
 -Y3- POC 13+21.87

-Y3- PT 13+98.52



REVISIONS

06-APR-2005 14:06
 g:\projects\pitt\varlington blvd\varlington with left turn\varlington.ddc2-ps15.dgn
 8/17/99