

REVISIONS
 1. ADDED "UTILITY CONSTRUCTION DRAWINGS" 3-10-05

OSCAR A. KRECHEL, Jr.
 DB 170, PG 47

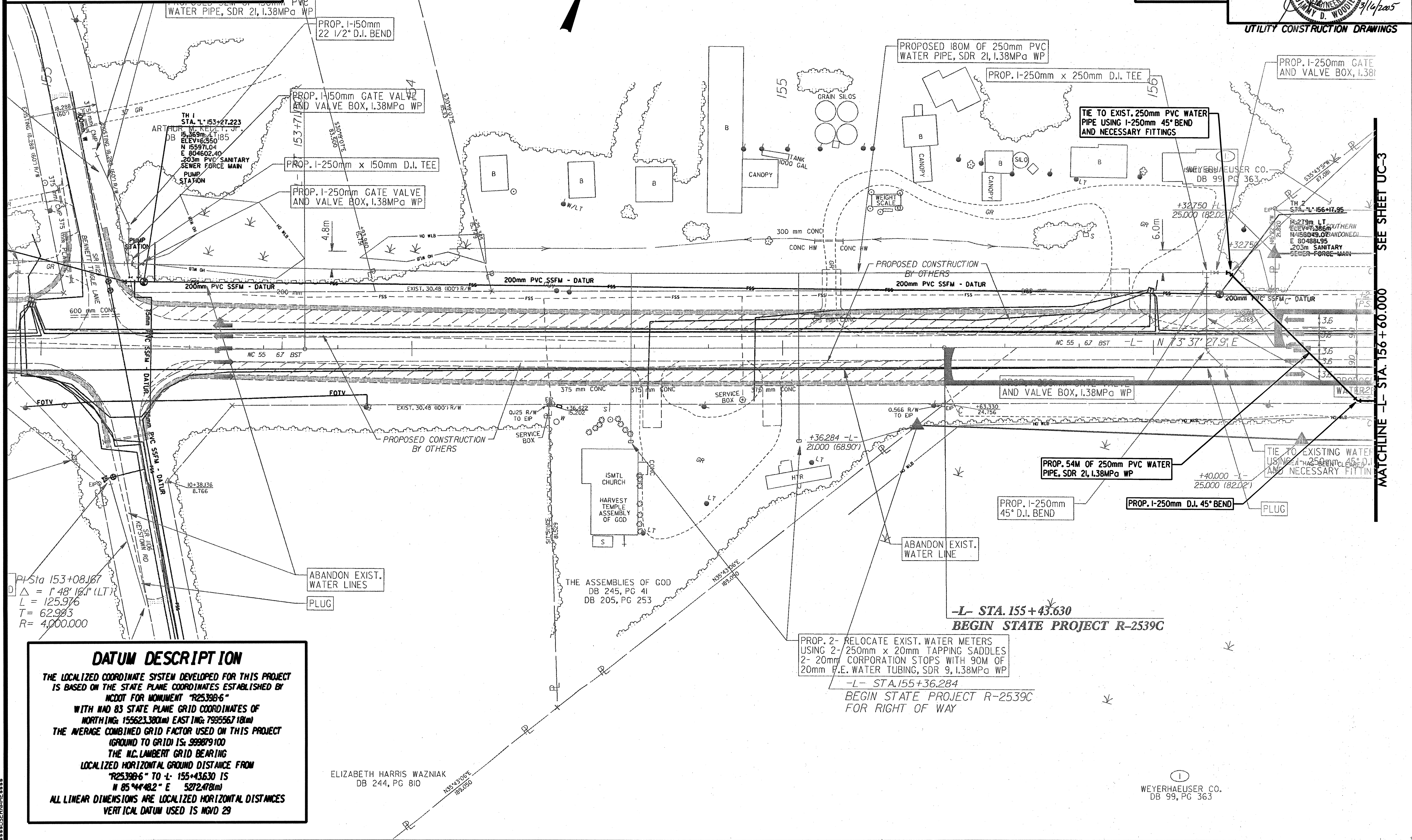
OSCAR A. KRECHEL, Jr.
 DB 170, PG 47

PROJECT REFERENCE NO. R-2539C SHEET NO. UC-2
 R/W SHEET NO.

Municipal Engineering Services Company, P.A.
 P.O. BOX 97 CARRIER, N.C. 27521 P.O. BOX 340 BOONE, N.C. 28607
 P.O. BOX 218 WOODVILLE, N.C. 28387

Professional Engineer
 JIMMY D. WOODIE
 4/16/2005

UTILITY CONSTRUCTION DRAWINGS



PI Sta 153+08.167
 $\Delta = 1' 48" 16.1" (LT)$
 $L = 125.976$
 $T = 62.983$
 $R = 4,000.000$

DATUM DESCRIPTION
 THE LOCALIZED COORDINATE SYSTEM DEVELOPED FOR THIS PROJECT IS BASED ON THE STATE PLANE COORDINATES ESTABLISHED BY NCDOT FOR MONUMENT "R2539B-6" WITH NAD 83 STATE PLANE GRID COORDINATES OF NORTHING: 155623.380(m) EASTING: 799556.718(m) THE AVERAGE COMBINED GRID FACTOR USED ON THIS PROJECT (GROUND TO GRID) IS: 999879100 THE N.C. LAMBERT GRID BEARING LOCALIZED HORIZONTAL GRID DISTANCE FROM "R2539B-6" TO -L- 155+43.630 IS N 85°44'48.2" E 5272.478(m) ALL LINEAR DIMENSIONS ARE LOCALIZED HORIZONTAL DISTANCES VERTICAL DATUM USED IS MVD 29

ELIZABETH HARRIS WAZNAK
 DB 244, PG 810

PROP. 2- RELOCATE EXIST. WATER METERS USING 2- 250mm x 20mm TAPPING SADDLES 2- 20mm CORPORATION STOPS WITH 90M OF 20mm P.E. WATER TUBING, SDR 9, 1.38MPa WP
 -L- STA. 155+36.284
 BEGIN STATE PROJECT R-2539C FOR RIGHT OF WAY

-L- STA. 155+43.630
 BEGIN STATE PROJECT R-2539C

WEYERHAEUSER CO.
 DB 99, PG 363

MATCHLINE -L- STA. 156+60.000 SEE SHEET UC-3