

REVISIONS

1. REVISED PER BRMSD COMMENTS 2/1/05.
2. REVISED PER BRMSD COMMENTS 2/28/05.

METRIC

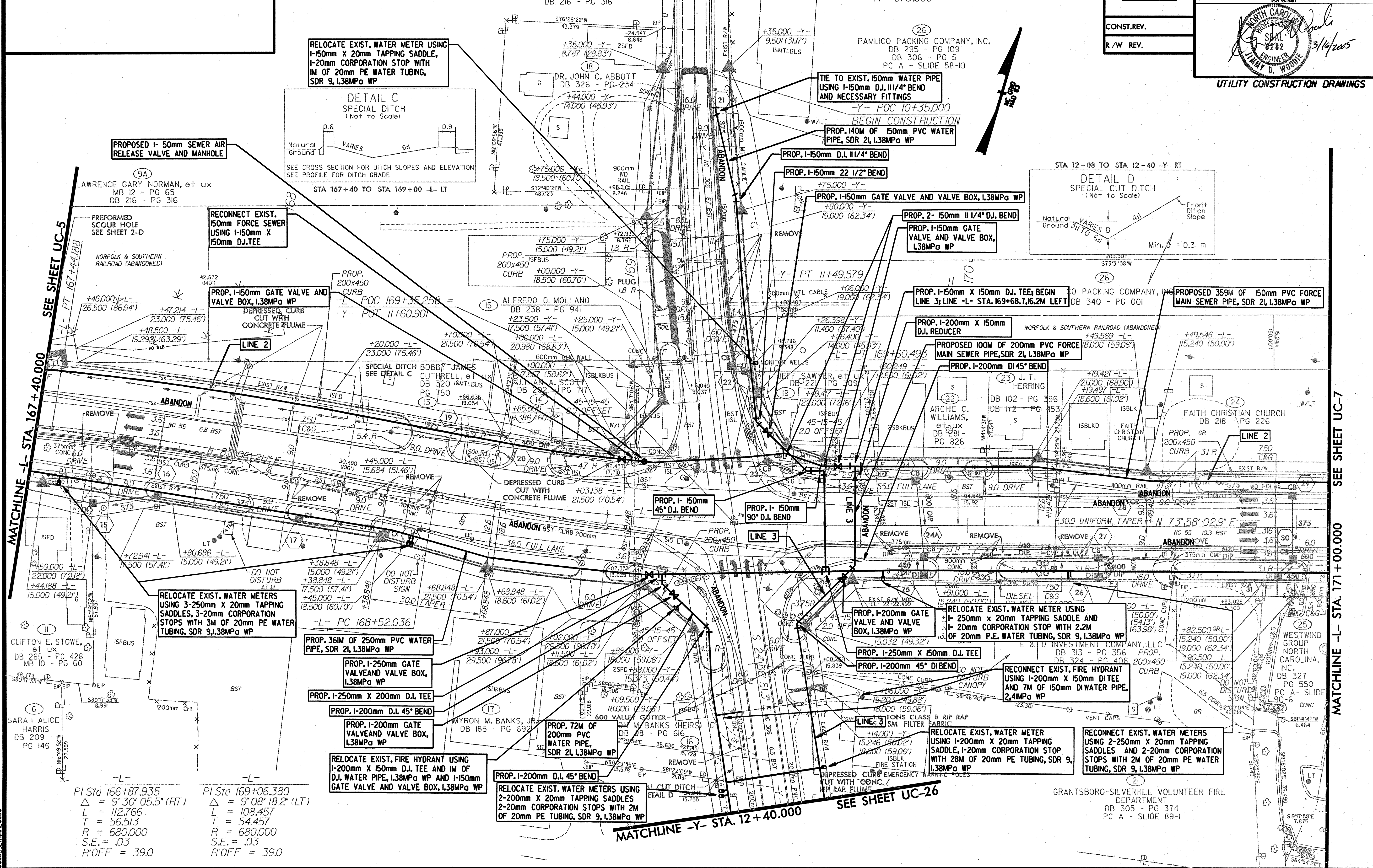
PROJECT REFERENCE NO. **R-2539C** SHEET NO. **UC-6**

R/W SHEET NO.

Municipal Engineering Services Company, P.A.

3/16/2005

UTILITY CONSTRUCTION DRAWINGS



PI Sta 166+87.935
 $\Delta = 9' 30'' 05.5'' (RT)$
 $L = 112.766$
 $T = 56.513$
 $R = 680.000$
 $S.E. = .03$
 $R'OFF = 39.0$

PI Sta 169+06.380
 $\Delta = 9' 08'' 18.2'' (LT)$
 $L = 108.457$
 $T = 54.457$
 $R = 680.000$
 $S.E. = .03$
 $R'OFF = 39.0$

RELOCATE EXIST. WATER METERS USING 2-200mm X 20mm TAPPING SADDLES, 1-20mm CORPORATION STOPS WITH 2M OF 20mm PE TUBING, SDR 9, L38MPa WP

RELOCATE EXIST. WATER METERS USING 3-250mm X 20mm TAPPING SADDLES, 3-20mm CORPORATION STOPS WITH 3M OF 20mm PE WATER TUBING, SDR 9, L38MPa WP

RELOCATE EXIST. WATER METER USING 1-250mm X 20mm TAPPING SADDLE AND 1-20mm CORPORATION STOP WITH 2.2M OF 20mm P.E. WATER TUBING, SDR 9, L38MPa WP

RELOCATE EXIST. WATER METERS USING 2-250mm X 20mm TAPPING SADDLES AND 2-20mm CORPORATION STOPS WITH 2M OF 20mm PE WATER TUBING, SDR 9, L38MPa WP

RELOCATE EXIST. WATER METER USING 1-150mm X 20mm TAPPING SADDLE, 1-20mm CORPORATION STOP WITH 1M OF 20mm PE WATER TUBING, SDR 9, L38MPa WP

RECONNECT EXIST. WATER METER USING 1-150mm X 150mm D.I. TEE; BEGIN LINE 3; LINE -L- STA. 169+68.7, 16.2M LEFT

RECONNECT EXIST. FIRE HYDRANT USING 1-200mm X 150mm D.I. TEE AND 7M OF 150mm DI WATER PIPE, 2,4MPa WP

RELOCATE EXIST. WATER METER USING 1-200mm X 20mm TAPPING SADDLE, 1-20mm CORPORATION STOP WITH 2M OF 20mm PE WATER TUBING, SDR 9, L38MPa WP

RECONNECT EXIST. WATER METERS USING 2-250mm X 20mm TAPPING SADDLES AND 2-20mm CORPORATION STOPS WITH 2M OF 20mm PE WATER TUBING, SDR 9, L38MPa WP

MATCHLINE -L- STA. 167 + 40.000

MATCHLINE -Y- STA. 12 + 40.000

SEE SHEET UC-5

SEE SHEET UC-26

SEE SHEET UC-7