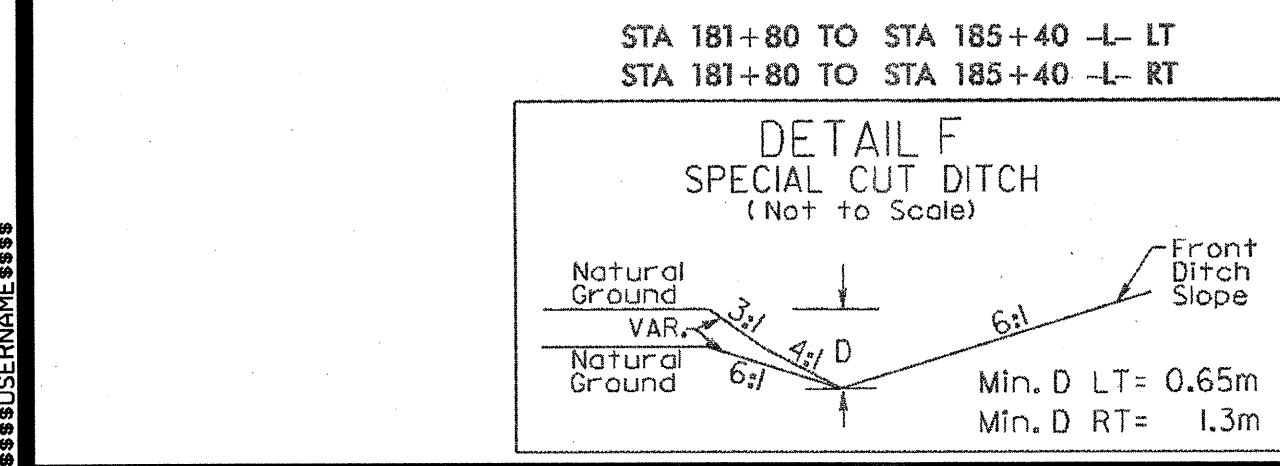
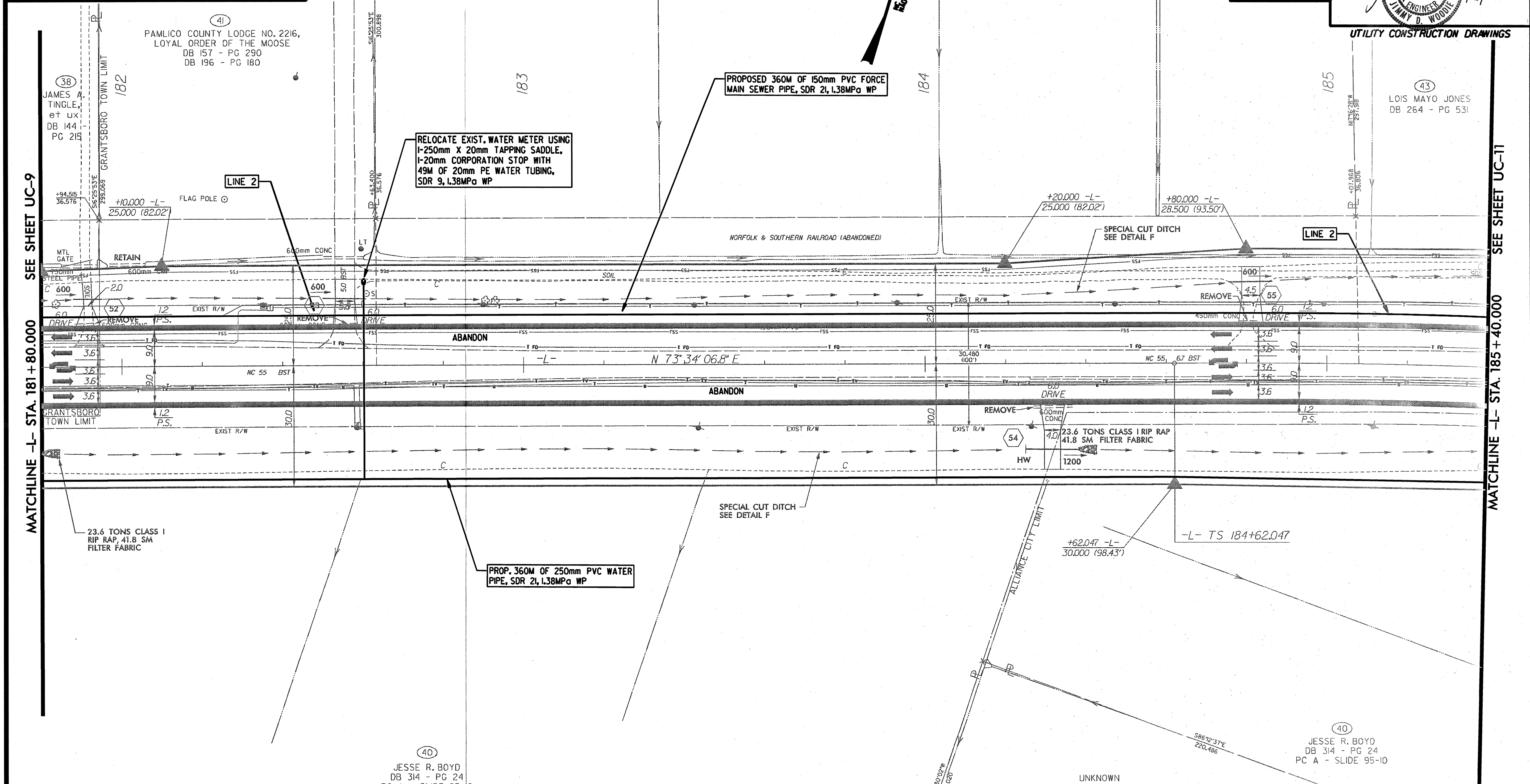


REVISIONS
 I. REVISED PER BRMSD COMMENTS 2/28/05

METRIC
 PROJECT REFERENCE NO. **R-2539C** SHEET NO. **UC-10**
 R/W SHEET NO.
 Municipal Services Engineering Company, P.A.
 P.O. BOX 97 DANIEL, N.C. 27525 P.A. BOX 349 SIOGUE, N.C. 28667
 P.O. BOX 1173-332 P.O. BOX 276 NORFOLK CITY, N.C. 28507
 252-725-2941
 CONST. REV.
 R/W REV.
 NORTH CAROLINA PROFESSIONAL ENGINEER
 SEAL 6282
 JIMMY D. WOODIE
 3/16/2005
 UTILITY CONSTRUCTION DRAWINGS



-L-

Pls Sta 185+41.421	PI Sta 186+58.383	Pls Sta 187+74.574
$\Theta_s = 5^\circ 40' 54.6''$ (RT)	$\Delta = 14^\circ 41' 20.7''$ (RT)	$\Theta_s = 5^\circ 40' 54.6''$ (RT)
Ls = 119.000	L = 153.824	Ls = 119.000
LT = 79.374	T = 77.336	LT = 79.374
ST = 39.704	R = 600.000	ST = 39.704
	S.E. = .07	

SEE SHEET UC-11
 MATCHLINE -L- STA. 185 + 40.000